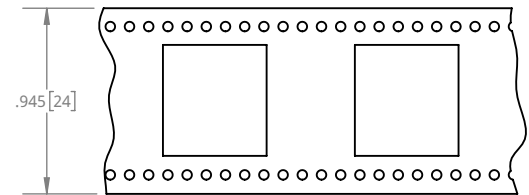
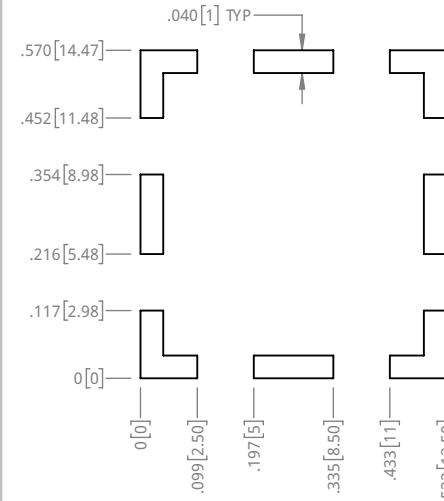
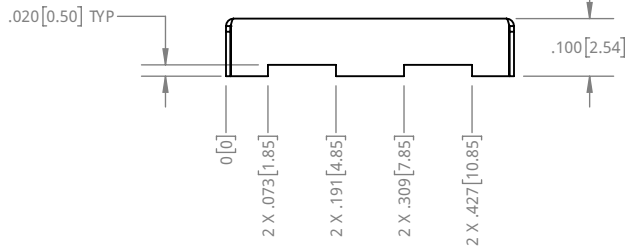
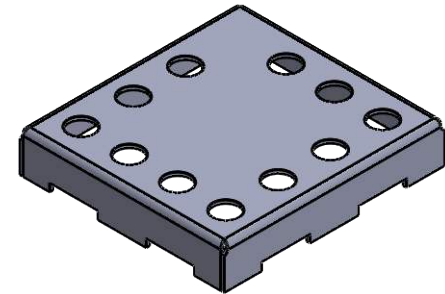
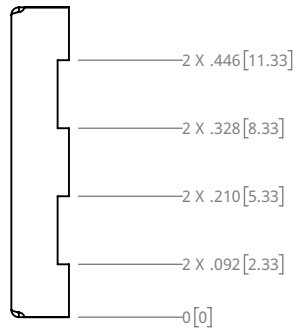
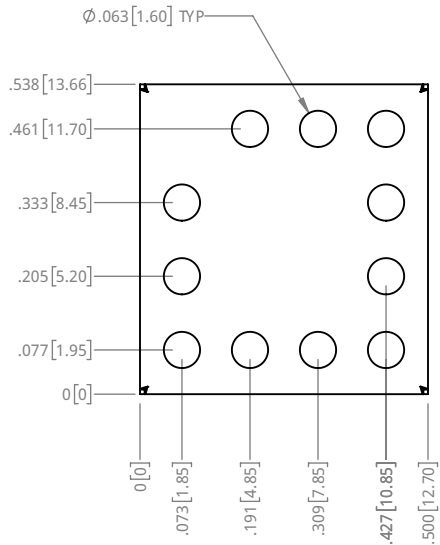


NOTES:

1. MATERIAL: 0.008" TIN PLATED STEEL PER ASTM A623/A624
2. PARTS PER REEL: 1200



CARRIER TAPE

PCB FOOTPRINT

PROPRIETARY NOTICE: THESE DRAWINGS, LISTS OR SPECIFICATIONS ARE THE CONFIDENTIAL INFORMATION AND/OR TRADE SECRET OF 3G SHIELDING SPECIALTIES, P.C. AND SHALL REMAIN THE PROPERTY OF 3G SHIELDING SPECIALTIES, P.C. IN ALL RIGHTS. NO PART OF THESE DRAWINGS, LISTS OR SPECIFICATIONS SHALL NOT BE REPRODUCED, TRANSMITTED, USED FOR THE PHYSICAL MANUFACTURE OR SALE OF EQUIPMENT OR LISTED FOR ANY OTHER PURPOSE OTHER THAN EVALUATION.

UNLESS OTHERWISE SPECIFIED  
U/M TOLERANCE ±0.005  
INCHES

ROHS COMPLIANCE  
2011/65/EU

DATE 15-12-10



PART NUMBER <b>PIC-S-101</b>	REV. <b>0</b>
DESCRIPTION <b>SHIELD CAN</b>	
SCALE <b>3:1</b>	SHEET <b>1 OF 1</b>