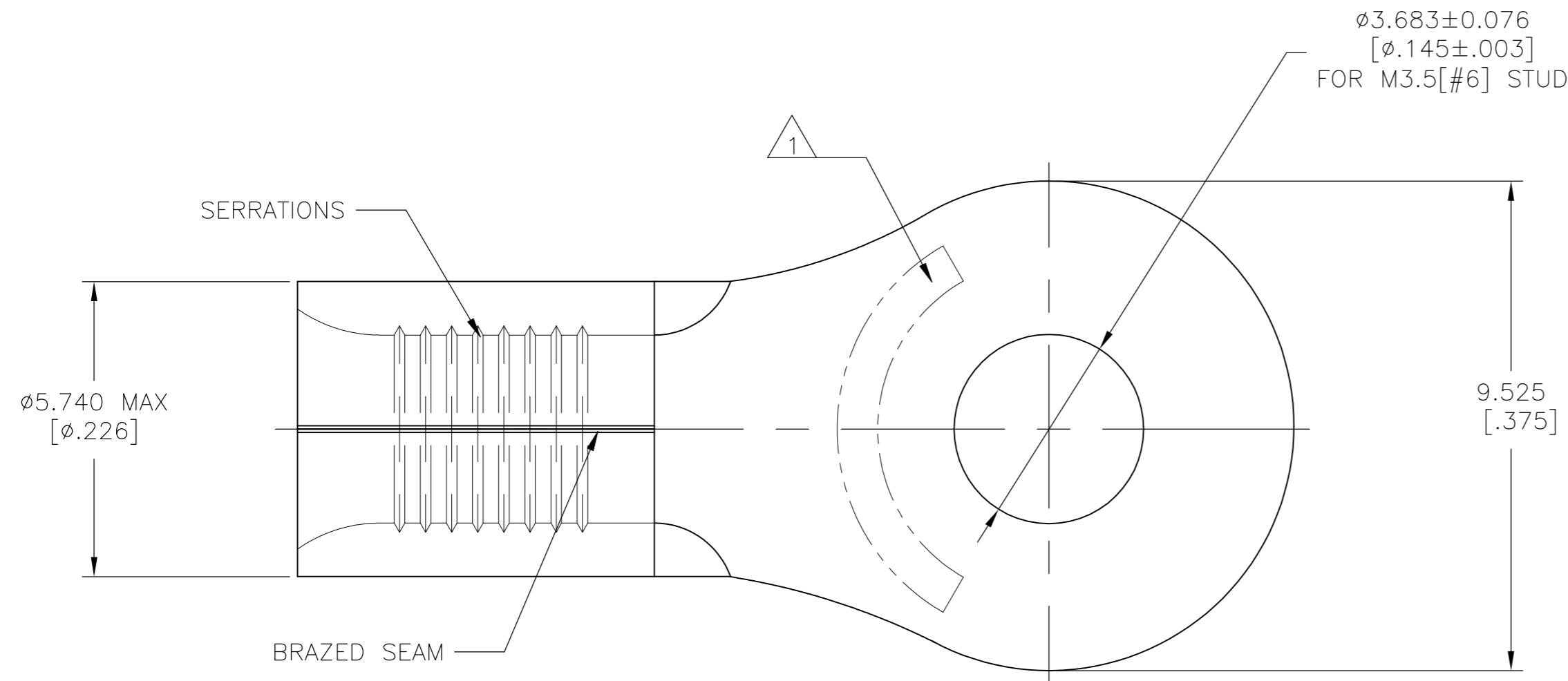


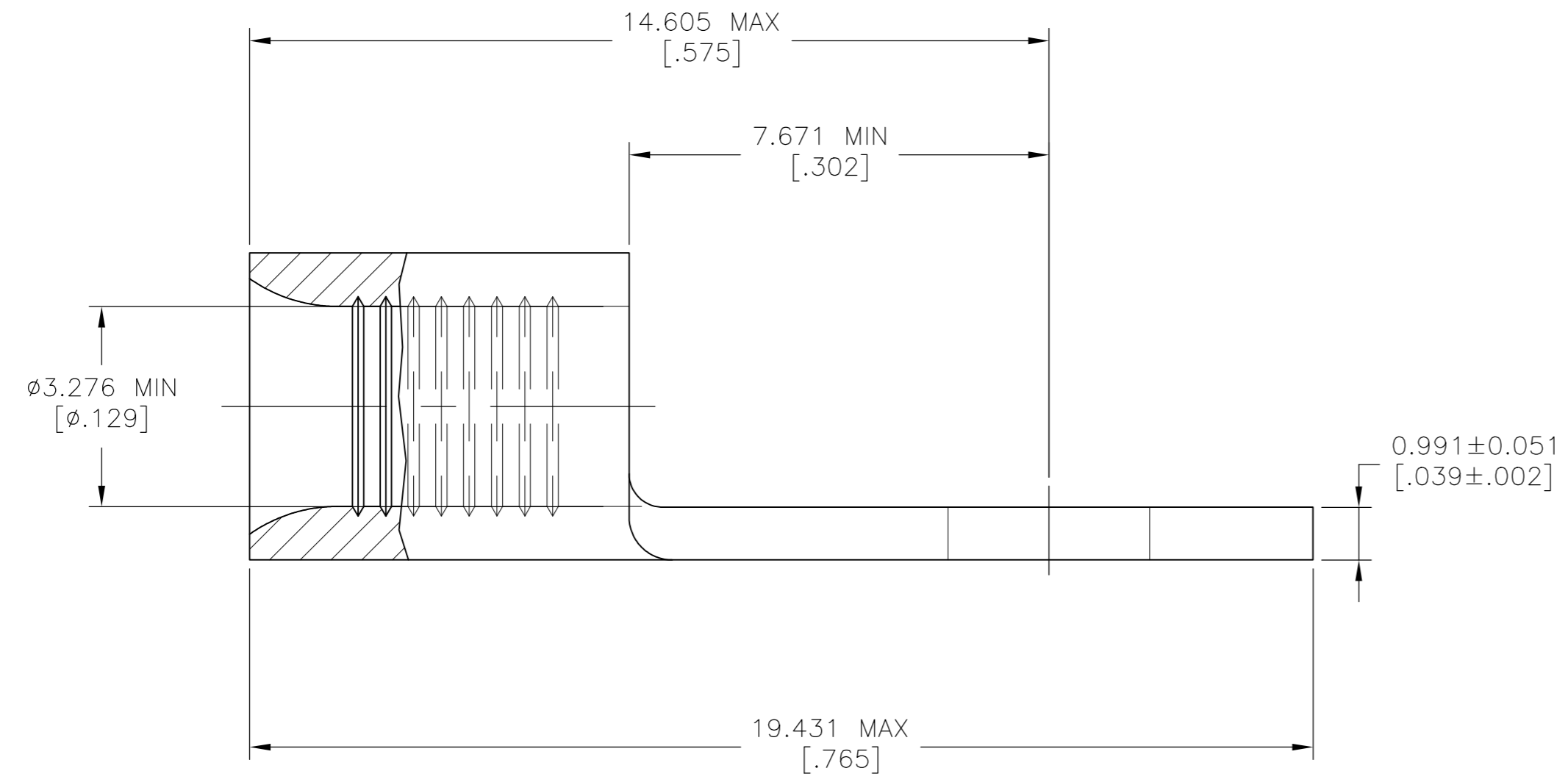
THIS DRAWING IS UNPUBLISHED. RELEASED FOR PUBLICATION
 © COPYRIGHT - TE Connectivity Ltd. ALL RIGHTS RESERVED.

| REVISIONS | | | | | |
|-----------|-----|---------------------------|-----------|-----|------|
| P | LTR | DESCRIPTION | DATE | DWN | APVD |
| D1 | | REV PER ECR 06-027811 | 30NOV06 | JR | TM |
| D2 | | REVISED PER ECO-17-008806 | 15FEB2018 | RS | DR |



| | | |
|--------------------------------|---------------------------------|--------------------------------|
| AMP WIRE RANGE | UL Listed FILE E13288 | LR7189 Certified |
| 12-10 AWG SOLID OR STRANDED | 12-10 AWG STRANDED | 12-10 AWG SOLID OR STRANDED |

- 1 STAMP AMP 12-10* APPROX AS SHOWN
- 2 TIN PLATE 0.00254 [.000100] MIN THK PER ASTM B-545
- 3 NOTE DELETED
- 4 NOTE DELETED
- 5 TIN/LEAD (93.7) PLATE PER ASTM-B545 (3% MIN LEAD CONTENT).
- 6 COPPER PER ASTM B-152, ANNEALED
- 7 NOTE DELETED



| | | | |
|------|--------|----------------|-----------|
| 2500 | 2 | ON TAPE | 2-33456-1 |
| 500 | 5 | LOOSE PIECE | 33456-1 |
| 500 | 2 | LOOSE PIECE | 33456 |
| QTY | FINISH | PACKAGING TYPE | PART NO. |

| | | |
|--|--|---|
| AMP INCORPORATED CUSTOMER SERVICE SYSTEMS | | MAX RECOMMENDED OPERATING TEMPERATURE: 170°C[338°F] |
| FOR ADDITIONAL PRODUCT INFORMATION OR COPIES OF DRAWINGS AND TECHNICAL DOCUMENTS | PRODUCT INFORMATION CENTER 1-800-522-6752 | VOLTAGE RATING: N/A |
| FOR APPLICATION TOOLING INFORMATION | TOOLING ASSISTANCE CENTER 1-800-722-1111 | CIRCULAR MIL AREA: 2.62-6.64mm ² [5,180-13,100] SOLID OR STRANDED |
| FOR ORDER ENTRY | 1-800-526-5142 | THIS DRAWING IS A CONTROLLED DOCUMENT FOR AMP INCORPORATED. IT IS SUBJECT TO CHANGE AND THE CONTROLLING ENGINEERING ORGANIZATION SHOULD BE CONTACTED FOR THE LATEST REVISION. |

THIS DRAWING IS A CONTROLLED DOCUMENT.

| | |
|----------------------------|--|
| DIMENSIONS: mm [INCHES] | TOLERANCES UNLESS OTHERWISE SPECIFIED: |
| 0 PLC ± - | 1 PLC ± - |
| 2 PLC ± - | 3 PLC ± 0.127[.005] |
| 4 PLC ± - | ANGLES ± - |

MATERIAL: - 6

FINISH: SEE NOTES

| | | | | |
|--------------------------------|---|--------------------|------------------------|--------------------|
| DWN TA BRINKMAN 3-17-93 | TE TE Connectivity Ltd. | | | |
| CHK DA PATTERSON 3-17-93 | | | | |
| APVD JL MECKLEY 3-17-93 | NAME TERMINAL, RING TONGUE, SOLISTRAND 12-10 AWG | | | |
| PRODUCT SPEC UL 486 A-B | SIZE A2 | CAGE CODE 00779 | DRAWING NO. C-33456 | RESTRICTED TO - |
| APPLICATION SPEC | SCALE 10:1 | | SHEET 1 of 1 | REV D2 |