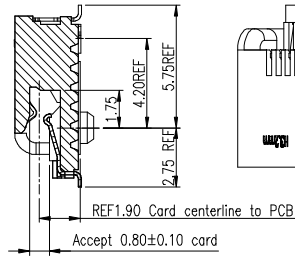
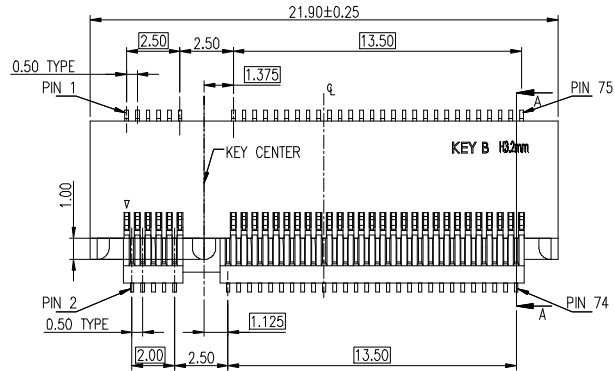


**PART NUMBER**  
**10125101-AXXRLF**

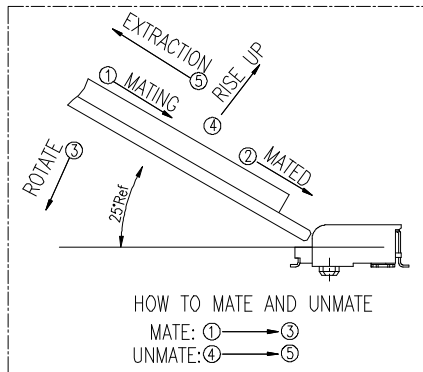
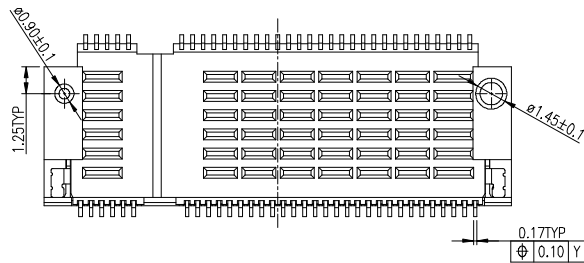
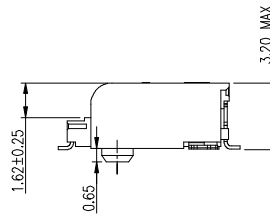
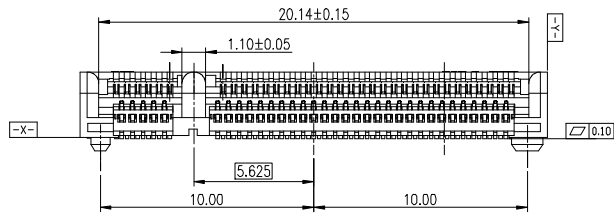
NOTES:

- 1.MATERIAL:
  - 1) HOUSING: HIGH TEMPERATURE THERMOPLASTIC, COLOR BLACK.
  - 2) CONTACT: COPPER ALLOY.
  - 3) NAIL: COPPER ALLOY.
- 2.FINISH:
  - 2.1 CONTACTS:
    - 1) 50u" MIN. Ni UNDER PLATED ALL
    - 2) Au PLATING ON CONTACT AREA.
    - 3) MATTE Tin 80u" MIN. ON SOLDER AREA.
  - 2.2 NAILS:
    - 1) 50u" MIN. Ni UNDER PLATED OVER ALL.
    - 2) MATTE Tin 80u" MIN. ON SOLDER AREA.
3. GENERAL CHARACTERISTICS:
  - 3.1 RATING: 50V 0.5A
  - 3.2 INSULATION RESISTANCE: 100Mohm MIN. AT 500VDC
  - 3.3 DIELECTRIC WITHSTANDING VOLTAGE: 300VAC FOR ONE MINUTE.
  - 3.4 CONTACT RESISTANCE: 55 mohm MAX. (BEFORE).
  - 3.5 MATING/UNMATING FORCE: 2.3Kgf MAX.
4. DURABILITY 50 CYCLES.
5. PRODUCT SPECIFICATION SEE FCI GS-12-1142.
6. FOR REFLOW SOLDERING, LEAD-FREE PROCESS.
7. THE PRODUCT IS RoHS COMPLIANT AND HALOGEN FREE.
8. P/N: 10125101- A XX R L F

R=TAPE REEL PACKING  
 CONTACT AREA PLATING  
 01:GoldFlash (Au1u")  
 15: Au15u"  
 30: Au30u"  
 HEIGHT  
 A=3.2

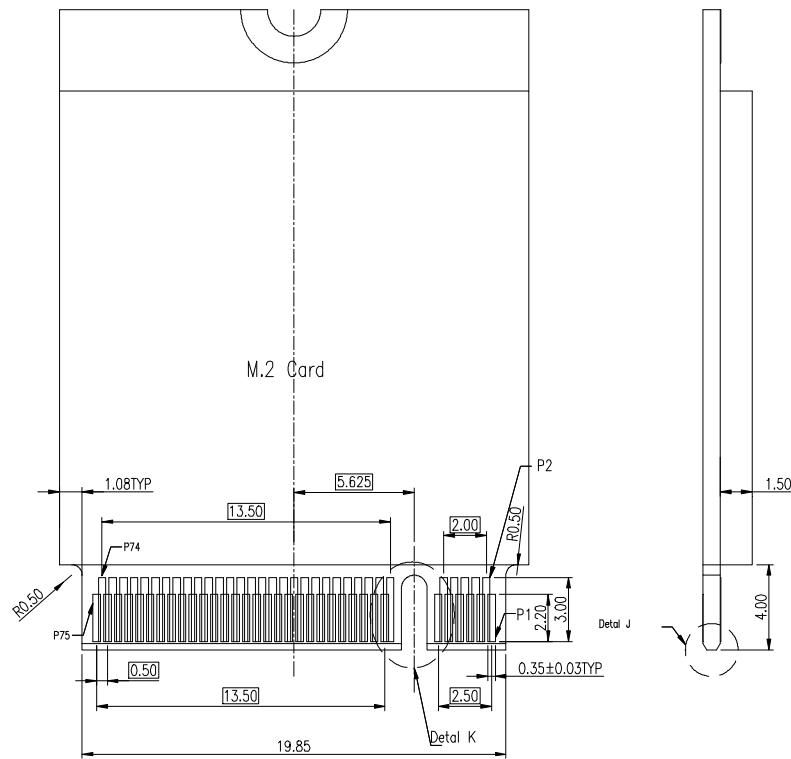


SECTION A-A  
SCALE: 1:1

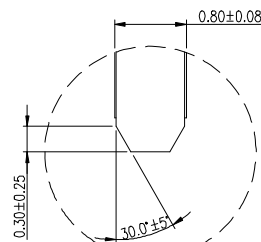


mat'l. code		surface		tolerance	projection	product family	
ltr	ecn no	dr	date	tolerances unless otherwise specified		title	
A		BF	2013-05-02	angles	.X ±0.3	M.2 CONN P=0.5MM	
B		BF	2014-01-03	lin	.XX ±0.25	H3.2MM KEY B	
C	ELX-T-19318	TAI	2014-11-06	X°±2°	.XXX ±0.05	scale	
				dr	BEER FU	2013-05-02	sheet 1 of 3
				enr	BEER FU	2013-05-02	size
				chr	BEER FU	2013-05-02	A4
				appd	BEER FU	2013-05-02	type
sheet	revision	C	C	C			CUSTOMER Drawing
index	sheet	1	2	3			

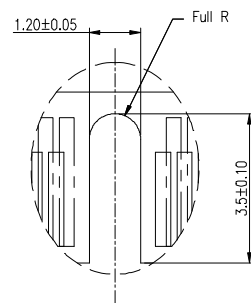
**PART NUMBER**  
**10125101-AXXRLF**



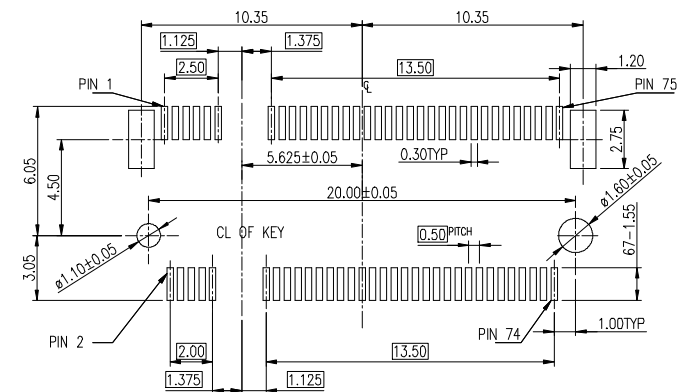
RECOMMENDED SINGLE CARD LAYOUT  
TOLERANCE  $\pm 0.05$ (TOP VIEW)



DETAIL K  
SCALE:2:1



DETAIL J  
SCALE:2:1



CARD FIXED HOLE(NOT SHOWN) LAYOUT SHALL REFER TO M.2 CARD PROVIDER

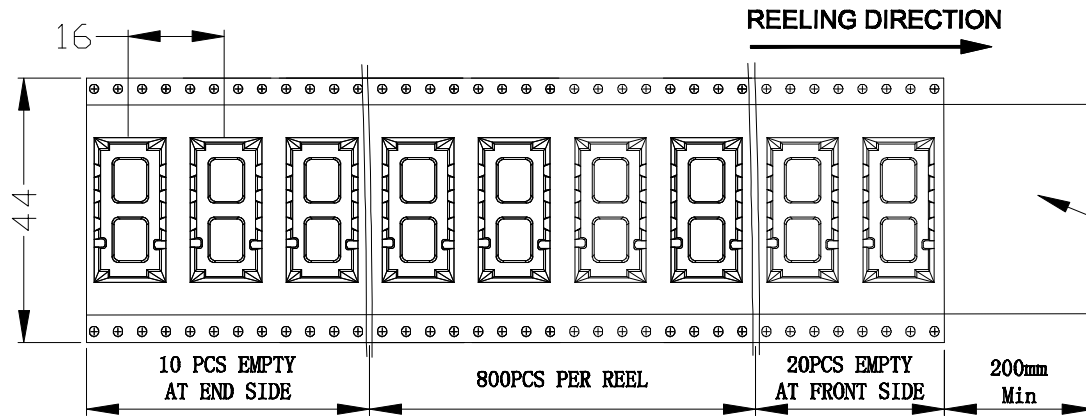
RECOMMENDED SINGLE CARD LAYOUT  
TOLERANCE  $\pm 0.05$ (TOP VIEW)



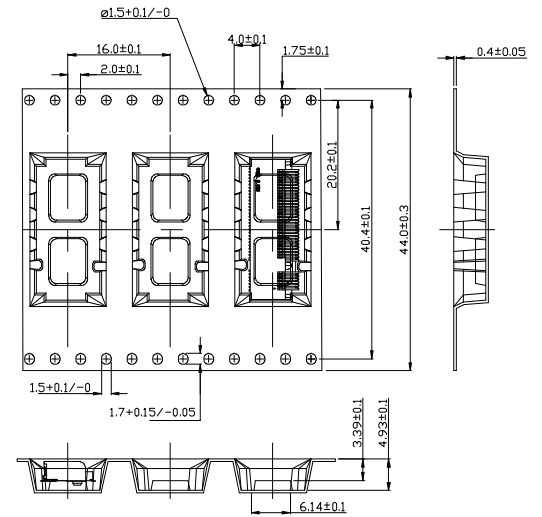
dwg no	sheet 2 of 3	size
10125101		A4
type	CUSTOMER Drawing	

sheet index	revision sheet	C	C	C																
	1	2	3																	

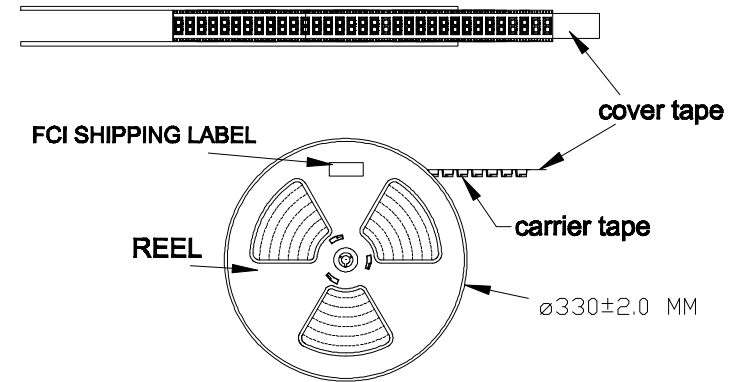
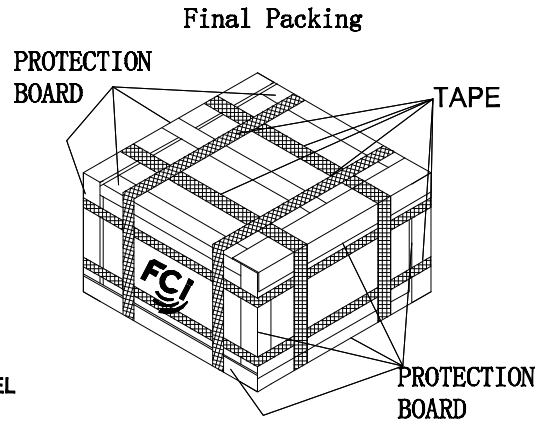
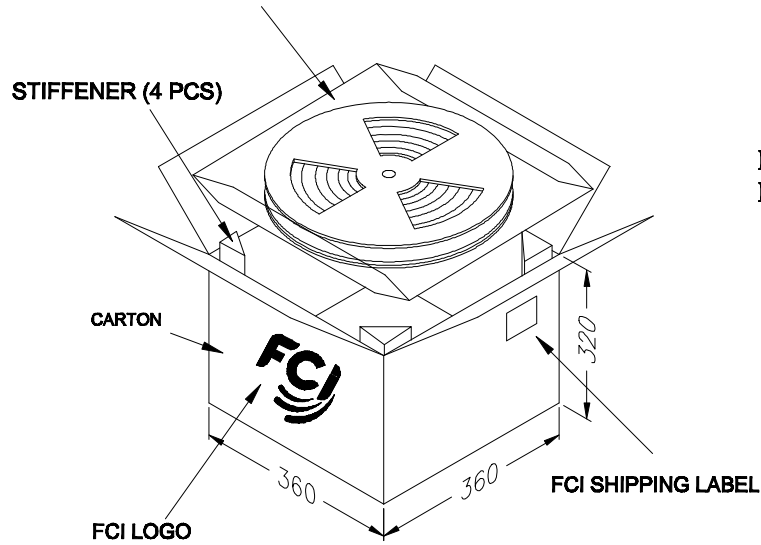
# PACKING SPECIFICATION



cover tape



PLASTIC BAGS (2 PCS), 3 REELS/BAG, TOTAL 6 REELS/CARTON



PART NUMBER	10125101-AXXRLF
PCS/REEL	800
REEL/CARTON	6
PCS/CARTON	4800
NET WEIGHT (KG)	2.5KG
GROSS WEIGHT (KG)	6.5KG



dwg no	sheet 3 of 3	size
10125101		A4
type	CUSTOMER Drawing	

sheet index	revision sheet	C	C	C																
	1	2	3																	