



CY8CKIT-148-COIL

Inductive Sensing Coil Breakout Board Kit Guide

Document Number: 002-26890 Rev. **

Cypress Semiconductor
198 Champion Court
San Jose, CA 95134-1709
www.cypress.com

Copyrights

© Cypress Semiconductor Corporation, 2019. This document is the property of Cypress Semiconductor Corporation and its subsidiaries ("Cypress"). This document, including any software or firmware included or referenced in this document ("Software"), is owned by Cypress under the intellectual property laws and treaties of the United States and other countries worldwide. Cypress reserves all rights under such laws and treaties and does not, except as specifically stated in this paragraph, grant any license under its patents, copyrights, trademarks, or other intellectual property rights. If the Software is not accompanied by a license agreement and you do not otherwise have a written agreement with Cypress governing the use of the Software, then Cypress hereby grants you a personal, non-exclusive, nontransferable license (without the right to sublicense) (1) under its copyright rights in the Software (a) for Software provided in source code form, to modify and reproduce the Software solely for use with Cypress hardware products, only internally within your organization, and (b) to distribute the Software in binary code form externally to end users (either directly or indirectly through resellers and distributors), solely for use on Cypress hardware product units, and (2) under those claims of Cypress's patents that are infringed by the Software (as provided by Cypress, unmodified) to make, use, distribute, and import the Software solely for use with Cypress hardware products. Any other use, reproduction, modification, translation, or compilation of the Software is prohibited.

TO THE EXTENT PERMITTED BY APPLICABLE LAW, CYPRESS MAKES NO WARRANTY OF ANY KIND, EXPRESS OR IMPLIED, WITH REGARD TO THIS DOCUMENT OR ANY SOFTWARE OR ACCOMPANYING HARDWARE, INCLUDING, BUT NOT LIMITED TO, THE IMPLIED WARRANTIES OF MERCHANTABILITY AND FITNESS FOR A PARTICULAR PURPOSE. No computing device can be absolutely secure. Therefore, despite security measures implemented in Cypress hardware or software products, Cypress shall have no liability arising out of any security breach, such as unauthorized access to or use of a Cypress product. CYPRESS DOES NOT REPRESENT, WARRANT, OR GUARANTEE THAT CYPRESS PRODUCTS, OR SYSTEMS CREATED USING CYPRESS PRODUCTS, WILL BE FREE FROM CORRUPTION, ATTACK, VIRUSES, INTERFERENCE, HACKING, DATA LOSS OR THEFT, OR OTHER SECURITY INTRUSION (collectively, "Security Breach"). Cypress disclaims any liability relating to any Security Breach, and you shall and hereby do release Cypress from any claim, damage, or other liability arising from any Security Breach. In addition, the products described in these materials may contain design defects or errors known as errata which may cause the product to deviate from published specifications. To the extent permitted by applicable law, Cypress reserves the right to make changes to this document without further notice. Cypress does not assume any liability arising out of the application or use of any product or circuit described in this document. Any information provided in this document, including any sample design information or programming code, is provided only for reference purposes. It is the responsibility of the user of this document to properly design, program, and test the functionality and safety of any application made of this information and any resulting product. "High-Risk Device" means any device or system whose failure could cause personal injury, death, or property damage. Examples of High-Risk Devices are weapons, nuclear installations, surgical implants, and other medical devices. "Critical Component" means any component of a High-Risk Device whose failure to perform can be reasonably expected to cause, directly or indirectly, the failure of the High-Risk Device, or to affect its safety or effectiveness. Cypress is not liable, in whole or in part, and you shall and hereby do release Cypress from any claim, damage, or other liability arising from any use of a Cypress product as a Critical Component in a High-Risk Device. You shall indemnify and hold Cypress, its directors, officers, employees, agents, affiliates, distributors, and assigns harmless from and against all claims, costs, damages, and expenses, arising out of any claim, including claims for product liability, personal injury or death, or property damage arising from any use of a Cypress product as a Critical Component in a High-Risk Device. Cypress products are not intended or authorized for use as a Critical Component in any High-Risk Device except to the limited extent that (i) Cypress's published data sheet for the product explicitly states Cypress has qualified the product for use in a specific High-Risk Device, or (ii) Cypress has given you advance written authorization to use the product as a Critical Component in the specific High-Risk Device and you have signed a separate indemnification agreement.

Cypress, the Cypress logo, Spansion, the Spansion logo, and combinations thereof, WICED, PSoC, CapSense, EZ-USB, F-RAM, and Traveo are trademarks or registered trademarks of Cypress in the United States and other countries. For a more complete list of Cypress trademarks, visit cypress.com. Other names and brands may be claimed as property of their respective owners.

Contents



Safety Information	4
1. Introduction	5
1.1 Kit Contents	5
1.2 Getting started with the Kit.....	6
1.3 PSoC Creator	10
1.3.1 Installing PSoC 4700S Device in PSoC Creator	11
1.3.2 Installing the MagSense Component	12
1.3.3 PSoC Creator Code Examples	13
1.3.4 Kit Code Examples.....	14
1.3.5 PSoC Creator Help	14
1.3.6 Component Datasheets	14
1.4 Additional Learning Resources	15
1.5 Technical Support	15
1.6 Document Conventions	16
1.7 Acronyms	17
2. Kit Operation	18
2.1 Theory of Operation	18
2.1.1 Principle of Inductive Sensing	18
2.1.2 CY8CKIT-148-COIL System.....	19
2.2 Functional Description	20
2.2.1 Metal Targets.....	20
2.2.2 Multi-purpose Sensors (CR1-CR5, SQ7, SQ8).....	21
2.2.3 Six-Segment Slider (SQ1-SQ6)	21
2.2.4 Linear Encoder (LE1, LE2).....	22
2.2.5 Rotary Encoder (RE1, RE2).....	22
2.3 Sensor Parameters and Recommended Settings	23
2.4 Code Example	23
Appendix	24
A.1 Board Details	24
A.2 Header/Connector Details	24
A.2.1 Header Connections	25
A.2.2 FPC Connector	27
A.3 CY8CKIT-148-COIL Inductive Sensing Coil Breakout Board Schematics and the Bill of Materials	28
Revision History	29

Safety Information



Regulatory Compliance

The CY8CKIT-148-COIL Inductive Sensing Coil Breakout Board is intended for use as an evaluation platform for hardware or software in a laboratory environment. The board is an open system design, which does not include a shielded enclosure. This may cause interference to other electrical or electronic devices in close proximity. In a domestic environment, this product may cause radio interference. In such cases, you may be required to take adequate preventive measures. In addition, this board should not be used near any medical equipment or RF devices.

Attaching additional wiring to this product or modifying the product operation from the factory default settings may affect its performance and cause interference with other apparatus in the immediate vicinity. If such interference is detected, suitable mitigating measures should be taken.



The CY8CKIT-148-COIL Inductive Sensing Coil Breakout Board, as shipped from the factory, has been verified to meet with requirements of CE as a Class A product.



End-of-Life/Product Recycling

This kit has an end-of life five years from the date of manufacture mentioned on the back of the box. Contact your nearest recycler for discarding the kit.

1. Introduction



The CY8CKIT-148-COIL Inductive Sensing Coil Breakout Board is designed as an easy-to-use and inexpensive evaluation platform. The Kit along with the CY8CKIT-148 PSoC® 4700S Inductive Sensing Evaluation Kit (EVK) delivers a low cost and complete system solution for embedded applications of Inductive sensing.

While the CY8CKIT-148 EVK can be used stand-alone, this kit offers additional sensor patterns for evaluating Inductive Sensing Technology with PSoC 4700S device.

Download the kit guide of the CY8CKIT-148 PSoC® 4700S Inductive Sensing Evaluation Kit from the [webpage](#) for more details on the base board that is used in conjunction with this kit.

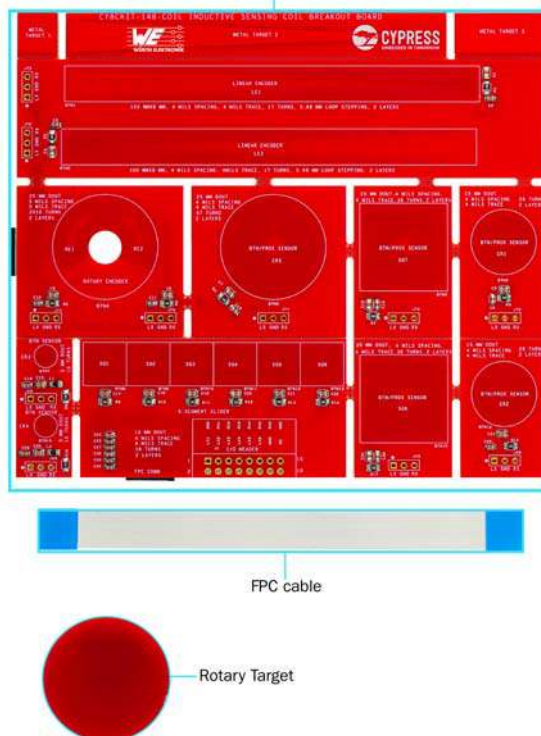
1.1 Kit Contents

CY8CKIT-148-COIL kit includes the following:

- Inductive Sensing Breakout Board
- Metal Target (Rotary Target)
- FPC cable

The Quick Start Guide is printed on the kit package.

Figure 1-1. CY8CKIT-148-COIL Kit Contents

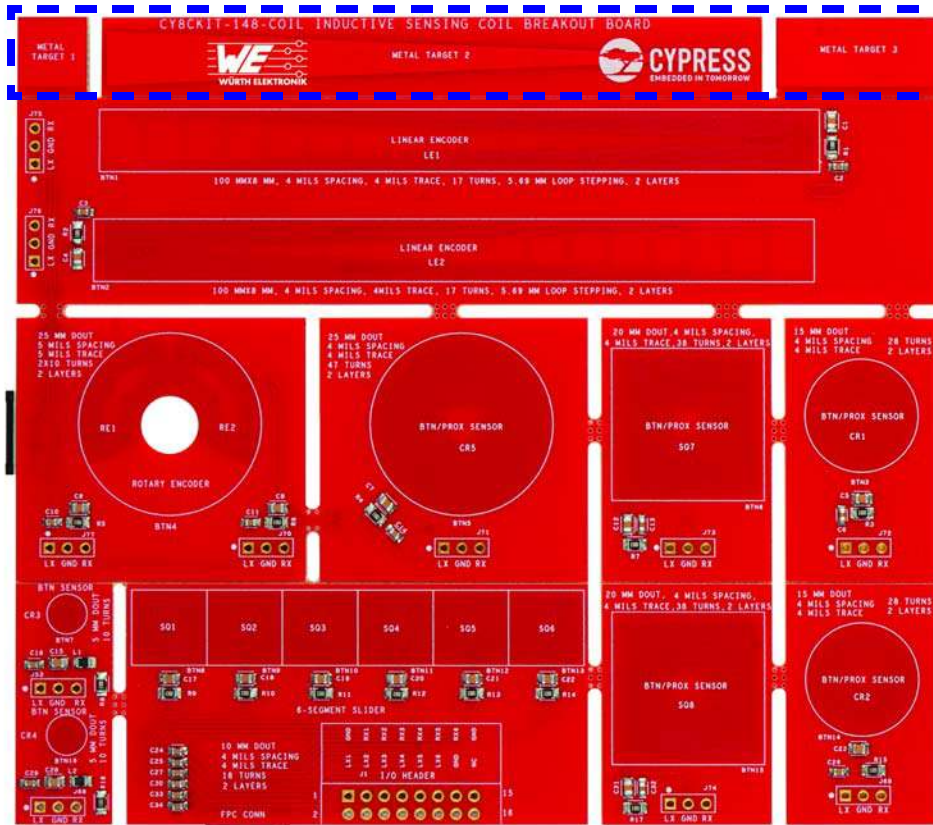


1.2 Getting started with the Kit

To start with the CY8CKIT-148-COIL Inductive Sensing Coil Breakout Board, follow the steps below:

- Check the kit contents as described in [Kit Contents](#) on page 5.
- Download the hardware files from the kit [webpage](#).
- The breakout board has three metal targets as shown in [Figure 1-2](#).

Figure 1-2. Three metal targets on the CY8CKIT-148-COIL board



- Break METAL TARGET 1 and METAL TARGET 3 as shown in Figure 1-3.

Figure 1-3. METAL TARGET 1 and METAL TARGET 3 on the CY8CKIT-148-COIL board

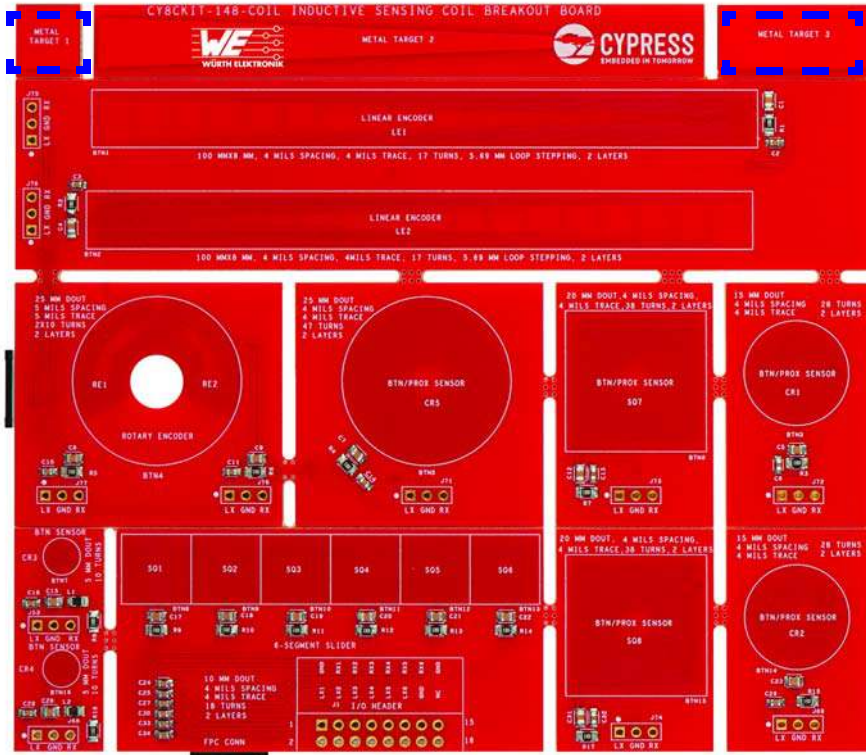
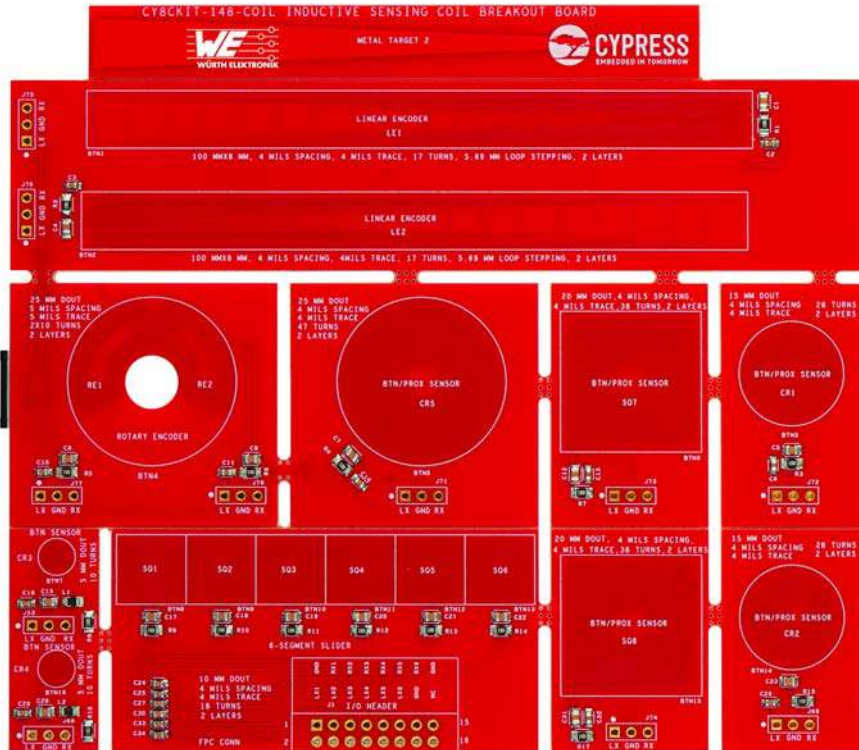


Figure 1-4. CY8CKIT-148-COIL board after removal of METAL TARGET 1 and METAL TARGET 3



- Place the breakout board flat on the edge of a stable surface with METAL TARGET 2 hanging over the edge. Holding the breakout board firmly, apply downward pressure to METAL TARGET 2 to break the target away. This is an optional step. User can leave METAL TARGET 2 attached if they are not going to use it for one of the sliders.

Figure 1-5. Procedure to break the METAL TARGET 2

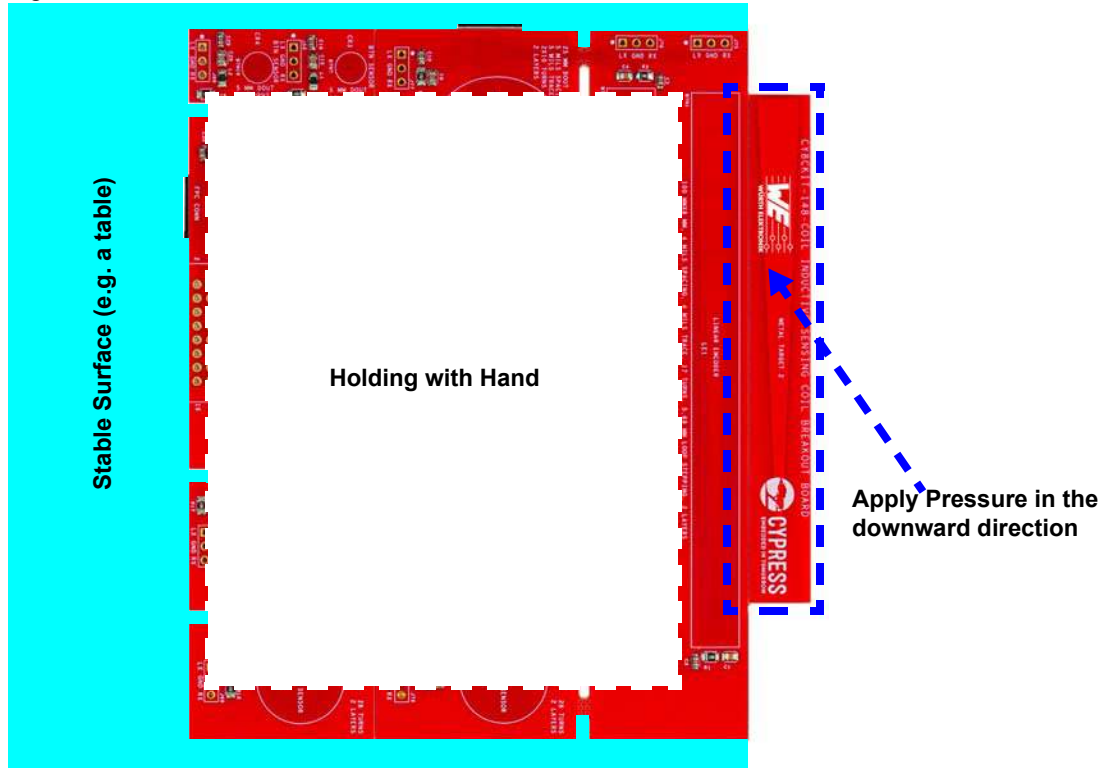
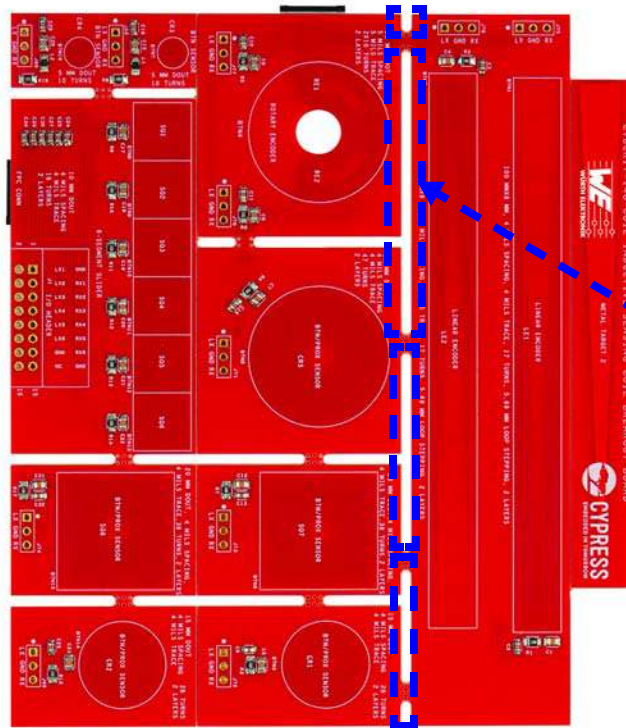


Figure 1-6. Breakout regions that may get affected because of improper breaking procedure



Improper Breaking procedure of the metal target will cause this area to break. The LINEAR ENCODER sensors will get disconnected from the FPC connector

METAL TARGET 2 can be difficult to break away from the breakout board. Carefully follow the procedure described above.

- The following on-board sensors are not connected to any of the FPC connectors.
 - BTN/PROX SENSOR (SQ7, SQ8)
 - BTN/PROX SENSOR (CR1, CR2)
 - BTN SENSOR (CR3, CR4)

If you want to evaluate any of these sensors, you need to connect wires between the corresponding I/O header on the breakout board and the coil expansion connector (J4) on the CY8CKIT-148 kit. In addition to that you need to change some components on the CY8CKIT-148 board. See [Table A-2 on page 26](#) for connection details.

- There are two on-board FPC connectors. The remaining sensors below are connected to the FPC connectors and the headers both.
 - LINEAR ENCODER (LE1, LE2)
 - ROTARY ENCODER (RE1, RE2)
 - 6-SEGMENT SLIDER (SQ1 to SQ6)

These sensors are default connected to the FPC connector. If there is any requirement of connecting the sensors through the headers, you need to refer the same [Table A-2 on page 26](#).

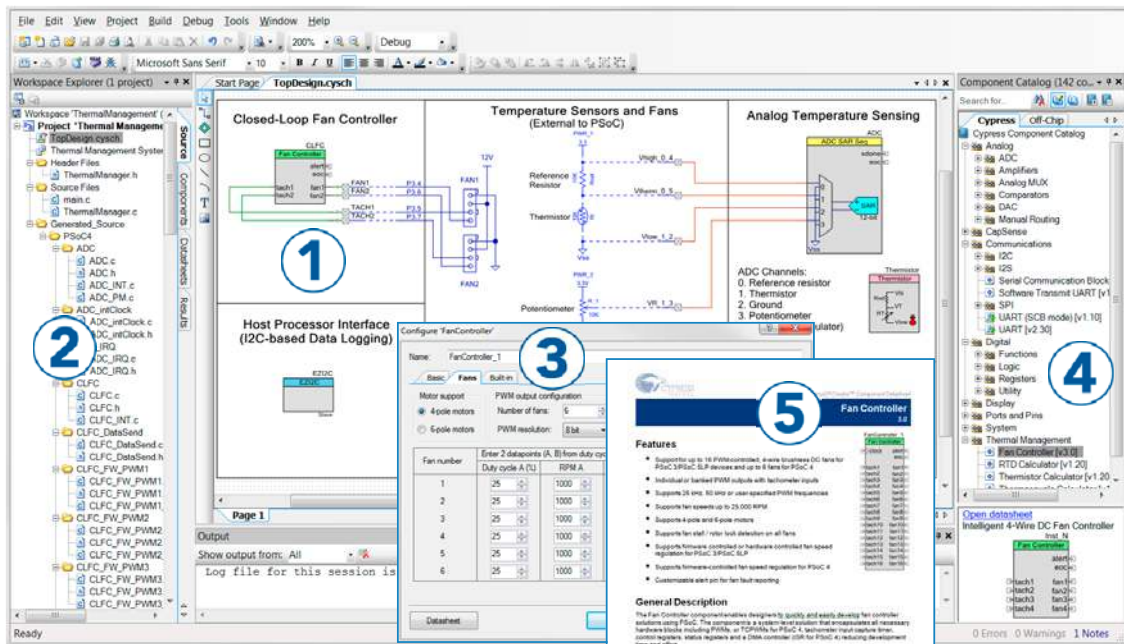
- See the [Kit Operation chapter on page 18](#) that describes the principle of inductive sense technology. This chapter describes all the inductive sensor patterns present on this board.
- See the [Appendix chapter on page 24](#) to get header and connector details of the board, Kit Schematics, and the bill of materials (BOM).

1.3 PSoC Creator

PSoC Creator™ is a state-of-the-art, easy-to-use integrated design environment (IDE). It introduces revolutionary hardware and software co-design, powered by a library of pre-verified and pre-characterized PSoC Components. With PSoC Creator, you can:

1. Drag and drop Components to build your hardware system design in the main design workspace.
2. Co-design your application firmware with the PSoC hardware.
3. Configure Components using configuration tools.
4. Explore the library of 100+ Components.
5. Review Component datasheets.

Figure 1-7. PSoC Creator Features



PSoC Creator also enables you to tap into an entire tool ecosystem with integrated compiler chains and programmers for PSoC devices.

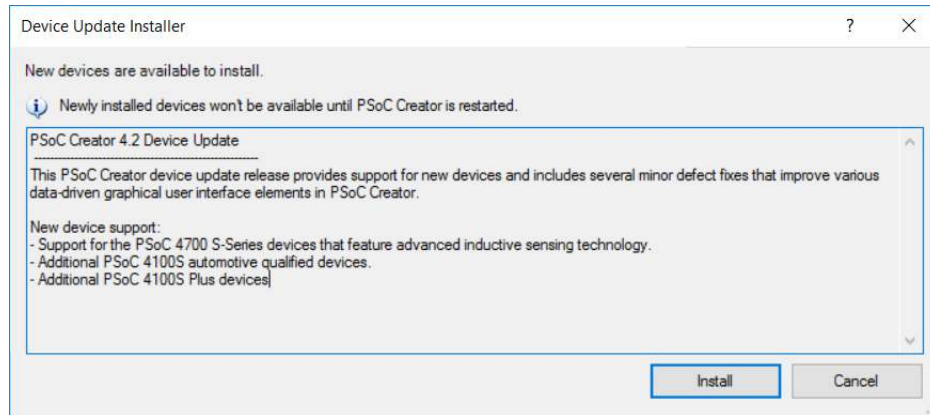
For more information, visit www.cypress.com/psoccreator. Visit the [PSoC Creator Video Training Page](#) for video tutorials on learning and using PSoC Creator.

1.3.1 Installing PSoC 4700S Device in PSoC Creator

The steps below need to be followed in order to install PSoC 4700S device into PSoC Creator before opening the code example workspace for the first time. These steps only need to be done once.

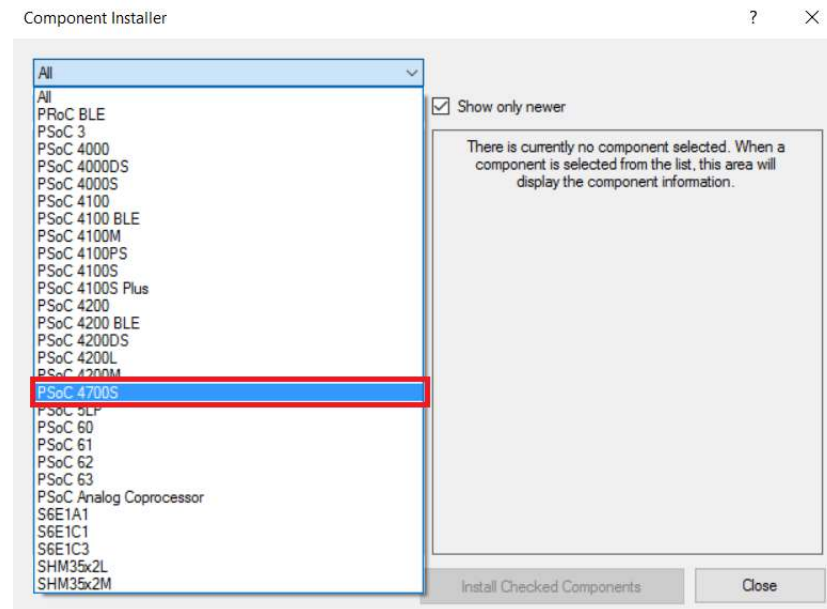
1. Run PSoC Creator 4.2.
2. Go to **Tools > Find new devices** in PSoC Creator. The Device Update Installer window will pop-up.

Figure 1-8. Device Update Installer



3. Click on the **Install** Button.
4. **Restart PSoC Creator.** Note that this is an important step. The devices will only be available after PSoC Creator is restarted.
 The devices should now be available in the device selector when you create a new project.
 From the dropdown list, select **PSoC 4700S**.

Figure 1-9. Device Selection

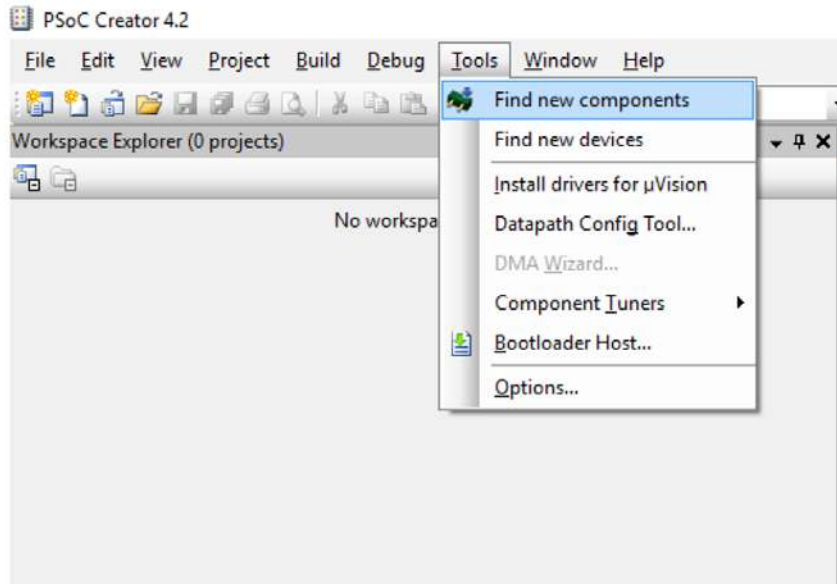


1.3.2 Installing the MagSense Component

The steps below need to be followed to install the latest version of the MagSense component before opening the code example workspace for the first time. These steps only need to be done once.

1. To install the MagSense Component, Click **Tools > Find new components**. [Figure 1-10](#) shows this step.

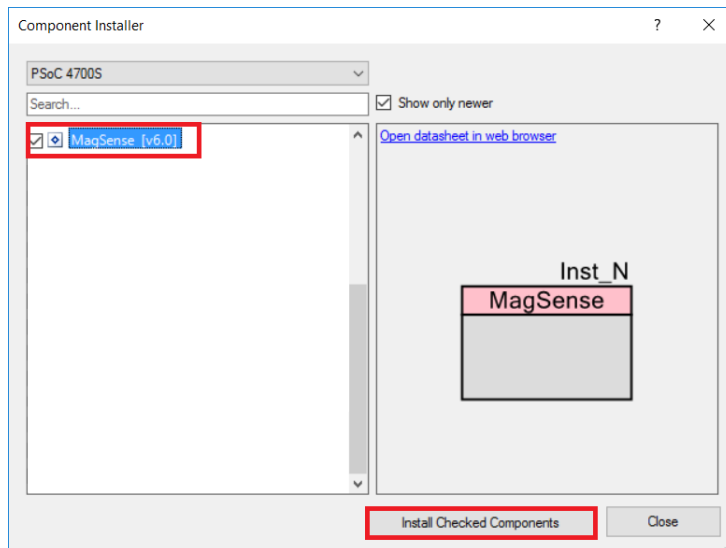
Figure 1-10. Tools Tab for finding New Components



2. Select the MagSense Component and click **Install Checked Components**. This will install the MagSense Component in your software.

Note: You can skip this step if the MagSense Component is pre-installed in PSoC Creator.

Figure 1-11. Component Installation



1.3.3 PSoC Creator Code Examples

PSoC Creator includes a large number of code examples. These examples are available from the PSoC Creator Start Page, as shown in [Figure 1-12](#) or from the menu **File > Code Example...**

Code examples can speed up your design process by starting you off with a complete design, instead of a blank page. The code examples also show how PSoC Creator Components can be used for various applications. Code examples and documentation are included, as shown in [Figure 1-13 on page 13](#).

From the **Find Code Example** dialog shown in [Figure 1-13 on page 13](#), you can:

- Filter for examples based on architecture or device family, that is, PSoC 3, PSoC 4, or PSoC 5LP, project name, or keyword.
- Select from the list of examples offered based on the **Filter Options**.
- Review the code example's description (on the **Documentation** tab).
- Review the code from the **Sample Code** tab. You can copy the code from this window and paste to your project, which can help speed up code development.
- Create a new project (and a new workspace if needed) based on the selection. This can speed up your design process by starting you off with a complete, basic design. You can then adapt that design to your application.

Figure 1-12. Code Examples in PSoC Creator

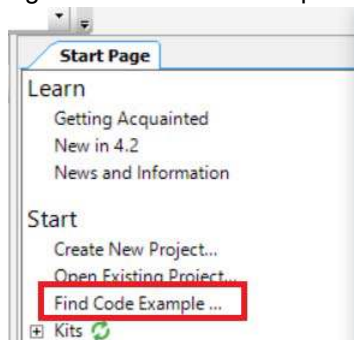
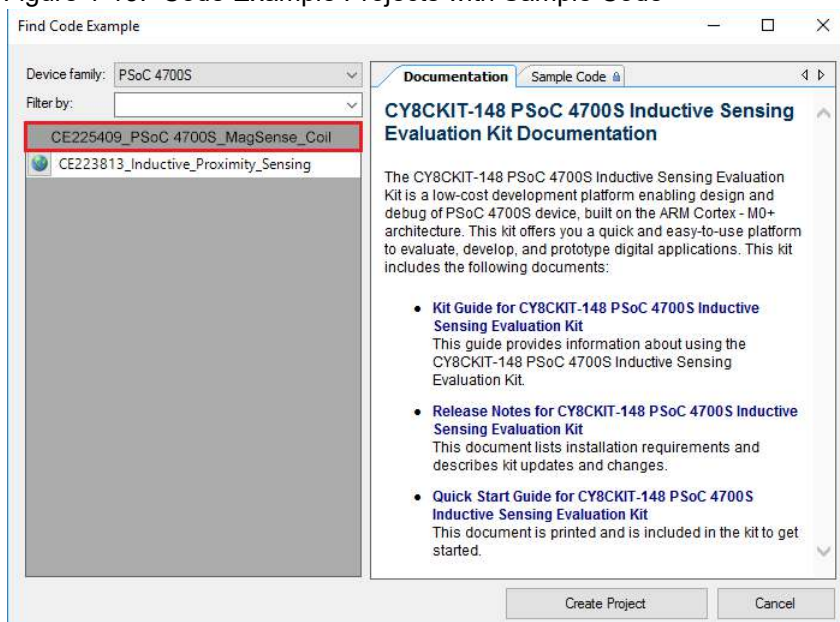


Figure 1-13. Code Example Projects with Sample Code



1.3.4 Kit Code Examples

You can access the installed kit code examples from the PSoC Creator Start Page. To access these examples, expand **Kits** under **Start**; then, expand CY8CKIT-148 to see the code examples. You can download CE225409-PSoC 4700S MagSense COIL for example projects that can be used with the CY8CKIT-148 and CY8CKIT-148-COIL to implement custom applications.

1.3.5 PSoC Creator Help

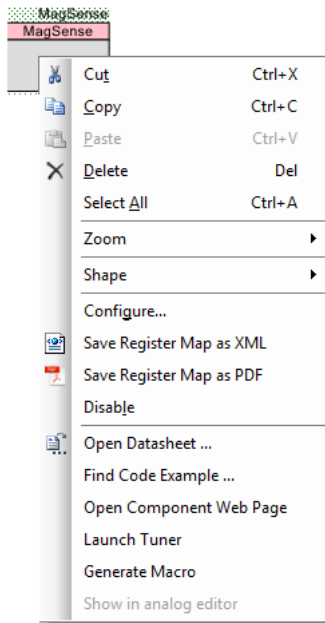
Launch PSoC Creator and navigate to the following items:

- **Quick Start Guide:** Choose **Help > Documentation > Quick Start Guide**. This guide gives you the basics for developing PSoC Creator projects.
- **Simple Component Code Examples:** Choose **File > Code Example**. These examples demonstrate how to configure and use PSoC Creator Components. To access examples related to a specific Component, right-click the Component in the schematic or in the Component Catalog. Select **Find Code Example** in the context menu that appears.
- **System Reference Guide:** Choose **Help > System Reference Guides**. This guide lists and describes the system functions provided by PSoC Creator.

1.3.6 Component Datasheets

Right-click a Component and select **Open Datasheet** (see [Figure 1-14](#)).

Figure 1-14. Opening Component Datasheet



1.4 Additional Learning Resources

Cypress provides a wealth of data at www.cypress.com to help you select the right PSoC device for your design, and to help you quickly and effectively integrate the device into your design. For a comprehensive list of resources, see [KBA86521](#), [How to Design with PSoC 3](#), [PSoC 4](#), and [PSoC 5LP](#). The following is an abbreviated list for PSoC 4:

- Overview: [PSoC Portfolio](#) and [PSoC Roadmap](#).
- Product Selectors: [PSoC 4 Product Selector](#). In addition, [PSoC Creator](#) includes a device selection tool.
- Datasheets: Describe and provide electrical specifications for the [PSoC 4000](#), [PSoC 4100](#), [PSoC 4200](#), [PSoC 4100M](#), [PSoC 4200M](#), [PSoC 4200L](#), [PSoC 4100S Plus](#) and [PSoC 4700S](#) devices.
- [CapSense Design Guide](#): Learn how to design capacitive touch-sensing applications with the PSoC 4 and PSoC Analog Coprocessor family of devices.
- [Inductive Sensing Design Guide](#): Learn how to design inductive sensing applications with the PSoC 4 family of devices.
- [Application Notes](#) and [Code Examples](#): Cover a broad range of topics, from basic to advanced. Many of the application notes include code examples. Visit the [PSoC 3/4/5 Code Examples](#) webpage for a list of all available PSoC Creator code examples. To access code examples from within PSoC Creator, see [PSoC Creator Code Examples on page 13](#).
- [Technical Reference Manuals \(TRM\)](#): Provide detailed descriptions of the architecture and registers in each PSoC 4 device family.
- [Development Kits](#):
 - [CY8CKIT-041](#), [CY8CKIT-046](#), [CY8CKIT-044](#), [CY8CKIT-042](#), and [CY8CKIT-040](#) are easy-to-use and inexpensive development platforms. These kits include connectors for Arduino™ compatible shields and Digilent Pmod Peripheral Modules.
 - [CY8CKIT-043](#), [CY8CKIT-049](#), [CY8CKIT-145](#), [CY8CKIT-146](#), and [CY8CKIT-149](#) are very low-cost prototyping platforms for sampling PSoC 4 devices.
 - [CY8CKIT-001](#) is a common development platform for all PSoC family devices.
 - The [MiniProg3](#) and [MiniProg4](#) devices provide interface for flash programming and debug.
- [Knowledge Base Articles \(KBAs\)](#): Provide design and application tips from experts on using the device.
- PSoC Creator Training: Visit www.cypress.com/go/creatorstart/creatortraining for a comprehensive list of video training on PSoC Creator.
- Learning from Peers: Visit community.cypress.com/welcome to meet enthusiastic PSoC developers discussing the next-generation embedded systems on Cypress Developer Community Forums.

1.5 Technical Support

For assistance, visit [Cypress Support](#) or contact customer support at +1 (800) 541-4736 Ext. 3 (in the USA) or +1 (408) 943-2600 Ext. 3 (International).

You can also use the following support resources if you need quick assistance:

- [Self-help \(Technical Documents\)](#)
- [Local Sales Office Locations](#)

1.6 Document Conventions

Table 1-1. Document Conventions for Guides

Convention	Usage
Courier New	Displays file locations, user entered text, and source code: C:\...\cd\icc\
<i>Italics</i>	Displays file names and reference documentation: Read about the <i>sourcefile.hex</i> file in the <i>PSoC Creator User Guide</i> .
[Bracketed, Bold]	Displays keyboard commands in procedures: [Enter] or [Ctrl] [C]
File > Open	Represents menu paths: File > Open > New Project
Bold	Displays commands, menu paths, and icon names in procedures: Click the File icon and then click Open .
Times New Roman	Displays an equation: $2 + 2 = 4$
Text in gray boxes	Describes Cautions or unique functionality of the product.

1.7 Acronyms

Table 1-2. Acronyms Used in this Document

Acronym	Description
BOM	Bill of Materials
CE	Code Example
CR	Circular Coil
DAC	Digital to Analog Converter
ESD	Electrostatic Discharge
EVK	Evaluation Kit
GPIO	General Purpose Input/Output
I2C	Inter-Integrated Circuit
IDAC	Current DAC
IDE	Integrated Design Environment
KBA	Knowledge Based Article
LE	Linear Encoder
LED	Light-Emitting Diode
PSoC	Programmable Systems-on-Chip
RE	Rotary Encoder
SQ	Square Coil
SWD	Serial Wire Debug
UART	Universal Asynchronous Receiver Transmitter
USB	Universal Serial Bus

2. Kit Operation



This chapter introduces you to different features of the Inductive Sensing Coil Breakout Board. This includes the parameters of each coil on the kit and the recommended configuration settings for use with the MagSense Component in PSoC Creator.

2.1 Theory of Operation

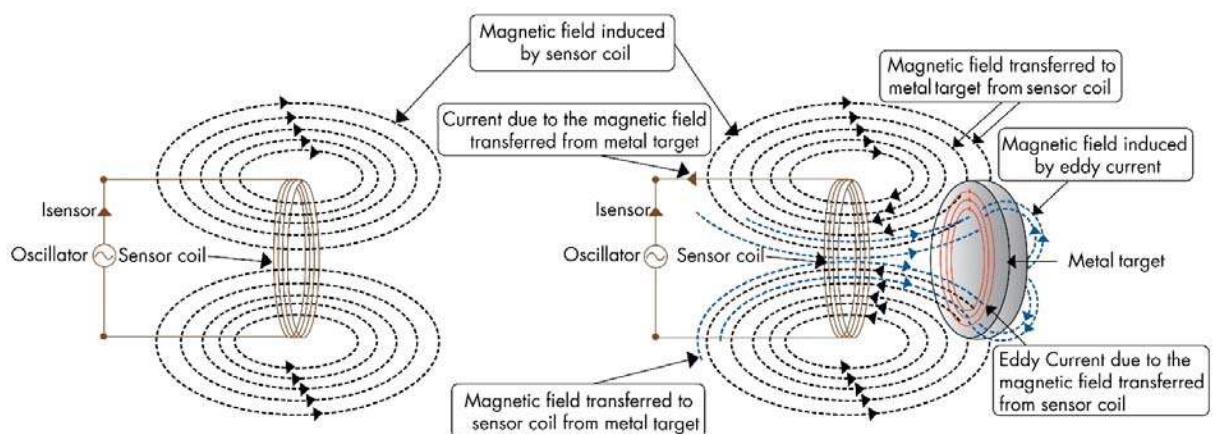
This section provides a high-level description of the principle of proximity sensing and describes where the CY8CKIT-148-COIL fits in an inductive sensing system.

2.1.1 Principle of Inductive Sensing

Inductive sensing works on the principle of electromagnetic coupling between a sensor coil and the metal target to be detected. When the metal target enters the electromagnetic field induced by a sensor coil, some of the electromagnetic energy is transferred into the metal target as shown in Figure 2-1. This transferred energy causes a circulating electrical current called an eddy current. The eddy current flowing in the metal target induces reverse electromagnetic field on the sensor coil, which results in a reduction of the effective inductance of the sensor coil.

The sensor coil is placed in parallel with a capacitor. The parallel combination of sensor inductance and the external capacitor is called a tank circuit. The reduction in the sensor coil inductance causes an upward shift in the resonant frequency of the tank circuit. This shift in resonant frequency changes the amplitude of the signal across the sensor coil. The change in the amplitude of the sensor coil signal is measured by the PSoC 4700S MCU to detect the presence of the metal target in the proximity-sensing distance. Note that the inductance of the sensor coil increases in the presence of ferromagnetic metal targets. An increase in the sensor coil inductance causes a down shift in the resonant frequency of the tank circuit.

Figure 2-1. Field Coupling between Sensor Coil and Metal Target Inductive Sensing Design Guide



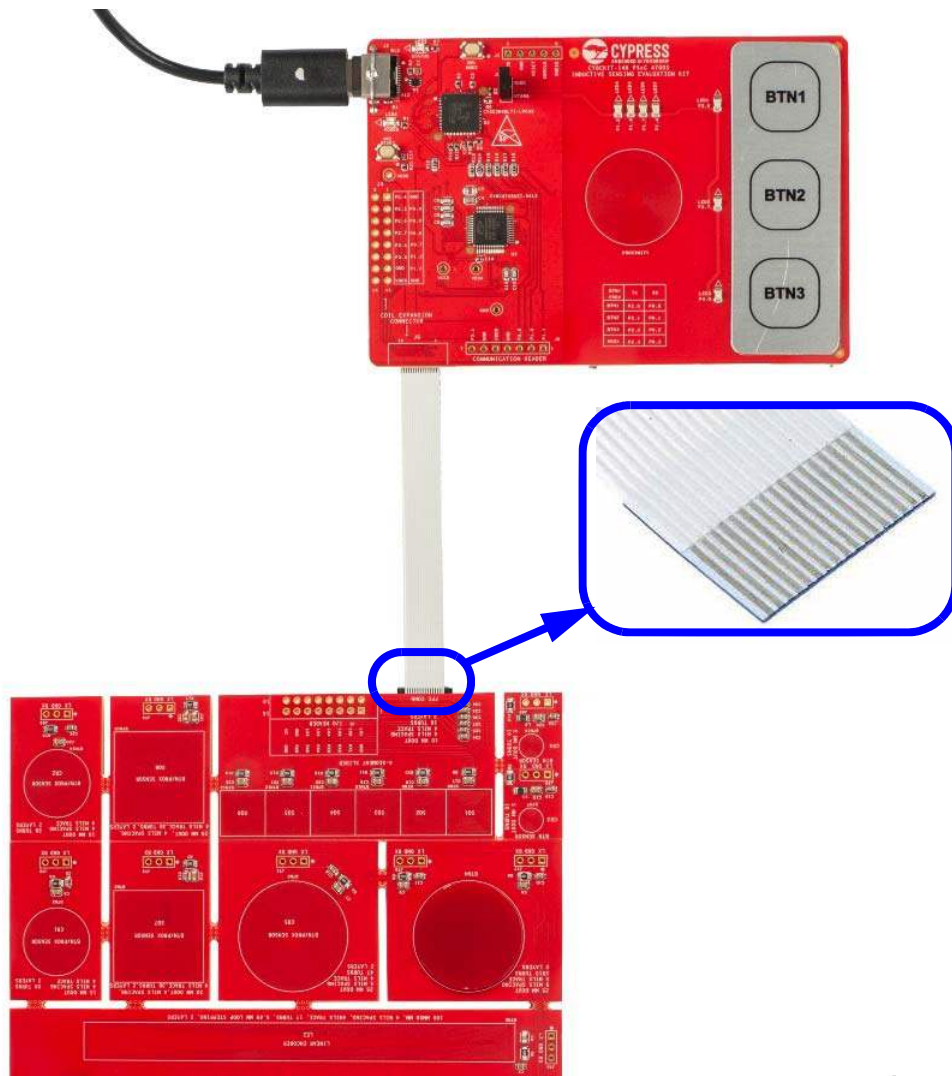
Typical applications for inductive sensing include the following:

- Proximity detection
- Mechanical open/close switches
- Buttons (industrial keypads and ON/OFF buttons)
- Rotation detection (flow meters, fan speed RPM detection, rotary control knob)
- Linear Encoders
- Spring compression detection

2.1.2 CY8CKIT-148-COIL System

The CY8CKIT-148 provides three buttons and one proximity sensor. By adding the CY8CKIT-148-COIL, additional coils which may be used as reference designs for custom inductive sensing systems are added. These sensors can be interfaced with PSoC 4700S device present on the CY8CKIT-148 PSoC 4700S Inductive Sensing Evaluation Kit.

Figure 2-2. Connection between the CY8CKIT-148-COIL kit and the CY8CKIT-148 base board using the provided FPC connector



The MagSense circuitry in the PSoC 4700S device on the CY8CKIT-148 EVK senses the changes in the inductance of the coils on the CY8CKIT-148-COIL. Based on the data the PSoC 4700S device receives, the PSoC MCU determines the presence of a conductive target object.

The PSoC device on the CY8CKIT-148 EVK may be programmed through the on-board KitProg hardware, which communicates to the software programming tool (PSoC Programmer) through the USB interface on the board. You can develop firmware applications for the PSoC 4700S to handle the inductive sensing data using PSoC Creator IDE.

CE225409 - PSoC 4700S MagSense COIL provides example projects that can be used with the CY8CKIT-148-COIL to implement custom applications.

2.2 Functional Description

2.2.1 Metal Targets

Figure 2-3. Metal Targets on the CY8CKIT-148-COIL



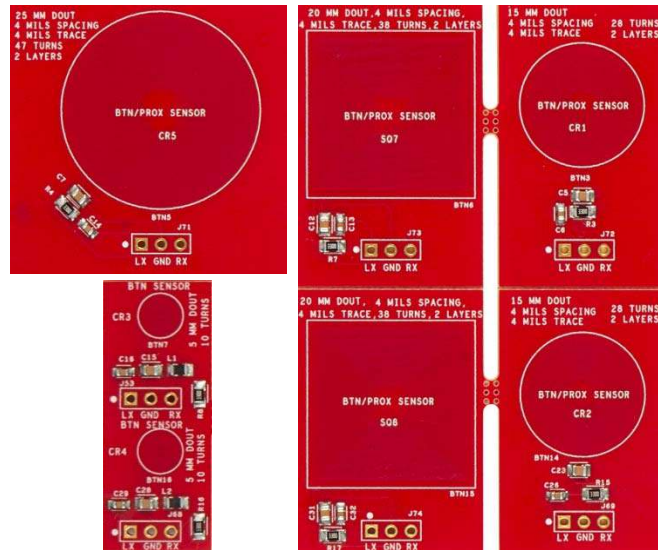
The CY8CKIT-148-COIL kit contains four metal targets, each with a different size or shape. The metal targets are meant to be broken away from the kit board and moved into the magnetic field of the desired inductive sensor.

METAL TARGET 2 as shown in [Figure 2-3](#) is a linear target designed to be moved horizontally across a sensor. As the target moves horizontally across the sensor, the sensor signal will also change linearly.

METAL TARGET 4 (Rotary Target) is a 119° arc circular target. This target can be used with the rotary encoder sensor to determine rotational position of the metal target over the sensor.

2.2.2 Multi-purpose Sensors (CR1-CR5, SQ7, SQ8)

Figure 2-4. Multi-purpose Sensors (CR1-CR5, SQ7, SQ8)



The CY8CKIT-148-COIL kit contains seven multi-purpose sensors. These sensors may be used for either proximity detection or button replacement applications.

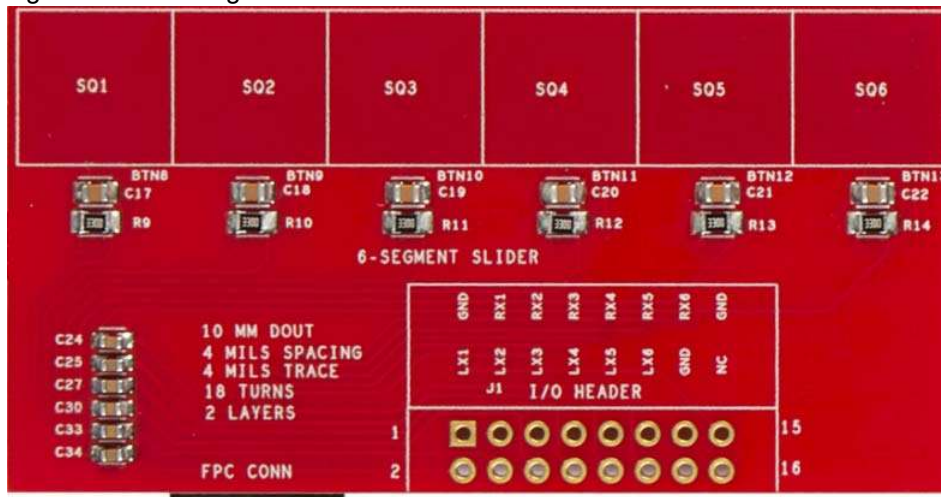
CR1 and CR2 are 15 mm circular multi-purpose sensors. CR3 and CR4 are 5 mm circular multi-purpose sensors and CR5 is a 25 mm circular multi-purpose sensor.

SQ7 and SQ8 are 20 mm square multi-purpose sensors.

Each multi-purpose sensor is capable of detecting conductive targets in close proximity to or in contact with the sensor.

2.2.3 Six-Segment Slider (SQ1-SQ6)

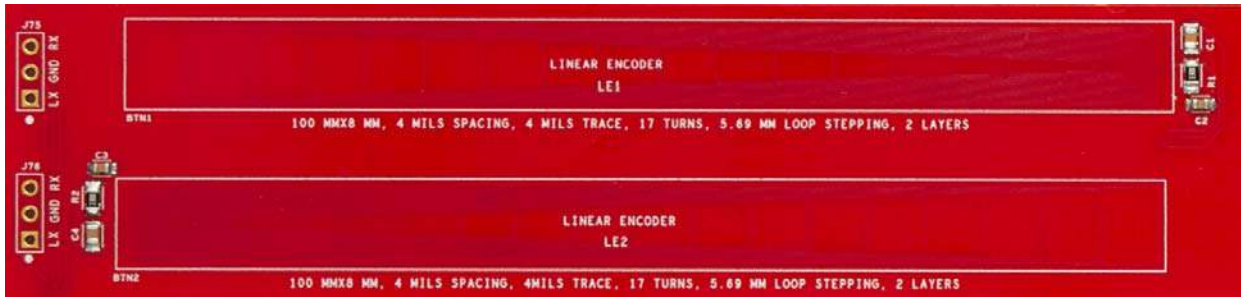
Figure 2-5. Six-Segment Slider



The CY8CKIT-148-COIL kit includes an array of six 10 mm square coils. These coils can be directly connected to the CY8CKIT-148 EVK using the FPC connector. These coils can detect horizontal position of a target above each sensor as well as gestures such as a horizontal slide.

2.2.4 Linear Encoder (LE1, LE2)

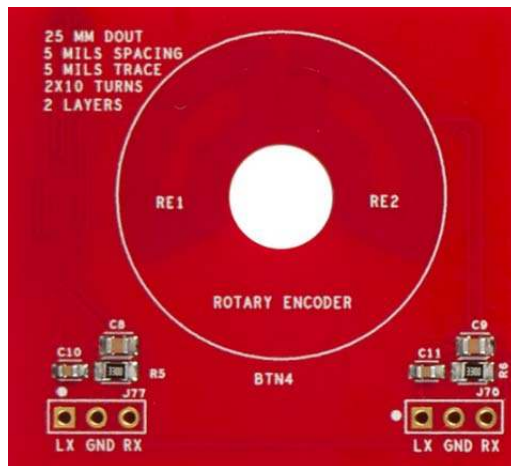
Figure 2-6. Linear Encoders



There are two 100 mm × 8 mm linear encoder coils. These coils detect horizontal movement of a METAL TARGET 2 above the sensors.

2.2.5 Rotary Encoder (RE1, RE2)

Figure 2-7. Rotary Encoder



There is a single rotary encoder on the kit. The rotary encoder consists of two 120° arc angle sensors placed adjacent to each other. The strength of the sensor signal acquired by turning METAL TARGET 4 over the sensors is translated in to rotational angle. For a description of the algorithm used to detect the rotational angle, see CE225409 - PSoC 4700S MagSense COIL.

2.3 Sensor Parameters and Recommended Settings

The following table provides the inductance values of each coil on the kit as well as the resonant frequency of each sensor. Recommended MagSense Component configuration settings are provided as well.

Table 2-1. Sensor Parameters and Recommended Settings

Sensor Parameters			Recommended Component Configuration		
Sensor	Inductance (μH)	Resonant Frequency (kHz)	Lx Clock Frequency (kHz)	IDAC Value	Sub-Conversions
LE1, LE2	28.8	653.0	648.65	71	600
RE1, RE2	4.32	522.8	500	11	300
CR1, CR2	22.5	765.3	750	45	600
CR3, CR4	$0.89 + 2.2^a$	625.1	600	15	500
CR5	113.9	329.0	320	39	300
SQ1-SQ6	7.0	641.0	615.38	26	624
SQ7, SQ8	65.2	437.0	466.02	51	585

a. Additional inductor in series (The on-board components L1 and L2 are in series with the coil traces).

In general, it is good practice to set the Component Lx clock frequency to a value slightly lower to the resonant frequency of the sensing tank circuit. In some cases, Lx clock frequency values above the center frequency may be used as the circuit has better performance at different frequencies.

2.4 Code Example

The code example CE225409 – PSoC 4700S MagSense COIL demonstrates how to use each of the coil types on the CY8CKIT-148-COIL Inductive Sensing Coil Breakout Board with the CY8CKIT-148 Inductive Sensing Evaluation Kit. There are five projects available in this code example:

- 6-Segment Slider
- Linear Encoder
- Linear Target
- Rotary Encoder
- Proximity Sensor

Each project is designed for a specific sensor. Refer the code example document for details.

A. Appendix



A.1 Board Details

The CY8CKIT-148-COIL Inductive Sensing Coil Breakout Board consists of seven types of sensors. The functionalities of all the sensors is described in [Kit Operation chapter on page 18](#). You need to know how these sensors are connected to the on-board FPC connectors or I/O headers. See the mapping between the notation of individual sensor type to the reference designator and corresponding on-board header/connector in the [Table A-1](#).

A.2 Header/Connector Details

The Coil Breakout Board has two FPC connectors and several unpopulated headers to hookup the sensors with the CY8CKIT-148 kit. See [Table A-1](#) and “[Header Connections](#)” on [page 25](#) to know the pin-mapping between this breakout board and the main CY8CKIT-148 board.

Table A-1. Reference designators, notations and headers/connectors of individual sensors

SI No	Coil	Notation	REF DES	Header	FPC Connector
1	ROTARY ENCODERS	RE1	BTN4	J77	J2
		RE2		J70	
2	25 MM CIRCULAR	CR5	BTN5	J71	Sensors not connected to any FPC connector
3	LINEAR ENCODERS	LE1	BTN1	J75	
		LE2	BTN2	J76	
4	5 MM CIRCULAR	CR3	BTN7	J53	
		CR4	BTN16	J68	
5	15 MM CIRCULAR	CR1	BTN3	J72	
		CR2	BTN14	J69	
6	20 MM SQUARE	SQ7	BTN6	J73	
		SQ8	BTN15	J74	
7	6-SEGMENT SLIDERS	SQ1, SQ2, SQ3, SQ4, SQ5, SQ6	BTN8, BTN9, BTN10, BTN11, BTN12, BTN13	J1	J3

A.2.1 Header Connections

In addition to the FPC connector (J3), a 16-pin I/O header (J1) is provided to interface the 6-segment slider with the coil expansion connector (J4) on the CY8CKIT-148 base board.

Figure A-1. I/O header connector on the Inductive Sense Breakout board

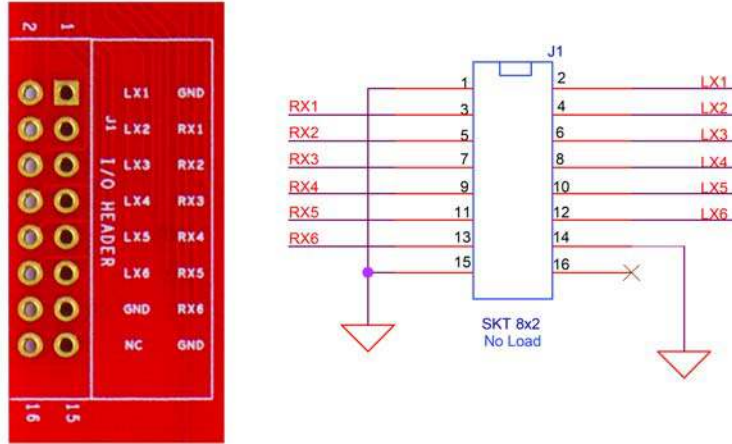


Figure A-2. Coil expansion connector on the CY8CKIT-148

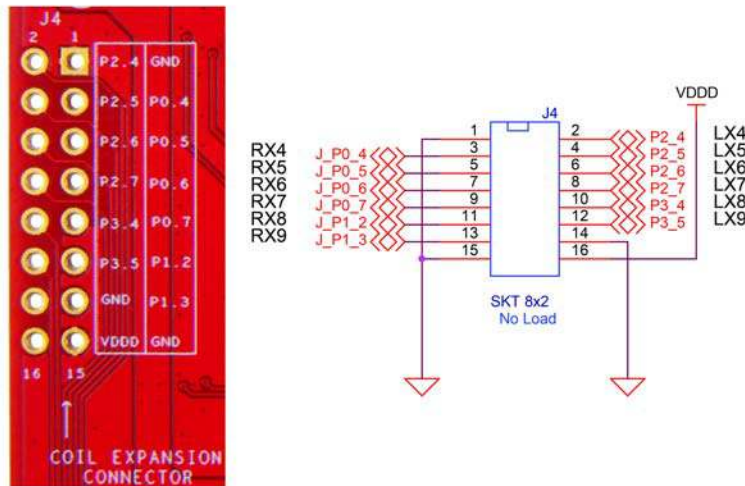
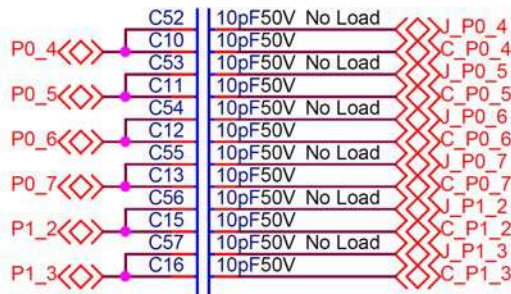


Figure A-3. Coupling capacitors of the RX connections on the CY8CKIT-148 board



The pins of J4 on CY8CKIT-148 are multiplexed with the pins of the FPC connector (J6). See the kit guide of [CY8CKIT-148](#) to learn more about the connection details. To interface the sensors through the I/O headers, remove the capacitors C10, C11, C12, C13, C15, C16, and load the capacitors C52, C53, C54, C55, C56, C57 on the CY8CKIT-148 board.

See [Table A-2](#) for pin mapping of the 16-pin headers (CY8CKIT-148 kit and the coil breakout board).

If you want to evaluate the sensors connecting through the headers, refer [Table A-2](#) and [Figure A-3](#) to know the required connection modifications.

Table A-2. Pin mapping of the coil expansion connector of the CY8CKIT-148 board and I/O headers of the CY8CKIT-148-COIL board

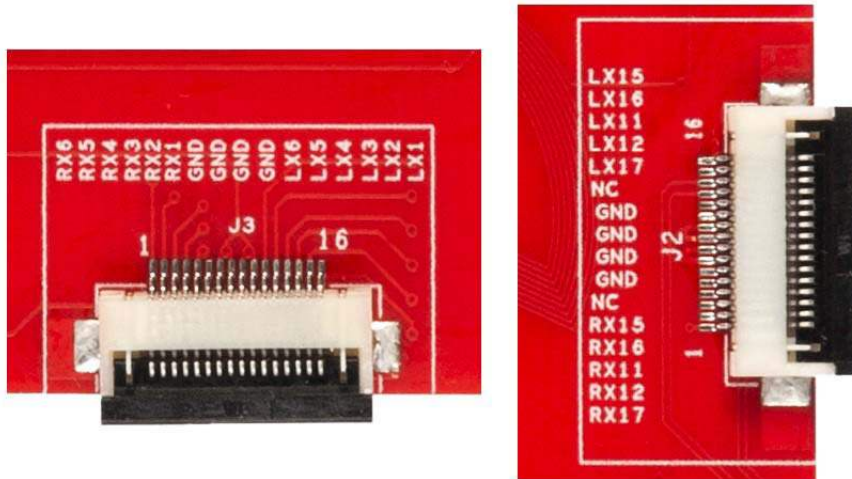
CY8CKIT-148-COIL			CY8CKIT-148		Hardware connection modification on CY8CKIT-148
I/O Header (J1) of Slider (SQ1–SQ6) ^a			Coil Expansion Connector (J4)		
Pin	Sensor Trace	Coil Name	Header pin	PSoC 4700S device pin	
1	GND	N/A	1	GND	
2	LX1	SQ1	2	P2.4	
3	RX1	SQ1	3	P0.4	Remove C10 and populate C52
4	LX2	SQ2	4	P2.5	
5	RX2	SQ2	5	P0.5	Remove C11 and populate C53
6	LX3	SQ3	6	P2.6	
7	RX3	SQ3	7	P0.6	Remove C12 and populate C54
8	LX4	SQ4	8	P2.7	
9	RX4	SQ4	9	P0.7	Remove C13 and populate C55
10	LX5	SQ5	10	P3.4	
11	RX5	SQ5	11	P1.2	Remove C15 and populate C56
12	LX6	SQ6	12	P3.5	
13	RX6	SQ6	13	P1.3	Remove C16 and populate C57
14	GND	N/A	14	GND	
15	GND	N/A	15	GND	
16	NC	N/A	16	VDDD	

a. The [Table A-2](#) is an example of interfacing the slider (SQ1 to SQ6) of CY8CKIT-148-COIL to PSoC 4700S device on CY8CKIT-148 through I/O header. If you want to connect any other sensor through header, populate the on-board I/O header as per the [Table A-1](#) and do the hardware connection modification on CY8CKIT-148 as per [Table A-2](#).

A.2.2 FPC Connector

There are two FPC Connectors provided on-board and an FPC cable. The FPC connectors and cable are required for this kit to connect to the CY8CKIT-148 kit. FPC connectors are low noise connectors which are good for MagSense functionality.

Figure A-4. On board FPC connectors



See [Table A-3](#) to know the PSoC 4700S pin connections to the header mapping between the CY8CKIT-148 kit and the coil breakout board.

Table A-3. Pin mapping of the FPC connectors (CY8CKIT-148 kit and the coil breakout board)

CY8CKIT-148-COIL						CY8CKIT-148	
FPC connector 1 (J3)			FPC connector 2 (J2)			FPC connector (J6)	
Pin	Sensor Trace	Coil Name	pin	Sensor Trace	Coil Name	Connector pin	PSoC 4700S device pin
1	LX1	SQ1	1	LX15	LE1	1	P2.4
2	LX2	SQ2	2	LX16	LE2	2	P2.5
3	LX3	SQ3	3	LX11	RE2	3	P2.6
4	LX4	SQ4	4	LX12	CR5	4	P2.7
5	LX5	SQ5	5	LX17	RE1	5	P3.4
6	LX6	SQ6	6	NC	N/A	6	P3.5
7	GND	N/A	7	GND	N/A	7	GND
8	GND	N/A	8	GND	N/A	8	GND
9	GND	N/A	9	GND	N/A	9	GND
10	GND	N/A	10	GND	N/A	10	GND
11	RX1	SQ1	11	NC	N/A	11	P0.4
12	RX2	SQ2	12	RX15	LE1	12	P0.5
13	RX3	SQ3	13	RX16	LE2	13	P0.6
14	RX4	SQ4	14	RX11	RE2	14	P0.7
15	RX5	SQ5	15	RX12	CR5	15	P1.2
16	RX6	SQ6	16	RX17	RE1	16	P1.2

A.3 CY8CKIT-148-COIL Inductive Sensing Coil Breakout Board Schematics and the Bill of Materials

The schematic and the BoM of the CY8CKIT-148-COIL board is available at the kit [webpage](#).

Revision History



Document Revision History

Document Title: CY8CKIT-148-COIL Inductive Sensing Coil Breakout Board Kit Guide				
Document Number: 002-26890				
Revision	ECN Number	Issue Date	Origin of Change	Description of Change
**	6568143	05/06/2019	TAVA / BFMC	Initial Release.