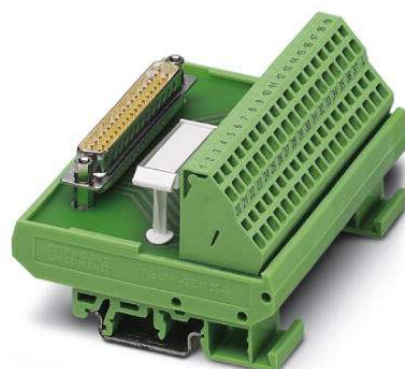


# FLKM-D15 SUB/S/ZFKDS

Order No.: 2302997

The illustration shows the version FLKM-D37 SUB/S/ZFKDS




<http://eshop.phoenixcontact.de/phoenix/treeViewClick.do?UID=2302997>

Standard 1:1 D-SUB module, with spring-cage connection and D-SUB pin strip, no. of positions 15



## Commercial data

GTIN (EAN)	 4 017918 943967
Note	Made-to-order
sales group	I011
Pack	1 pcs.
Customs tariff	85369010
Catalog page information	Page 286 (IF-2009)

## Product notes

WEEE/RoHS-compliant since:  
03/31/2006



<http://www.download.phoenixcontact.com>  
Please note that the data given here has been taken from the online catalog. For comprehensive information and data, please refer to the user documentation. The General Terms and Conditions of Use apply to Internet downloads.

## Technical data

### General data

Nominal voltage $U_N$	125 V AC/DC
Max. current carrying capacity per branch	2.5 A
	1.5 A (with even load on all branches)

Number of positions	15
Width	45 mm
Height	77 mm
Depth	52 mm
Ambient temperature (operation)	-20 °C ... 50 °C
Ambient temperature (storage/transport)	-20 °C ... 70 °C
Mounting position	Any
Standards/regulations	IEC 60664
	DIN EN 50178
	IEC 62103
Pollution degree	2
Surge voltage category	II

#### Connection data

Connection 1	PCB connection
Type of connection	Spring-cage connection
Conductor cross section solid min.	0.2 mm <sup>2</sup>
Conductor cross section solid max.	4 mm <sup>2</sup>
Conductor cross section stranded min.	0.2 mm <sup>2</sup>
Conductor cross section stranded max.	2.5 mm <sup>2</sup>
Conductor cross section AWG/kcmil min.	24
Conductor cross section AWG/kcmil max	12
Connection 2	D-SUB connection

#### Certificates / Approvals



Certification

CUL, UL

Accessories		
Item	Designation	Description
<b>Cable/conductor</b>		
2302421	CABLE D-SUB-B-B-S/.../.../...	Shielded round cable, assembled with two D-SUB female connectors, variable cable length
2302340	CABLE D-SUB-S/.../.../...	Shielded round cable, assembled with one D-SUB male and one female connector, variable cable length
2926085	CABLE-D-15SUB/F/OE/0,25/S/0,5M	Shielded cable with a 15-pos. D-SUB female connector and one open end. The individual wires are labeled 1 to 15 and fitted with ferrules. The braided shield is routed to a separate cable end. Cable length: 0.5 m.
2926098	CABLE-D-15SUB/F/OE/0,25/S/1,0M	Shielded cable with a 15-pos. D-SUB female connector and one open end. The individual wires are labeled 1 to 15 and fitted with ferrules. The braided shield is routed to a separate cable end. Cable length: 1 m.
2926108	CABLE-D-15SUB/F/OE/0,25/S/1,5M	Shielded cable with a 15-pos. D-SUB female connector and one open end. The individual wires are labeled 1 to 15 and fitted with ferrules. The braided shield is routed to a separate cable end. Cable length: 1.5 m.
2926111	CABLE-D-15SUB/F/OE/0,25/S/2,0M	Shielded cable with a 15-pos. D-SUB female connector and one open end. The individual wires are labeled 1 to 15 and fitted with ferrules. The braided shield is routed to a separate cable end. Cable length: 2 m.
2926124	CABLE-D-15SUB/F/OE/0,25/S/3,0M	Shielded cable with a 15-pos. D-SUB female connector and one open end. The individual wires are labeled 1 to 15 and fitted with ferrules. The braided shield is routed to a separate cable end. Cable length: 3 m.
2926137	CABLE-D-15SUB/F/OE/0,25/S/4,0M	Shielded cable with a 15-pos. D-SUB female connector and one open end. The individual wires are labeled 1 to 15 and fitted with ferrules. The braided shield is routed to a separate cable end. Cable length: 4 m.
2926140	CABLE-D-15SUB/F/OE/0,25/S/6,0M	Shielded cable with a 15-pos. D-SUB female connector and one open end. The individual wires are labeled 1 to 15 and fitted with ferrules. The braided shield is routed to a separate cable end. Cable length: 6 m.
2302052	CABLE-D15SUB/B/S/ 50/ KONFEK/S	Round shielded cable set, with 15-pos. D-SUB female and male connectors, cable length: 0.5 m
2302065	CABLE-D15SUB/B/S/100/ KONFEK/S	Round shielded cable set, with 15-pos. D-SUB female and male connectors, cable length: 1 m
2302078	CABLE-D15SUB/B/S/150/ KONFEK/S	Round shielded cable set, with 15-pos. D-SUB female and male connectors, cable length: 1.5 m
2302081	CABLE-D15SUB/B/S/200/ KONFEK/S	Round shielded cable set, with 15-pos. D-SUB female and male connectors, cable length: 2 m
2302094	CABLE-D15SUB/B/S/300/ KONFEK/S	Round shielded cable set, with 15-pos. D-SUB female and male connectors, cable length: 3 m

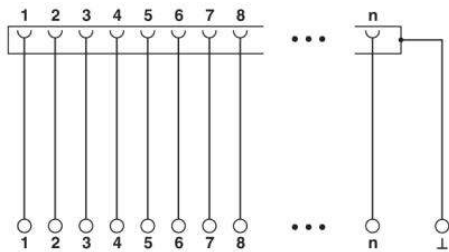
2302104	CABLE-D15SUB/B/S/400/ KONFEK/S	Round shielded cable set, with 15-pos. D-SUB female and male connectors, cable length: 4 m
2302117	CABLE-D15SUB/B/S/600/ KONFEK/S	Round shielded cable set, with 15-pos. D-SUB female and male connectors, cable length: 6 m

**General**

2900905	CABLE-D-15SUB-F-OE-0,25- S/...	Shielded cable with a 15-pos. D-SUB female connector and one open end. The individual wires are labeled 1 to 15 and fitted with ferrules. The braided shield is routed to a separate cable end. Cable length: variable.
---------	-----------------------------------	---

**Diagrams/Drawings**

Circuit diagram



**Address**

PHOENIX CONTACT Deutschland GmbH  
Flachmarktstr. 8  
32825 Blomberg, Germany  
Phone +49 5235 3 12000  
Fax +49 5235 3 41200  
<http://www.phoenixcontact.de>



© 2011 Phoenix Contact  
Technical modifications reserved;