

Amphenol  
FCi

© 2016 AFCI

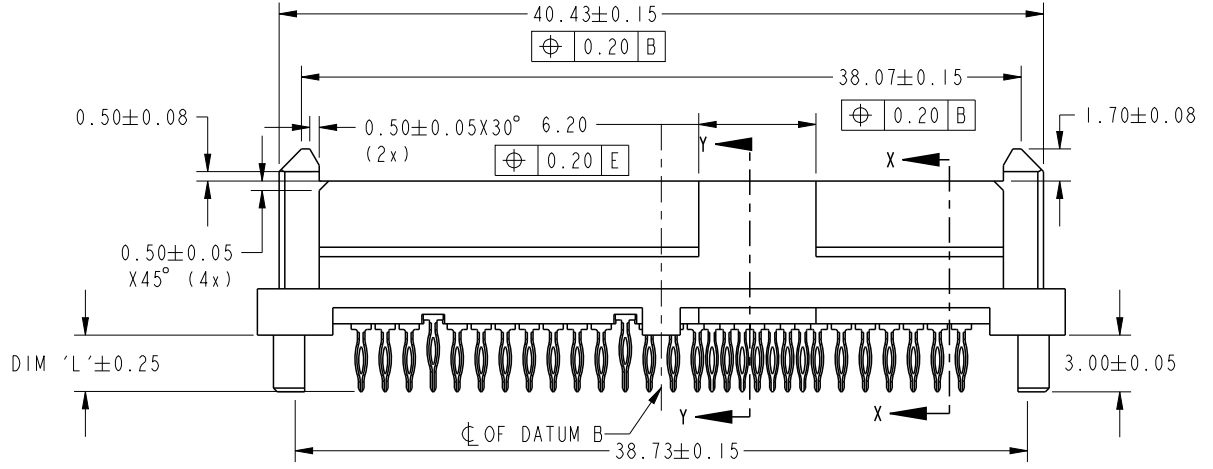
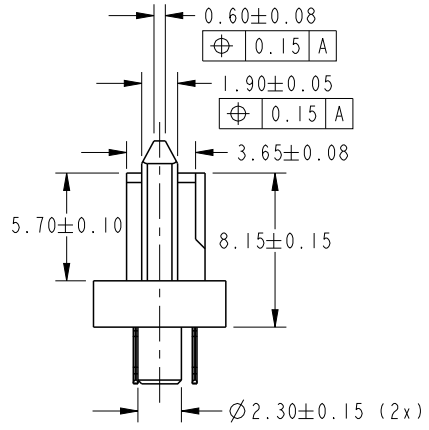
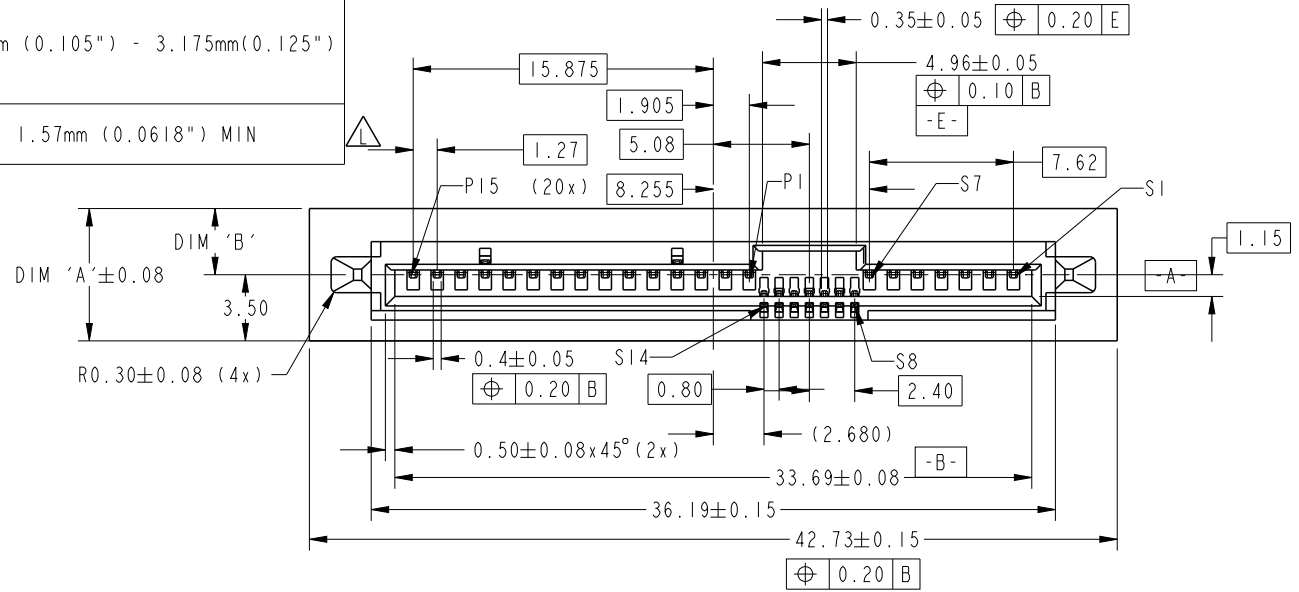
A

B

C

D

PRODUCT NO	DIM 'A'	DIM 'B'	DIM 'L'	PLATING	RECOMMENDED P.C. BOARD THICKNESS
10045782-001LF	7.00	3.50	3.50	NOTE 2	2.67mm (0.105") - 3.175mm(0.125")
10045782-011LF	6.00	2.50		NOTE 3	
10045782-001	7.00	3.50			
10045782-011	6.00	2.50	2.70	NOTE 2	1.57mm (0.0618") MIN
10045782-002LF	7.00	3.50			
10045782-012LF	6.00	2.50			



spec ref	SEE NOTES		
tolerance std	TOLERANCES UNLESS OTHERWISE SPECIFIED		
ASME Y14.5	0.X	±0.2	
	0.XX	±0.2	
	0.XXX	±0	
surface	angular	0°	±2°

dr	w wadmin	2005/10/11
eng	Noorhazelinda	2016/07/12
chr	-	-
appr	Koon-Poh Tay	2016/07/18

projection	MM
size	A4
scale	3:1
ecn no	ELX-M-24482-1
product family	SAS
rel level	Released

Amphenol FCi	SAS RECEPTACLE PF STAGGER		dwg no 10045782	rev L
	cat. no.	Product - Customer Drw		

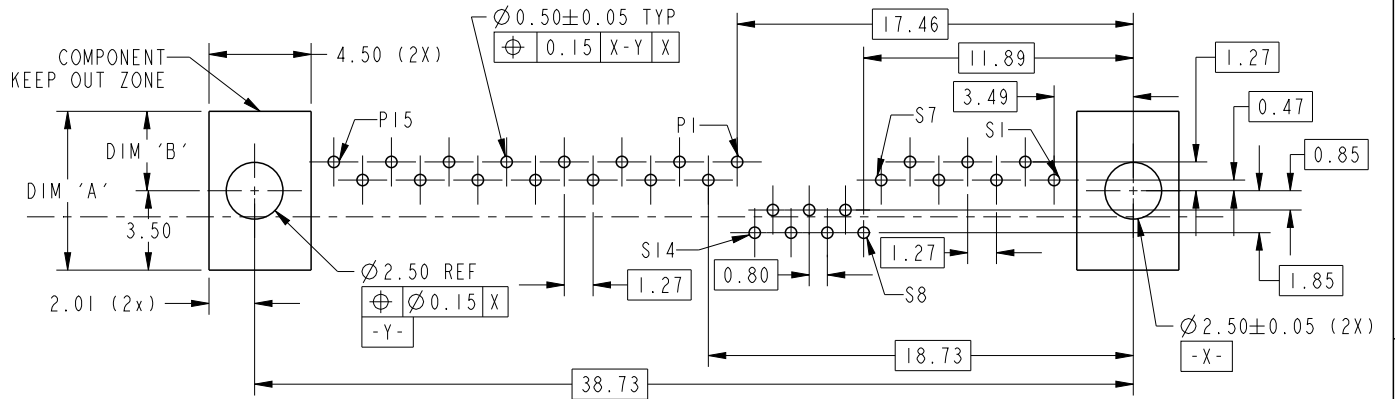
A

B

C

D

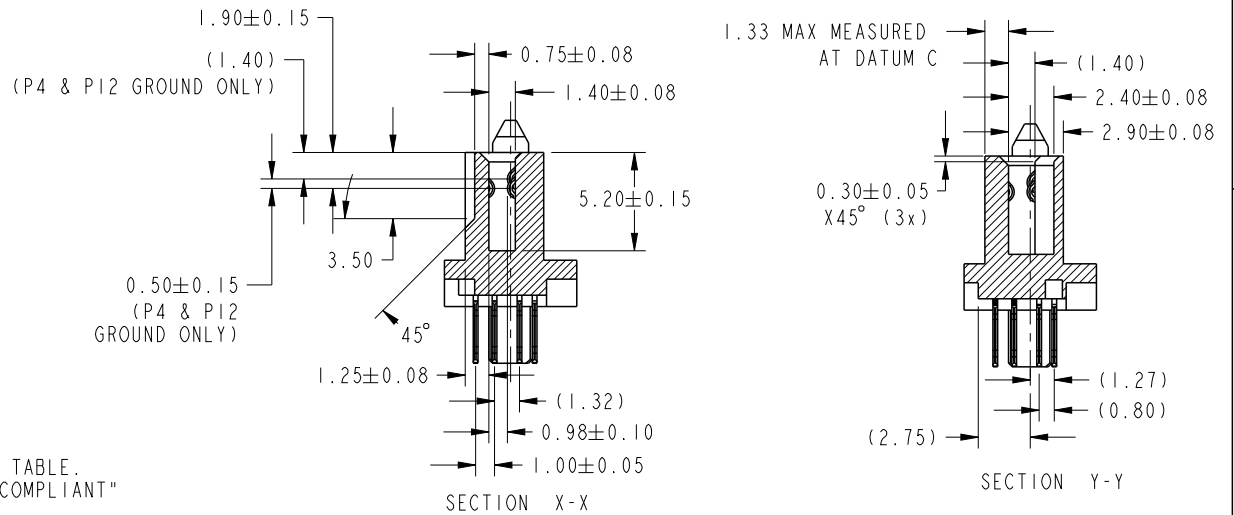
PRODUCT NO		
SEE TABLE		
HOLE	A	REMARK
HOLE DIAMETER AFTER PLATING	0.45-0.55 mm	FOR -XXX & -XXXLF
DRILLED HOLE	0.58-0.62 mm	
COPPER PLATING	25-50 $\mu$ m	
Sn PLATING	5-15 $\mu$ m	FOR -XXXLF ONLY
Sn-Pb PLATING	5-15 $\mu$ m	FOR -XXX ONLY



RECOMMENDED PCB LAYOUT

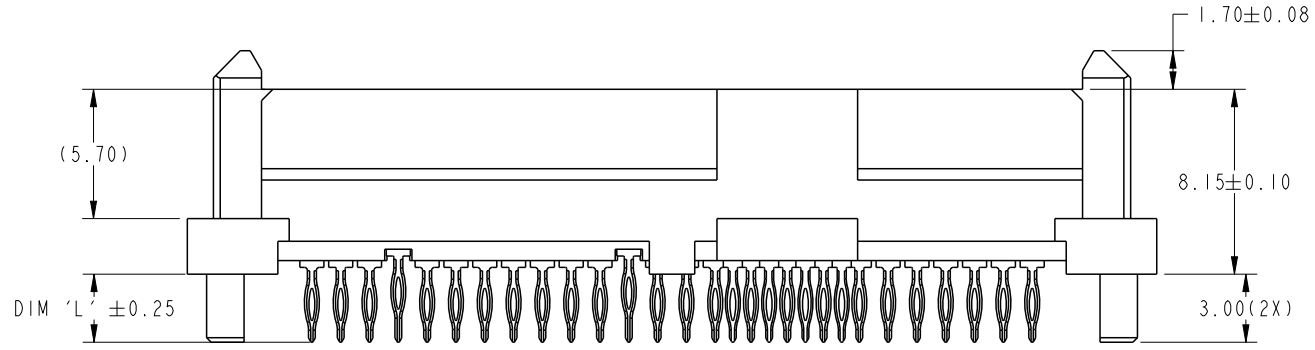
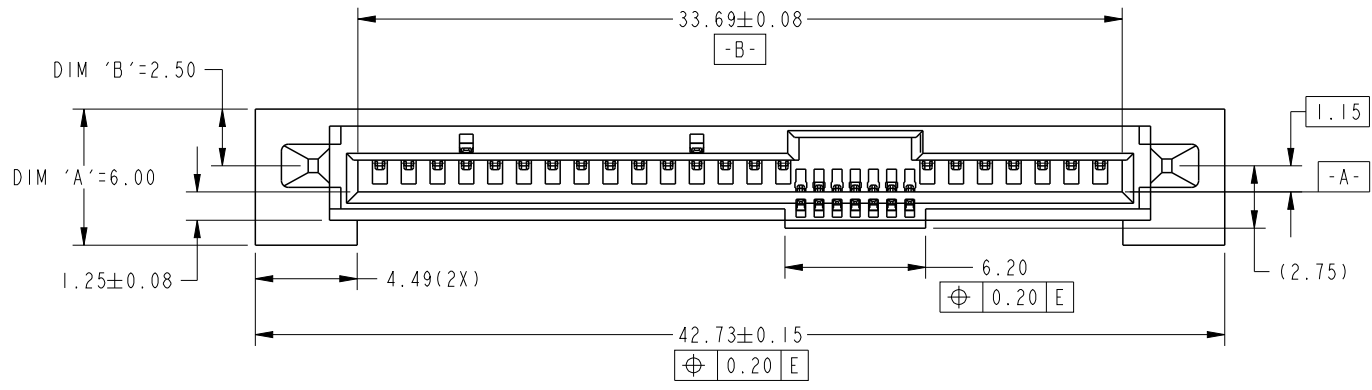
NOTE:

- MATERIAL:
  - HOUSING: HIGH TEMPERATURE THERMOPLASTIC, UL 94V-0  
COLOUR: BLACK
  - TERMINAL; COPPER ALLOY
  - HOLD DOWN: COPPER ALLOY
- FINISH (LEAD-FREE):
  - TERMINAL: 30 $\mu$ m Au PLATING (CONTACT POINT) OVER 50 $\mu$ m NICKEL
  - PRESSFIT TAIL: 20 $\mu$ m MIN - 60 $\mu$ m MAX Sn OVER 50 $\mu$ m NICKEL
  - HOLD DOWN: 50 $\mu$ m min Sn-Pb OVER 50 $\mu$ m NICKEL
- FINISH (TIN LEAD):
  - TERMINAL: 30 $\mu$ m Au PLATING (CONTACT POINT) OVER 50 $\mu$ m NICKEL
  - PRESSFIT TAIL: 20 $\mu$ m MIN - 60 $\mu$ m MAX Sn-Pb OVER 50 $\mu$ m NICKEL
  - HOLD DOWN: 50 $\mu$ m min Sn-Pb OVER 50 $\mu$ m NICKEL
- PER SFF REV 1.4 EXCEPT 0.8mm PITCH BUMP AREA.
- THE HOUSING WILL WITHSTAND EXPOSURE TO 260°C PEAK TEMPERATURE FOR 10 SECONDS IN A CONVECTION, INFRA-RED OR VAPOR PHASE REFLOW OVEN.
- THIS PRODUCT MEETS EUROPE UNION DIRECTIVES AND OTHER COUNTRY REGULATIONS AS DESCRIBED IN GS-22-008.
- A  $\triangle$  SYMBOL WILL BE NEXT TO ANY DIMENSION, VIEW, OR NOTE WHICH HAS BEEN MODIFIED WITH THE CURRENT REVISION.
- NOTE 6 NOT APPLICABLE TO TIN LEAD PLATING P/N XXXXXXXX-XXX IN TABLE.
- TIN/LEAD PLATED PRESS-FIT CONNECTORS ARE CONSIDERED EU "ROHS COMPLIANT" WITH THE EXEMPTION ALLOWED FOR COMPLIANT PIN CONNECTORS.



spec ref	SEE NOTES			dr	w cadmin	2005/10/11	projection	MM	size	A4	scale	1:1	
tolerance std	TOLERANCES UNLESS OTHERWISE SPECIFIED			eng	Noorhazelinda	2016/07/12			←→	ecn no	ELX-M-24482-1		
ASME Y14.5				chr	-	-				product family	rel level	Released	
surface	linear	0.X	±0.2	Amphenol FCI	SAS RECEPTACLE PF STAGGER			dwg no	10045782			rev	L
		0.XX	±0.2		cat. no.	Product - Customer Drw			sheet 2 of 3				
	angular	0°	±2°										

PRODUCT NO	DIM 'A'	DIM 'B'	DIM 'L'	PLATING	RECOMMENDED P.C. BOARD THICKNESS
10045782-021LF	6.00	2.50	3.50	NOTE 2	2.67mm (0.105") - 3.175mm(0.125")
10045782-021				NOTE 3	



NOTES:  
ALL OTHER UNSPECIFIED DIMENSIONS, REFER TO SHEET 1 & 2

SCALE 3:1

spec ref	SEE NOTES			dr	w wcadmin	2005/10/11	projection	MM	size	A4	scale	1:1
tolerance std	TOLERANCES UNLESS OTHERWISE SPECIFIED			eng	Noorhazlinda	2016/07/12				ecn no	ELX-M-24482-1	
ASME Y14.5				chr	-	-				product family	SAS	rel level
surface		linear	0.X	±0.2		SAS RECEPTACLE PF STAGGER		dwg no 10045782	rev L			
				0.XX		±0.2	cat. no.			Product - Customer Drw		sheet 3 of 3
		angular	0°	±2°								