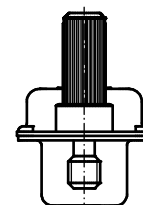
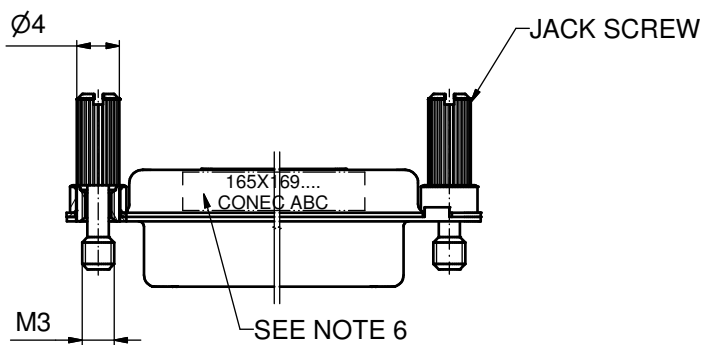
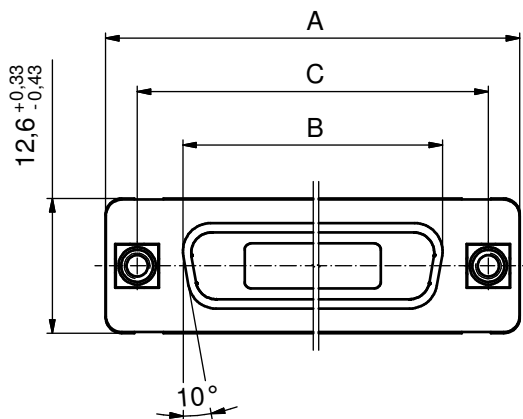
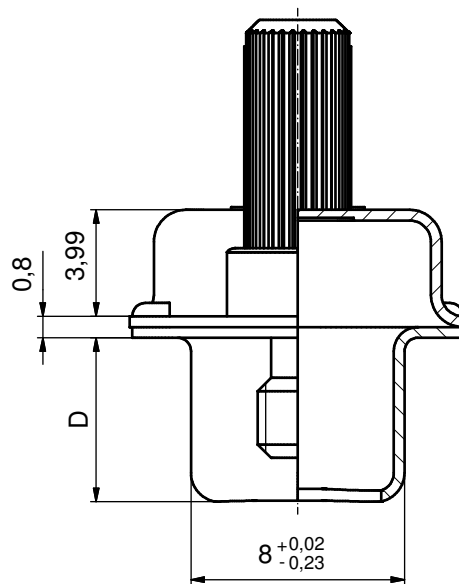


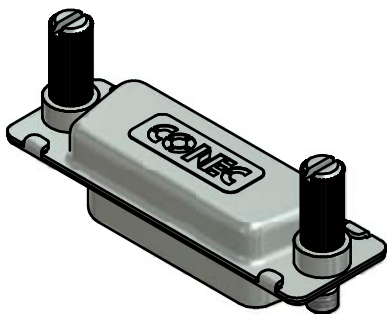
(b)

No. of pos.	A _{-0,76}	B _{+0,25}	C	D _{-0,3}	Part-No. Bulk package	Part-No. Single package
9	31,19	16,79	25,00 ^{+0,12} _{-0,13}	6,12	165X16959X	165X16959XE
15	39,52	25,12	33,30 ^{+0,15} _{-0,1}	6,12	165X16969X	165X16969XE
25	53,42	38,84	47,04 \pm 0,13	5,99	165X16979X	165X16979XE
37	69,70	55,30	63,50 \pm 0,13	5,99	165X16989X	165X16989XE
50	67,31	52,68	61,10 ^{+0,14} _{-0,11}	5,99	165X16999X	165X16999XE



NOTES:

1. METALSHHELLS: STEEL; min. 315µm TIN over 40-80µm NICKEL
2. THREADED INSERTS: COPPER ALLOY; min. 200µm TIN over 80µm NICKEL
3. COLLARS: COPPER ALLOY; min. 200µm TIN over 80µm NICKEL
4. JACKSCREWS: STEEL; NICKEL PLATED
5. MAXIMUM TORQUE VALUE FOR THREAD: 6in.LB
6. CONNECTOR IS PART MARKED: **PART-NO. CONEC ABC**



Directive 2002/95/EC RoHS compliant

THIS DRAWING MAY NOT BE COPIED OR REPRODUCED IN ANY WAY, AND MAY NOT BE PASSED ON TO A THIRD PARTY WITHOUT WRITTEN PERMISSION. OWNERSHIP AND COPYRIGHT OF CONEC GmbH DO NOT ALTER CAD DRAWING BY HAND				tolerance		scale: 2:1
				date	name	material: SEE NOTES
				drawn	11.05.10	Petker
				appd.	11.05.10	Fischer
				norm		
				d-old		
2 x b	Ä4160	15.11.2011	K.H.	title: (b) SCREEN CAP 9-50pos. FOR PLUG CONNECTOR with threaded insert and jackscrew		
a	Original					
rev.	description	date	name			sh: 1
						part no:
						title: (b) SCREEN CAP 9-50pos. FOR PLUG CONNECTOR with threaded insert and jackscrew
						dwg no: 16K1A2656
						part no: SEE TABLE