

PRODUCT NUMBER

10130186-YXXXXLF

PLATING

S = 0.38µm GOLD/GXT
ON CONTACT AREA
3.81µm TIN LEAD
ON TAIL

G = 0.76µm GOLD/GXT
ON CONTACT AREA
3.81µm TIN LEAD ON TAIL.

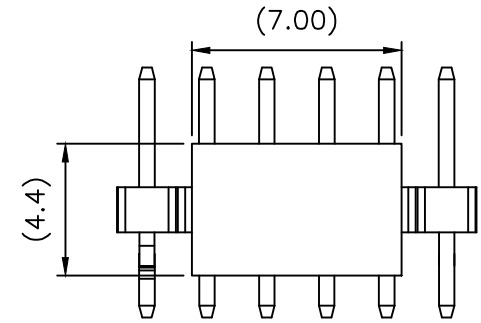
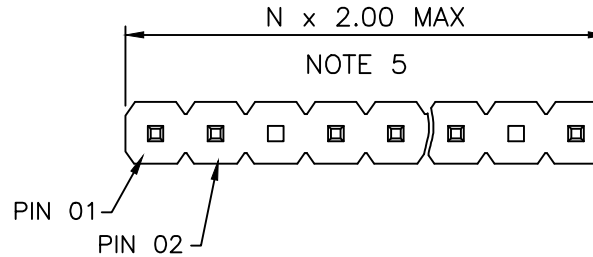
F = GOLD FLASH
ON CONTACT AREA
3.81µm TIN LEAD ON TAIL.

T = 2.0-6.0µm FULL MATTE TIN

UNDERLAYER 1.27µm Ni MIN

- RoHS COMPATIBLE
SEE NOTE 6
- PACKAGING OPTIONS, NOTE 4
- PIN STYLE SEE SHEET 2

TOP VIEW



NOTES:

1. HOUSING MAT'L : HIGH TEMPERATURE THERMOPLASTIC. UL94V-0 COLOR: BLACK
2. PIN MATERIAL : PHOSPHOR BRONZE
3. 7N MIN RETENTION IN EITHER DIRECTION

4. PACKAGING OPTIONS:

- = POLY BAGS
- A = TAPE & REEL WITH CAP, AS AVAILABLE
- U = TUBE WITHOUT PICK-UP CAP

5. TO DETERMINE DIMENSIONS :

N = NUMBER OF POSITIONS PER ROW
EXAMPLE : 8 POS N x 2.00 = 16.00mm

6. RoHS COMPATIBLE PRODUCT SPECIFICATIONS

a - PLATING:

- "LF" MEANS THE PRODUCT IS LEAD-FREE, 2µm MINIMUM MATTE TIN OVER 1.27µm MINIMUM NICKEL UNDERPLATE.

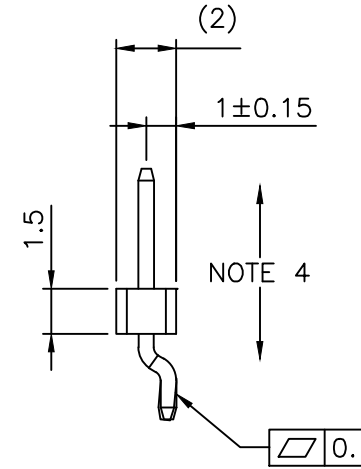
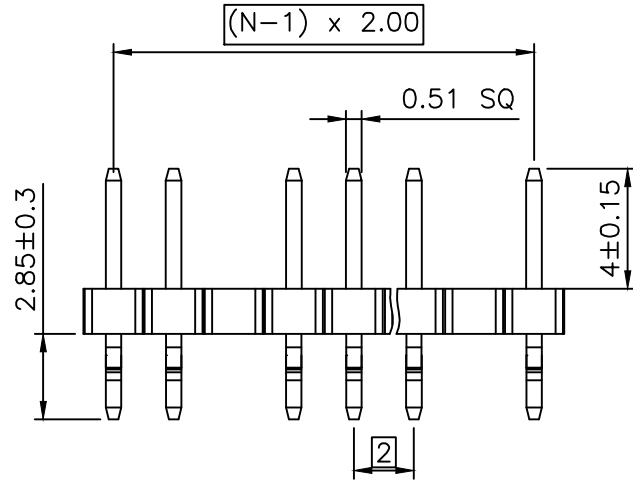
b - MANUFACTURING PROCESS COMPATIBILITY

- THE HOUSING WILL WITHSTAND EXPOSURE TO 260°C PEAK TEMPERATURE FOR 30 SECONDES IN A CONVECTION, INFRA-RED OR VAPOR PHASE REFLOW OVEN.

c - LABELING:

- MEETS PACKAGING SPECS AS PER GS-14-920

d - LEGAL STATEMENT: SEE GS-47-0004

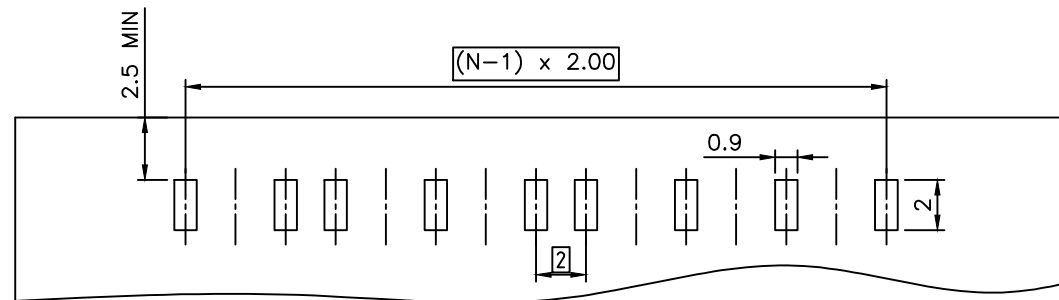


Copyright FCI

mat'l. code		surface		tolerance		projection		product family	
		ISO 1302 ✓		ISO 406 ISO 1101		mm		MINITEK	
ltr		ecn no		dr		date		title	
A		---		LMU		15.10.19		UNSH MTK HDR 2mm	
B		F-22381		BVE		15.11.03		SR SMT HORIZ POLARIZED	
C		F-23054		AMA		16.01.15		scale 5:1	
		dr		L.MULIN		14.05.14		dwg no	
		enr		J.COMPAGNON		14.05.14		sheet 1 of 2	
		chr						size	
		appd		JCO		14.05.14		10130186 A3	
sheet		revision		C		B		type	
index		sheet		1		2		CUSTOMER Drawing	

STYLE	NB OF POSITIONS	NB OF CONTACTS	CONTACTS LOADED AS PER TOP VIEW														
			1	2	3	4	5	6	7	8	9	10	11	12	13	14	15
01	15	9	X		X	X		X		X	X		X		X		X
02	15	9	X		X		X		X	X		X		X	X		X
03	04	3	X		X	X											
04	04	3	X	X		X											

RECOMMENDED LAYOUT PAD SHOULD BE LOADED ACCORDING TO STYLE



mat'l. code		surface		tolerance		projection		product family		
		ISO 1302 ✓		ISO 406 ISO 1101				MINITEK		
ltr	ecn no	dr	date	tolerances unless otherwise specified		mm		title		
A	---	LMU	15.10.19	angles	x.x ±0.3	← mm →		UNSH MTK HDR 2mm		
B	F-22381	BVE	15.11.03	linear	x.xx ±0.13	scale 5:1		SR SMT HORIZ POLARIZED		
					x.xxx ±0.05			dwg no		
				dr	L.MULIN	14.05.14			sheet 2 of 2	
				enr	J.COMPAGNON	14.05.14			10130186	
				chr					A3	
				appd	JCO	14.05.14	type		CUSTOMER Drawing	
sheet index	revision sheet									