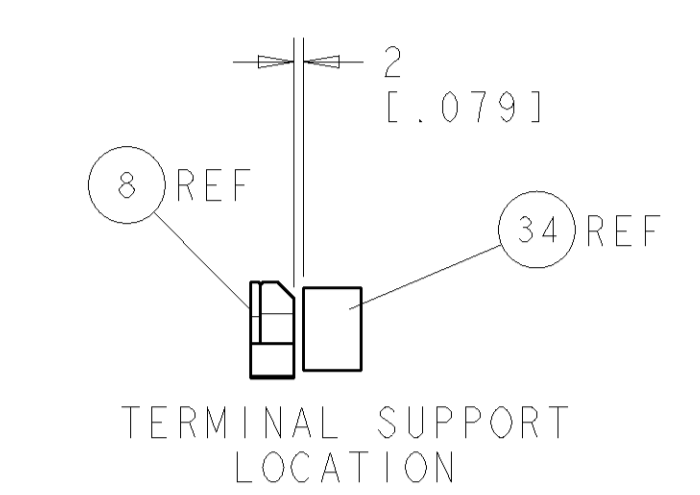
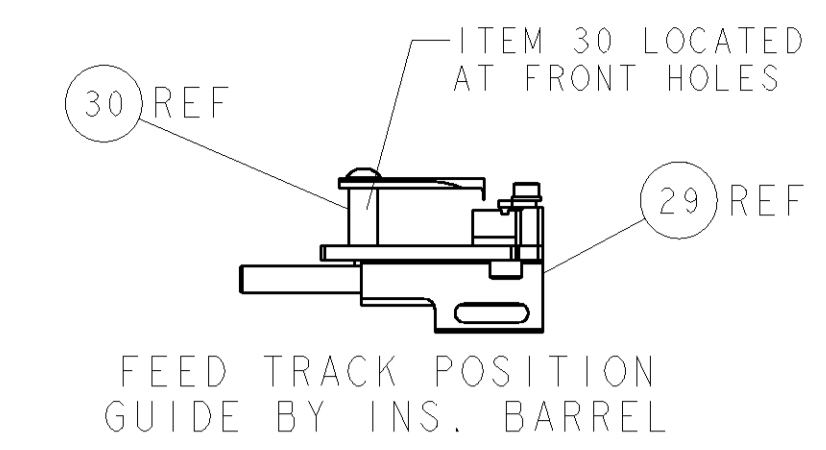
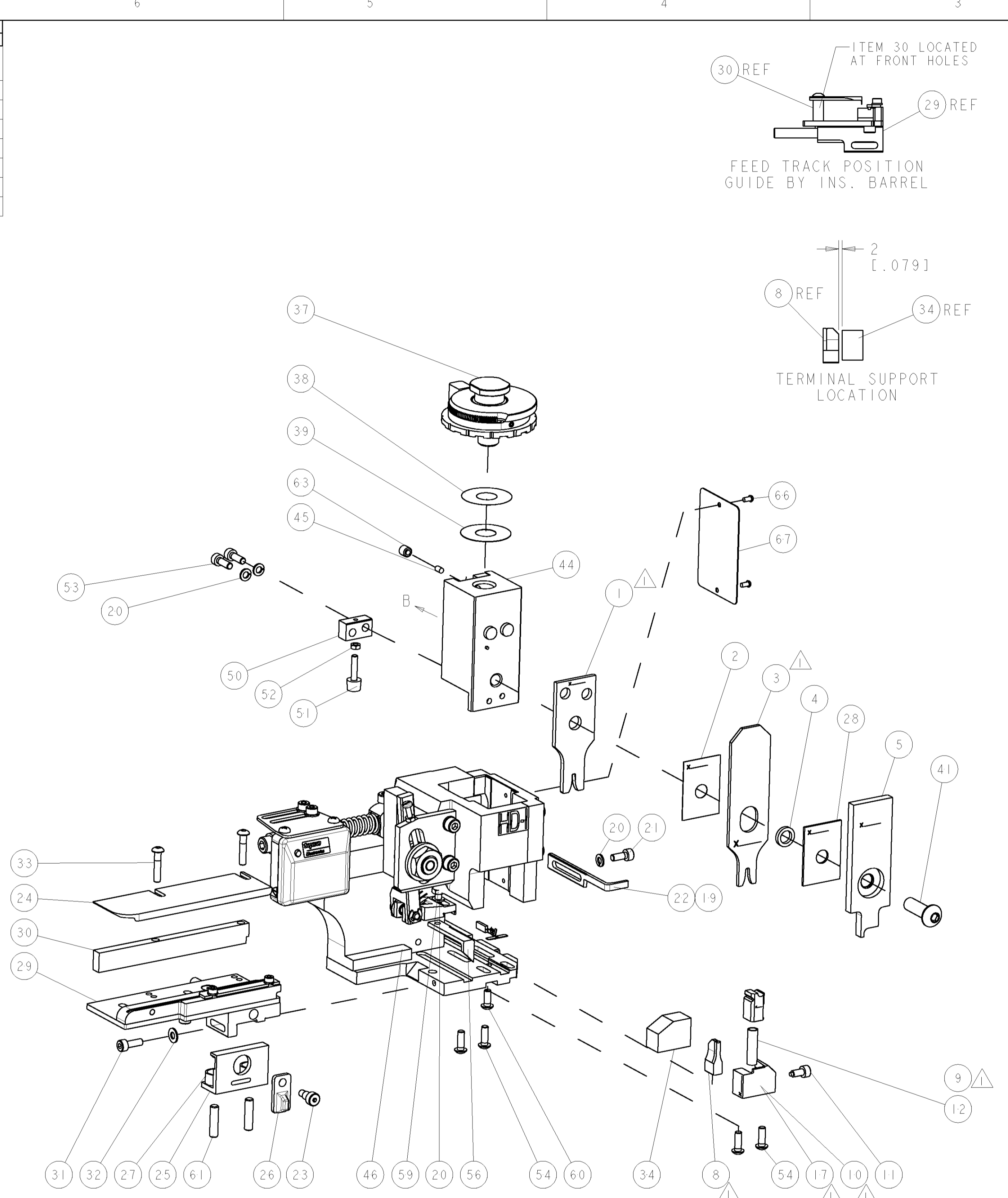
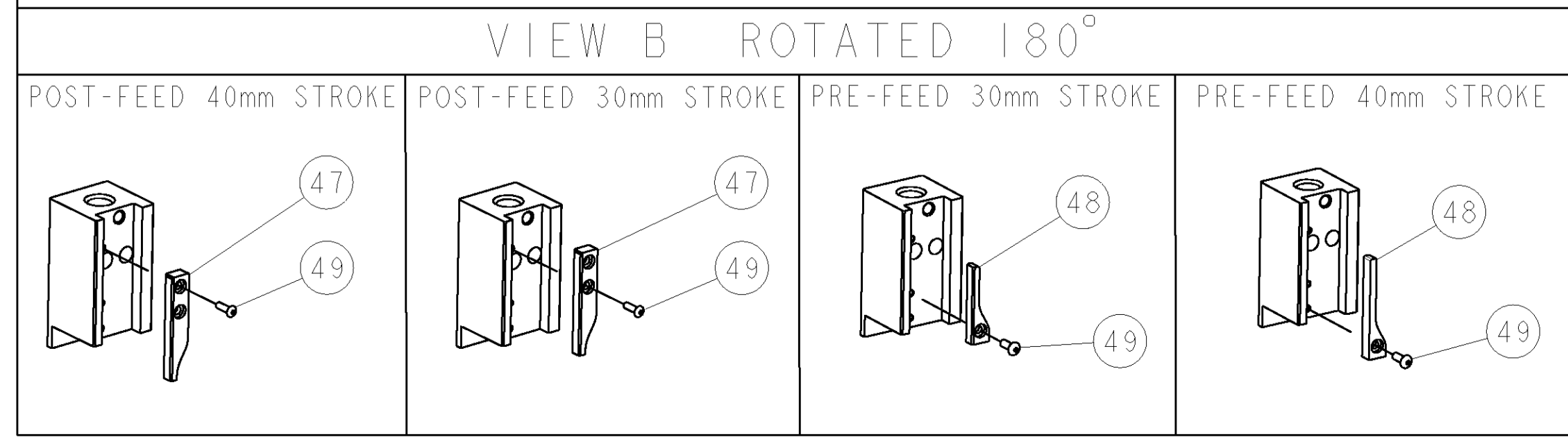


PART NUMBER	REV	TERMINATOR	FEED TYPE	DESCRIPTION
1530030-1	A	LEADMAKER	MECH POST FEED	CUTS CARRIER
1530030-2	A	BENCH	MECH PRE FEED	CUTS CARRIER
1530030-6	A	LEADMAKER	MECH POST FEED	CONTINUOUS CARRIER
7-1530030-1	A	LEADMAKER	MECH POST FEED	-1 AND SPARE PARTS
7-1530030-2	A	BENCH	MECH PRE FEED	-2 AND SPARE PARTS
7-1530030-6	A	LEADMAKER	MECH POST FEED	-6 AND SPARE PARTS
7-1530030-7	A	-	-	SPARE PARTS KIT

CRIMP DATA		FCI TERMINAL		FCI CRIMP SPECS	
TERMINAL NAME: FCI 2.8mm DCS2 FEMALE					
CRIMP	SIZE	TYPE	RANGE		
WIRE	2.08 [1.082 IN]	F	0.5-1.0mm <sup>2</sup>		
INSUL	2.84 [1.112 IN]	O	Ø1.4-2.1 [1.055-1.083 IN]		
WIRE STRIP LENGTH 3.50-3.88 [1.138-1.153 IN]		APPL INSTRUCTIONS 408-8322 & 408-8490			
TERMINAL APPL SPEC	NONE	-	FEED		14.00 [1.551 IN]
TERMINALS APPLIED					
TE PN	MFR PN				
1572889	60012831				
WIRE SIZE	CRIMP HEIGHT	REF SETTING			
1.00mm <sup>2</sup>	1.35 ± 0.05 [1.053 ± 0.002 IN]	B-6			
0.75mm <sup>2</sup>	1.27 ± 0.05 [1.050 ± 0.002 IN]	C-1			
0.50mm <sup>2</sup>	1.20 ± 0.05 [1.047 ± 0.002 IN]	C-7			

- △ RECOMMENDED SPARE PARTS.
- GREASE RAM, CAM, CAM FOLLOWER AND FEED ROD LIGHTLY.
  - CERTAIN TERMINALS REQUIRE LUBRICATION. REFER TO THE APPLICATOR INSTRUCTION SHEET FOR MORE INFORMATION.
  - LUBRICATE DAILY PER THE APPLICATOR INSTRUCTION SHEET SUPPLIED WITH THE APPLICATOR.

\* WARNING  
ON INSTALLATION, SET WIRE DISC TO LARGEST WIRE SIZE SETTING. USE OF SETTINGS BELOW MIN. REQUIRED CRIMP HEIGHT SETTING WILL CAUSE DAMAGE TO CRIMP TOOLING.



ITEM NO	DESCRIPTION	ITEM NO
84		
83		
82		
81		
80		
79		
78		
77		
76		
75		
74		
ITEM NO	DESCRIPTION	ITEM NO
-77	-76	-72
-71	-6	-2
-1	PART NO	DESCRIPTION

SET UP GAGE  
458637-3

LOC	DIST	REV	DATE	BY	CHK	APPV
A	66	1	16JAN2009	RS	MEH	
A		2	12FEB2009	MEH	GB	

ITEM NO	DESCRIPTION	DATE	BY	CHK	APPV
73					
72					
71	DOCUMENTATION PACKAGE				
70					
69					
68					
67	PLATE, IDENTIFICATION				
66	SCREW, DRIVE				
65					
64					
63	SCR, SET, CUP POINT M6 X 6.0				
62					
61	SCR, SET, FLT POINT M5 X 20.0				
60	SCR, BTN SKT HD CAP (M4 X 10.0)				
59	SCR, HEX HD CAP M4 X 8.0				
58					
57					
56	PAWL, FEED				
55					
54	SCR, BTN SKT HD CAP (M4 X 12.0)				
53	SCR, SKT HD CAP M4 X 12.0				
52	NUT, HEX, REG M3				
51	BUMPER, HOLD DOWN				
50	SPACER, TONKER				
49	SCR, BTN SKT HD CAP (M3 X 10.0)				
48	CAM, UNIVERSAL PRE FEED				
47	CAM, UNIVERSAL POST-FEED				
46	APPLICATOR SUBASSEMBLY, HDI				
45	PLUG, NYLON				
44	RAM				
43					
42					
41	SCR, BTN SKT HD CAP (M8 X 25.0)				
40					
39	SHIM SUB-ASSY				
38	SHIM				
37	FINE ADJUST HEAD ASSEMBLY				
36					
35					
34	SUPPORT, TERMINAL				
33	SCR, BTN SKT HD CAP (M4 X 20.0)				
32	WASHER, FLAT, REG M4				
31	SCR, SKT HD CAP M4 X 12.0				
30	SPACER, STRIP GUIDE				
29	STRIP GUIDE ASSEMBLY				
28	SPACER, CRIMPER				
27	SPRING, COMPRESSION				
26	LEVER, DRAG RELEASE				
25	DRAG, TERMINAL				
24	PLATE, STRIP GUIDE				
23	SCR, SKT HD SHLDR 5.0 DIA X 6.0				
22	STRIPPER				
21	SCR, SKT HD CAP M4 X 10.0				
20	WASHER, SPRG LOCK, REG M4				
19	STRIPPER				
18					
17	SHEAR HOLDER, FRONT				
16					
15					
14					
13					
12	SPRING, COMPRESSION				
11	STOP, SHEAR				
10	SHEAR HOLDER, FRONT, CUT				
9	FLOATING SHEAR, FRONT				
8	ANVIL, COMBINATION				
7					
6					
5	DEPRESSOR, SHEAR				
4	BLOCK, CRIMPER SPACER				
3	CRIMPER, INSUL O				
2	SPACER, CRIMPER				
1	CRIMPER, WIRE				

DIMENSIONS: mm [IN]		TOLERANCES UNLESS OTHERWISE SPECIFIED: 0 PLC ± 1 PLC ± 2 PLC ± 3 PLC ± 4 PLC ± ANGLES ±		DWG: R. SHEN 16JAN2009 CHK: M. HERR 26JAN2009 APVD: W. DEMING 26JAN2009		Tyco Electronics Harrisburg, PA 17105-3608	
MATERIAL:		FINISH:		WEIGHT:		CUSTOMER DRAWING:	
APPLICATION SPEC: See Table		PRODUCT SPEC:		SIZE: A1 CAGE CODE: 00779 DRAWING NO: C-1530030		RESTRICTED TO:	
SCALE: 3:5		SHEET: 1 OF 1		REV: A		NAME: FINE ADJUST SIDE FEED HDI APPLICATOR	