

CIRCUITS	MATERIAL NO.	ENG NO.	DIM. A IN (mm)	DIM. B IN (mm)
2		73902-50-A-C	.97 (24.6)	.438 (11.11)
3		73903-50-A-C	1.40 (35.7)	.875 (22.22)
4	387390623	73904-50-A-C	1.84 (46.8)	1.313 (33.34)
5		73905-50-A-C	2.28 (57.9)	1.750 (44.45)
6		73906-50-A-C	2.72 (69.0)	2.188 (55.56)
7		73907-50-A-C	3.15 (80.01)	2.625 (66.68)
8		73908-50-A-C	3.59 (91.2)	3.063 (78.79)
9		73909-50-A-C	4.03 (102.3)	3.500 (88.90)
10		73910-50-A-C	4.47 (113.5)	3.938 (100.01)
11		73911-50-A-C	4.90 (124.5)	4.375 (111.13)
12		73912-50-A-C	5.34 (135.6)	4.813 (122.24)
13				
14				
15				
16				
17				
18				
19				
20				
21				
22				
23				
24				
25				
26				
27				
28				
29				
30				

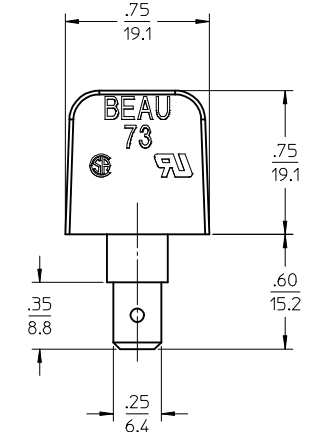
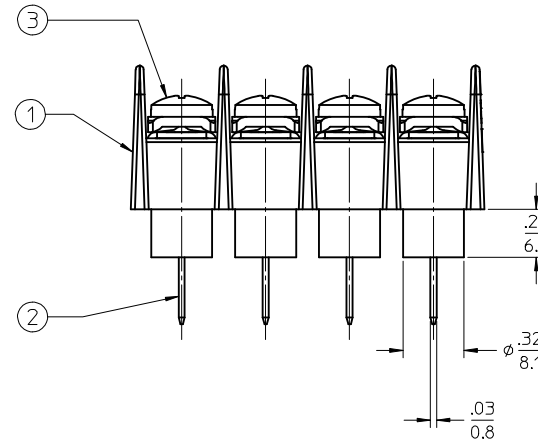
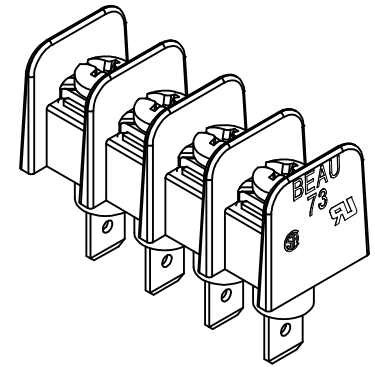
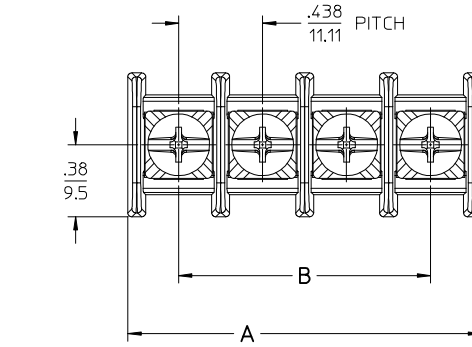
REF. CONTACT FACTORY FOR OPTIONAL LENGTHS

A = B + .53
 B = (N-1) X .438

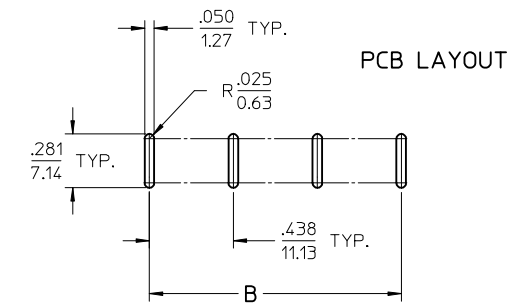
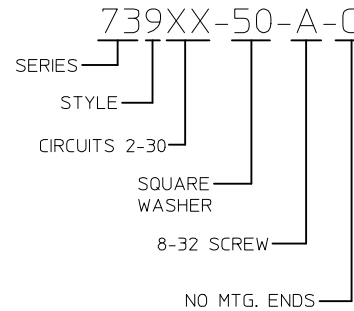
NOTES:

- MATERIAL: SEE TABLE
- FINISHES: SEE TABLE
- PRODUCT SPEC: PS-38730-001
- ELECTRICAL SPECIFICATIONS:
 (UL CSA: CLASS B & C, 10 AWG
 VOLTAGE RATING: 300V
 CURRENT RATING: 30 AMPS
- TIGHTENING TORQUE: 12 IN LBS.
- WIRE STRIP: .31 (7.9mm)
- WIRE RANGE: 10-22 AWG
- ASSEMBLY IS RoHS COMPLIANT
- DIMS SHOWN ARE FOR REFERENCE ONLY
- XX REFERS TO NUMBER OF CIRCUITS

ITEM	QTY.	DESCRIPTION	MATERIAL	FINISH
3	XX	SCREW/WASHER 8-32 X .25 LG	STEEL	ZINC/CL. CHROMATE
2	XX	TERMINAL FAST TAB 8-32	BRASS	TIN PLATED
1	1	SR BTS INSUL XX/C NO MTG ENDS	PBT	BLACK



ENG. NO. LEGEND



RELEASED EC NO: JFG2015-0402 DRAWN BY: DRWINSTONE 2014/09/02 CHECKED BY: CHKDB ARDEN 2014/09/08 APPR: JFMURPHY 2015/04/14	QUALITY SYMBOLS	GENERAL TOLERANCES (UNLESS SPECIFIED)	DIMENSION STYLE IN/MM	SCALE 2:1	DESIGN UNITS INCH	THIRD ANGLE PROJECTION																																																																																												
	$\nabla=0$ $\nabla=0$	<table border="1"> <tr><th></th><th>mm</th><th>INCH</th></tr> <tr><td>4 PLACES</td><td>± .005</td><td>± .0005</td></tr> <tr><td>3 PLACES</td><td>± .010</td><td>± .0010</td></tr> <tr><td>2 PLACES</td><td>± 0.13</td><td>± .01</td></tr> <tr><td>1 PLACE</td><td>± 0.3</td><td>± .01</td></tr> <tr><td>0 PLACE</td><td>± .000</td><td>± .000</td></tr> </table>		mm	INCH	4 PLACES	± .005	± .0005	3 PLACES	± .010	± .0010	2 PLACES	± 0.13	± .01	1 PLACE	± 0.3	± .01	0 PLACE	± .000	± .000	<table border="1"> <tr><th>mm</th><th>INCH</th></tr> <tr><td>± .005</td><td>± .0005</td></tr> <tr><td>± .010</td><td>± .0010</td></tr> <tr><td>± .015</td><td>± .0015</td></tr> <tr><td>± .020</td><td>± .0020</td></tr> <tr><td>± .030</td><td>± .0030</td></tr> <tr><td>± .040</td><td>± .0040</td></tr> <tr><td>± .050</td><td>± .0050</td></tr> <tr><td>± .060</td><td>± .0060</td></tr> <tr><td>± .070</td><td>± .0070</td></tr> <tr><td>± .080</td><td>± .0080</td></tr> <tr><td>± .090</td><td>± .0090</td></tr> <tr><td>± .100</td><td>± .0100</td></tr> <tr><td>± .120</td><td>± .0120</td></tr> <tr><td>± .150</td><td>± .0150</td></tr> <tr><td>± .200</td><td>± .0200</td></tr> <tr><td>± .250</td><td>± .0250</td></tr> <tr><td>± .300</td><td>± .0300</td></tr> <tr><td>± .350</td><td>± .0350</td></tr> <tr><td>± .400</td><td>± .0400</td></tr> <tr><td>± .450</td><td>± .0450</td></tr> <tr><td>± .500</td><td>± .0500</td></tr> <tr><td>± .600</td><td>± .0600</td></tr> <tr><td>± .700</td><td>± .0700</td></tr> <tr><td>± .800</td><td>± .0800</td></tr> <tr><td>± .900</td><td>± .0900</td></tr> <tr><td>± 1.000</td><td>± .1000</td></tr> <tr><td>± 1.200</td><td>± .1200</td></tr> <tr><td>± 1.500</td><td>± .1500</td></tr> <tr><td>± 2.000</td><td>± .2000</td></tr> <tr><td>± 2.500</td><td>± .2500</td></tr> <tr><td>± 3.000</td><td>± .3000</td></tr> <tr><td>± 4.000</td><td>± .4000</td></tr> <tr><td>± 5.000</td><td>± .5000</td></tr> <tr><td>± 6.000</td><td>± .6000</td></tr> <tr><td>± 8.000</td><td>± .8000</td></tr> <tr><td>± 10.000</td><td>± 1.0000</td></tr> </table>	mm	INCH	± .005	± .0005	± .010	± .0010	± .015	± .0015	± .020	± .0020	± .030	± .0030	± .040	± .0040	± .050	± .0050	± .060	± .0060	± .070	± .0070	± .080	± .0080	± .090	± .0090	± .100	± .0100	± .120	± .0120	± .150	± .0150	± .200	± .0200	± .250	± .0250	± .300	± .0300	± .350	± .0350	± .400	± .0400	± .450	± .0450	± .500	± .0500	± .600	± .0600	± .700	± .0700	± .800	± .0800	± .900	± .0900	± 1.000	± .1000	± 1.200	± .1200	± 1.500	± .1500	± 2.000	± .2000	± 2.500	± .2500	± 3.000	± .3000	± 4.000	± .4000	± 5.000	± .5000	± 6.000	± .6000	± 8.000	± .8000	± 10.000	± 1.0000	DRAWN BY: RSTONE DATE: 2014/09/02 CHECKED BY: ARDEN DATE: 2014/09/08 APPROVED BY: JFMURPHY DATE: 2015/04/14	TITLE	SR BTS .438 PITCH STYLE 9, CLAMP WASHER, 8-32 SCREW, NO MTG ENDS
		mm	INCH																																																																																															
	4 PLACES	± .005	± .0005																																																																																															
3 PLACES	± .010	± .0010																																																																																																
2 PLACES	± 0.13	± .01																																																																																																
1 PLACE	± 0.3	± .01																																																																																																
0 PLACE	± .000	± .000																																																																																																
mm	INCH																																																																																																	
± .005	± .0005																																																																																																	
± .010	± .0010																																																																																																	
± .015	± .0015																																																																																																	
± .020	± .0020																																																																																																	
± .030	± .0030																																																																																																	
± .040	± .0040																																																																																																	
± .050	± .0050																																																																																																	
± .060	± .0060																																																																																																	
± .070	± .0070																																																																																																	
± .080	± .0080																																																																																																	
± .090	± .0090																																																																																																	
± .100	± .0100																																																																																																	
± .120	± .0120																																																																																																	
± .150	± .0150																																																																																																	
± .200	± .0200																																																																																																	
± .250	± .0250																																																																																																	
± .300	± .0300																																																																																																	
± .350	± .0350																																																																																																	
± .400	± .0400																																																																																																	
± .450	± .0450																																																																																																	
± .500	± .0500																																																																																																	
± .600	± .0600																																																																																																	
± .700	± .0700																																																																																																	
± .800	± .0800																																																																																																	
± .900	± .0900																																																																																																	
± 1.000	± .1000																																																																																																	
± 1.200	± .1200																																																																																																	
± 1.500	± .1500																																																																																																	
± 2.000	± .2000																																																																																																	
± 2.500	± .2500																																																																																																	
± 3.000	± .3000																																																																																																	
± 4.000	± .4000																																																																																																	
± 5.000	± .5000																																																																																																	
± 6.000	± .6000																																																																																																	
± 8.000	± .8000																																																																																																	
± 10.000	± 1.0000																																																																																																	
A	DESCRIPTION	DRAFT WHERE APPLICABLE MUST REMAIN WITHIN DIMENSIONS	SEE CHART	DOCUMENT NO. SD-38739-028	SHEET NO. 1 OF 1																																																																																													
THIS DRAWING CONTAINS INFORMATION THAT IS PROPRIETARY TO MOLEX INCORPORATED AND SHOULD NOT BE USED WITHOUT WRITTEN PERMISSION																																																																																																		