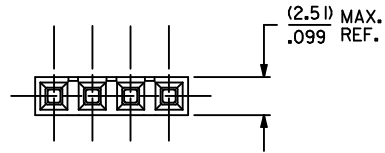
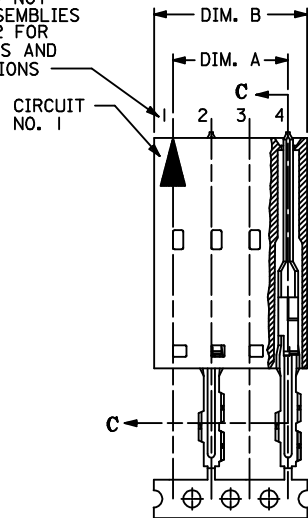


"A" - OPTION



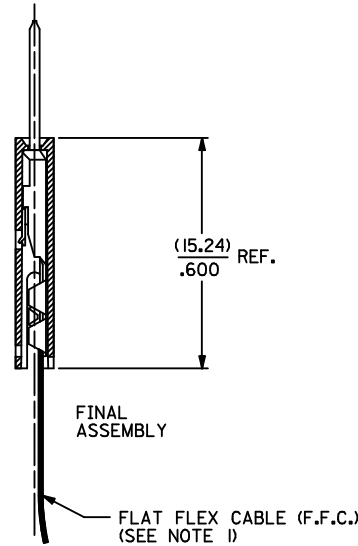
NUMBERS DO NOT APPEAR ON ASSEMBLIES SEE SHEET 2 FOR PART NUMBERS AND VOID LOCATIONS



SECTION C-C



PRE-LOAD ASSEMBLY



FINAL ASSEMBLY

FLAT FLEX CABLE (F.F.C.) (SEE NOTE 1)

NOTES:

- 1) PRE LOADED ASSEMBLY TO BE USED WITH (0.30)/.012 MAXIMUM THICK FLAT FLEX CABLE WITH (1.57)/.062 WIDE COPPER CONDUCTORS ON (2.54)/.100 CENTERS OR, (0.13)/.005 - (0.28)/.011 THICK MYLAR WITH (1.02)/.040 - (1.65)/.065 WIDE SILVER INK CONDUCTORS ON (2.54)/.100 CENTERS.
- 2) STANDARD PACKAGING PER PK-70873-0001 SHALL BE USED.
- 3) SEE CHART FOR CIRCUIT SIZES, "A" AND "B" DIMENSIONS.
- 4) REFER TO PRODUCT SPECIFICATION NO.: PS-70430.
- 5) PARTS STACKABLE SIDE TO SIDE ON (2.54)/.100 CENTERS.

HOUSING MATERIAL: GLASS-FILLED, POLYESTER, 94V-0
 TERMINAL MATERIAL: PHOSPHOR BRONZE
 PLATING:
 .000200 MINIMUM ELECTRO-TIN PLATE
 OVER .000100 MINIMUM COPPER UNDERPLATE OVERALL

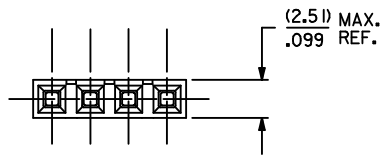
CKT. SIZE	A	B
4	(7.62) .300	(10.13) .399
5	(10.16) .400	(12.67) .499
6	(12.70) .500	(15.21) .599
7	(15.24) .600	(17.75) .699
8	(17.78) .700	(20.29) .799
9	(20.32) .800	(22.83) .899
10	(22.86) .900	(25.37) .999
11	(25.40) 1.000	(27.91) 1.099
12	(27.94) 1.100	(30.45) 1.199
13	(30.48) 1.200	(32.99) 1.299
14	(33.02) 1.300	(35.53) 1.399
15	(35.56) 1.400	(38.07) 1.499
16	(38.10) 1.500	(40.61) 1.599
17	(40.64) 1.600	(43.15) 1.699
18	(43.18) 1.700	(45.69) 1.799
19	(45.72) 1.800	(48.23) 1.899
20	(48.26) 1.900	(50.77) 1.999
21	(50.80) 2.000	(53.31) 2.099
22	(53.34) 2.100	(55.85) 2.199
23	(55.88) 2.200	(58.39) 2.299
24	(58.42) 2.300	(60.93) 2.399
25	(60.96) 2.400	(63.47) 2.499

UPDATE NOTES EC NO: UCP2013-1408 DRWN: TIBARRA 2012/10/10 CHKD: DMORGAN 2012/10/01 APPR: SMILLER 2012/10/25	QUALITY SYMBOLS ▽=0 ▽=0 ▽=0	GENERAL TOLERANCES (UNLESS SPECIFIED)		DIMENSION STYLE MM/IN		SCALE 1:1	DESIGN UNITS INCH	THIRD ANGLE PROJECTION		
		4 PLACES ± --- ± ---	mm	INCH	DRAWN BY	DATE	ASSEMBLY, CONNECTOR F.F.C. MALE SINGLE ROW 2.54/.100 GRID W/ VOIDS molex			
		3 PLACES ± --- ± .010			TIBARRA	2012/10/10				
		2 PLACES ± 0.25 ± .014			CHECKED BY	DATE	DOCUMENT NO. SDA-70456-0001-0048			
1 PLACE ± 0.35 ± ---			DMORGAN	2012/10/10						
0 PLACE ± --- ± ---			APPROVED BY	DATE	SHEET NO. 1 OF 2					
		ANGULAR ±1/2°		SMILLER					2012/10/25	
DRAFT WHERE APPLICABLE MUST REMAIN WITHIN DIMENSIONS		MATERIAL NO. SEE TABLE		THIS DRAWING CONTAINS INFORMATION THAT IS PROPRIETARY TO MOLEX INCORPORATED AND SHOULD NOT BE USED WITHOUT WRITTEN PERMISSION						

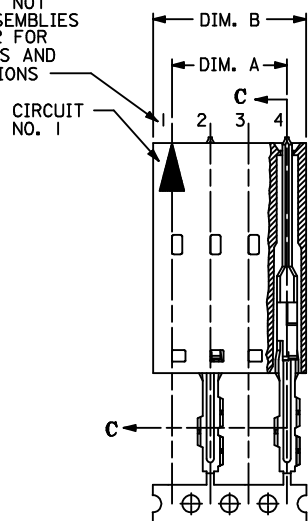
CKT. SIZE	ODD CIRCUIT VOIDS			EVEN CIRCUIT VOIDS		
	EDP NUMBER	ENG NUMBER	VOID LOCATIONS	EDP NUMBER	ENG NUMBER	VOID LOCATIONS
	2	NOT TOOLED	NOT TOOLED	N/A	NOT TOOLED	NOT TOOLED
3	NOT TOOLED	NOT TOOLED	N/A	NOT TOOLED	NOT TOOLED	N/A
4	NOT TOOLED	AX-70456-0003	1,3	NOT TOOLED	AX-70456-0027	2,4
5	015-38-6050	A-70456-0004	1,3,5	NOT TOOLED	AX-70456-0028	2,4
6	NOT TOOLED	AX-70456-0005	1,3,5	NOT TOOLED	AX-70456-0029	2,4,6
7	NOT TOOLED	AX-70456-0006	1,3,5,7	NOT TOOLED	AX-70456-0030	2,4,6
8	NOT TOOLED	AX-70456-0007	1,3,5,7	NOT TOOLED	AX-70456-0031	2,4,6,8
9	NOT TOOLED	AX-70456-0008	1,3,5,7,9	NOT TOOLED	AX-70456-0032	2,4,6,8
10	NOT TOOLED	AX-70456-0009	1,3,5,7,9	NOT TOOLED	AX-70456-0033	2,4,6,8,10
11	NOT TOOLED	AX-70456-0010	1,3,5,7,9,11	NOT TOOLED	AX-70456-0034	2,4,6,8,10
12	NOT TOOLED	AX-70456-0011	1,3,5,7,9,11	NOT TOOLED	AX-70456-0035	2,4,6,8,10,12
13	NOT TOOLED	AX-70456-0012	1,3,5,7,9,11,13	NOT TOOLED	AX-70456-0036	2,4,6,8,10,12
14	NOT TOOLED	AX-70456-0013	1,3,5,7,9,11,13	NOT TOOLED	AX-70456-0037	2,4,6,8,10,12,14
15	NOT TOOLED	AX-70456-0014	1,3,5,7,9,11,13,15	NOT TOOLED	AX-70456-0038	2,4,6,8,10,12,14
16	NOT TOOLED	AX-70456-0015	1,3,5,7,9,11,13,15	NOT TOOLED	AX-70456-0039	2,4,6,8,10,12,14,16
17	NOT TOOLED	AX-70456-0016	1,3,5,7,9,11,13,15,17	NOT TOOLED	AX-70456-0040	2,4,6,8,10,12,14,16
18	NOT TOOLED	AX-70456-0017	1,3,5,7,9,11,13,15,17	NOT TOOLED	AX-70456-0041	2,4,6,8,10,12,14,16,18
19	NOT TOOLED	AX-70456-0018	1,3,5,7,9,11,13,15,17,19	NOT TOOLED	AX-70456-0042	2,4,6,8,10,12,14,16,18
20	NOT TOOLED	AX-70456-0019	1,3,5,7,9,11,13,15,17,19	NOT TOOLED	AX-70456-0043	2,4,6,8,10,12,14,16,18,20
21	NOT TOOLED	AX-70456-0020	1,3,5,7,9,11,13,15,17,19,21	NOT TOOLED	AX-70456-0044	2,4,6,8,10,12,14,16,18,20
22	NOT TOOLED	AX-70456-0021	1,3,5,7,9,11,13,15,17,19,21	NOT TOOLED	AX-70456-0045	2,4,6,8,10,12,14,16,18,20,22
23	NOT TOOLED	AX-70456-0022	1,3,5,7,9,11,13,15,17,19,21,23	NOT TOOLED	AX-70456-0046	2,4,6,8,10,12,14,16,18,20,22
24	NOT TOOLED	AX-70456-0023	1,3,5,7,9,11,13,15,17,19,21,23	NOT TOOLED	AX-70456-0047	2,4,6,8,10,12,14,16,18,20,22,24
25	NOT TOOLED	AX-70456-0024	1,3,5,7,9,11,13,15,17,19,21,23,25	NOT TOOLED	AX-70456-0048	2,4,6,8,10,12,14,16,18,20,22,24

SEE SHEET 1 EC NO: UCP2013-1408 DRWN:TIBARRA 2012/10/10 CHKD:DMORGAN 2012/10/01 APPR:SMILLER 2012/10/25	QUALITY SYMBOLS ▽=0 ▽=0 ▽=0	GENERAL TOLERANCES (UNLESS SPECIFIED)		DIMENSION STYLE MM/IN		SCALE 1:1	DESIGN UNITS INCH	THIRD ANGLE PROJECTION	
								ASSEMBLY, CONNECTOR F.F.C. MALE SINGLE ROW 2.54/.100 GRID W/ VOIDS molex	
		ANGULAR ±1/2°		MATERIAL NO. SEE TABLE		DOCUMENT NO. SDA-70456-0001-0048		SHEET NO. 2 OF 2	
		DRAFT WHERE APPLICABLE MUST REMAIN WITHIN DIMENSIONS		THIS DRAWING CONTAINS INFORMATION THAT IS PROPRIETARY TO MOLEX INCORPORATED AND SHOULD NOT BE USED WITHOUT WRITTEN PERMISSION					

"A" - OPTION



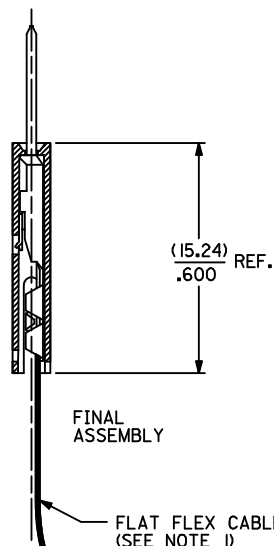
NUMBERS DO NOT APPEAR ON ASSEMBLIES SEE SHEET 2 FOR PART NUMBERS AND VOID LOCATIONS



SECTION C-C



PRE-LOAD ASSEMBLY



FINAL ASSEMBLY

FLAT FLEX CABLE (F.F.C.) (SEE NOTE 1)

NOTES:

- 1) PRE LOADED ASSEMBLY TO BE USED WITH (0.30)/.012 MAXIMUM THICK FLAT FLEX CABLE WITH (1.57)/.062 WIDE COPPER CONDUCTORS ON (2.54)/.100 CENTERS OR, (0.13)/.005 - (0.28)/.011 THICK MYLAR WITH (1.02)/.040 - (1.65)/.065 WIDE SILVER INK CONDUCTORS ON (2.54)/.100 CENTERS.
- 2) STANDARD PACKAGING PER PK-70873-0001 SHALL BE USED.
- 3) SEE CHART FOR CIRCUIT SIZES, "A" AND "B" DIMENSIONS.
- 4) REFER TO PRODUCT SPECIFICATION NO.: PS-70430.
- 5) PARTS STACKABLE SIDE TO SIDE ON (2.54)/.100 CENTERS.

CKT. SIZE	DIMENSIONS	
	A	B
4	(7.62) 300	(10.13) 399
5	(10.16) 400	(12.67) 499
6	(12.70) 500	(15.21) 599
7	(15.24) 600	(17.75) 699
8	(17.78) 700	(20.29) 799
9	(20.32) 800	(22.83) 899
10	(22.86) 900	(25.37) 999
11	(25.40) 1,000	(27.91) 1,099
12	(27.94) 1,100	(30.45) 1,199
13	(30.48) 1,200	(32.99) 1,299
14	(33.02) 1,300	(35.53) 1,399
15	(35.56) 1,400	(38.07) 1,499
16	(38.10) 1,500	(40.61) 1,599
17	(40.64) 1,600	(43.15) 1,699
18	(43.18) 1,700	(45.69) 1,799
19	(45.72) 1,800	(48.23) 1,899
20	(48.26) 1,900	(50.77) 1,999
21	(50.80) 2,000	(53.31) 2,099
22	(53.34) 2,100	(55.85) 2,199
23	(55.88) 2,200	(58.39) 2,299
24	(58.42) 2,300	(60.93) 2,399
25	(60.96) 2,400	(63.47) 2,499

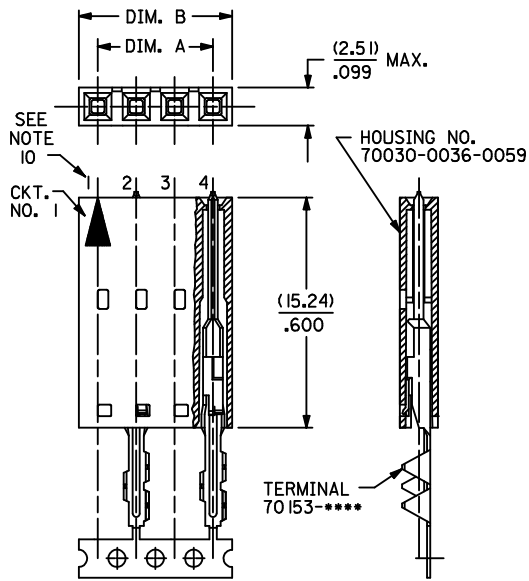
HOUSING MATERIAL: GLASS-FILLED, POLYESTER, 94V-0
 TERMINAL MATERIAL: PHOSPHOR BRONZE
 PLATING:
 .000015 MINIMUM GOLD PLATE IN SELECT AREA
 .000075 MINIMUM TIN PLATE IN SELECT AREA
 BOTH OVER NICKEL UNDERPLATE OVERALL

UPDT NOTES EC NO: UCP2013-1408 DRWNG: IBARRA 2012/10/10 CHKD: DMORGAN 2012/10/10 APPR: SMILLER 2012/10/25	QUALITY SYMBOLS ∇=0 ∇=0 ∇=0	GENERAL TOLERANCES (UNLESS SPECIFIED)		DIMENSION STYLE MM/IN		SCALE 1:1	DESIGN UNITS INCH	THIRD ANGLE PROJECTION
		4 PLACES ± --- ± ---	mm	INCH	DRAWN BY	DATE	ASSEMBLY, CONNECTOR F.F.C. MALE SINGLE ROW 2.54/.100 GRID W/ VOIDS molex	
		3 PLACES ± --- ± .010			CHECKED BY	DATE		
		2 PLACES ± 0.25 ± .014			DMORGAN	2012/10/10		
1 PLACE ± 0.35 ± ---			APPROVED BY	DATE				
0 PLACE ± --- ± ---			SMILLER	2012/10/25	MATERIAL NO. SEE TABLE		DOCUMENT NO. SDA-70456-0241-0288	SHEET NO. 1 OF 2
DRAFT WHERE APPLICABLE MUST REMAIN WITHIN DIMENSIONS				ANGULAR ±1/2°		THIS DRAWING CONTAINS INFORMATION THAT IS PROPRIETARY TO MOLEX INCORPORATED AND SHOULD NOT BE USED WITHOUT WRITTEN PERMISSION		

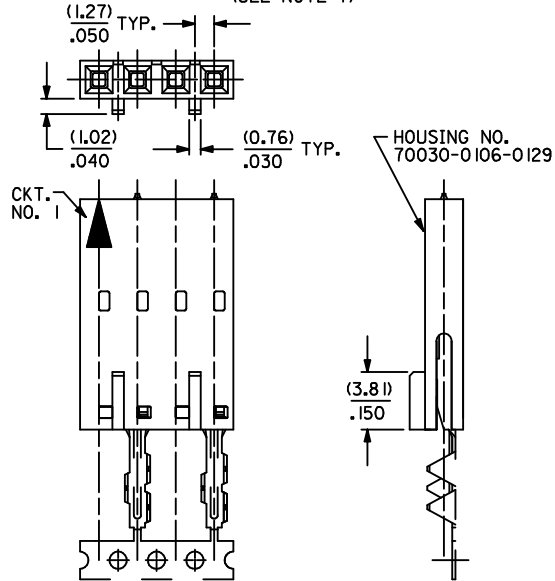
CKT. SIZE	ODD CIRCUIT VOIDS			EVEN CIRCUIT VOIDS		
	EDP NUMBER	ENG NUMBER	VOID LOCATIONS	EDP NUMBER	ENG NUMBER	VOID LOCATIONS
	2	NOT TOOLED	NOT TOOLED	N/A	NOT TOOLED	NOT TOOLED
3	NOT TOOLED	NOT TOOLED	N/A	NOT TOOLED	NOT TOOLED	N/A
4	NOT TOOLED	AX-70456-0243	1,3	NOT TOOLED	AX-70456-0267	2,4
5	015-38-6051	A-70456-0244	1,3,5	NOT TOOLED	AX-70456-0268	2,4
6	NOT TOOLED	AX-70456-0245	1,3,5	NOT TOOLED	AX-70456-0269	2,4,6
7	NOT TOOLED	AX-70456-0246	1,3,5,7	NOT TOOLED	AX-70456-0270	2,4,6
8	NOT TOOLED	AX-70456-0247	1,3,5,7	NOT TOOLED	AX-70456-0271	2,4,6,8
9	NOT TOOLED	AX-70456-0248	1,3,5,7,9	NOT TOOLED	AX-70456-0272	2,4,6,8
10	NOT TOOLED	AX-70456-0249	1,3,5,7,9	NOT TOOLED	AX-70456-0273	2,4,6,8,10
11	NOT TOOLED	AX-70456-0250	1,3,5,7,9,11	NOT TOOLED	AX-70456-0274	2,4,6,8,10
12	NOT TOOLED	AX-70456-0251	1,3,5,7,9,11	NOT TOOLED	AX-70456-0275	2,4,6,8,10,12
13	NOT TOOLED	AX-70456-0252	1,3,5,7,9,11,13	NOT TOOLED	AX-70456-0276	2,4,6,8,10,12
14	NOT TOOLED	AX-70456-0253	1,3,5,7,9,11,13	NOT TOOLED	AX-70456-0277	2,4,6,8,10,12,14
15	NOT TOOLED	AX-70456-0254	1,3,5,7,9,11,13,15	NOT TOOLED	AX-70456-0278	2,4,6,8,10,12,14
16	NOT TOOLED	AX-70456-0255	1,3,5,7,9,11,13,15	NOT TOOLED	AX-70456-0279	2,4,6,8,10,12,14,16
17	NOT TOOLED	AX-70456-0256	1,3,5,7,9,11,13,15,17	NOT TOOLED	AX-70456-0280	2,4,6,8,10,12,14,16
18	NOT TOOLED	AX-70456-0257	1,3,5,7,9,11,13,15,17	NOT TOOLED	AX-70456-0281	2,4,6,8,10,12,14,16,18
19	NOT TOOLED	AX-70456-0258	1,3,5,7,9,11,13,15,17,19	NOT TOOLED	AX-70456-0282	2,4,6,8,10,12,14,16,18
20	NOT TOOLED	AX-70456-0259	1,3,5,7,9,11,13,15,17,19	NOT TOOLED	AX-70456-0283	2,4,6,8,10,12,14,16,18,20
21	NOT TOOLED	AX-70456-0260	1,3,5,7,9,11,13,15,17,19,21	NOT TOOLED	AX-70456-0284	2,4,6,8,10,12,14,16,18,20
22	NOT TOOLED	AX-70456-0261	1,3,5,7,9,11,13,15,17,19,21	NOT TOOLED	AX-70456-0285	2,4,6,8,10,12,14,16,18,20,22
23	NOT TOOLED	AX-70456-0262	1,3,5,7,9,11,13,15,17,19,21,23	NOT TOOLED	AX-70456-0286	2,4,6,8,10,12,14,16,18,20,22
24	NOT TOOLED	AX-70456-0263	1,3,5,7,9,11,13,15,17,19,21,23	NOT TOOLED	AX-70456-0287	2,4,6,8,10,12,14,16,18,20,22,24
25	NOT TOOLED	AX-70456-0264	1,3,5,7,9,11,13,15,17,19,21,23,25	NOT TOOLED	AX-70456-0288	2,4,6,8,10,12,14,16,18,20,22,24

SEE SHEET 1 EC NO: UCP2013-1408 DRWN: TIBARRA 2012/10/10 CHKD: DMORGAN 2012/10/10 APPR: SMILLER 2012/10/25	QUALITY SYMBOLS 	GENERAL TOLERANCES (UNLESS SPECIFIED)		DIMENSION STYLE	SCALE	DESIGN UNITS	THIRD ANGLE PROJECTION	
				MM/IN	1:1	INCH		
		4 PLACES	± .005	± .005	DRAWN BY	DATE	ASSEMBLY, CONNECTOR F.F.C. MALE SINGLE ROW 2.54/.100 GRID W/ VOIDS 	
		3 PLACES	± .005	± .010	CHECKED BY	DATE		
2 PLACES	± 0.25	± .014	DMORGAN	2012/10/10				
1 PLACE	± 0.35	± .014	APPROVED BY	DATE				
0 PLACE	± .005	± .014	SMILLER	2012/10/25	DOCUMENT NO.			
ANGULAR ±1/2°			MATERIAL NO.		SDA-70456-0241-0288		SHEET NO.	
DRAFT WHERE APPLICABLE MUST REMAIN WITHIN DIMENSIONS			SEE TABLE		2 OF 2			
			THIS DRAWING CONTAINS INFORMATION THAT IS PROPRIETARY TO MOLEX. INCORPORATED AND SHOULD NOT BE USED WITHOUT WRITTEN PERMISSION					

OPTION -A-



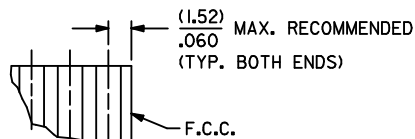
OPTION -D-
(SEE NOTE 7)



CKT. SIZE	A	B
4	(7.62) / .300	(10.13) / .399
5	(10.16) / .400	(12.67) / .499
6	(12.70) / .500	(15.21) / .599
7	(15.24) / .600	(17.75) / .699
8	(17.78) / .700	(20.29) / .799
9	(20.32) / .800	(22.83) / .899
10	(22.86) / .900	(25.37) / .999
11	(25.40) / 1.000	(27.91) / 1.099
12	(27.94) / 1.100	(30.45) / 1.199
13	(30.48) / 1.200	(32.99) / 1.299
14	(33.02) / 1.300	(35.53) / 1.399
15	(35.56) / 1.400	(38.07) / 1.499
16	(38.10) / 1.500	(40.61) / 1.599
17	(40.64) / 1.600	(43.15) / 1.699
18	(43.18) / 1.700	(45.69) / 1.799
19	(45.72) / 1.800	(48.23) / 1.899
20	(48.26) / 1.900	(50.77) / 1.999
21	(50.80) / 2.000	(53.31) / 2.099
22	(53.34) / 2.100	(55.85) / 2.199
23	(55.88) / 2.200	(58.39) / 2.299
24	(58.42) / 2.300	(60.93) / 2.399
25	(60.96) / 2.400	(63.47) / 2.499

NOTES:

- 1) SEE TABLE FOR CIRCUIT SIZES.
- 2) TERMINALS ARE SHOWN PRE-LOADED INTO HOUSING AND LOCKED INTO FIRST ROW.
- 3) STANDARD PACKAGING PER PK-70873-0001 SHALL BE USED.
- 4) ALL DIMENSIONS ARE FOR REFERENCE ONLY.
- 5) SEE SHEET 2 OF FAMILY DRAWING FOR PART NO'S. AND PLATINGS.
- 6) PRE LOADED ASSEMBLY TO BE USED WITH (0.30) / .012 MAXIMUM THICK FLAT FLEX CABLE WITH (1.57) / .062 WIDE COPPER CONDUCTORS ON (2.54) / .100 CENTERS OR, (0.13) / .005 - (0.28) / .011 THICK MYLAR WITH (1.02) / .040 - (1.65) / .065 WIDE SILVER INK CONDUCTORS ON (2.54) / .100 CENTERS.
- 7) RECOMMENDED F.F.C. CONFIGURATION FOR OPTION "D" ONLY; WHEN USED WITH INTERIM CLIPS. SEE DETAIL 1.
- 8) SEE SHEET 2 FOR CORE-OUT CONFIGURATION.
- 9) REFER TO PRODUCT SPECIFICATION NO.: PS-70430.
- 10) NUMBERS DO NOT APPEAR ON ASSEMBLIES.



DETAIL - 1
(SEE NOTE 7)

UPDATE NOTES EC NO: UCP2013-1408 DRWNG: IBARRA 2012/10/10 CHKD: DMORGAN 2012/10/10 APPR: SMILLER 2012/10/25	QUALITY SYMBOLS ▽=0 ▽=0 ▽=0	GENERAL TOLERANCES (UNLESS SPECIFIED)		DIMENSION STYLE MM/IN		SCALE 1:1	DESIGN UNITS INCH	THIRD ANGLE PROJECTION			
		4 PLACES ± --- ± ---	3 PLACES ± --- ± ---	2 PLACES ± --- ± ---	1 PLACE ± --- ± ---	0 PLACE ± --- ± ---	DRAWN BY DATE TIBARRA 2012/10/10		ASSEMBLY, CONNECTOR F.F.C. MALE SINGLE ROW 2.54/.100 GRID W/ VOIDS molex DOCUMENT NO. SDA-70456-**** SHEET NO. 1 OF 2		
		CHECKED BY DATE DMORGAN 2012/10/10					APPROVED BY DATE SMILLER 2012/10/25				
		MATERIAL NO.					SEE TABLE				
ANGULAR ±1/2°					DRAFT WHERE APPLICABLE MUST REMAIN WITHIN DIMENSIONS						
THIS DRAWING CONTAINS INFORMATION THAT IS PROPRIETARY TO MOLEX INCORPORATED AND SHOULD NOT BE USED WITHOUT WRITTEN PERMISSION											

