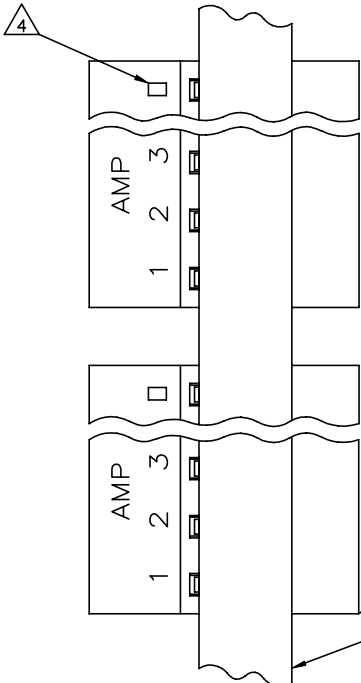
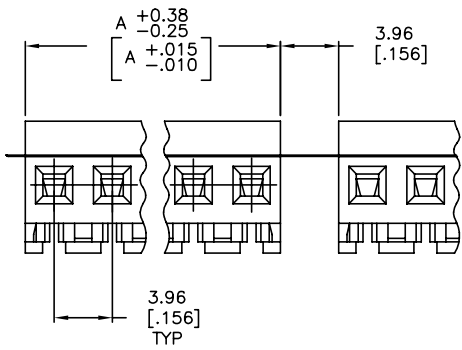
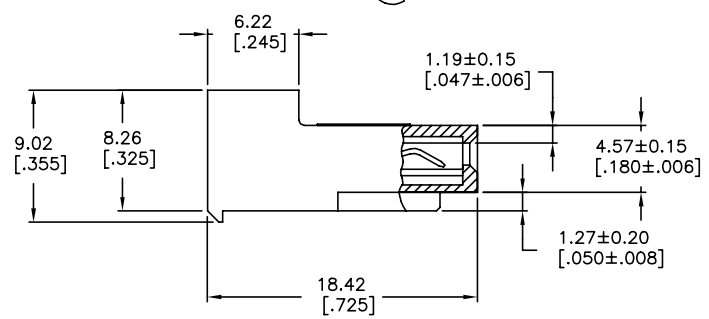


THIS DRAWING IS UNPUBLISHED. RELEASED FOR PUBLICATION
 © COPYRIGHT - TE Connectivity Ltd. ALL RIGHTS RESERVED.

REVISIONS					
P	LTR	DESCRIPTION	DATE	DMN	APVD
S		REVISED PER ECR-20-000824	29MAY2020	PC	SW



7 OBSOLETE PARTS: OBSOLETE CIS STREAMLINING PER D.RENAUD/D.SINISI
 8 OBSOLETE PARTS



1 MATERIAL: CONNECTOR - NYLON UL94V-2 (WHITE).
 CONTACTS - 0.30[.012] THICK COPPER ALLOY
 BRIGHT TIN-LEAD 0.00203[.000080] MIN THICK
 FOR CONTACTS 640480-2 THRU 2-640480-4
 MATTE WHISKER MITIGATED TIN 0.00203[.000080]
 MIN THICKNESS OVER NICKEL UNDERPLATE FOR
 3-640480-2 THRU 5-640480-4

- 2. CONTACTS ACCEPT 24 AWG WIRE WITH 2.41[.095] MAX INSULATION DIAMETER.
- 3. CONTACTS MUST ACCEPT 1.14±0.03[.045±.001] SQUARE POST AND REMAIN LOCKED IN POSITION.
- 4 IDENTIFICATION NUMBER FOR LAST CIRCUIT MAY NOT APPEAR ON ALL ASSEMBLIES.
- 5. DIMENSIONS IN BRACKETS ARE IN INCHES.
- 6. HOUSING FEATURES ARE: CLOSED END WITHOUT LOCKING RAMP.

8 SUPERSEDED
 SUPERSEDED
 7

95.10	[3.744]	24	5-640480-4
91.13	[3.588]	23	5-640480-3
87.17	[3.432]	22	5-640480-2
83.21	[3.276]	21	5-640480-1
79.25	[3.120]	20	5-640480-0
75.29	[2.964]	19	4-640480-9
71.32	[2.808]	18	4-640480-8
67.36	[2.652]	17	4-640480-7
63.40	[2.496]	16	4-640480-6
59.44	[2.340]	15	4-640480-5
55.47	[2.184]	14	4-640480-4
51.51	[2.028]	13	4-640480-3
47.55	[1.872]	12	4-640480-2
43.59	[1.716]	11	4-640480-1
39.62	[1.560]	10	4-640480-0
35.66	[1.404]	9	3-640480-9
31.70	[1.248]	8	3-640480-8
27.74	[1.092]	7	3-640480-7
23.77	[.936]	6	3-640480-6
19.81	[.780]	5	3-640480-5
15.85	[.624]	4	3-640480-4
11.89	[.468]	3	3-640480-3
7.92	[.312]	2	3-640480-2
95.10	[3.744]	24	2-640480-4
91.13	[3.588]	23	2-640480-3
87.17	[3.432]	22	2-640480-2
83.21	[3.276]	21	2-640480-1
79.25	[3.120]	20	2-640480-0
75.29	[2.964]	19	1-640480-9
71.32	[2.808]	18	1-640480-8
67.36	[2.652]	17	1-640480-7
63.40	[2.496]	16	1-640480-6
59.44	[2.340]	15	1-640480-5
55.47	[2.184]	14	1-640480-4
51.51	[2.028]	13	1-640480-3
47.55	[1.872]	12	1-640480-2
43.59	[1.716]	11	1-640480-1
39.62	[1.560]	10	1-640480-0
35.66	[1.404]	9	640480-9
31.70	[1.248]	8	640480-8
27.74	[1.092]	7	640480-7
23.77	[.936]	6	640480-6
19.81	[.780]	5	640480-5
15.85	[.624]	4	640480-4
11.89	[.468]	3	640480-3
7.92	[.312]	2	640480-2

DIM A	NO. OF CIRCUITS	PART NO

THIS DRAWING IS A CONTROLLED DOCUMENT.		DMN R. VESTAL 15 SEP 95
DIMENSIONS: mm [INCHES]		CHK R. SWING 15 SEP 95
TOLERANCES UNLESS OTHERWISE SPECIFIED:		APVD D. CLARK 15 SEP 95
0 PLC ± -	1 PLC ± -	NAME
2 PLC ± -	3 PLC ± -	PRODUCT SPEC
4 PLC ± -	5 PLC ± -	108-1051
ANGLES ± -	FINISH ± -	APPLICATION SPEC
MATERIAL 1	FINISH 1	SIZE CAGE CODE DRAWING NO RESTRICTED TO
		A2 00779 C=640480
CUSTOMER DRAWING		SCALE 4:1 SHEET 1 of 1 REV S

TE TE Connectivity Ltd.
 MTA-156 CONNECTOR ASSEMBLY,
 24 AWG, STANDARD
 TAPE MOUNTED