

4

3

2

1

THIS DRAWING IS UNPUBLISHED.
VERTRAULICHE UNVERÖFFENTLICHTE ZEICHNUNG

RELEASED FOR PUBLICATION
FREI FUER VERÖFFENTLICHUNG

MATED WITH:
PASSEND ZU:
1110949

LOC
AI

DIST

REVISIONS
ÄNDERUNGEN

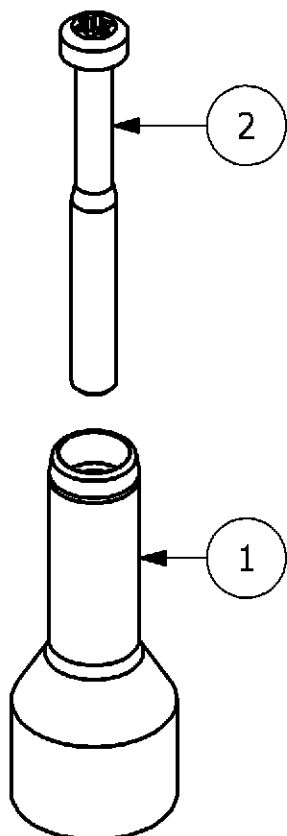
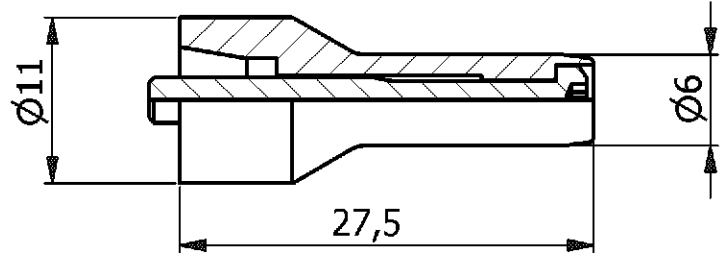
© COPYRIGHT 2000 BY AMP INCORPORATED.

ALL RIGHTS RESERVED.
ALLE RECHTE VORBEHALTEN

PROJEKT NR.:
B901815

P LTR DESCRIPTION BESCHREIBUNG
C3 REVISED BY ECR-07-016077

DATE DWN APVD
04.07.2007 GW BR



0-1 as shown

NOTES

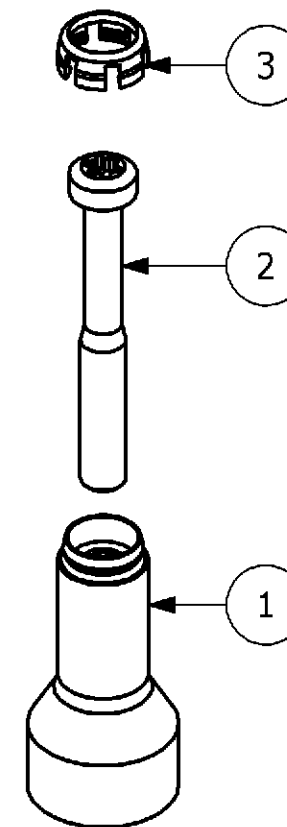
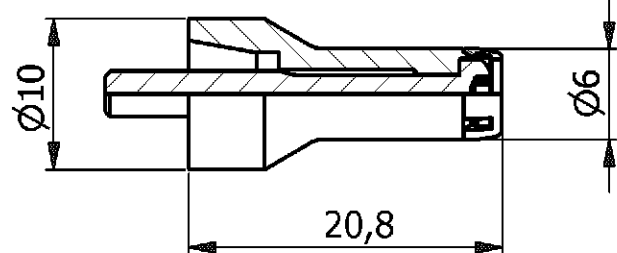
- 1 SUITABLE CRIMP BARRELS: SERIES HF.06/08
CUSTOMER DRAWING: 1110952, 1108807
- 2 SUITABLE INSERTS: SERIES MDL; MDL2
CUSTOMER DRAWING: 1103024, 1104560, 1110957
- 3 STANDARDS:
DIN EN 61984; DIN EN 60664-1
- 4 PACKAGING:
10 SETS IN A CARTON, PRE-MOUNTED

| QTY. | DESCRIPTION | MATERIAL | SURFACE | COLOR | NOTE | ITEM |
|------|-------------|--------------|---------------|-------|--------------------|------|
| 1 | PIN CONTACT | BRASS | SILVER PLATED | --- | LONG VERSION | 1 |
| 1 | SCREW | STAINL.STEEL | --- | --- | M3X27, SELFLOCKING | 2 |

PN: 0-1 / Ordering Text: HF-06-Sti

NOTES

- 1 SUITABLE CRIMP BARRELS: SERIES HF.06/08
CUSTOMER DRAWING NO.: 1110952, 1108807
- 2 SUITABLE INSERTS: SERIES HVS; HC.20
CUSTOMER DRAWING: 1103243, 1245442
- 3 STANDARDS:
DIN EN 61984; DIN EN 60664-1
- 4 PACKAGING:
10 SETS IN A CARTON, PRE-MOUNTED



0-2 as shown

| QTY. | DESCRIPTION | MATERIAL | SURFACE | COLOR | NOTE | ITEM |
|------|-----------------|--------------|---------------|-------|----------------------|------|
| 1 | IP20-PROTECTION | PA6.6-GF25 | NATURAL | BLACK | FOR PIN CONTACT | 3 |
| 1 | SCREW | STAINL.STEEL | --- | --- | M3X23,5, SELFLOCKING | 2 |
| 1 | PIN CONTACT | BRASS | SILVER PLATED | --- | SHORT VERSION | 1 |

PN: 0-2 / Ordering Text: HF-06-Sti-IP20

| | | | |
|---|--|---|--|
| <small>THIS DRAWING IS A CONTROLLED DOCUMENT FOR AMP INCORPORATED. IT IS SUBJECT TO CHANGE AND THE CONTROLLING ENGINEERING ORGANIZATION SHOULD BE CONTACTED FOR THE LATEST REVISION. DIESES ZEICHNUNGSDOKUMENT WIRD DURCH AMP INCORPORATED KONTROLLIERT. ÄNDERUNGEN, DIE DEM TECHNISCHEN FORTSCHRITT DIENEN, SIND VORBEHALTEN. DEN JEWELN LETZTLIEGENDEN ÄNDERUNGSSTAND ERFAHREN SIE AUF ANFRAGE.</small> | | DWN 09.08.2005 G.WROBLEWSKI | Tyco / Electronics AMP GmbH D - 53819 Neunkirchen |
| DIMENSIONS: DIMENSIONEN: mm | | CHK 09.08.2005 H.BRAUN | |
| | | APVD 09.08.2005 T.SCHNURPFEIL | NAME ASS'Y PIN CONTACT SERIES HF6 |
| TOLERANCES UNLESS OTHERWISE SPECIFIED: ALLGEMEINTOLERANZEN n. ISO 8015 n. ISO 2768 - mH -E n. DIN 16901 - 140 | | PRODUCT SPEC PRODUKTSPEZ. 108-74024 | SIZE A3 |
| MATERIAL | | APPLICATION SPEC VERARBEITUNGSSPEZ. 114-74031 | CAGE CODE 00779 |
| FINISH / OBERFLÄCHE / FARBE | | WEIGHT GEWICHT | DRAWING NO ZEICHNUNGS-NR. 1110948 |
| | | CUSTOMER DRAWING / KUNDENZEICHNUNG | |
| | | SCALE MASSSTAB 2:1 | RESTRICTED TO NUR FUER - |
| | | SHEET BLATT 1 | OF VON 1 |
| | | REV C3 | |