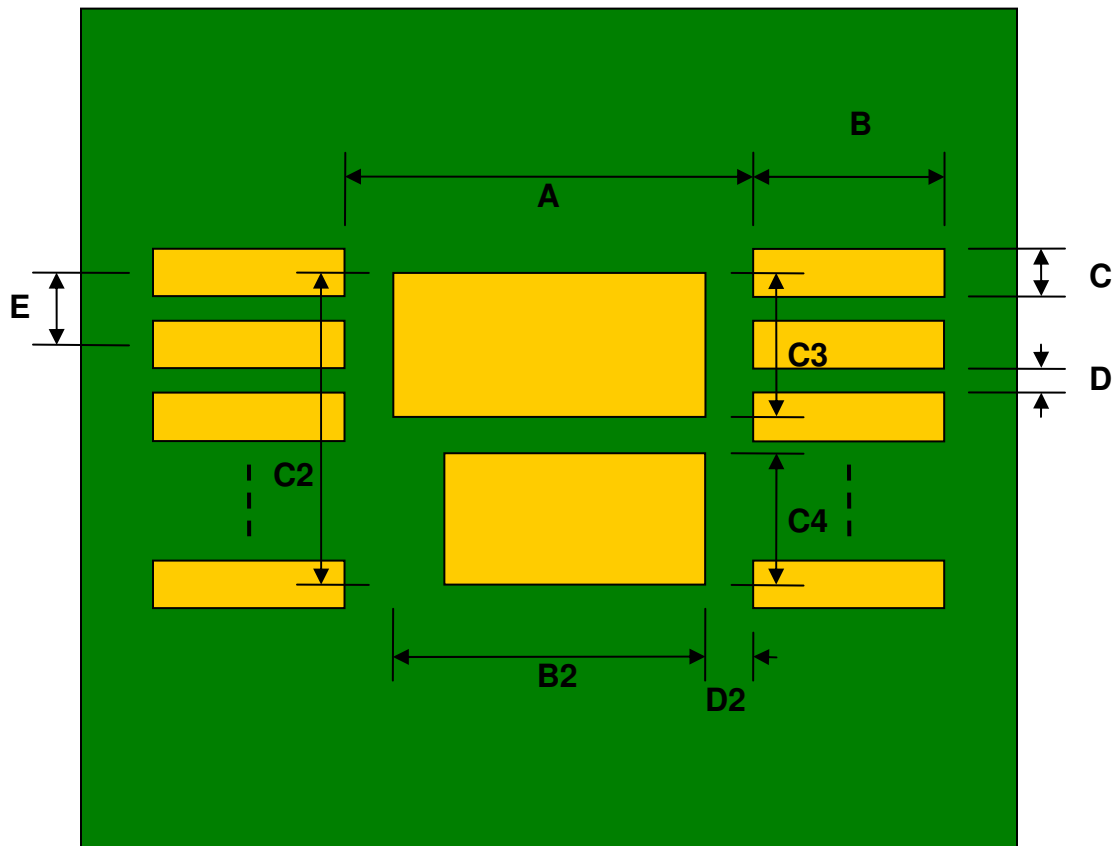


SON-6 to DIP-10 SMT Adapter (0.65 mm pitch, 2 x 2 mm body)

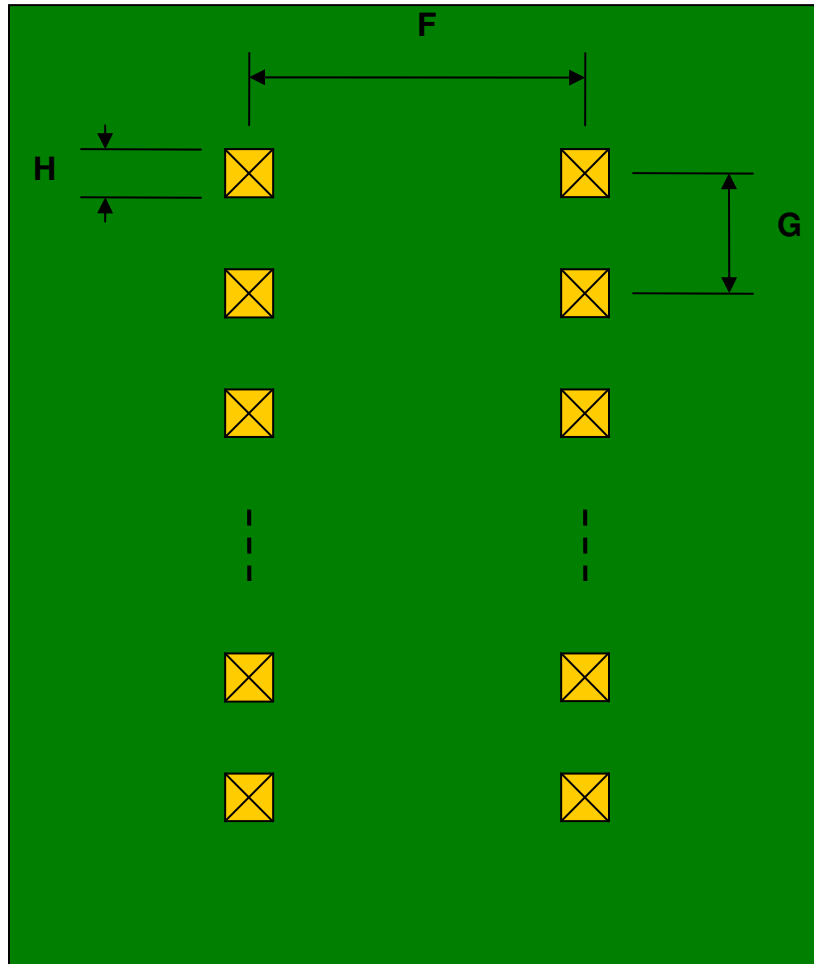
REF.	DIMENSIONS					
	mm			inches		
	MIN.	TYP.	MAX.	MIN.	TYP.	MAX.
A		1.45				
B		0.46				
C		0.40				
B2		1.05				
C2		1.70				
C3		1.05				
C4		0.40				
D		0.25				
D2		0.20				
E		0.65				
F					0.600	
G					0.100	
H					0.025	

Top View (SMT Footprint)



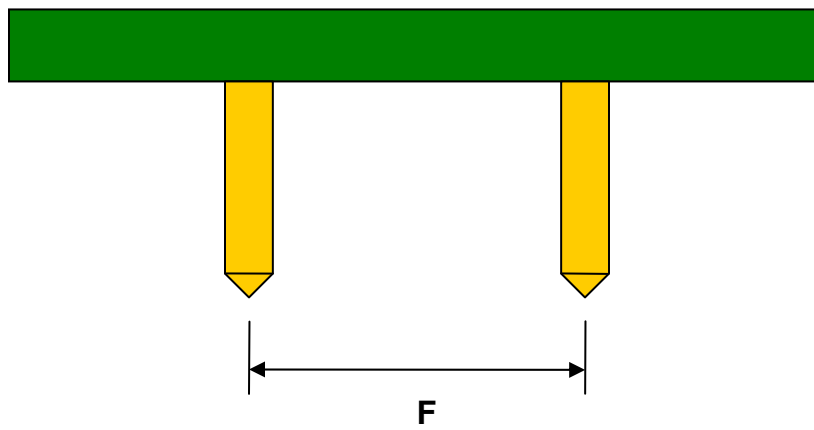
(Representative drawing only - not to scale)

Bottom View (DIP Pins)



(Representative drawing only - not to scale)

Side View (DIP Pins)



(Representative drawing only - not to scale)