

SURI-RS

~6° real spot beam. Assembly with holder and installation tape.

SPECIFICATION:

Dimensions	Ø 37.8 mm
Height	24 mm
Fastening	tape, pin
ROHS compliant	yes ⓘ

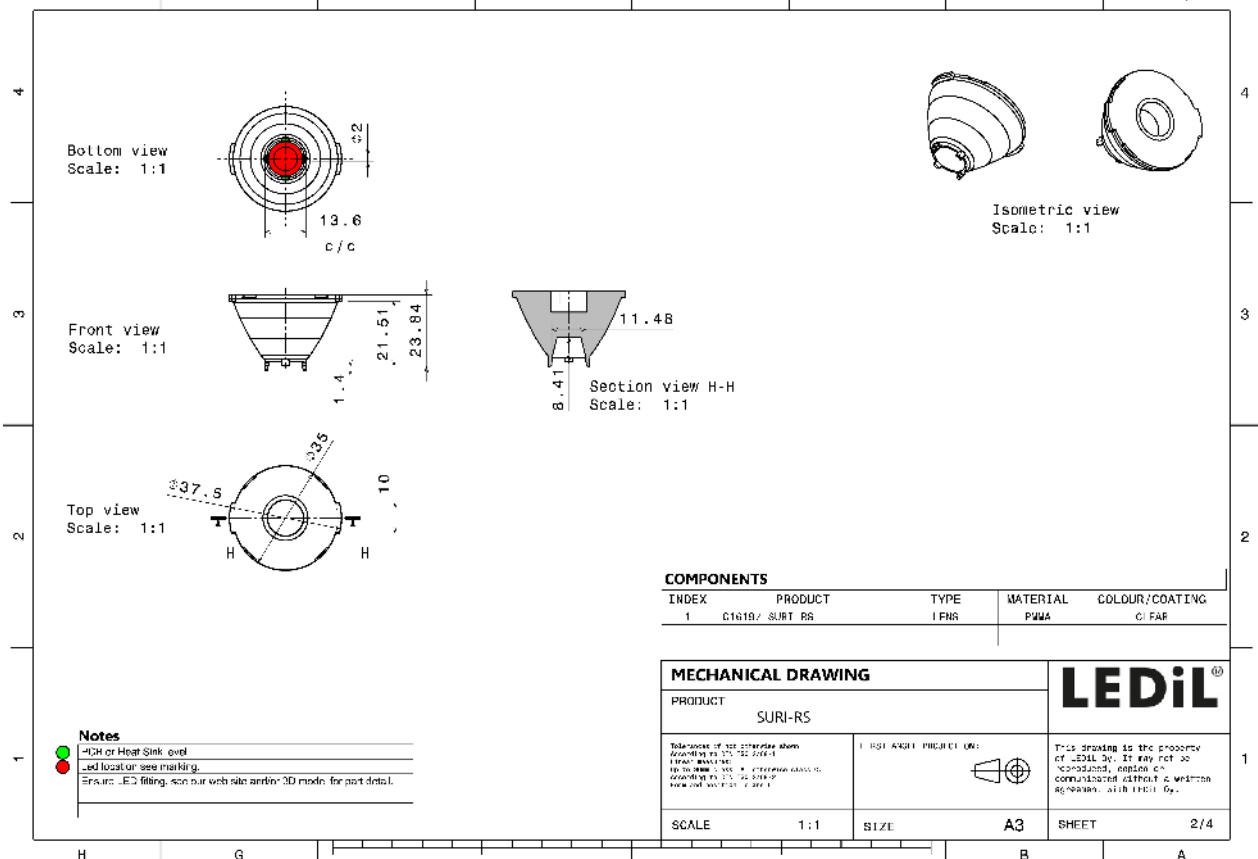
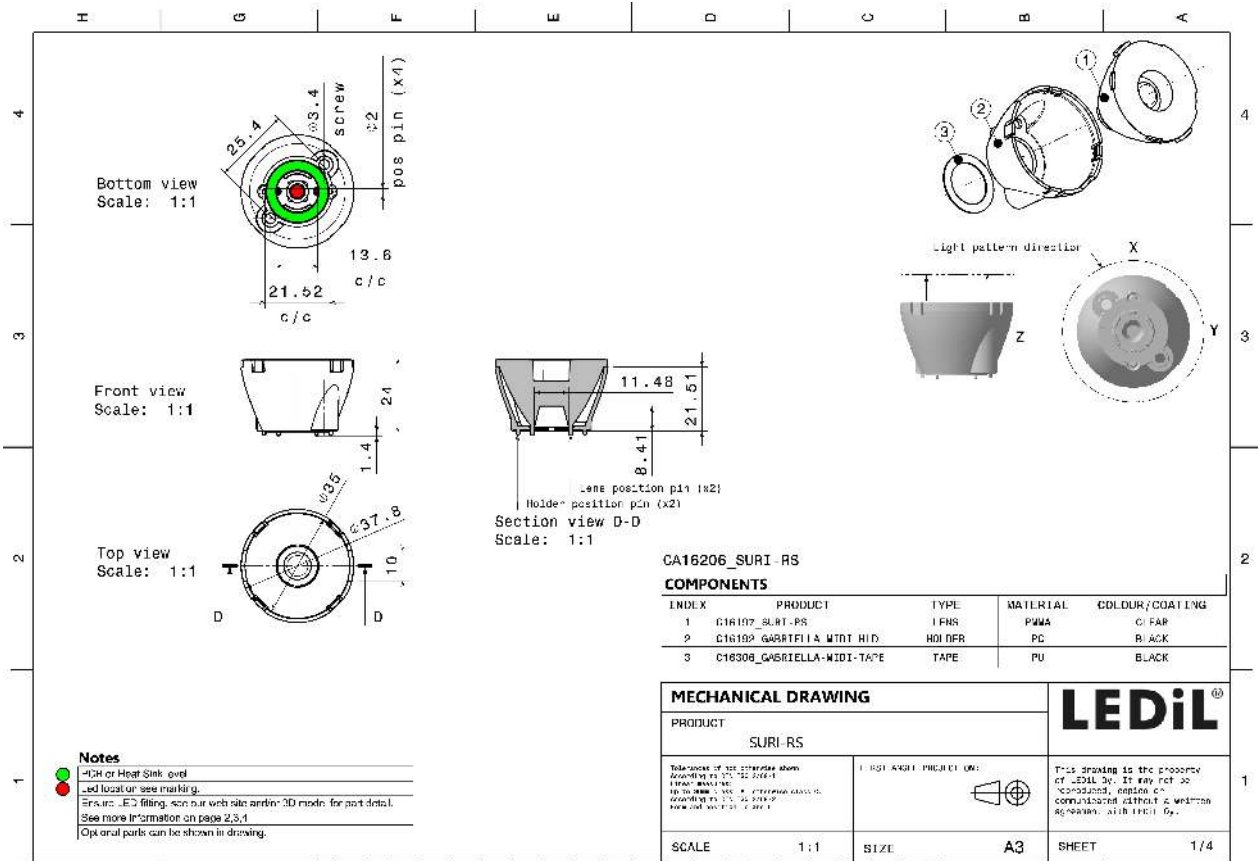
MATERIALS:

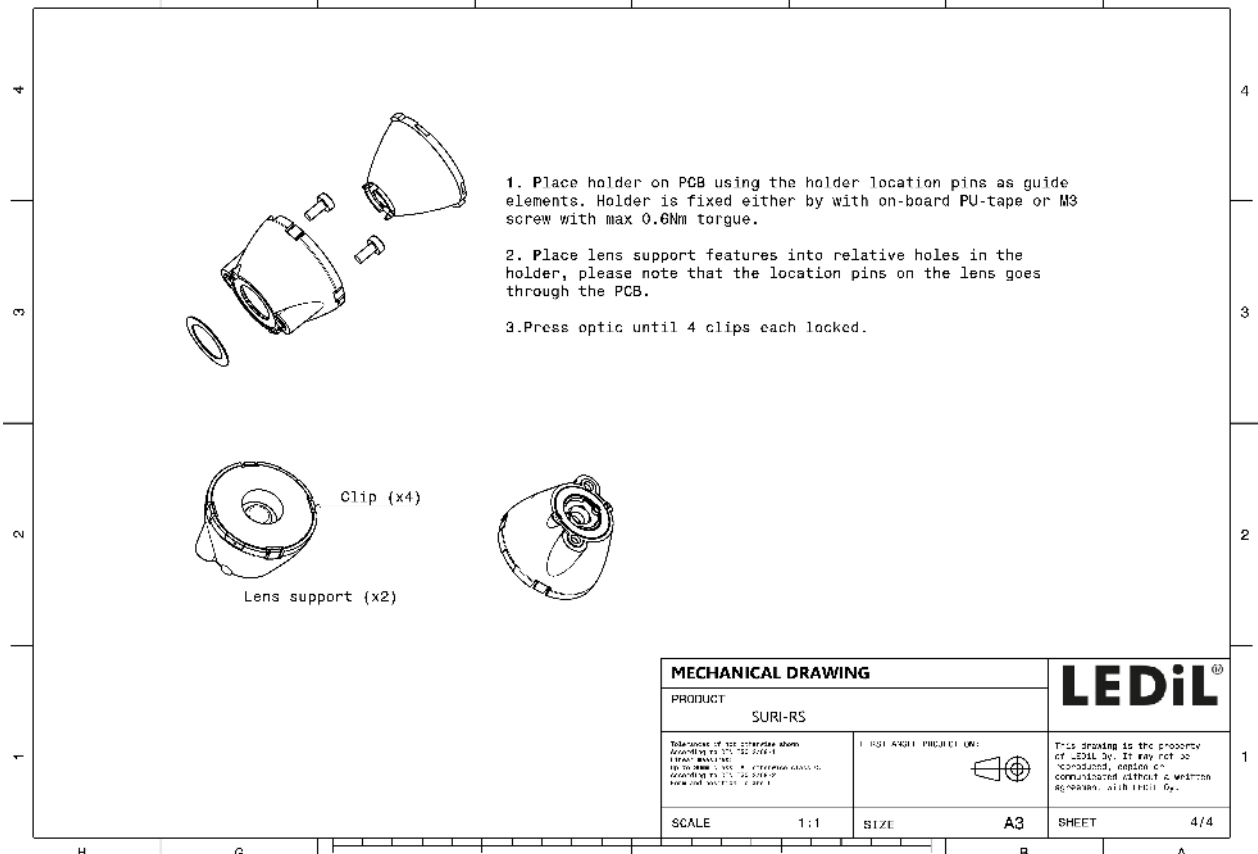
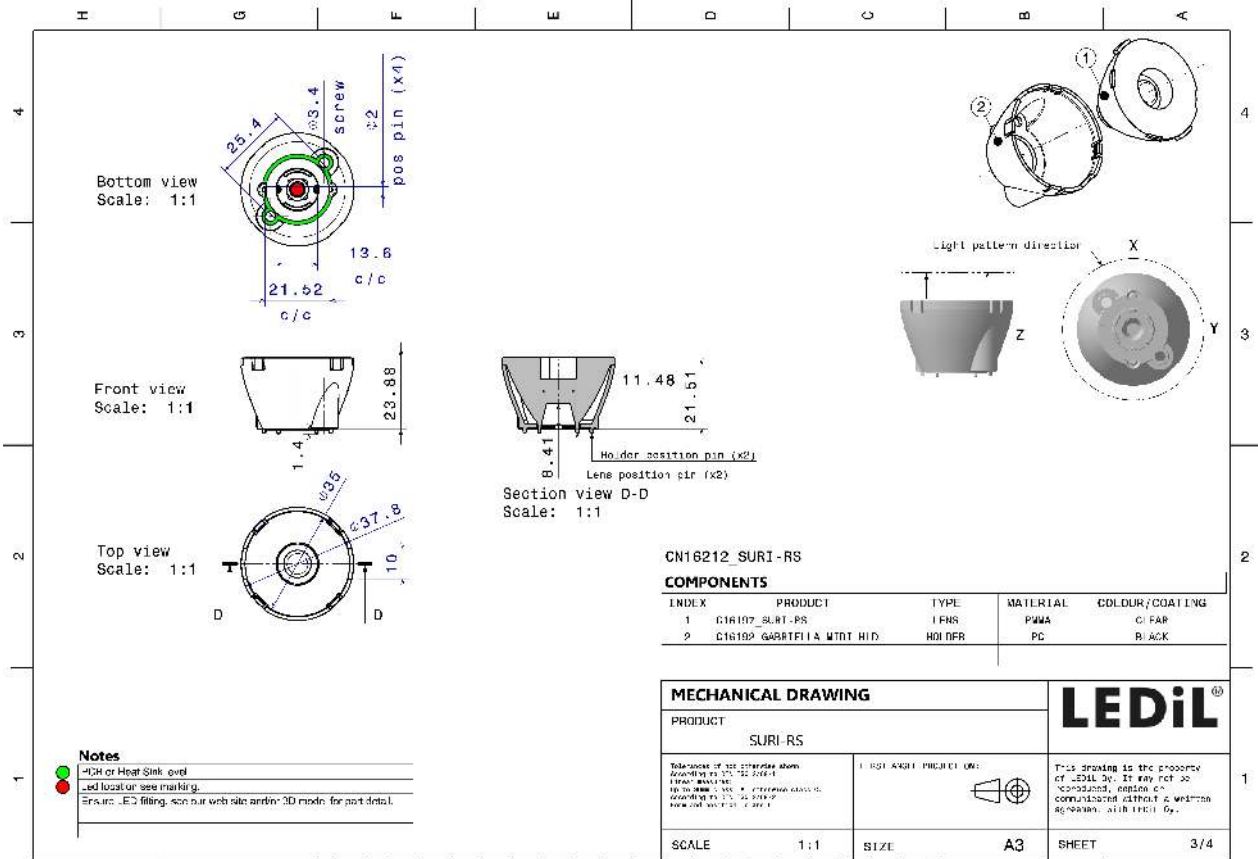
Component	Type	Material	Colour	Finish
SURI-RS	Single lens	PMMA	clear	
GABRIELLA-MIDI-HLD	Assembly	PC	black	

ORDERING INFORMATION:

Component	Type	Qty in box	MOQ	MPQ	Box weight (kg)
CA16206_SURI-RS » Box size: 476 x 273 x 292 mm	Single lens	500	100	50	11.7





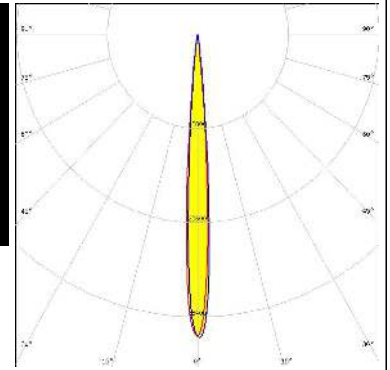


See also our general installation guide: www.ledil.com/installation_guide

OPTICAL RESULTS (MEASURED):

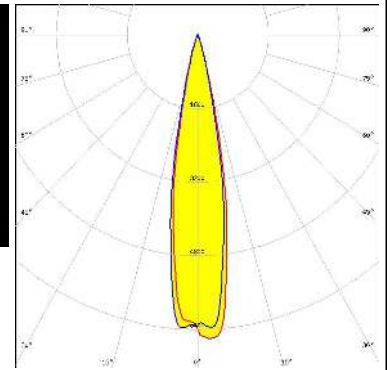
CREE → LED

LED XHP35 HI
 FWHM / FWTM 8.0° / 13.0°
 Efficiency 91 %
 Peak intensity 41 cd/lm
 LEDs/each optic 1
 Light colour White
 Required components:



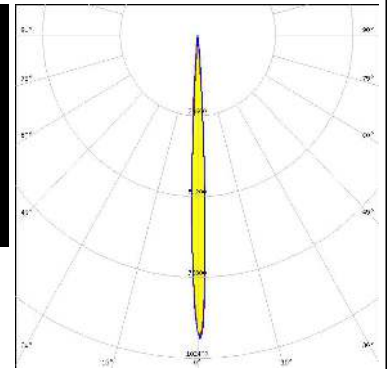
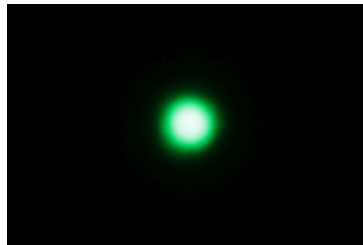
CREE → LED

LED XHP70.2
 FWHM / FWTM 20.0° / 32.0°
 Efficiency 87 %
 Peak intensity 6.6 cd/lm
 LEDs/each optic 1
 Light colour White
 Required components:



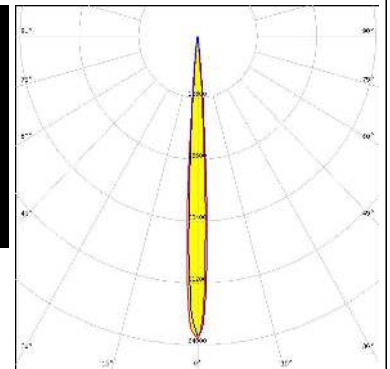
CREE → LED

LED XP-E2
 FWHM / FWTM 5.0° / 9.0°
 Efficiency 93 %
 Peak intensity 101 cd/lm
 LEDs/each optic 1
 Light colour Green
 Required components:



CREE → LED

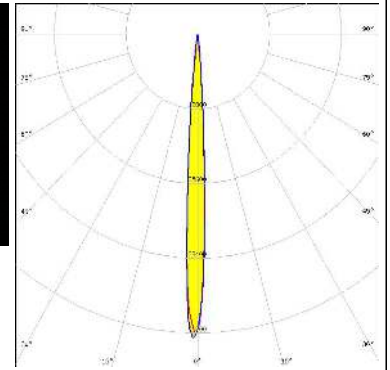
LED XP-G2
 FWHM / FWTM 7.0° / 11.0°
 Efficiency 94 %
 Peak intensity 63.1 cd/lm
 LEDs/each optic 1
 Light colour White
 Required components:



OPTICAL RESULTS (MEASURED):

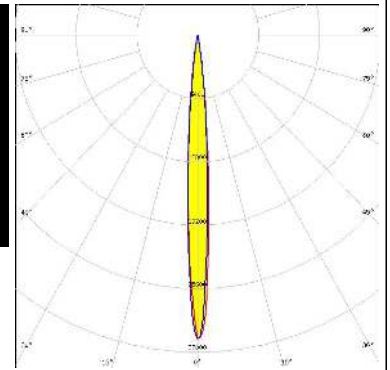
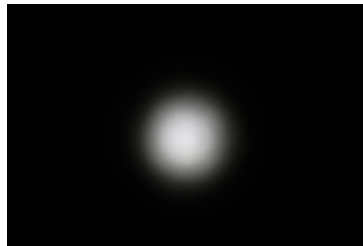
CREE LED

LED XP-L HI
 FWHM / FWTM 7.0° / 12.0°
 Efficiency 91 %
 Peak intensity 52.4 cd/lm
 LEDs/each optic 1
 Light colour White
 Required components:



CREE LED

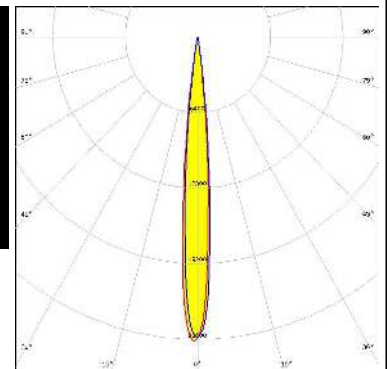
LED XP-L HI
 FWHM / FWTM 8.0° / 17.0°
 Efficiency 90 %
 Peak intensity 30.6 cd/lm
 LEDs/each optic 1
 Light colour White
 Required components:



Protective plate, glass

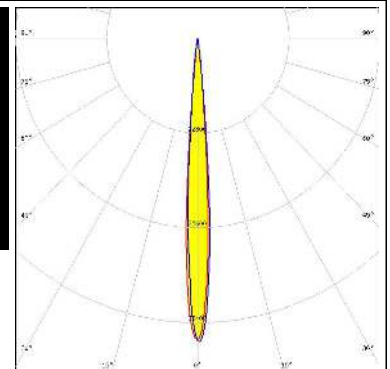
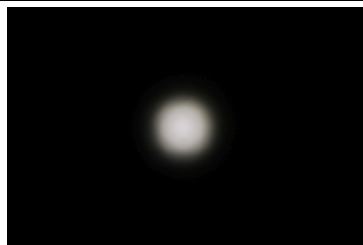
LUMILEDS

LED LUXEON V
 FWHM / FWTM 10.0° / 17.0°
 Efficiency 88 %
 Peak intensity 26 cd/lm
 LEDs/each optic 1
 Light colour White
 Required components:


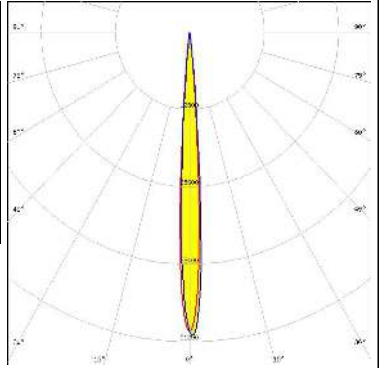

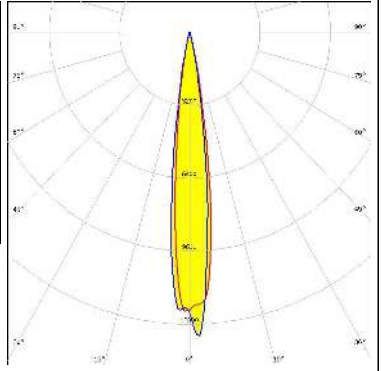

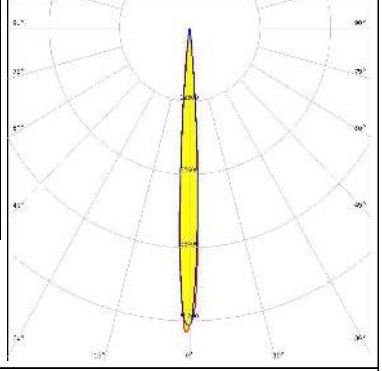

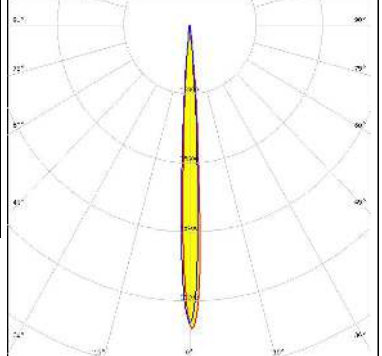


NICHIA

LED NVSW219F
 FWHM / FWTM 8.0° / 13.0°
 Efficiency 91 %
 Peak intensity 41 cd/lm
 LEDs/each optic 1
 Light colour White
 Required components:



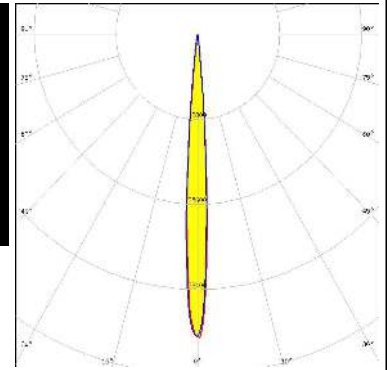
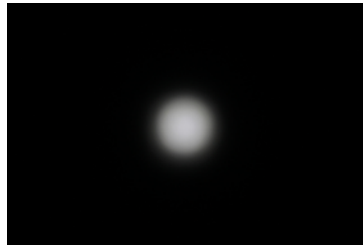
OPTICAL RESULTS (MEASURED):

<p>NICHIA</p> <p>LED NVSW719AC FWHM / FWTM 7.0° / 12.0° Efficiency 91 % Peak intensity 50.5 cd/lm LEDs/each optic 1 Light colour White Required components:</p>		
<p>OSRAM <small>Opto Semiconductors</small></p> <p>LED Duris S8 FWHM / FWTM 14.0° / 24.0° Efficiency 90 % Peak intensity 13 cd/lm LEDs/each optic 1 Light colour White Required components:</p>		
<p>OSRAM <small>Opto Semiconductors</small></p> <p>LED OSLOM Square CSSRM2/CSSRM3 FWHM / FWTM 7.0° / 12.0° Efficiency 91 % Peak intensity 53 cd/lm LEDs/each optic 1 Light colour White Required components:</p>		
<p>OSRAM <small>Opto Semiconductors</small></p> <p>LED OSLOM Square EC FWHM / FWTM 6.0° / 12.0° Efficiency 90 % Peak intensity 56 cd/lm LEDs/each optic 1 Light colour White Required components:</p>		

OPTICAL RESULTS (MEASURED):

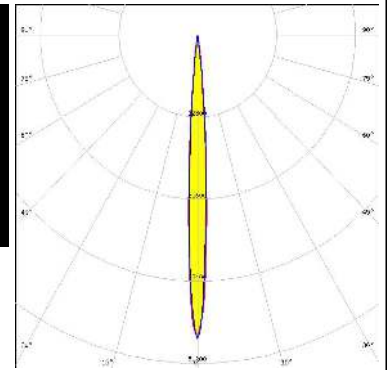
SAMSUNG

LED LH351B
 FWHM / FWTM 8.0° / 13.0°
 Efficiency 93 %
 Peak intensity 45.6 cd/lm
 LEDs/each optic 1
 Light colour White
 Required components:



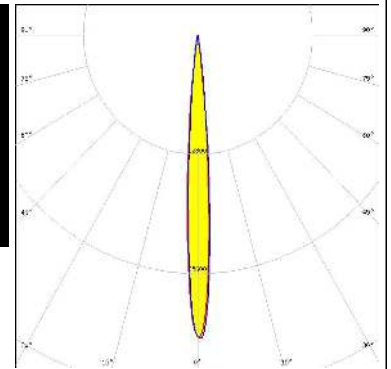
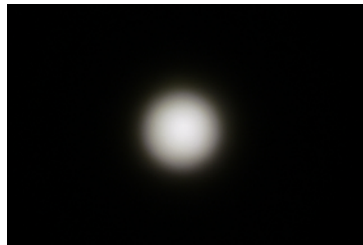
SAMSUNG

LED LM302A
 FWHM / FWTM 7.0° / 13.0°
 Efficiency 92 %
 Peak intensity 47 cd/lm
 LEDs/each optic 1
 Light colour White
 Required components:



SEOUL SEMICONDUCTOR

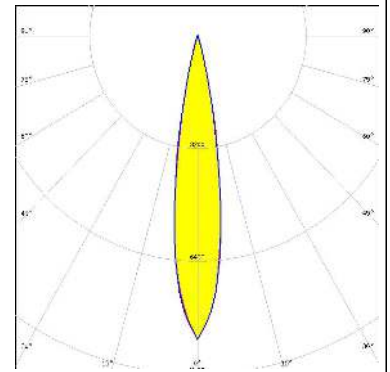
LED Z5M3
 FWHM / FWTM 8.0° / 15.0°
 Efficiency 88 %
 Peak intensity 32.8 cd/lm
 LEDs/each optic 1
 Light colour White
 Required components:



OPTICAL RESULTS (SIMULATED):

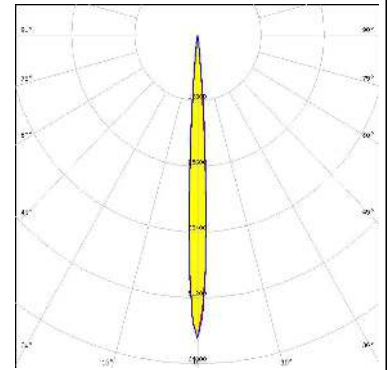
CREE → LED

LED MHD-E/G
 FWHM / FWTM 18.0° / 30.0°
 Efficiency 91 %
 Peak intensity 8.6 cd/lm
 LEDs/each optic 1
 Light colour White
 Required components:



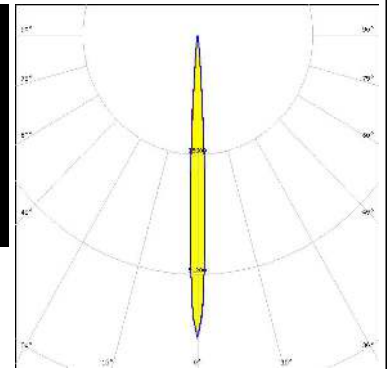
CREE → LED

LED XB-H
 FWHM / FWTM 6.0° / 12.0°
 Efficiency 90 %
 Peak intensity 59.2 cd/lm
 LEDs/each optic 1
 Light colour White
 Required components:



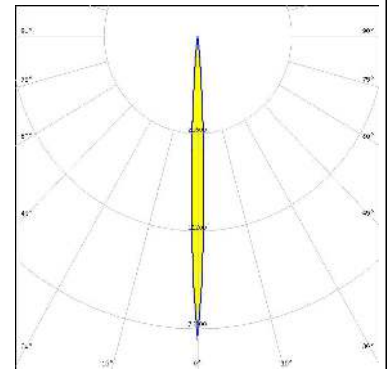
CREE → LED

LED XD16
 FWHM / FWTM 5.9° / 11.0°
 Efficiency 89 %
 Peak intensity 65 cd/lm
 LEDs/each optic 1
 Light colour White
 Required components:



CREE → LED

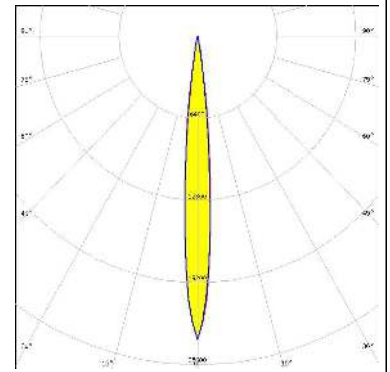
LED XE-G
 FWHM / FWTM 6.0° / 10.0°
 Efficiency 89 %
 Peak intensity 79.7 cd/lm
 LEDs/each optic 1
 Light colour White
 Required components:



OPTICAL RESULTS (SIMULATED):

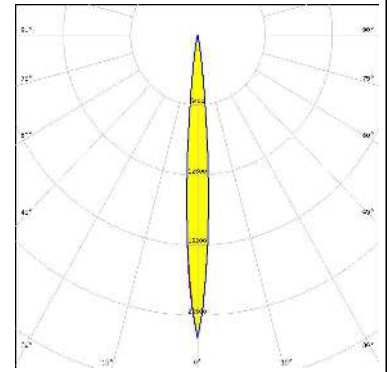
CREE LED

LED XHP35 HD
 FWHM / FWTM 10.0° / 18.0°
 Efficiency 91 %
 Peak intensity 23.7 cd/lm
 LEDs/each optic 1
 Light colour White
 Required components:



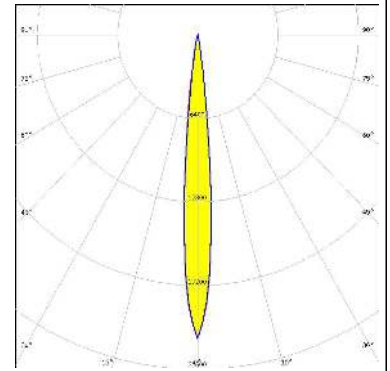
CREE LED

LED XHP35.2 HD
 FWHM / FWTM 8.0° / 18.0°
 Efficiency 87 %
 Peak intensity 27.8 cd/lm
 LEDs/each optic 1
 Light colour White
 Required components:



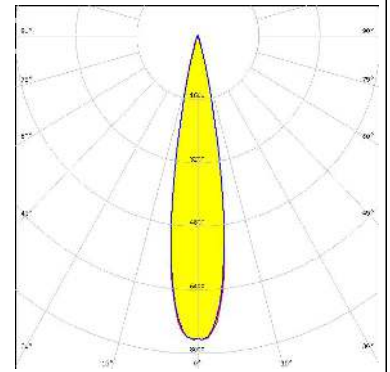
CREE LED

LED XHP50.3 HI
 FWHM / FWTM 10.0° / 18.0°
 Efficiency 96 %
 Peak intensity 23.3 cd/lm
 LEDs/each optic 1
 Light colour White
 Required components:



CREE LED

LED XHP70.3 HI
 FWHM / FWTM 20.0° / 30.0°
 Efficiency 95 %
 Peak intensity 7.7 cd/lm
 LEDs/each optic 1
 Light colour White
 Required components:



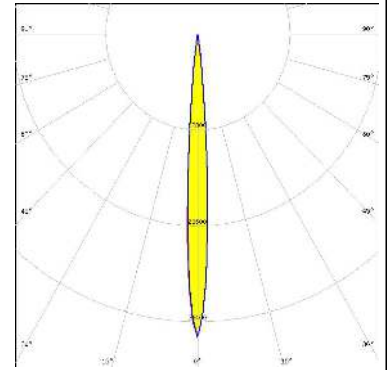
OPTICAL RESULTS (SIMULATED):

<p>CREE → LED</p> <p>LED: XP-E FWHM / FWTM: 6.0° / 12.0° Efficiency: 92 % Peak intensity: 75.7 cd/lm LEDs/each optic: 1 Light colour: White Required components:</p>	
<p>CREE → LED</p> <p>LED: XP-E2 FWHM / FWTM: 5.0° / 10.0° Efficiency: 91 % Peak intensity: 85 cd/lm LEDs/each optic: 1 Light colour: White Required components:</p>	
<p>CREE → LED</p> <p>LED: XP-E2 FWHM / FWTM: 6.0° / 12.0° Efficiency: 90 % Peak intensity: 70.2 cd/lm LEDs/each optic: 1 Light colour: Red Required components:</p>	
<p>CREE → LED</p> <p>LED: XP-G2 HE FWHM / FWTM: 8.0° / 14.0° Efficiency: 90 % Peak intensity: 38.5 cd/lm LEDs/each optic: 1 Light colour: White Required components:</p>	

OPTICAL RESULTS (SIMULATED):

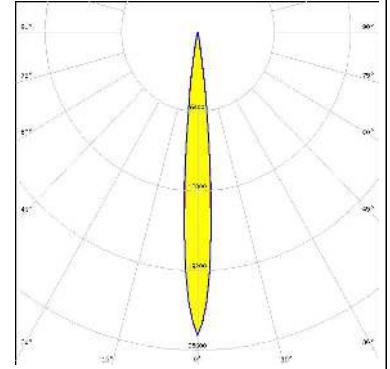
CREE → LED

LED XP-G3
 FWHM / FWTM 7.7° / 14.0°
 Efficiency 90 %
 Peak intensity 40.5 cd/lm
 LEDs/each optic 1
 Light colour White
 Required components:



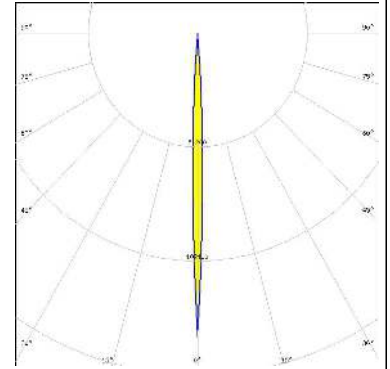
CREE → LED

LED XP-L2
 FWHM / FWTM 10.0° / 18.0°
 Efficiency 89 %
 Peak intensity 24.4 cd/lm
 LEDs/each optic 1
 Light colour White
 Required components:



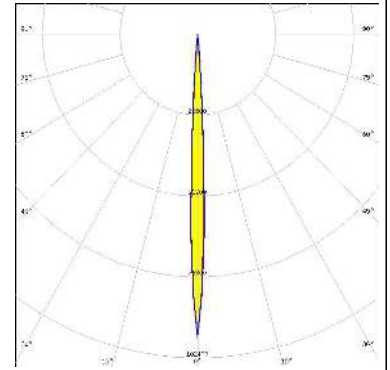
CREE → LED

LED XP-P
 FWHM / FWTM 4.0° / 8.0°
 Efficiency 90 %
 Peak intensity 136.5 cd/lm
 LEDs/each optic 1
 Light colour White
 Required components:



CREE → LED


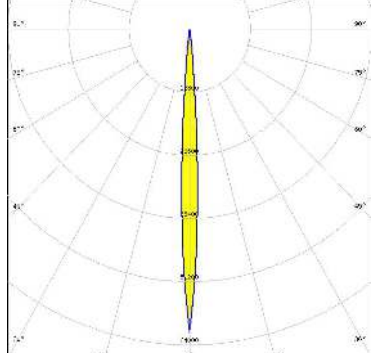

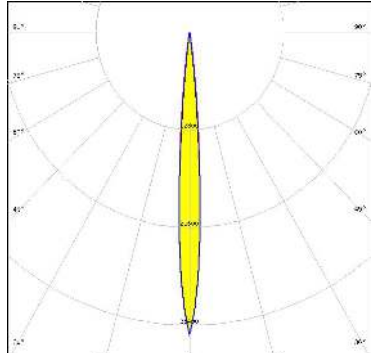


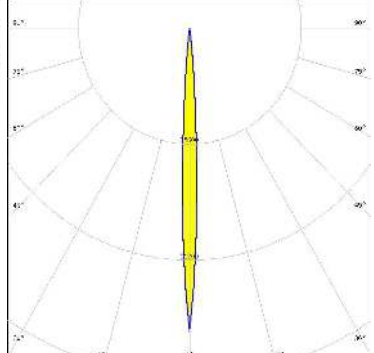

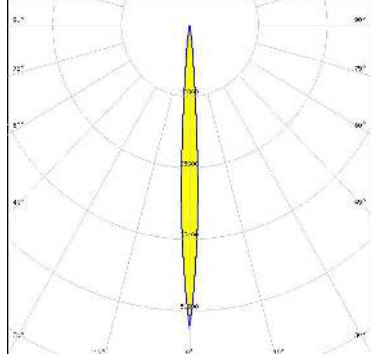
LED XQ-E HD
 FWHM / FWTM 5.2° / 9.5°
 Efficiency 92 %
 Peak intensity 96.1 cd/lm
 LEDs/each optic 1
 Light colour White
 Required components:



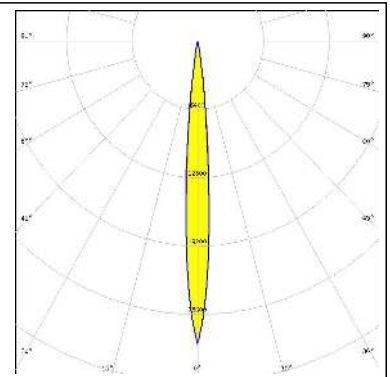
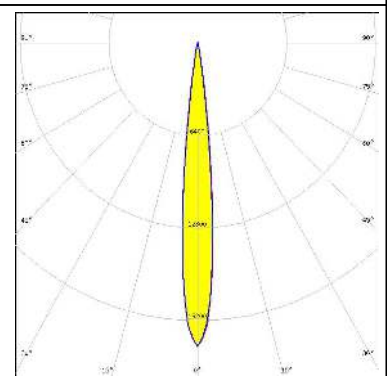
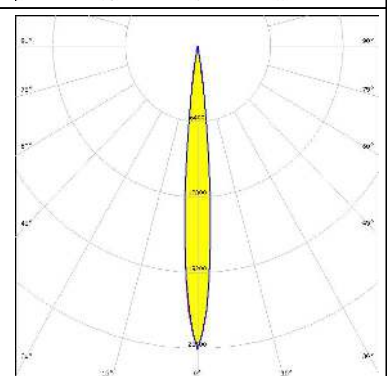
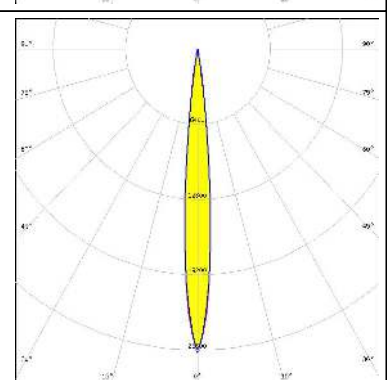
OPTICAL RESULTS (SIMULATED):

<p>LUMILEDS</p> <p>LED LUXEON 7070</p> <p>FWHM / FWTM 16.0° / 30.0°</p> <p>Efficiency 90 %</p> <p>Peak intensity 8.6 cd/lm</p> <p>LEDs/each optic 1</p> <p>Light colour White</p> <p>Required components:</p>	
<p>LUMILEDS</p> <p>LED LUXEON HL2X</p> <p>FWHM / FWTM 8.0° / 14.0°</p> <p>Efficiency 92 %</p> <p>Peak intensity 45.2 cd/lm</p> <p>LEDs/each optic 1</p> <p>Light colour White</p> <p>Required components:</p>	
<p>LUMILEDS</p> <p>LED LUXEON MZ</p> <p>FWHM / FWTM 10.5° / 17.8°</p> <p>Efficiency 94 %</p> <p>Peak intensity 24.3 cd/lm</p> <p>LEDs/each optic 1</p> <p>Light colour White</p> <p>Required components:</p>	
<p>LUMILEDS</p> <p>LED LUXEON Rebel Plus</p> <p>FWHM / FWTM 6.0° / 11.0°</p> <p>Efficiency 89 %</p> <p>Peak intensity 71.1 cd/lm</p> <p>LEDs/each optic 1</p> <p>Light colour White</p> <p>Required components:</p>	

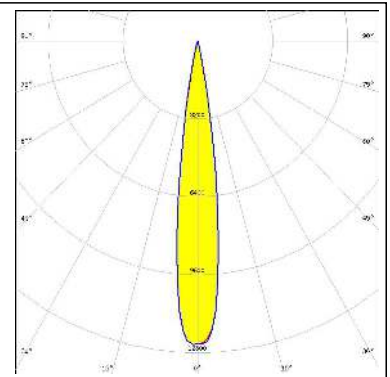
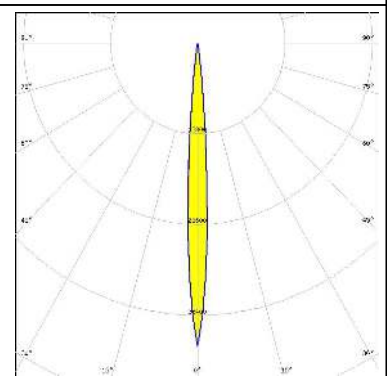
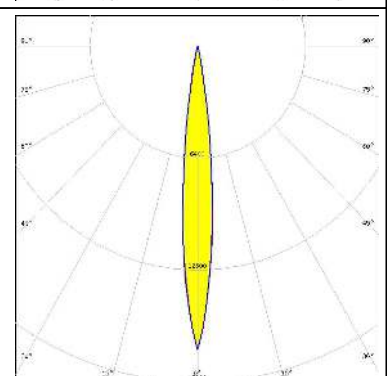
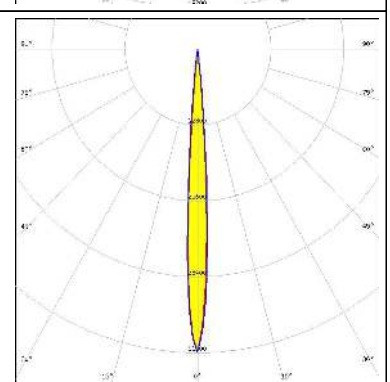
OPTICAL RESULTS (SIMULATED):

 <p>LED SFT-40-WCS FWHM / FWTM 6.0° / 12.0° Efficiency 95 % Peak intensity 61.6 cd/lm LEDs/each optic 1 Light colour White Required components:</p>		
 <p>LED SFT-70X-WCS FWHM / FWTM 8.0° / 14.0° Efficiency 96 % Peak intensity 39.8 cd/lm LEDs/each optic 1 Light colour White Required components:</p>		
 <p>LED SST-10-B130 FWHM / FWTM 6.0° / 11.0° Efficiency 91 % LEDs/each optic 1 Light colour IR Required components:</p>		
 <p>LED SST-20 FWHM / FWTM 6.0° / 12.0° Efficiency 90 % Peak intensity 54.4 cd/lm LEDs/each optic 1 Light colour White Required components:</p>		

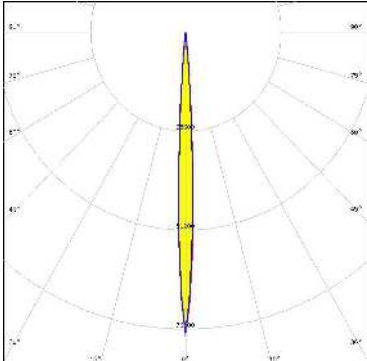
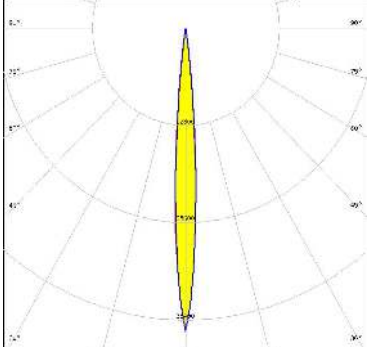
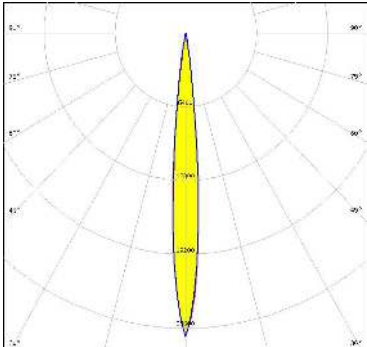
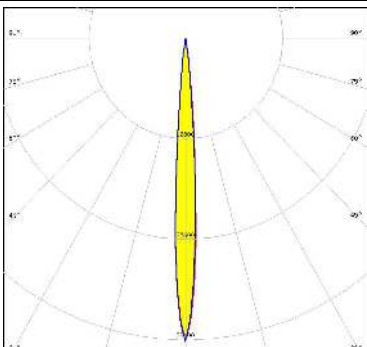
OPTICAL RESULTS (SIMULATED):

<p>LUMINUS</p> <p>LED SST-40 FWHM / FWTM 10.0° / 18.0° Efficiency 91 % Peak intensity 28.5 cd/lm LEDs/each optic 1 Light colour White Required components:</p>	
<p>LUMINUS</p> <p>LED SST-70X-WCS FWHM / FWTM 12.0° / 20.0 + 18.0° Efficiency 96 % Peak intensity 21 cd/lm LEDs/each optic 1 Light colour White Required components:</p>	
<p>NICHIA</p> <p>LED NV4WB35AM FWHM / FWTM 10.0° / 18.0° Efficiency 91 % Peak intensity 25.7 cd/lm LEDs/each optic 1 Light colour White Required components:</p>	
<p>NICHIA</p> <p>LED NV4WB35AM FWHM / FWTM 10.0° / 18.0° Efficiency 91 % Peak intensity 25.8 cd/lm LEDs/each optic 1 Light colour White Required components:</p>	

OPTICAL RESULTS (SIMULATED):

<p>NICHIA</p> <p>LED NV4x144A FWHM / FWTM 15.0° / 24.0° Efficiency 89 % Peak intensity 12.6 cd/lm LEDs/each optic 1 Light colour White Required components:</p>	
<p>NICHIA</p> <p>LED NVSxx19B/NVSxx19C FWHM / FWTM 7.5° / 14.4° Efficiency 91 % Peak intensity 42.9 cd/lm LEDs/each optic 1 Light colour White Required components:</p>	
<p>OSRAM <small>Opto Semiconductors</small></p> <p>LED OSOLON PURE 1010 FWHM / FWTM 12.0° / 22.0° Efficiency 88 % Peak intensity 17.4 cd/lm LEDs/each optic 9 Light colour White Required components:</p>	
<p>OSRAM <small>Opto Semiconductors</small></p> <p>LED SFH 4715AS FWHM / FWTM 8.0° / 12.0° Efficiency 90 % LEDs/each optic 1 Light colour IR Required components:</p>	

OPTICAL RESULTS (SIMULATED):

<p>OSRAM Opto Semiconductors</p> <p>LED SFH 4716AS FWHM / FWTM 6.0° / 10.0° Efficiency 90 % LEDs/each optic 1 Light colour IR Required components:</p>	
<p>SAMSUNG</p> <p>LED LH351C FWHM / FWTM 8.0° / 14.0° Efficiency 92 % Peak intensity 39.9 cd/lm LEDs/each optic 1 Light colour White Required components:</p>	
<p>SAMSUNG</p> <p>LED LH351D FWHM / FWTM 10.0° / 18.0° Efficiency 91 % Peak intensity 26.4 cd/lm LEDs/each optic 1 Light colour White Required components:</p>	
<p>SECO SEOUL SEMICONDUCTOR</p> <p>LED Z8Y22P FWHM / FWTM 8.0° / 14.0° Efficiency 87 % Peak intensity 38.7 cd/lm LEDs/each optic 1 Light colour White Required components:</p>	

OPTICAL RESULTS (SIMULATED):



GENERAL INFORMATION:

NOTE: The typical beam angle will be changed by different color, chip size and chip position tolerance. The typical total beam angle is the full angle measured where the luminous intensity is half of the peak value.

MATERIALS:

As part of our continuous research and improvement processes, and to ensure the best possible quality and availability of our products, LEDiL reserves the right to change material grades without notice.

PRODUCT DATA USER AGREEMENT AND DISCLAIMER:

The measured data in the provided downloadable LEDiL Product Datasheets and Mechanical 2D-Drawings is rounded and provided as reference for planning. LEDiL Oy's optical specifications have been verified by conducting performance testing of the products in accordance with the company's quality system. The reported data are averaged results of multiple measurements with typical variation. LEDiL Oy reserves the right to without prior notification make changes and improvements to its products.

LEDiL Oy assumes neither warranty, nor guarantee nor any other liability of any kind for the contents and correctness of the provided data. The provided data has been generated with highest diligence but the provided data may in reality not represent the complete possible variation range of all intrinsic parameters. Therefore, in certain cases a deviation from the provided data could occur.

LEDiL Oy reserves the right to undertake technical changes of its products without further notification which could lead to changes in the provided data. LEDiL Oy assumes no liability of any kind for the possible deviation from any provided data or any other damage resulting from the usage of the provided data.

The user agrees to this disclaimer and user agreement with the download or usage of the provided files.

LEDiL Oy

Joensuunkatu 13
FI-24240 SALO
Finland

LEDiL Inc.

228 West Page Street
Suite D
Sycamore IL 60178
USA

Ledil Optics Technology (Shenzhen) Co., Ltd.

405 , Block B
Casic Motor Building
Shenzhen 518057
P.R.CHINA

Local sales and technical support

[www.ledil.com/
where_to_buy](http://www.ledil.com/where_to_buy)

Shipping locations

Salo, Finland
Hong Kong, China

Distribution Partners

[www.ledil.com/
where_to_buy](http://www.ledil.com/where_to_buy)