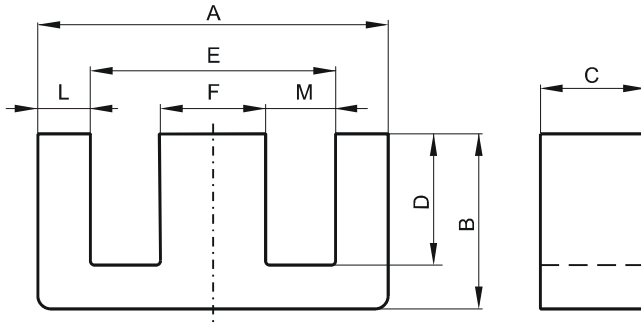


DIMENSIONS



(mm)	Nominal:	Tol. min.:	Tol. max.:
A	80.0	-1.6	+ 1.6
B	38.1	-0.3	+ 0.3
C	19.8	-0.4	+ 0.4
D	28.2	-0.3	+ 0.3
E	59.1 Min.		
F	19.8	-0.4	+ 0.4
L	11.25 Nom.		
M	19.45 Min.		
Eff. Parameters			
Ae mm²	Amin mm²	le mm	Ve mm³
392.0	392.0	184.0	72300

INDUCTANCE

AL value (nH)	Test conditions
Nom: 5080 Min.: 3810	10 kHz, < 0.5 mT, 25 °C

MARKING

0P48020EC PXXXXX

CORE LOSSES

P _i max	Test conditions
138 mW/cm ³ (10.0 W/set)	100 kHz, 100 mT, 100 °C

NOTE

Spec. modifications	Previous	Revised
2005-06-22	A=80.9 Max. A=79.1 Min. C=20.12 Max. C=19.51 Min. D=28.19 Min. E=59.3 Min. L=9.9 Nom. M=19.81 Min. Losses: General P material	A=81.6 Max. A=78.4 Min. C=20.2 Max. C=19.4 Min. D=27.9 Min. E=59.1 Min. L=11.25 Ref. M=19.45 Min. Losses: Detail as indicated