

7 6 5 4 3 2 1

E

E

D

D

C

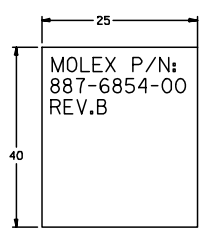
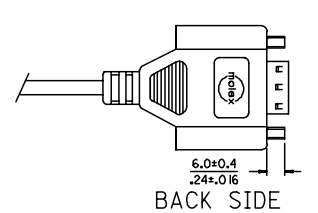
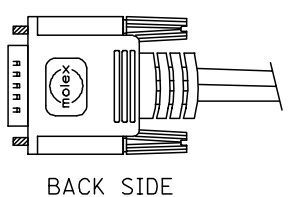
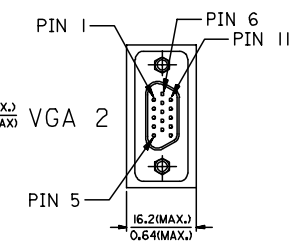
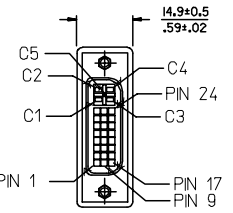
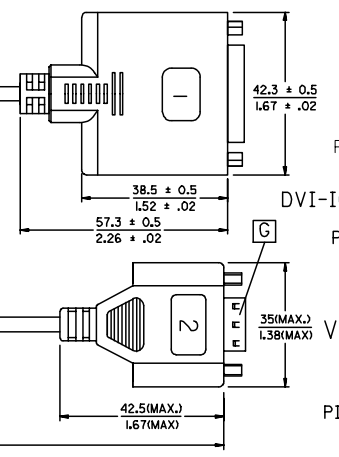
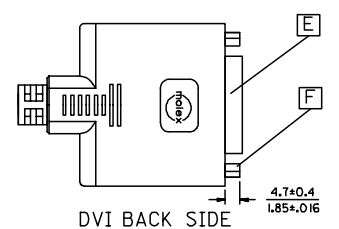
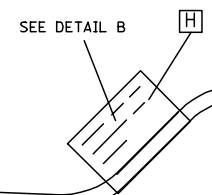
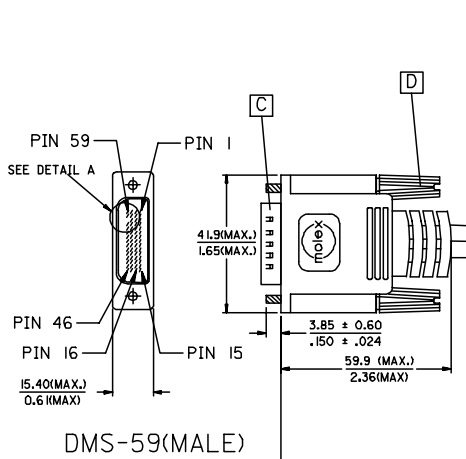
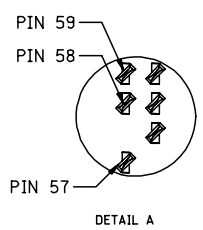
C

B

B

A

A



| | | | | | | | | |
|---|-----------------|--|----------------------|----------------------|---------------------|-------------------------------------|------------------------|-------|
| ENTER DESCRIPTION EC NO: DG2006-0186 DRWN:PDAI 2006/03/09 CHKD: 2006/03/09 APPR:TKAN 2006/03/10 DESCRIPTION REV | QUALITY SYMBOLS | GENERAL TOLERANCES (UNLESS SPECIFIED) | | DIMENSION STYLE | SCALE | DESIGN UNITS | THIRD ANGLE PROJECTION | |
| | ▽=0 ◻=0 | mm | INCH | MM/IN | --- | METRIC | | |
| | | 4 PLACES ± --- ± --- | 3 PLACES ± --- ± --- | 2 PLACES ± --- ± --- | 1 PLACE ± --- ± --- | DRAWN BY DATE | | TITLE |
| | | ANGULAR ± ---° | | APPROVED BY DATE | | MATERIAL NO. DOCUMENT NO. SHEET NO. | | |
| | | DRAFT WHERE APPLICABLE MUST REMAIN WITHIN DIMENSIONS | | BORON 2006/03/07 | | 887685400 SD-88744-098 1 OF 2 | | |

6

5

4

3

2

1

WIRING DIAGRAM:

| SHIELD | SHIELD | GROUND |
|--------|------------|--------------------------|
| C5 | PIN 1,4,59 | GROUND(RED, BLUE, GREEN) |
| C4 | PIN 56 | VGA1_HSYNC |
| C3 | PIN 3 | VGA1_BLUE |
| C2 | PIN 58 | VGA1_GREEN |
| C1 | PIN 2 | VGA1_RED |
| PIN 23 | PIN 31 | DVII_TXC+ |
| PIN 24 | PIN 32 | DVII_TXC- |
| PIN 22 | PIN 57 | DVII_TXC RTN |
| PIN 19 | PIN 33 | DVII_TX0 RTN |
| PIN 18 | PIN 29 | DVII_TX0+ |
| PIN 17 | PIN 30 | DVII_TX0- |
| PIN 16 | PIN 36 | DVII_HPD |
| PIN 15 | PIN 54 | GROUND |
| PIN 14 | PIN 5 | +5V |
| PIN 11 | PIN 34 | DVII_TX1 RTN |
| PIN 10 | PIN 27 | DVII_TX1+ |
| PIN 9 | PIN 28 | DVII_TX1- |
| PIN 8 | PIN 55 | VGA1_VSYNC |
| PIN 7 | PIN 7 | DVII_DDC_DATA |
| PIN 6 | PIN 6 | DVII_DDC_CLOCK |
| PIN 3 | PIN 35 | DVII_TX2 RTN |
| PIN 2 | PIN 25 | DVII_TX2+ |
| PIN 1 | PIN 26 | DVII_TX2- |
| DVI_I | DMS-59 | CABLE FUNCTION |

| SHIELD | SHIELD | GROUND |
|--------|--------|----------------|
| PIN 15 | PIN 10 | VGA_SCL |
| PIN 14 | PIN 51 | VGA_VSYNC |
| PIN 13 | PIN 50 | VGA_HSYNC |
| PIN 12 | PIN 9 | VGA_SDA |
| PIN 10 | PIN 52 | GROUND(SYNCS) |
| PIN 9 | PIN 11 | +5V |
| PIN 8 | PIN 12 | GROUND(BLUE) |
| PIN 7 | PIN 46 | GROUND(GREEN) |
| PIN 6 | PIN 15 | GROUND(RED) |
| PIN 5 | PIN 49 | GROUND(ANALOG) |
| PIN 3 | PIN 13 | VGA_BLUE |
| PIN 2 | PIN 47 | VGA_GREEN |
| PIN 1 | PIN 14 | VGA_RED |
| VGA2 | DMS-59 | CABLE FUNCTION |

NOTE: 1. OVERMOLD SPECIFICATION

- 1.1 DMS-59 BOOT MOLDED WITH SNOW WHITE PVC RESIN, UL94V-0.
- 1.2 VGA BOOT MOLDED WITH BLUE PVC RESIN, UL94V-0.
- 1.3 DVI-I BOOT MOLDED WITH SNOW WHITE PVC RESIN: , UL94V-0.

2. MECHANICAL SPECIFICATION

- ▽ 2.1 CABLE SHOULD STAND THE PULL FORCE 89-111N FOR 30 SECONDS WITH NO VISIBLE TERMINATION DAMAGE.
- 2.2 CABLE SHOULD PASS THE FLEX TEST IN 100 CYCLES AT EACH OF PLANES, PER EIA 364-41, CONDITION I.

3. CABLE ASSEMBLY ELECTRICAL SPECIFICATION

- ▽ 3.1 HI-POT VOLTAGE: 300VDC FOR 10ms.
 - ▽ 3.2 INSULATION RESISTANCE: 20 MEGA Ohms PER MIN.
 - ▽ 3.3 CONNECTION RESISTANCE: 2 Ohms MAX.
 - ▽ 3.4 DIFFERENTIAL LINES CHARACTERISTIC IMPEDANCE: 100±7 Ohms. @TDR 200 PSEC RISE TIME.
 - ▽ 3.5 COAXIAL LINES CHARACTERISTIC IMPEDANCE: 75±10% Ohms @TDR 200 PSEC RISE TIME.
 - 3.6 WRAP COPPER TAPE OVER BRAID, THEN CRIMP THE METAL CAN ON COPPER TAPE WITH 360°.
4. CONNECTOR PLATING: GOLD FLASH PLATING.
5. SCREW SPEC.: 4-40 UNC.

MATERIAL LIST:

| H | LABEL | I |
|------|-----------------------------|------|
| G | VGA D-SUB CONNECTOR(FEMALE) | 1 |
| F | DVI(F) JACK SCREW | 2 |
| E | DVI-I FEMALE CONNECTOR | 1 |
| D | LFH THUMB SCREW 4-40 UNC | 2 |
| C | DMS-59 PLUG ASSY(NATURE) | 1 |
| B | DVI-A/D CABLE BLACK | 1 |
| A | DVI ANALOG CABLE BLACK | 1 |
| ITEM | DESCRIPTION | QTY. |

| | | | | | | | | | | | |
|--|--|-------------------------------|---------------------------------------|----------------------|--------------------------|---------------------------|------------------------------|------------------------|---|--|--|
| ENTER DESCRIPTION EC NO: DG2006-0186 DRWN: PDAI CHKD: APPR: TKAN | 2006/03/09 2006/03/09 2006/03/10 | QUALITY SYMBOLS ▽=0 ▽=0 | GENERAL TOLERANCES (UNLESS SPECIFIED) | | DIMENSION STYLE MM/IN | | SCALE --- | DESIGN UNITS METRIC | THIRD ANGLE PROJECTION | | |
| | 4 PLACES ± --- ± --- | | 3 PLACES ± --- ± --- | 2 PLACES ± --- ± --- | 1 PLACE ± --- ± --- | ANGULAR ± ---° | DRAWN BY PDAI | DATE 2006/03/07 | TITLE DMS59(M) TO DVI-I(F)+ VGA(F) ADAPTE CABLE | | |
| | DRAFT WHERE APPLICABLE MUST REMAIN WITHIN DIMENSIONS | | | | | CHECKED BY ZXDENG | DATE 2006/03/07 | APPROVED BY BORON | | | |
| | | | | | | MATERIAL NO. 887685400 | DOCUMENT NO. SD-88744-098 | SHEET NO. 2 OF 2 | | | |