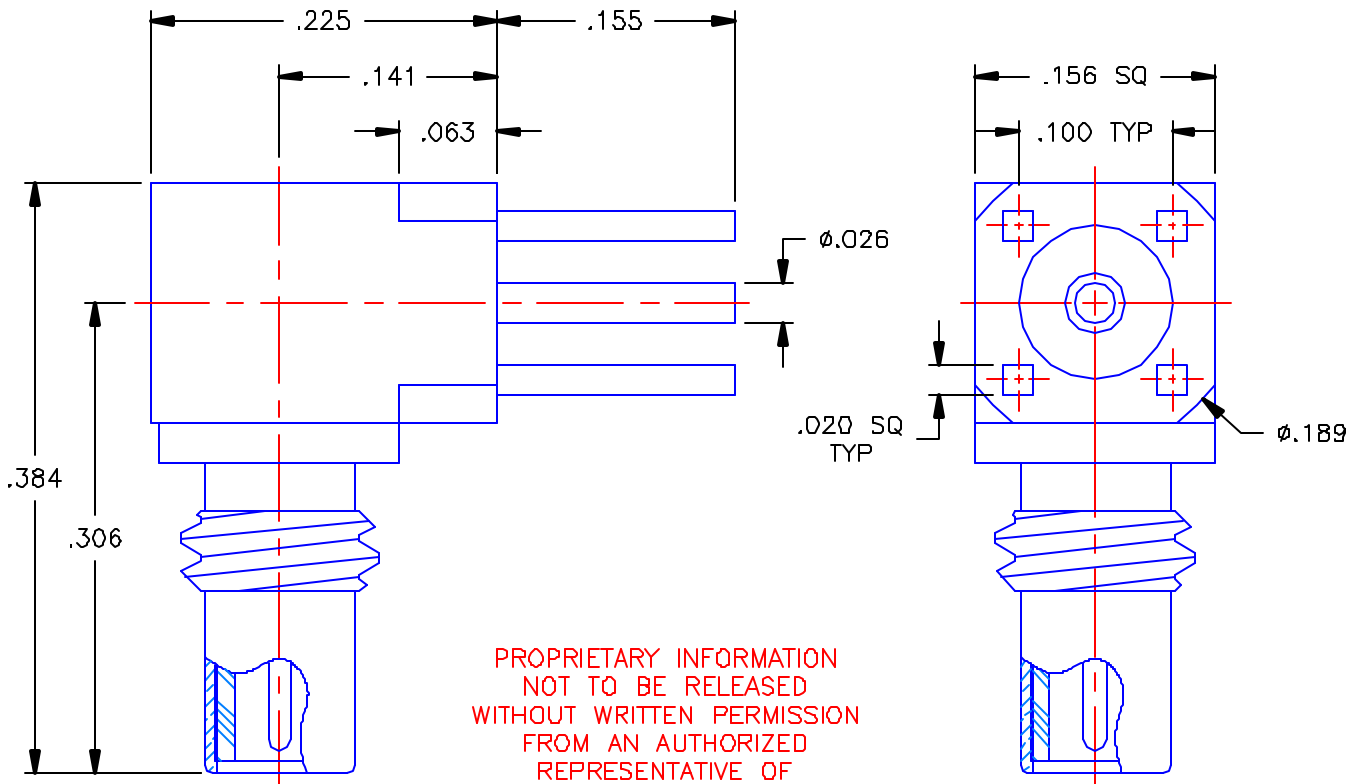


REVISIONS			
REV	DESCRIPTION	DATE	APPROVED
A	ECO #5520	09/16/04	A.D.M.




NOTES:

MATERIALS:

1. P.C.B. BODY & CAP = BRASS PER ASTM B16, ALLOY C36000, TEMPER H02.
2. INTERFACE BODY & CONTACTS = BERYLLIUM COPPER PER ASTM B196, ALLOY C17300, TEMPER TD04.
3. INSULATORS = VIRGIN WHITE TEFLON PER ASTM D1710, GRADE 1, TYPE I, CLASS "B".

FINISHES:

1. CONTACTS = GOLD PLATE PER MIL-G-45204, TYPE II, CLASS 1, GRADE C, OVER .00010 TO .00020 STRESS FREE SULFAMATE NICKEL PER QQ-N-290.
2. ALL OTHER METAL PARTS = GOLD PLATE PER MIL-G-45204, TYPE II, CLASS 0, GRADE C, OVER .00010 TO .00020 COPPER STRIKE PER MIL-C-14550.

UNLESS OTHERWISE SPECIFIED DIMENSIONS ARE IN INCHES TOLERANCES ON		DWN. A D.M.	DATE 09/13/04	 APPLIED ENGINEERING PRODUCTS 104 John W. Murphy Dr. New Haven, CT 06513
		CHKD:	DATE 09/16/04	
DECIMAL	ANGLE	D.N.	DATE 09/16/04	
		APVD: D.J.C.	DATE 09/16/04	
REFERENCE:		MATERIALS & FINISHES: SEE NOTES		SSMC RIGHT ANGLE MALE JACK P.C.B. MOUNT RECEPTACLE
ORIGINATOR: Y.V. DATE: 03/20/91		SIZE A	FSCM NO. 19505	DWG NO. 7010-1511-000
		SCALE 8:1	REV A	
				SHEET 1 OF 1

7010-1511-000