

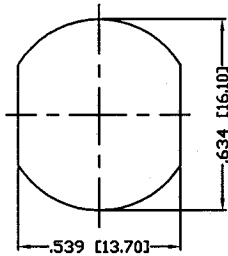
THIS DRAWING CONTAINS INFORMATION PROPRIETARY TO RF INDUSTRIES,
 ANY UNAUTHORIZED USE OF THIS DRAWING IS EXPRESSLY PROHIBITED
 WITHOUT WRITTEN PERMISSION FROM RF INDUSTRIES.
 ANY VIOLATION IS PUNISHABLE UNDER U.S. COPYRIGHT LAWS.

ALL DIMENSIONS ARE REFERENCE ONLY

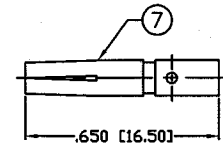
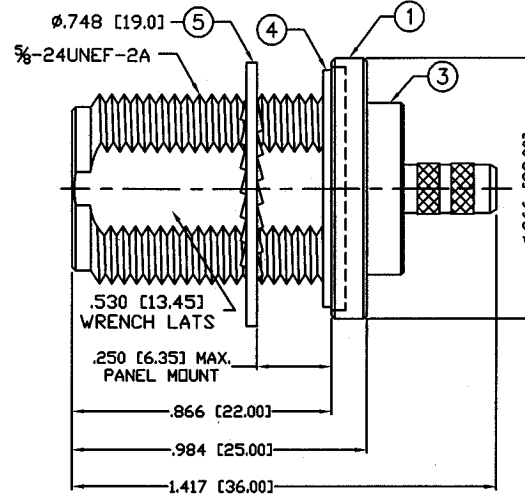
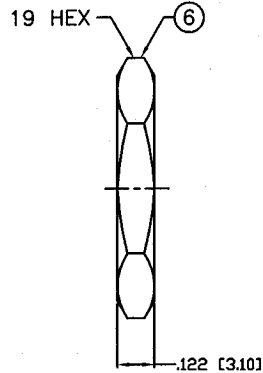
PART NO.

RFN-1022-8-C

REV	DESCRIPTION	DWN	DATE	APPROVED
A	ENGINEERING RELEASE	KMM	10/27/96	C. JONES
B	UPDATE WRAWING	CZS	1/20/98	R. RICE
C	CHANGE FORMAT, SPECS & DWG # 8857	CZS	8/23/01	JDMc



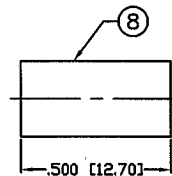
RECOMMENDED MOUNTING HOLE



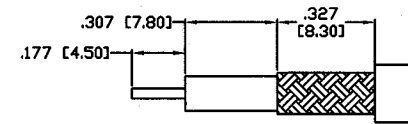
RECOMMENDED CRIMP DIE: .100

SPECIFICATIONS:

IMPEDANCE: 50 OHMS
 FREQUENCY RANGE: 0-11 GHZ
 VSWR: 1.3 Max.
 INSERTION LOSS: .06 dB Max. $X\sqrt{fGHz}$
 WORKING VOLTAGE: 1k V rms @ sea level
 TEMPERATURE RANGE: -65°C TO 165°C
 INSULATION RESISTANCE: 5k M Ohms min.
 FOR RG-58, 58A, 58C, 141, 141A, BELDEN 8240,
 8262, 9201, 9203, 9310, 9311 & COMM/SCOPE 0268



RECOMMENDED CRIMP DIE: .213



RECOMMENDED STRIPPING DIM'S

1	BODY	1	BRASS	NICKEL, 100μ	008974	
2	INSULATOR	1	PTFE	----		
3	BARREL	1	BRASS	NICKEL, 100μ		
4	GASKET	1	SILICONE	----		
5	LOCK WASHER	1	BRASS	NICKLE, 100μ		
6	HEX NUT	1	BRASS	NICKEL, 100μ		
7	PIN	1	PHOS BRONZE	GOLD, 3μ		
8	FERRULE	1	BRASS	NICKEL, 100μ		
9						
10					DRAWN	
11					C. ZUNIGA	
12					CHECKED	
13					ORJ DRAWN	
14					KMM	
#	DESCRIPTION	QTY	MATERIAL	FINISH	APPROVALS	DATE

UNLESS OTHERWISE SPECIFIED:
 1. REMOVE ALL BURRS
 2. BREAK ALL CORNERS & EDGES .005 R. MAX.
 3. CHAMFER 1ST & LAST THREADS 45°
 4. SURFACE ROUGHNESS 63 FINISH MIL-STD-10
 5. DIAMETERS ON COMMON CENTERS TO BE CONCENTRIC WITHIN .002 T.I.R.
 6. ALL DIMENSIONS ARE AFTER PLATING.

DIMENSIONS ARE IN INCHES AND [MILLIMETERS]
 UNLESS OTHERWISE NOTED TOLERANCES ARE:
 DECIMALS DIAMETER
 .XXX±.003 [.08] .XXX±.001 [.03]
 .XX±.005 [.13] .XX±.003 [.08]

RF connectors
 DIVISION OF RF INDUSTRIES, LTD.
 7610 MIRAMAR RD
 SAN DIEGO, CA 92126
 (858) 549-6340
 (858) 549-6345 FAX

N FEMALE BULKHEAD CRIMP			
SIZE	CABLE GROUP	DWG NO.	REV
A	C	RFN-1022-8-C	C
SCALE:	NTS	CAD FILE	OUTLINE
			SHEET 1 OF 1