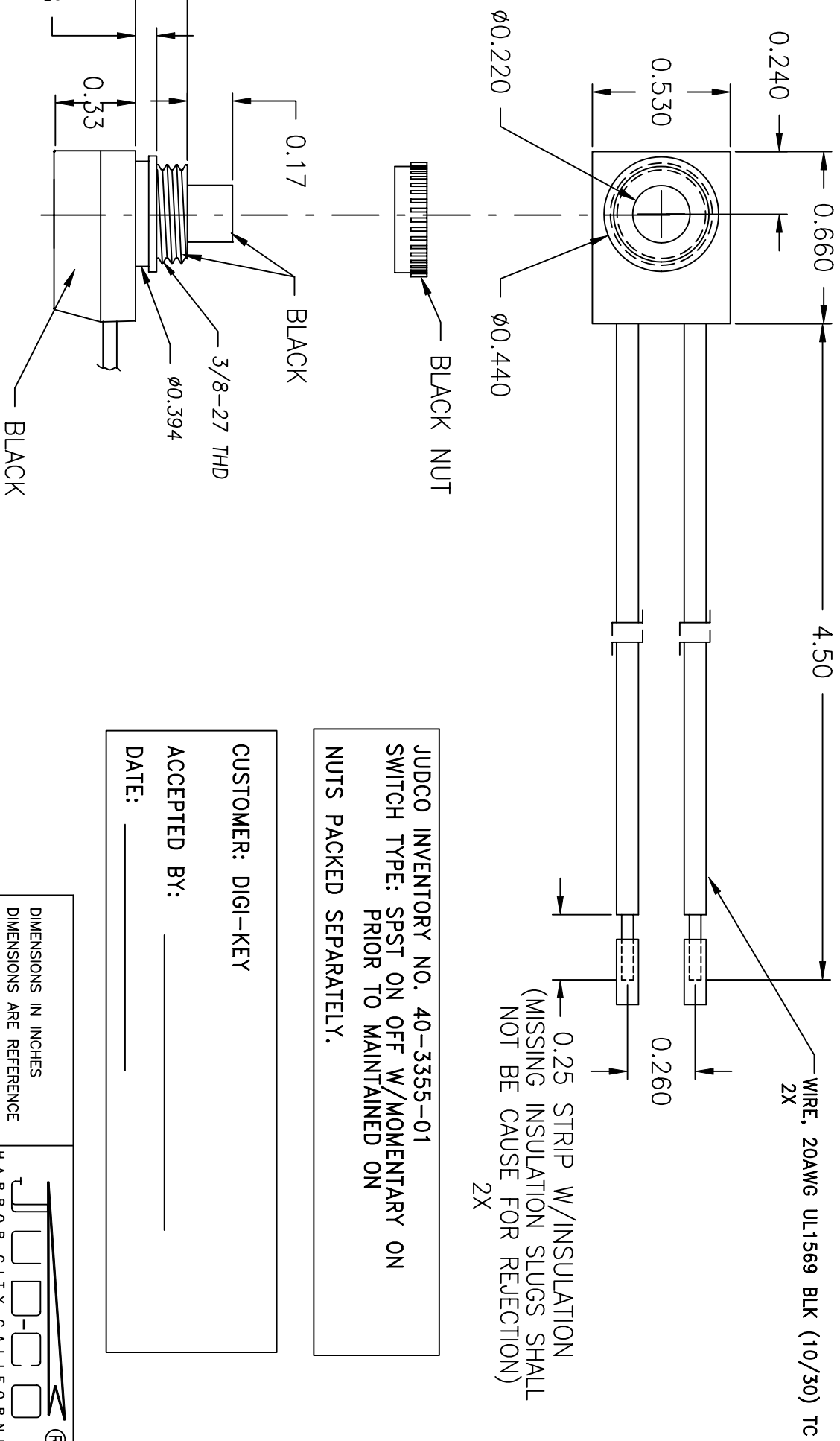


LTR	EN	DESCRIPTION	APPR	BY	DATE
A	-	INITIAL RELEASE	RB	NH	11-10-03



JUDCO INVENTORY NO. 40-3355-01
 SWITCH TYPE: SPST ON OFF W/MOMENTARY ON
 PRIOR TO MAINTAINED ON
 NUTS PACKED SEPARATELY.

CUSTOMER: DIGI-KEY
 ACCEPTED BY: _____
 DATE: _____

DIMENSIONS IN INCHES DIMENSIONS ARE REFERENCE		
TITLE HARBOR CITY CALIFORNIA		
DRAWN: NH 11-10-03	DWG. NO. 1415-494	OUTLINE
APPR: KJ 11-10-03		J-188B-1 MOMENTARY
1415U494A.DWG		SHEET 1 OF 1

This document embodies a product, component, and/or design proprietary to JUDCO MANUFACTURING INC., and which is protected either as a trade secret, by U.S. Patent, or by copyright. It may not be used in any way without written express consent of JUDCO MANUFACTURING INC.