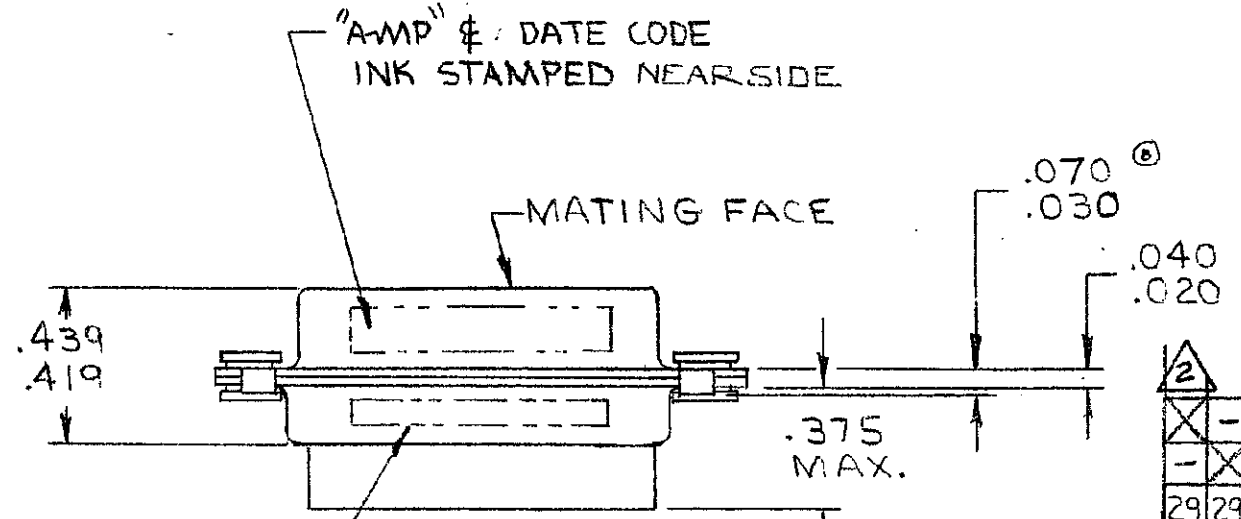
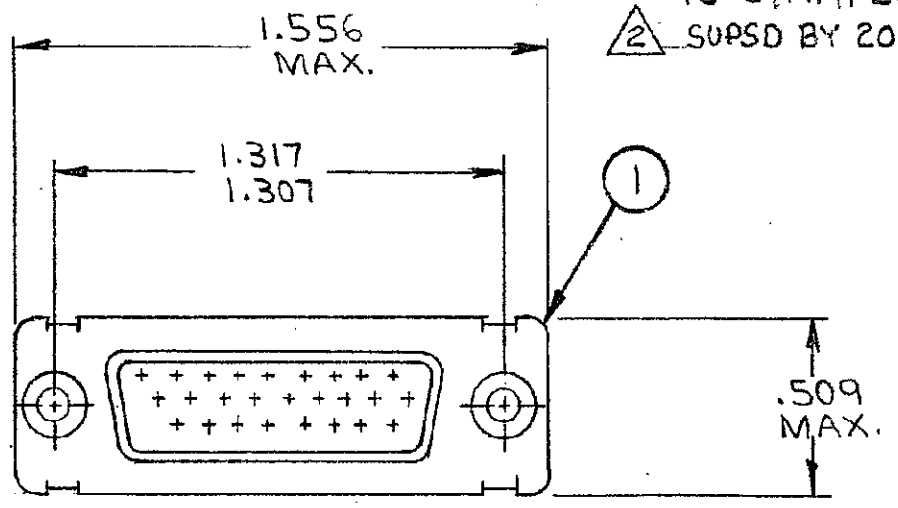


DRAWING MADE IN AMERICAN PROJECTION

© AMP INCORPORATED. ALL RIGHTS RESERVED. AMP PRODUCTS COVERED BY PATENTS AND/OR PATENTS PENDING.

Not to be reproduced without written permission of AMP Incorporated.

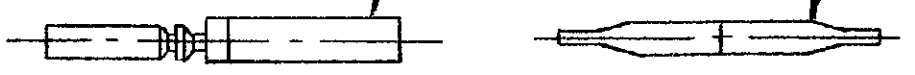
- ① APPROPRIATE AMP P/N (KIT) IS STAMPED ON PACKAGE.
- ② SUPSD BY 204538-2 & 91067-1



③ MILITARY P/N M24308/2-29F INK STAMPED FAR SIDE.

③

②



REVISIONS				
ZONE	LTR	DESCRIPTION	DATE	APPROVED
	A	REV. & REDRAWN, RELEASED WAS 5066-172 PER ECN A-962	12-29-70	<i>L.M. / J.S.</i>
		NOTES ADDED ECN B-011	2/4/71	<i>J.S. / J.S.</i>
	B	REV. PER ECN B-948	5/11/73	<i>L.M. / J.S.</i>
	B1	REV. PER ECN E-342	5/19/76	<i>L.M. / J.S.</i>
	C	REV. PER ECN G-047	2/3/79	<i>J.S. / J.S.</i>
	D	REV PER ECN DF-0021; DF-0160 & R2670	1-13-88	<i>Edna</i>
	E	REV PER Q600-6687-97	8-20-90	<i>CT</i>

<input checked="" type="checkbox"/>	-	-	MILITARY P/N M24308/2-40F STAMPED ON PACKAGE			
<input checked="" type="checkbox"/>	-	-	MILITARY P/N M24308/2-29F STAMPED ON PACKAGE			
29	29	-	B	204351-1	CONTACT, SOCKET, SIZE 22D	3
1	-	1	B	91067-1	INSERTION & EXTRACTION TOOL	2
1	1	1	A	204526-1	RECEPTACLE ASSY., SIZE #2	1
3	2	-		DWG NUMBER	NAME	ITEM No.

204538 204538 204538	UNLESS OTHERWISE SPECIFIED DIMENSIONS ARE IN INCHES: TOLERANCES ON: DECIMALS ± .005 ANGLES ± .1°	CONTRACT NO.	AMP AMP INCORPORATED HARRISBURG, PENNSYLVANIA	
	MATERIAL	DR. <i>L. Morningstar</i> 12-29-70		
①	//	CHK. <i>D. Bauer</i> 1-19-71	NAME KIT "HDD" SERIES, RECEPTACLE, SIZE #2	
		APPD. <i>D. Bauer</i> 1-19-71	SIZE B	CODE IDENT NO. 00779
		REL. <i>A. W. ...</i> 1-19-71	NUMBER 204538	SHEET 1 OF 1
		DSGN APPD.	SCALE //	
		OTHER APPD.		