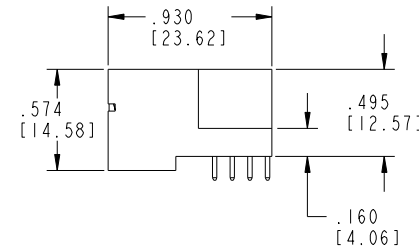
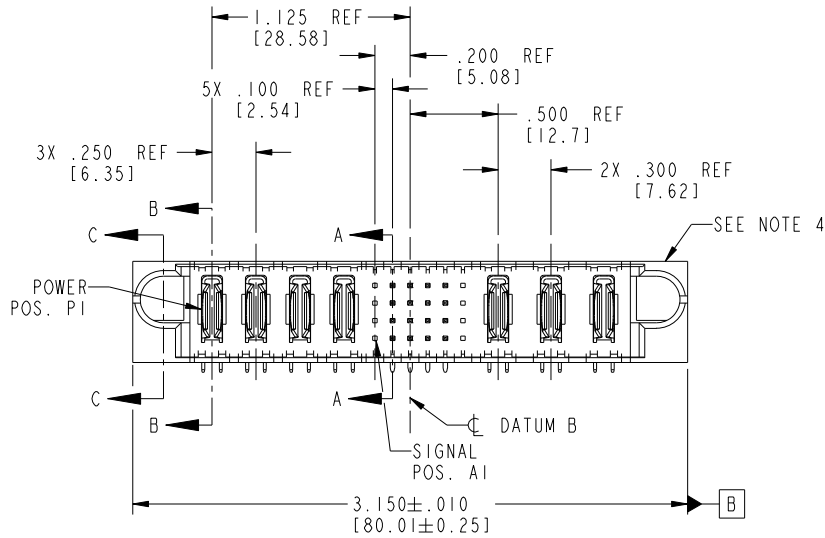


Tous droits strictement reserves. Reproduction ou communication a des tiers interdite sous quelque forme que ce soit sans autorisation ecrite du proprietaire. Property of FCI. Copyright FCI. Droits de reproduction FCI.



All rights strictly reserved. Reproduction or issue to third parties in any form whatever is not permitted without written authority from the proprietor. Property of FCI. Copyright FCI.

PRODUCT NO.	ROWS	POWER				SIGNAL						POWER			E2	
		E1	P1	P2	P3	P4	1	2	3	4	5	6	P5	P6		P7
51939-115-- NOTE 3	D C B A						X	H	U	U	U	X				
			PA	PA	PA	PA	X	T	G	T	T	X				
							X	S	S	S	S	X				
							X	R	R	R	R	X				



CODE	DIM "M" MATING LENGTH	CONTACT TYPE
G	.220 [5.59]	SIGNAL
H	.220 [5.59]	SIGNAL
R	.270 [6.86]	SIGNAL
S	.270 [6.86]	SIGNAL
T	.270 [6.86]	SIGNAL
U	.270 [6.86]	SIGNAL
PA	N/A [N/A]	POWER
X	OMITTED	OMITTED

mat'l code				SEE NOTE 2		tolerances unless otherwise specified		CUSTOMER		 www.fciconnect.com	
ltr	ecn no.	dr	date	linear	.XX±.01/0.X±0.3		COPY		projection		
A	V04-0294	TAB	03/22/04		.XXX±.005/0.XX±0.13		INCH/MM		title 4P + 24S + 3ACP		
B	V04-0318	TAB	03/26/04	angles	.XXX±.0020/0.XXX±0.051		 scale 1:1		RIGHT ANGLE SOLDER HEADER		
C	DG06-0013	RYAN	01/10/06		0°±2°		product family PwrBlade		code 213		
D	DG09-0003	WD	02/12/09	dr	T. BRUNGARD	03/22/04	size	dwg no	sheet		
				enrg	M. GRAY	03/22/04	A	51939-115	1 of 4		
				chr	M. GRAY	03/22/04					
				appd	M. GRAY	03/22/04					
sheet index	revision sheet	D	D	D	D		cage code 22526				
		1	2	3	4						

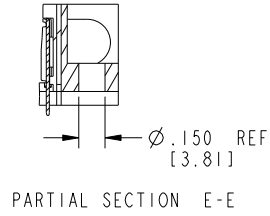
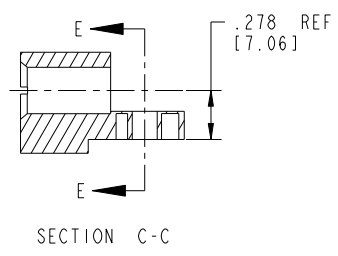
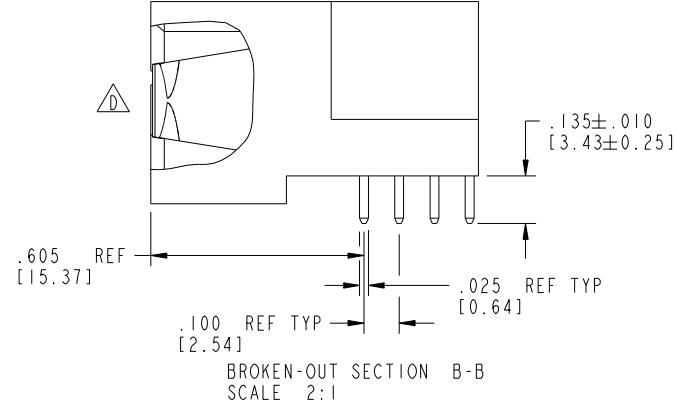
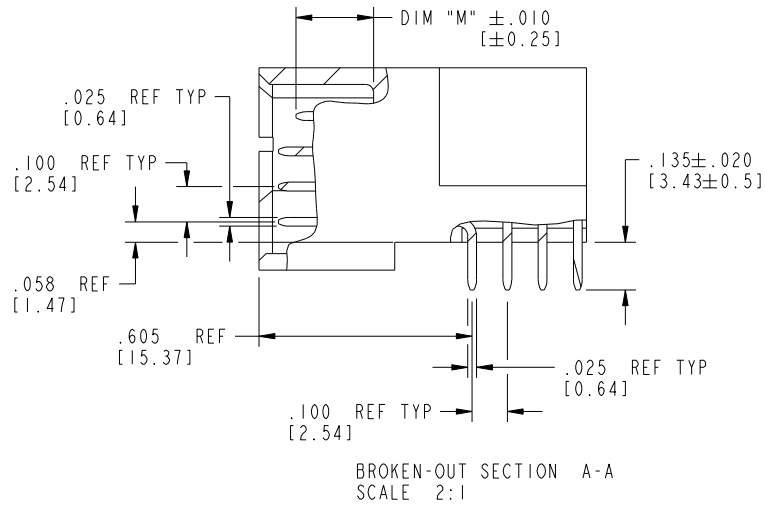
Pro/E

cage code 22526

Tous droits strictement réservés. Reproduction ou communication à des tiers interdite sous quelque forme que ce soit sans autorisation écrite du propriétaire. Propriété de c FCI. Droits de reproduction FCI.

All rights strictly reserved. Reproduction or issue to third parties in any form whatever is not permitted without written authority from the proprietor. Property of FCI. Copyright FCI.

PRODUCT NUMBER
51939-115--
NOTE 3



mat'l code		SEE NOTE 2		tolerances unless otherwise specified		CUSTOMER		FCI	
ltr	ecn no.	dr	date	linear	.XX±.01/0.X±0.3	COPY		www.fciconnect.com	
D					.XXX±.005/0.XX±0.13	projection		title 4P + 24S + 3ACP	
				angles	.XXX±.0020/0.XXX±0.051			RIGHT ANGLE SOLDER HEADER	
				dr	T. BRUNGARD 03/22/04	INCH/MM		product family PwrBlade code 213	
				enr	M. GRAY 03/22/04	scale		size dwg no 213	
				chr	M. GRAY 03/22/04	1:1		sheet 2 of 4	
				appd	M. GRAY 03/22/04	A		51939-115	
sheet index	revision sheet								

Pro/E

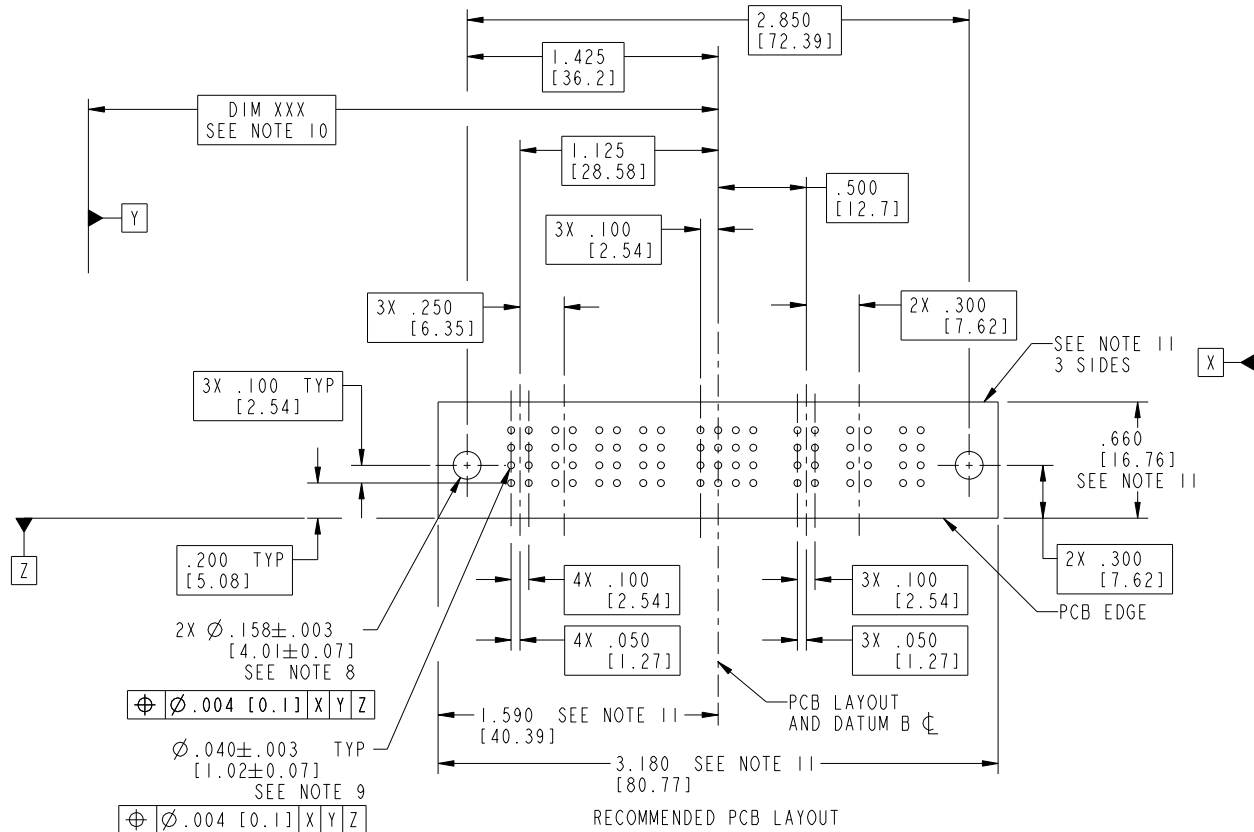
cage code 22526

Tous droits strictement reserves. Reproduction ou communication a des tiers interdite sous quelque forme que ce soit sans autorisation ecrite du propriétaire. Propriete de c FCI. Droits de reproduction FCI.



All rights strictly reserved. Reproduction or issue to third parties in any form whatever is not permitted without written authority from the proprietor. Property of FCI. Copyright FCI.

PRODUCT NUMBER
51939-115__
NOTE 3



mat'l code		SEE NOTE 2		tolerances unless otherwise specified		CUSTOMER		 www.fciconnect.com	
lfr	ecn no.	dr	date	linear	.XX±.01/0.X±0.3	COPY		title	
D					.XXX±.005/0.XX±0.13	projection		4P + 24S + 3ACP	
				angles	.XXX±.0020/0.XXX±0.051			RIGHT ANGLE SOLDER HEADER	
				dr	0°+2°	INCH/MM		product family	
				enr	T. BRUNGARD 03/22/04	scale		PwrBlade	
				chr	M. GRAY 03/22/04	1:1		code	
				appd	M. GRAY 03/22/04	A		213	
sheet index	revision sheet					size		dwg no	
						51939-115		213	
						3 of 4			

cage code 22526

Pro/E

Tous droits strictement reserves. Reproduction ou communication a des tiers interdite sous quelque forme que ce soit sans autorisation écrite du propriétaire. Propriete de c FCI. Droits de reproduction FCI.

All rights strictly reserved. Reproduction or issue to third parties in any form whatever is not permitted without written authority from the proprietor. Property of FCI. Copyright FCI.

PRODUCT NUMBER
51939-115__
NOTE 3

NOTES:

1. DIMENSIONS AND TOLERANCES ARE IN ACCORDANCE WITH ASME Y14.5M, 1994 UNLESS OTHERWISE SPECIFIED.

CONNECTOR NOTES:

- 2. HOUSING MATERIAL: UL 94 V-0 GLASS FILLED HIGH-TEMP THERMOPLASTIC
POWER CONTACT MATERIAL: COPPER ALLOY
SIGNAL PIN MATERIAL: COPPER ALLOY

3. SEE ITEM 1 & 2 IN PRINT 10064183 FOR PLATING SPEC OF 51939-115 AND 51939-115LF RESPECTIVELY.

- 4. MANUFACTURER'S NAME, P/N, AND DATE CODE TO APPEAR ON THIS SURFACE.

5. PRODUCT SPECIFICATION GS-12-149.
APPLICATION SPECIFICATION BUS-20-067.

6. PACKAGED IN TRAYS.

PCB NOTES:

7. ALL HOLE DIAMETERS ARE FINISHED HOLE SIZE.

- 8. MOUNTING HOLES, WHERE APPLICABLE, ARE UNPLATED.

- 9. $\varnothing .0453 \pm .0010$ [1.151 \pm 0.025] DRILLED HOLES PLATED WITH
.0003 [0.008] MIN SnPb OVER .001 [0.03]
TO .003 [0.08] Cu PLATING TO ACHIEVE
 $\varnothing .040 \pm .003$ [1.02 \pm .07] HOLE.

- 10. "DIM XXX" TO BE DETERMINED BY THE CUSTOMER.

- 11. CONNECTOR KEEP-OUT ZONE.

12. A Δ SYMBOL WILL BE NEXT TO ANY DIMENSION, VIEW, OR NOTE WHICH HAS BEEN MODIFIED WITH THE CURRENT DRAWING REVISION.

mat'l code				SEE NOTE 2		tolerances unless otherwise specified		CUSTOMER		FCJ		www.fciconnect.com	
lfr	ecn no.	dr	date	linear	.XX±.01/0.X±0.3		COPY		projection	title			4P + 24S + 3ACP RIGHT ANGLE SOLDER HEADER
D					.XXX±.005/0.XX±0.13		INCH/MM			product family		PwrBlade	
				angles	.XXX±.002/0.XXX±0.051		1:1		size		dwg no		sheet
				dr	0°+2°		A		51939-115		4 of 4		
				enr	T. BRUNGARD	03/22/04							
				enr	M. GRAY	03/22/04							
				chr	M. GRAY	03/22/04							
				appd	M. GRAY	03/22/04							
sheet index	revision sheet												

cage code 22526