

**AMPHENOL PART NUMBER CONFIGURATION**

UX75 - A 20 - X 0 0 X T

**SFP RECEPTACLE**

U75 = NON-RoHS  
UE75 = RoHS COMPLIANT

**CONTACT PLATING**

(FOR U75 NON-RoHS)

- 1 = PLATING OPTION 1 (SEE MATERIAL NOTES)
  - 4 = PLATING OPTION 4 (SEE MATERIAL NOTES)
- (FOR UE75 RoHS)
- 2 = PLATING OPTION 2 (SEE MATERIAL NOTES)
  - 3 = PLATING OPTION 3 (SEE MATERIAL NOTES)
  - 5 = PLATING OPTION 5 (SEE MATERIAL NOTES)
  - 6 = PLATING OPTION 6 (SEE MATERIAL NOTES)

**LUBRICANT OPTION ON MATING AREA**

0 = NO  
1 = YES

REVISIONS				
SYM	ZONE	ECN, ERN NO.	DATE	APPRD.
K		UPDATED MATERIAL FOR HOUSING	MAY29/07	J.S.
L		UPDATED	APR16/08	A.G.
M		UPDATED	MAR 14/11	J.S.
N		UPDATED	NOV 21/11	J.S.
P		UPDATED	JUL 16/12	J.S.

THIS IS A CAD DRAWING. DO NOT MANUALLY REVISE.

**MATERIAL NOTES:**

**PLASTIC HOUSING:**

HIGH TEMPERATURE LCP  
FLAMMABILITY RATING UL94V-0.

**CONTACTS:**

**PHOSPHOR BRONZE**

- PLATING OPTION 1: (U75 ONLY)**  
30µ" [0.76 µm] MIN. GOLD ON MATING AREA AND 150-300 µ" (3.81-7.62 µm) MIN. TIN/LEAD (90/10) PLATING ON TERMINATION OVER 50µ" [1.27 µm] MIN. NICKEL UNDER LAYER.
- PLATING OPTION 2: (RoHS FOR UE75 ONLY)**  
30µ" [0.76 µm] MIN. GOLD ON MATING AREA AND 2 µ" (0.05 µm) GOLD FLASH PLATING ON TERMINATION OVER 50µ" [1.27 µm] MIN. NICKEL UNDER LAYER.
- PLATING OPTION 3: (RoHS FOR UE75 ONLY)**  
30µ" [0.76 µm] MIN. GOLD ON MATING AREA AND 150-300 µ" (3.81-7.62 µm) MIN. LOW WHISKER MATTE TIN PLATING ON TERMINATION OVER 50µ" [1.27 µm] MIN. NICKEL UNDER LAYER.
- PLATING OPTION 4: (FOR U75 ONLY)**  
15µ" [0.38 µm] MIN. GOLD ON MATING AREA AND 150-300 µ" (3.81-7.62 µm) MIN. TIN/LEAD (90/10) PLATING ON TERMINATION OVER 50µ" [1.27 µm] MIN. NICKEL UNDER LAYER.
- PLATING OPTION 5: (RoHS FOR UE75 ONLY)**  
15µ" [0.38 µm] MIN. GOLD ON MATING AREA AND 2 µ" (0.05 µm) GOLD FLASH PLATING ON TERMINATION OVER 50µ" [1.27 µm] MIN. NICKEL UNDER LAYER.
- PLATING OPTION 6: (RoHS FOR UE75 ONLY)**  
15µ" [0.38 µm] MIN. GOLD ON MATING AREA AND 150-300 µ" (3.81-7.62 µm) MIN. LOW WHISKER MATTE TIN PLATING ON TERMINATION OVER 50µ" [1.27 µm] MIN. NICKEL UNDER LAYER.
- LUBRICANT OPTION:** LUBRICANT CAN BE ADDED ON THE CONTACTS MATING AREA (SEE P/N FOR THE OPTION)

**PACKAGING:**

TAPE AND REEL.

**TEMPERATURE RANGE:**

-40°C TO +85°C

DRAWN	J.SI	DATE	2005/03/08
DESIGNED	J.SI	DATE	2005/03/08
CHECKED	X		X
I. E. APPRD.			
Q. A. APPRD.			

**Amphenol Canada Corp.**

TITLE: SFP 20 POSITION HIGH SPEED CONNECTOR RECEPTACLE FIXED BOARD, RIGHT ANGLE SMT OPTIONAL PLATING AND LUBRICANT ON MATING

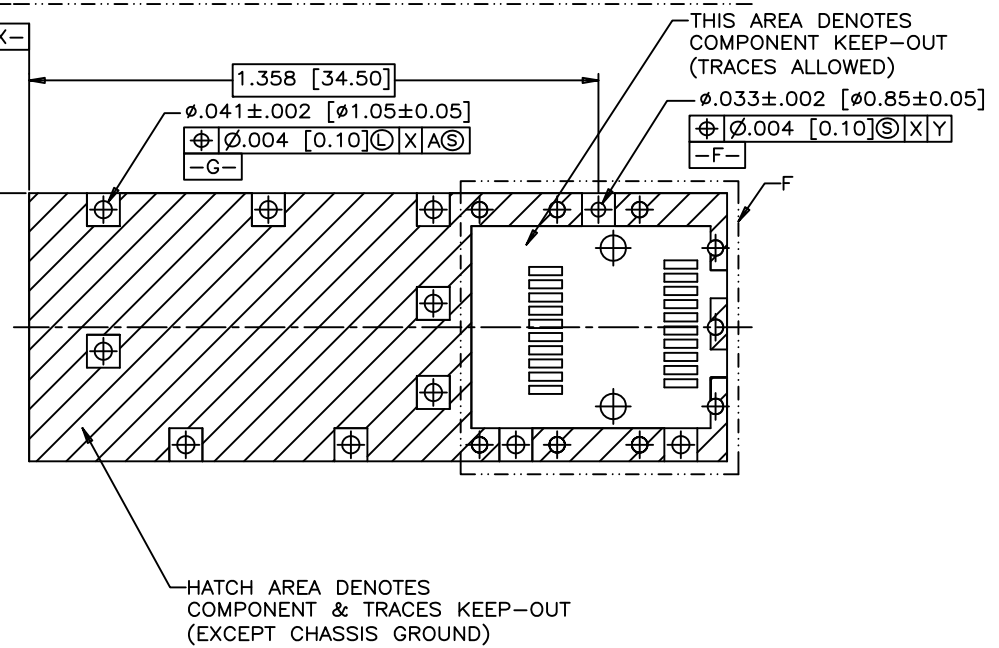
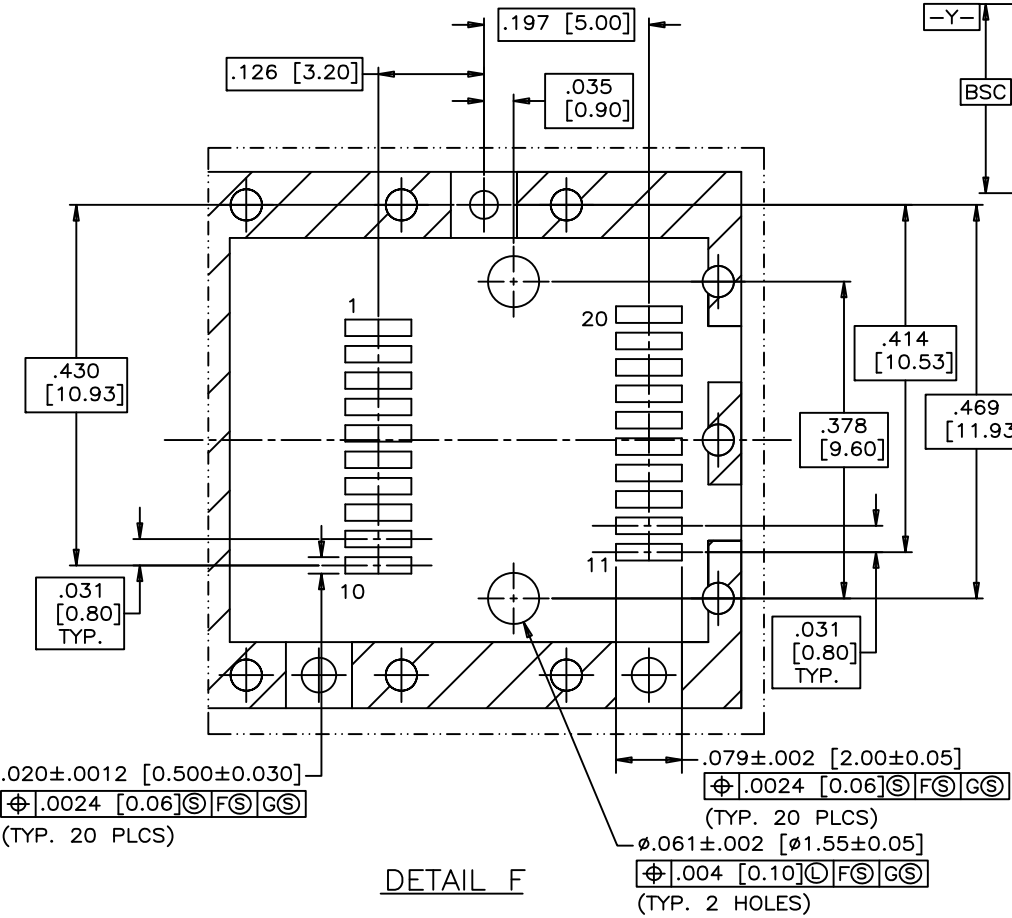
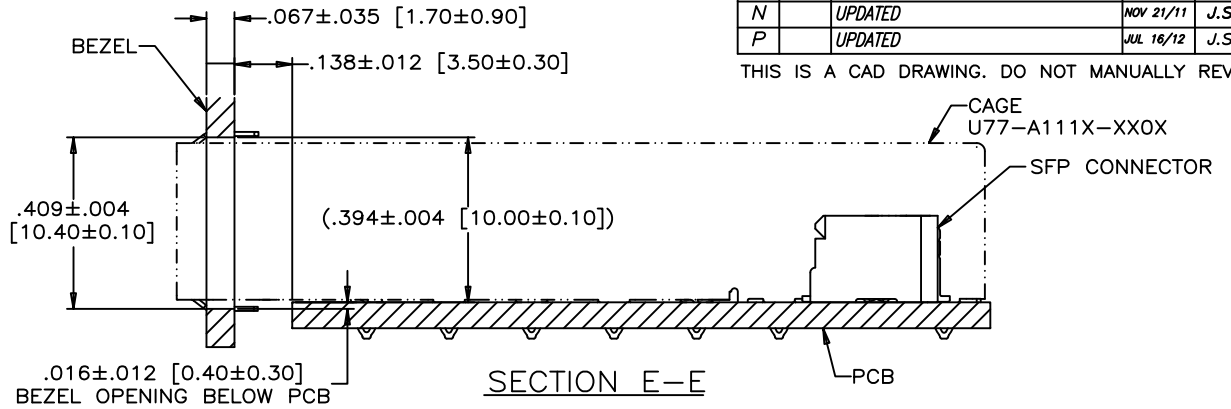
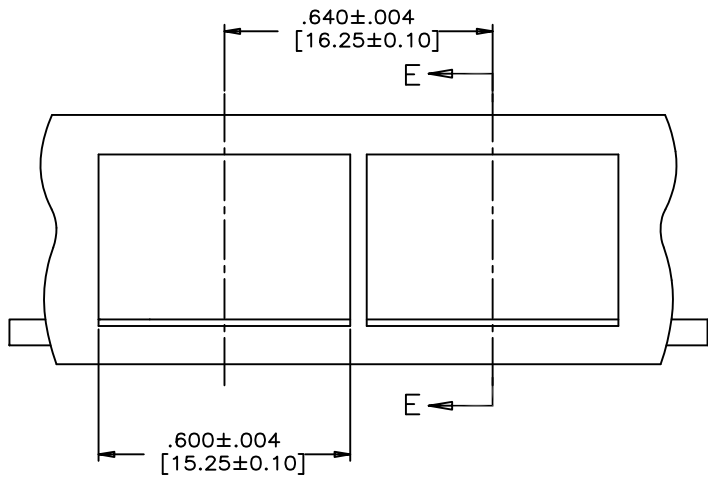
GENERAL TOLERANCES		DWG. APPRD.	
DECIMALS	INCH	MILLIMETERS	ENG. REL. NO.
	X.XX±0.010	X.X±0.25	REF.
	X.XXX±0.006	X.XX±0.15	X
ANGLES	X°±1°	DIMENSIONS ARE IN INCHES [mm]	CODE ID. NO. 03554
	X.X°±0.5°		

DWG	A	DRAWING NO.	P-UX75-A20-X00XX	REV.	P
SCALE	4/1	WT.	-----	SURF.	-----
			SHEET 1 OF 3		

THIS DOCUMENT CONTAINS PROPRIETARY INFORMATION AND SUCH INFORMATION MAY NOT BE DISCLOSED TO OTHERS FOR ANY PURPOSE OR USED FOR MANUFACTURING PURPOSES WITHOUT WRITTEN PERMISSION FROM AMPHENOL CANADA CORP.

REVISIONS				
SYM	ZONE	ECN, ERN NO.	DATE	APPRD.
K		UPDATED MATERIAL FOR HOUSING	MAY29/07	J.S.
L		UPDATED	APR16/08	A.G.
M		UPDATED	MAR 14/11	J.S.
N		UPDATED	NOV 21/11	J.S.
P		UPDATED	JUL 16/12	J.S.

THIS IS A CAD DRAWING. DO NOT MANUALLY REVISE.



DRAWN	J.SI	DATE	2005/03/08
DESIGNED	J.SI	DATE	2005/03/08
CHECKED	X		

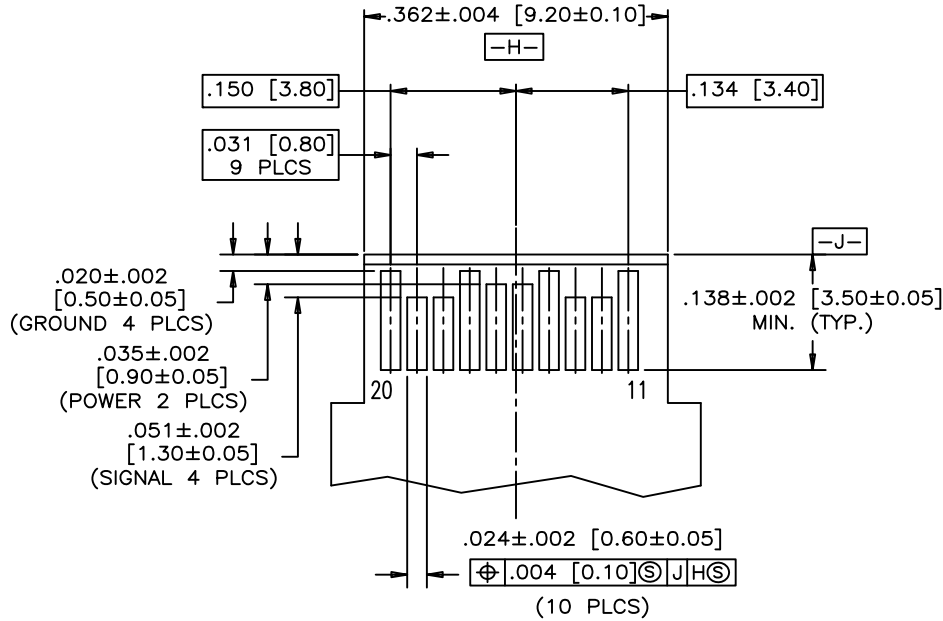
**Amphenol Canada Corp.**  
 TITLE  
 SFP 20 POSITION HIGH SPEED CONNECTOR RECEPTACLE FIXED BOARD, RIGHT ANGLE SMT  
 OPTIONAL PLATING AND LUBRICANT ON MATING

GENERAL TOLERANCES				DWG. APPRD.	DWG. A	DRAWING NO.	REV. P
DECIMALS	X.XX±0.010	X.X±0.25	ENG. REL. NO.			P-UX75-A20-X00XX	
	X.XXX±0.006	X.XX±0.15	REF.	X			
ANGLES	X°±1'		DIMENSIONS ARE IN	INCHES [mm]	CODE ID. NO.	03554	
	X.X°±0.5°		SCALE	2/1	WT.		SURF. ----- SHEET 2 OF 3

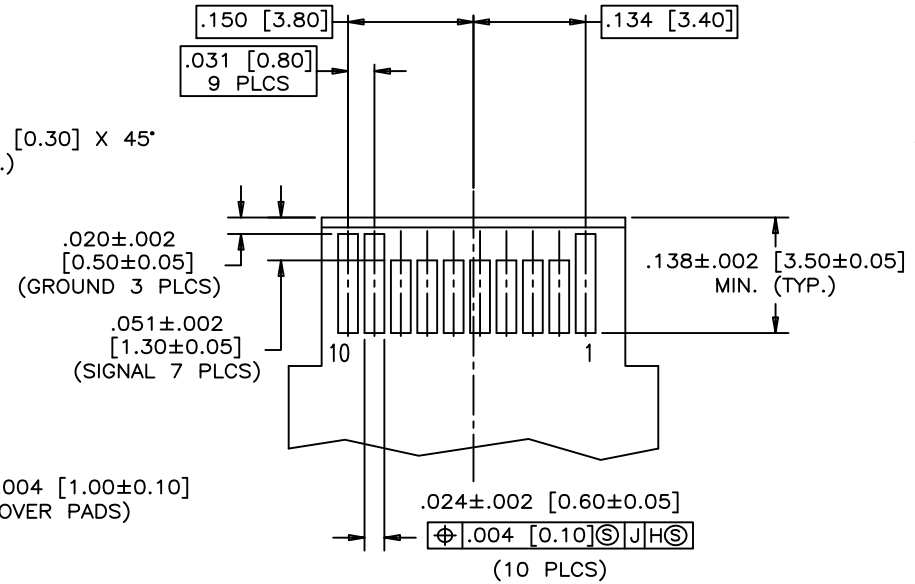
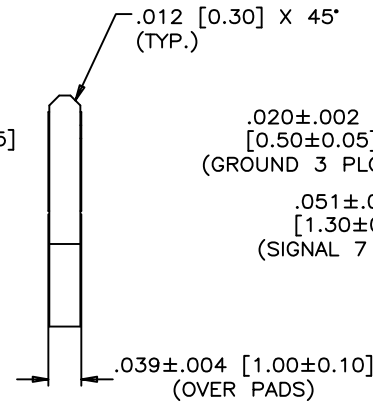
THIS DOCUMENT CONTAINS PROPRIETARY INFORMATION AND SUCH INFORMATION MAY NOT BE DISCLOSED TO OTHERS FOR ANY PURPOSE OR USED FOR MANUFACTURING PURPOSES WITHOUT WRITTEN PERMISSION FROM AMPHENOL CANADA CORP.

REVISIONS				
SYM	ZONE	ECN, ERN NO.	DATE	APPRD.
K		UPDATED MATERIAL FOR HOUSING	MAY29/07	J.S.
L		UPDATED	APR16/08	A.G.
M		UPDATED	MAR 14/11	J.S.
N		UPDATED	NOV 21/11	J.S.
P		UPDATED	JUL 16/12	J.S.

THIS IS A CAD DRAWING. DO NOT MANUALLY REVISE.



TOP VIEW OF BOARD



BOTTOM VIEW OF BOARD

RECOMMENDED LAYOUT DETAIL  
MATING TRANSCEIVER PCB

DRAWN	J.SI	DATE	2005/03/08
DESIGNED	J.SI	DATE	2005/03/08
CHECKED	X		X

Amphenol Canada Corp.

TITLE  
SFP 20 POSITION HIGH SPEED CONNECTOR  
RECEPTACLE FIXED BOARD, RIGHT ANGLE SMT  
OPTIONAL PLATING AND LUBRICANT ON MATING

GENERAL TOLERANCES		DWG. APPRD.
DECIMALS	X.XX±0.010 X.XXX±0.006	ENG. REL. NO. REF. X
ANGLES	X°±1° X.X°±0.5°	DIMENSIONS ARE IN INCHES [mm]

DWG	A	DRAWING NO.	P-UX75-A20-X00XX	REV.	P
SCALE	4:1	WT.	-----	SURF.	-----
			CODE ID. NO.	03554	
			SHEET	3 OF 3	

THIS DOCUMENT CONTAINS PROPRIETARY INFORMATION AND SUCH INFORMATION MAY NOT BE DISCLOSED TO OTHERS FOR ANY PURPOSE OR USED FOR MANUFACTURING PURPOSES WITHOUT WRITTEN PERMISSION FROM AMPHENOL CANADA CORP.