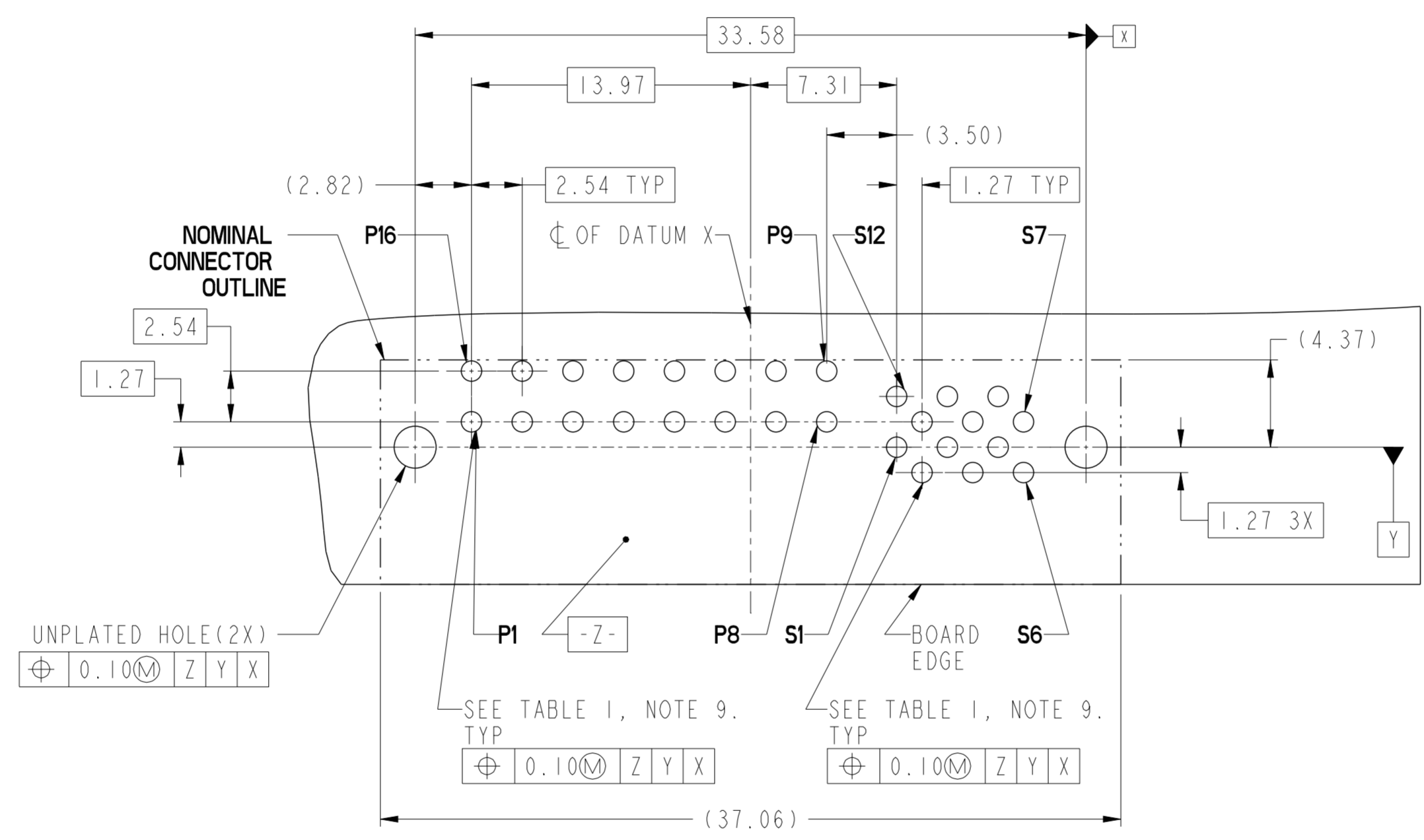


spec ref	-	dr	Wei-Long Zhang	2012/05/04	projection	MM	size	A2	scale	4:1
tolerance std	ISO 406 ISO 1101	eng	Sunny2 Liu	2016/05/06			ecn no	ELX-DG-24036-1		
TOLERANCES UNLESS OTHERWISE SPECIFIED		chr	Terris Liu	2016/05/20			rel level	Released		
surface	linear	0.X	±0.3	appr	Pai-Ming Zheng	2016/05/24	product family	R/A RECT (16P-12S)		
	0.XX	±0.10	Amphenol FCI		title	HIGH POWER CARD EDGE		dwg no	10121002	
	0.XXX	±0.05	cat. no.		Product - Customer Drw		sheet 1 of 4	rev	C	
	angular	0°	±2°	PDS: Rev :C		STATUS:Released		Printed: May 24, 2016		

TABLE 1 (HPCE / SOLDER TAILS)
PLATED THROUGH-HOLE REQUIREMENTS

CONTACT TYPE	TOP LAYER DESCRIPTION	DRILLED HOLE DIAMETER	COPPER THICKNESS	TIN-LEAD THICKNESS	TIN THICKNESS	FINISHED HOLE DIAMETER
		POWER & SIGNAL	TIN-LEAD	1.10-1.16 (1.15 DRILL)	0.025 - 0.050	0.005 - 0.015
	IMMERSION TIN	1.10-1.16 (1.15 DRILL)	0.025 - 0.050	--	0.9 - 1.5um	0.94 - 1.10
	COPPER (SEE NOTE 8)	1.10-1.16 (1.15 DRILL)	0.025 - 0.050	--	--	0.94 - 1.10



RECOMMENDED PCB LAYOUT

Amphenol FCI

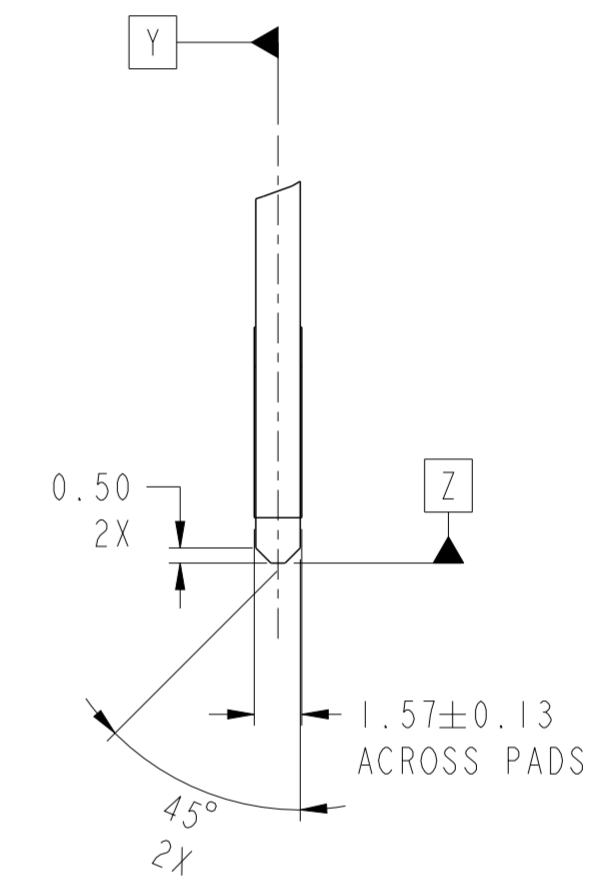
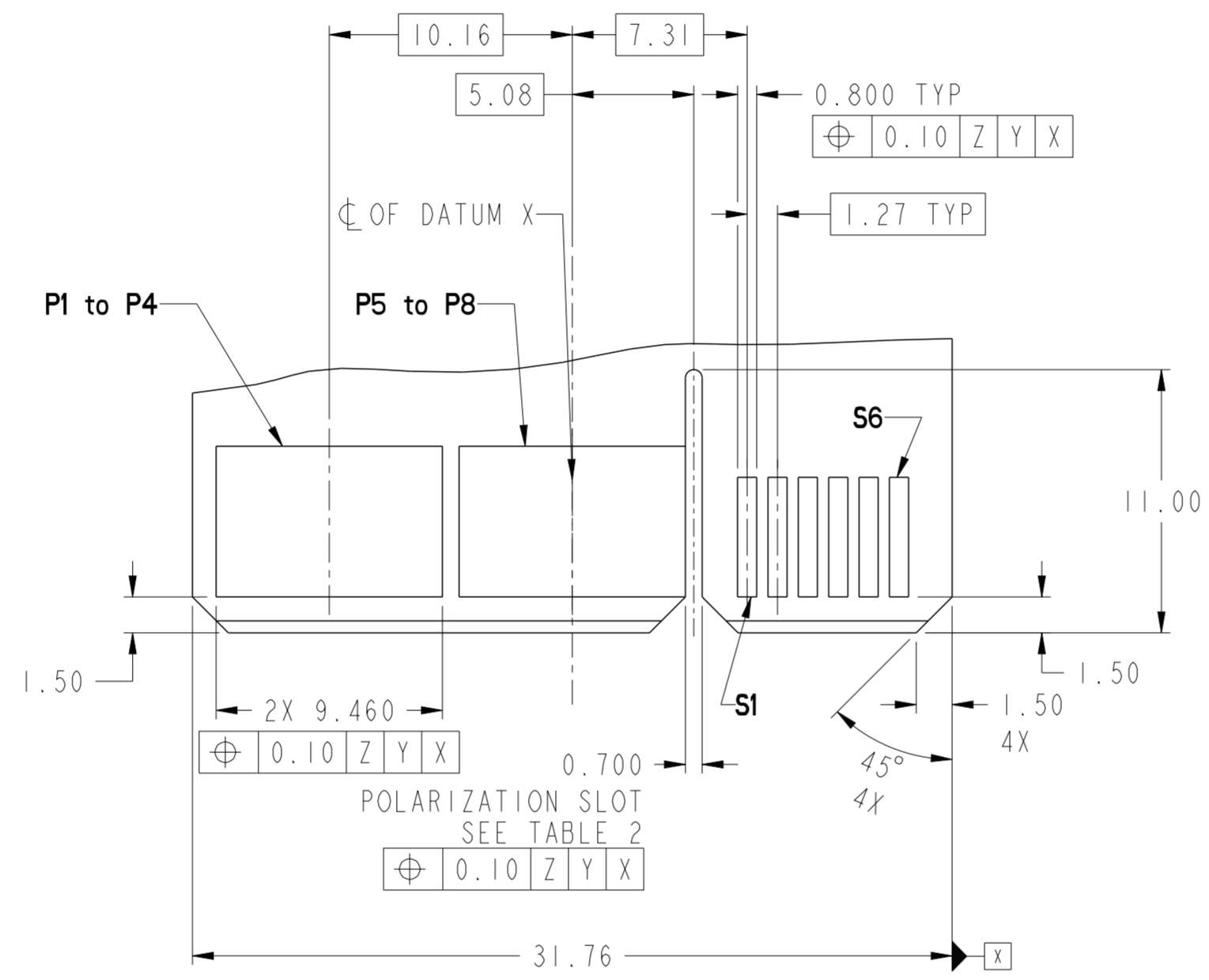
© 2016 AFCI

spec ref	-	dr	Wei-Long Zhang	2012/05/04	projection	MM	size	A2	scale	4:1
tolerance std	ISO 406 ISO 1101	eng	Sunny2 Liu	2016/05/06			ecn no	ELX-DG-24036-1	rel level	Released
TOLERANCES UNLESS OTHERWISE SPECIFIED		chr	Terris Liu	2016/05/20						
surface	linear	0.X	±0.3		R/A RECT (16P-12S) HIGH POWER CARD EDGE	cat. no.	Product - Customer Drw	sheet 2 of 4	rev C	
		0.XX	±0.10							
	angular	0°	±2°							

PDS: Rev :C

STATUS:Released

Printed: May 24, 2016



RECOMMENDED MATING BOARD FOOT PRINT

Amphenol
FCi

© 2016 AFci

spec ref	-	dr	Wei-Long Zhang	2012/05/04	projection	MM	size	A2	scale	4:1	
tolerance std	ISO 406 ISO 1101	eng	Sunny2 Liu	2016/05/06			ecn no	ELX-DG-24036-1	rel level	Released	
TOLERANCES UNLESS OTHERWISE SPECIFIED		chr	Terris Liu	2016/05/20							product family
surface	ISO 1302	appr	Pai-Ming Zheng	2016/05/24			title	R/A RECT (16P-12S) HIGH POWER CARD EDGE		dwg no 10121002	rev C
							cat. no.	Product - Customer Drw		sheet 3 of 4	

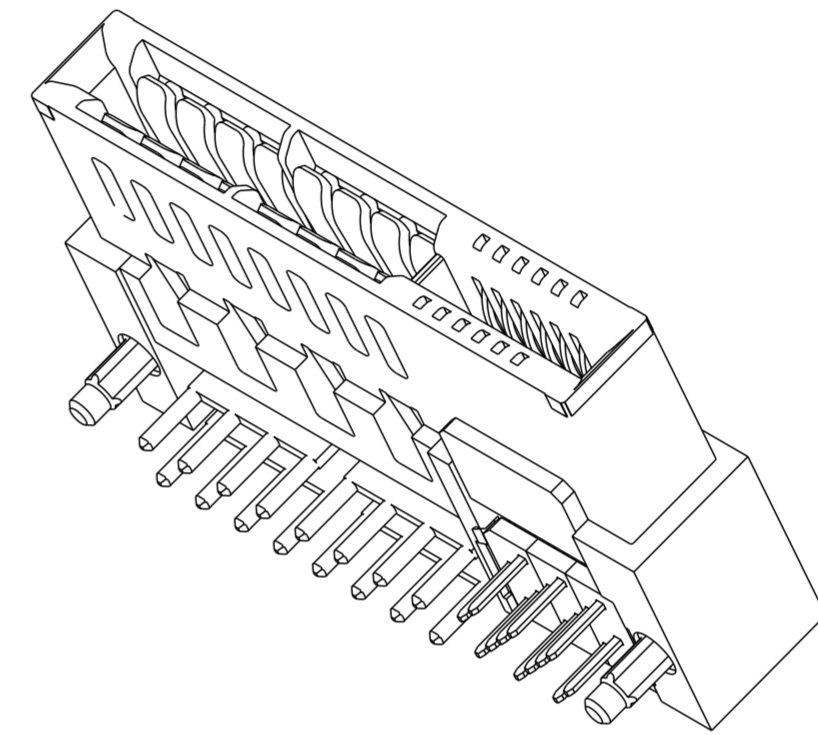
PDS: Rev :C

STATUS:Released

Printed: May 24, 2016

HPCE PART NUMBER (TABLE 2)

PART NUMBER	TAIL TYPE	HOLD-DOWN OPTION	ORIENTATION KEY	DIM "A" TAIL LENGTH OF POWER PINS	DIM "B" TAIL LENGTH OF SIGNAL PINS
10121002-001LF	SOLDER TAIL	NO	YES	3.25±0.25	3.25±0.25
10121002-002LF			NO		
10121002-003LF		YES	YES		
10121002-004LF			NO		
10121002-005LF		NO	YES	2.60±0.25	2.60±0.25
10121002-006LF			NO		
10121002-007LF		YES	YES		
10121002-008LF			NO		
10121002-009LF		YES	NO	2.60±0.25	2.10±0.25



NOTES:

1. CONNECTOR MATERIALS:

HOUSING: HIGH TEMPERATURE THERMAL PLASTIC, BLACK
UL 94V-0 COMPLIANT
CONTACTS: HIGH PERFORMANCE COPPER ALLOY.

2. CONTACT FINISH REF. GS-12-604 SECTION 5.2.

3. PRODUCT SPECIFICATION: GS-12-604.

4. APPLICATION SPECIFICATION: GS-20-128.

5. PRODUCT MARKING ON HOUSING IN AREA SHOWN MEETS AFCI SPECIFICATION: GS-24-007.

6. PACKAGING MEETS FCI SPECIFICATION GS-14-937.

7. HOUSING COMPONENT WILL WITHSTAND EXPOSURE TO 260°C PEAK TEMPERATURE FOR 60 SECONDS IN A CONVECTION, INFRA-RED, OR VAPOR PHASE REFLOW OVEN.

8. COPPER PLATING THICKNESS IN CENTER OF VIA-HOLE CAN BE NO MORE THAN 0.003 LESS THAN OTHER AREAS.

9. ALL HOLE SIZES ARE FINISHED HOLE SIZES.

10. MOUNTING HOLES ARE UNPLATED
Ø 2.18 +/- 0.03 FOR SOLDER TAILS

11. A \triangle SYMBOL WILL BE NEXT TO ANY DIMENSION, VIEW, OR NOTE WHICH HAS BEEN MODIFIED WITH THE CURRENT DRAWING REVISION.

spec ref	-	dr	Wei-Long Zhang	2012/05/04	projection	MM	size	A2	scale	4:1
tolerance std	ISO 406 ISO 1101	eng	Sunny2 Liu	2016/05/06			ecn no	ELX-DG-24036-1		
TOLERANCES UNLESS OTHERWISE SPECIFIED		chr	Terris Liu	2016/05/20			rel level	Released		
surface	linear	appr	Pei-Ming Zheng	2016/05/24	product family	R/A RECT (16P-12S)		cat. no.	10121002	
	angular	Amphenol FCI		HIGH POWER CARD EDGE		dwg no	Product - Customer Drw		rev	C
						sheet 4 of 4				