

RCE-01-G-02.00-BC

**RCE, RCEF SERIES**

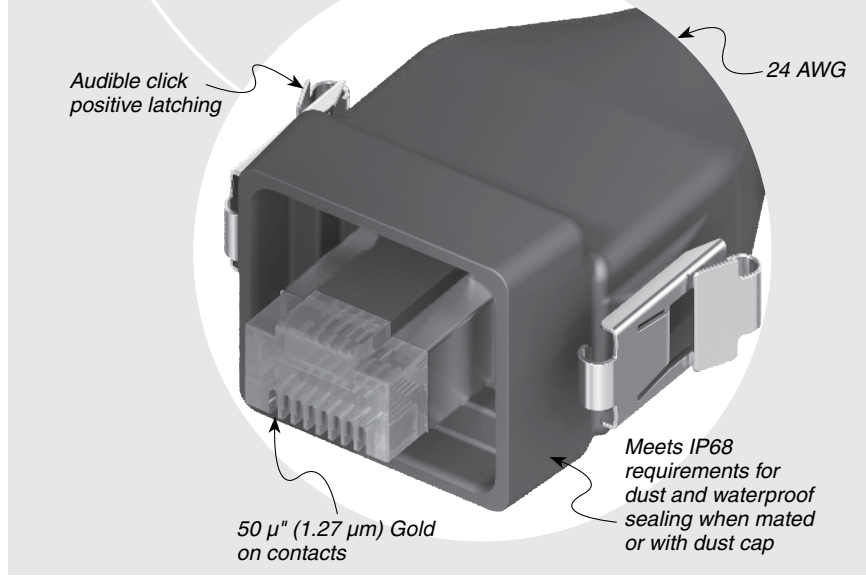
# IP68 SEALED ETHERNET PLUG

**SPECIFICATIONS**

For complete specifications see [www.samtec.com?RCE](http://www.samtec.com?RCE)

- Insulator Material:** Black Liquid Crystal Polymer
- Contact:** Phosphor Bronze
- Operating Temp Range:** -40 °C to +75 °C
- Latch:** BeCu
- Wire:** 24 AWG

Mates with: RPBE-01, RPCE

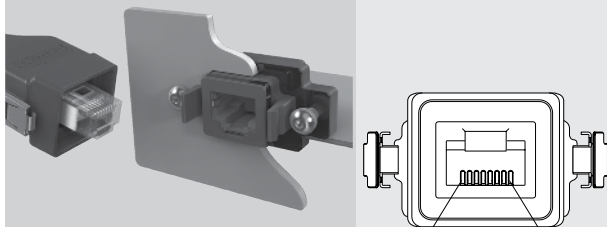


**ALSO AVAILABLE**  
(MOQ Required)

- Other wire lengths

RCE	CABLE STYLE	PLATING	WIRE LENGTH	END OPTION
-01		-G = 50 μm (1.27 μm) Gold on contact	-02.00 = (2 m) 78.74" -03.00 = (3 m) 118.11" -05.00 = (5 m) 196.85" Standard lengths	-D = Double End (Both ends sealed) -BC = Blunt Cut (One end sealed)

**APPLICATION**



**FIELD TERMINATION KIT**

- Ethernet Field Termination Kit available for long cable run and small-opening applications so housings can be customer-installed after the runs are complete.
- RCEF-G-01 Series (For cable outside diameter range of 5.00-5.75 mm)
- RCEF-G-02 Series (For cable outside diameter range of 5.75-6.50 mm)

**DUST CAPS**

STYLE	RCE
-01	DCA-RCE-01-01

**Note:** Meets IP68 requirements for dust and waterproof sealing when mated or with dust cap.

