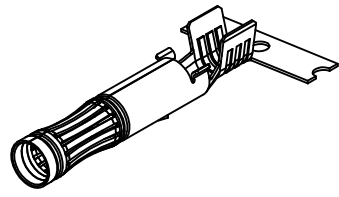
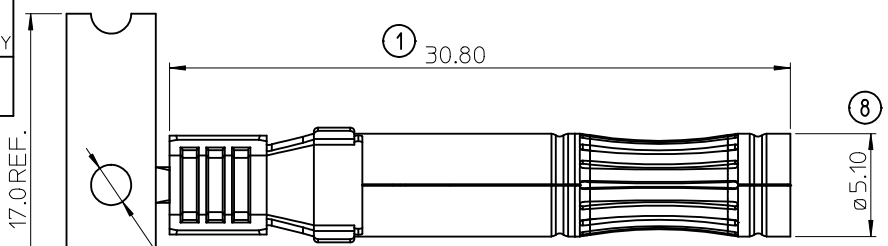
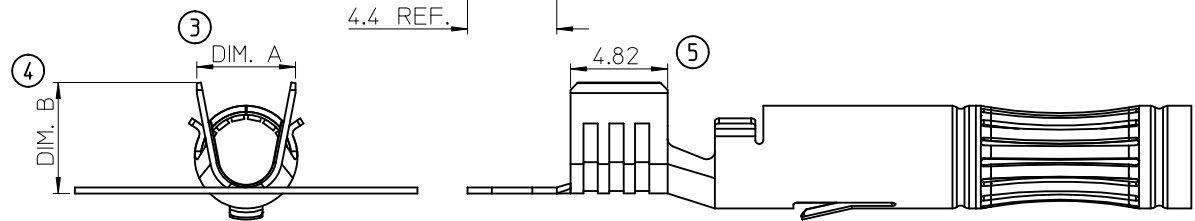


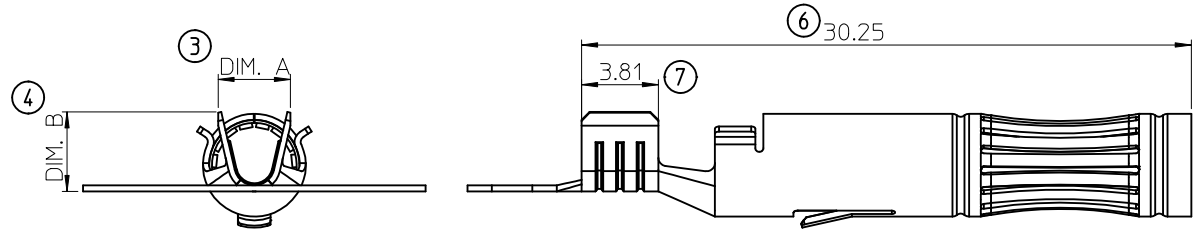
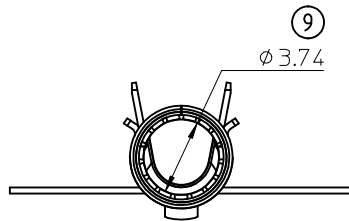
MATERIAL NO. ON STRIP	MATERIAL NO. LOOSE PIECE	CABLE SIZE	DIM "A"	DIM "B"	USE WITH HOUSING ASSY
933030003	933030005	2.5mm ² / 14AWG	3.58	3.94	93301-0101
933030004	933030006	4.0-6.0mm ² / 12-10AWG	4.90	5.51	



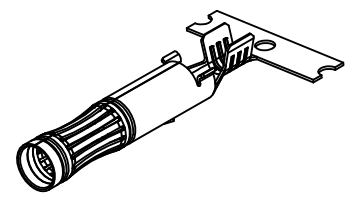
4.0-6.0mm²(12-10AWG)
SCALE 2:1



4.0-6.0mm²(12-10AWG)



2.5mm²(14AWG)
SAME AS 4-6mm²(12-10AWG)
EXCEPT AS NOTED



2.5mm²(14AWG)
SCALE 2:1

NOTES:

1. MATERIAL: COPPER ALLOY 0.30 THK.
2. FINISH: SELECTIVE SILVER OVER NICKEL.
3. TERMINAL FOR USE WITH 93301 SERIES SOCKET HOUSING ASSEMBLY. SEE CHART FOR APPLICABLE PART NUMBERS.
4. PRODUCT SPECIFICATION: PS-93301-001
5. PACKAGING SPEC: PK-93303-001
6. APPLICATION TOOLING AND CRIMP SPECIFICATION: CONSULT FACTORY.
7. PARTS ARE ROHS COMPLIANT.

LAST INSPECTION No USED: 9

ORIGINAL RELEASE EC NO: E2011-0292	DRW:DBYRNES 2011/07/04	QUALITY SYMBOLS ▽=0 ◻=0	GENERAL TOLERANCES (UNLESS SPECIFIED)		DIMENSION STYLE MM ONLY		SCALE 4:1	DESIGN UNITS METRIC	THIRD ANGLE PROJECTION	
	CHKD:SMCGREEVY 2011/08/16		mm	INCH	DRAWN BY DBYRNES	DATE 2011/07/04	TITLE SOLARSPEC SOCKET CONTACT PV SOLAR PANEL MOUNT 2.5MM ϕ & 4-6MM ϕ			
	APPR:EFOLAN 2011/08/26		4 PLACES ± --- ± ---	3 PLACES ± --- ± ---	CHECKED BY SMCGREEVY	DATE 2011/08/16	MOLEX INCORPORATED			
	1 PLACE ± 0.20 ± ---		ANGULAR ± 2 °		APPROVED BY EFOLAN	DATE 2011/08/26	MATERIAL NO.		DOCUMENT NO.	SHEET NO.
1	REV	DRAFT WHERE APPLICABLE MUST REMAIN WITHIN DIMENSIONS		SEE CHART		SD-93303-001		1 OF 1		