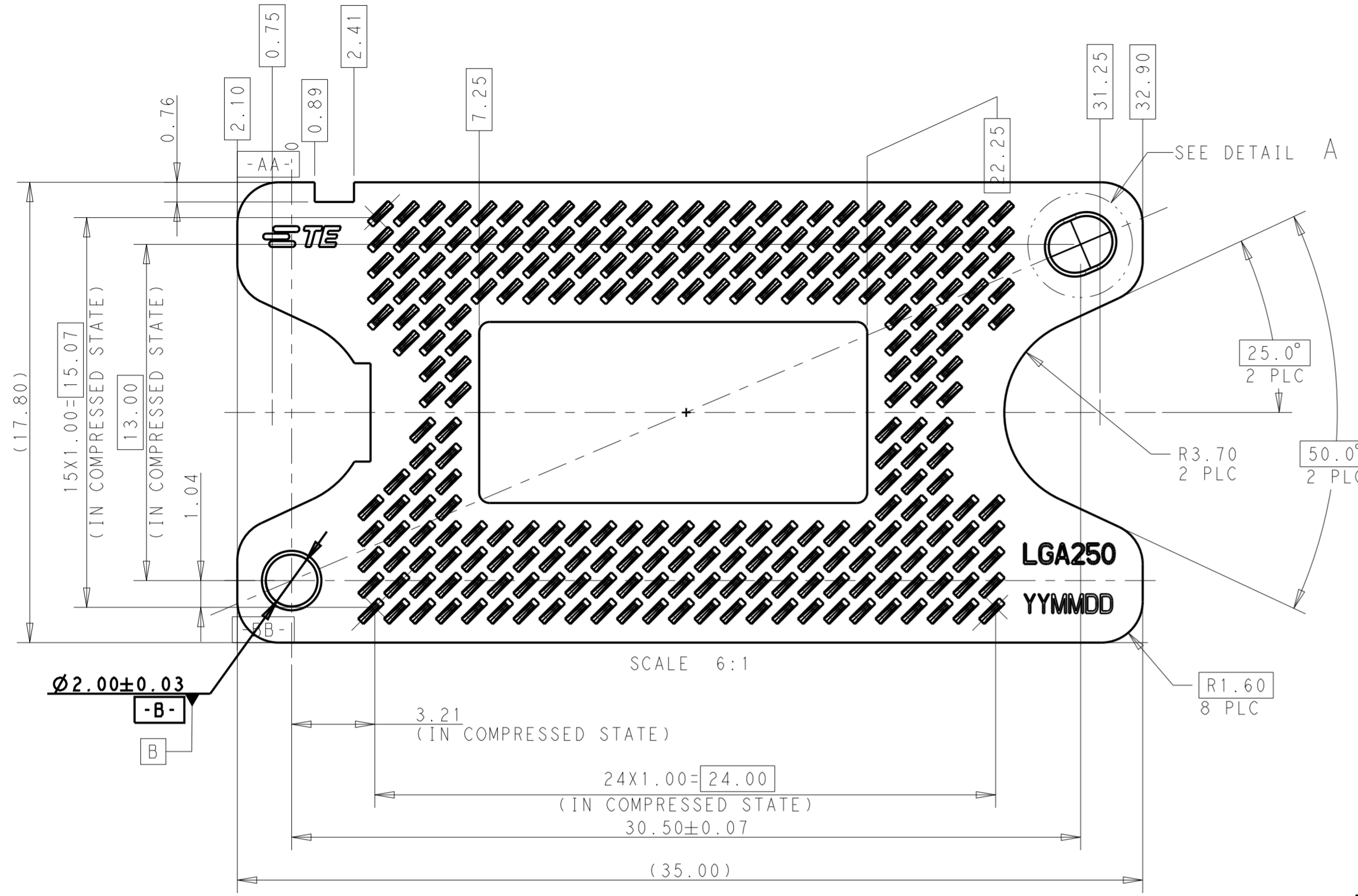


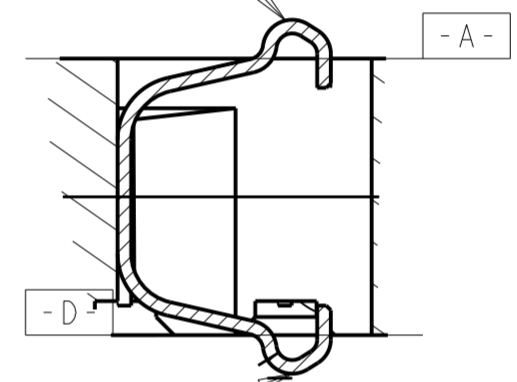
THIS DRAWING IS UNPUBLISHED. RELEASED FOR PUBLICATION 20  
 © COPYRIGHT 20 BY - ALL RIGHTS RESERVED.

REVISIONS				
P	LTR	DESCRIPTION	DATE	APVD
6		IMPROVE THE HOUSING PIN HOLES	30MAY2019	T.Z B.L



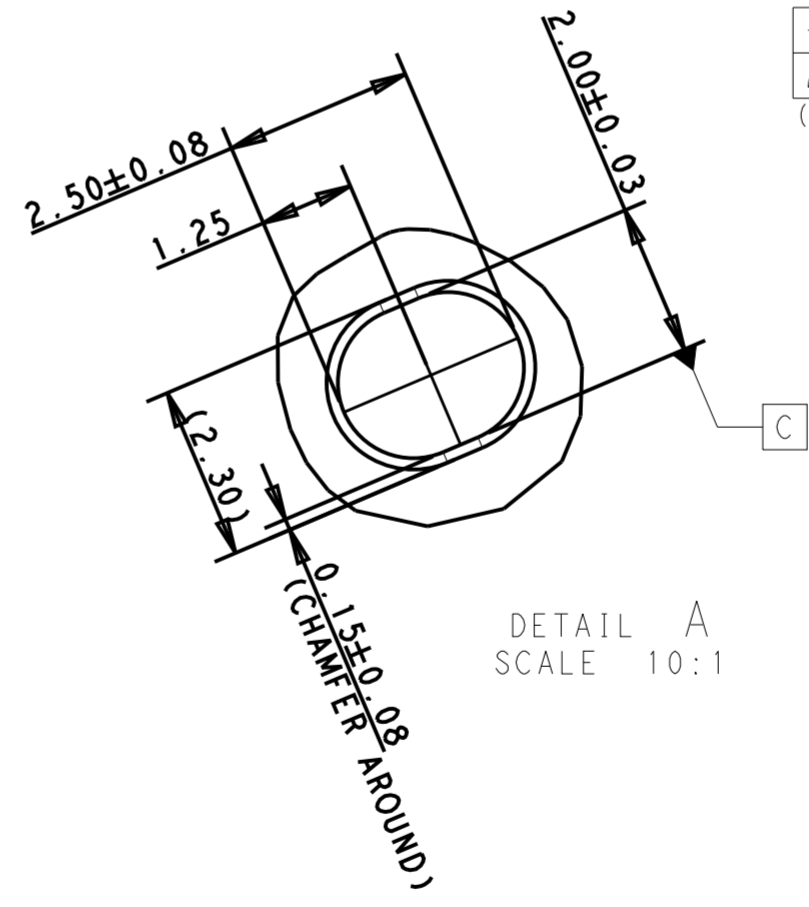
- 1. MATERIAL
  - 1 HOUSING : HIGH TEMP, THERMO-PLASTIC, UL94V-0, BLACK
  - 2 CONTACT : COPPER ALLOY
- 2. FINISH
  - CONTACT : 3u" Au PL. ON CONTACT AREA
  - Ni UNDER PL. 50u" MIN. OVER ALL.
- 3. THICKNESS: 1.219mm AFTER COMPRESSION.
- 4. DIMENSION SHALL BE INTERPRETED PER ASME Y14.5M-1994.
- 5. RECOMMENED CONNECTOR LOADING FORCE: 10Kgf Min.

⊕	∅0.15	A	B	C
⌒	0.15	(250X)		
(DMD CONTACT SIDE)				

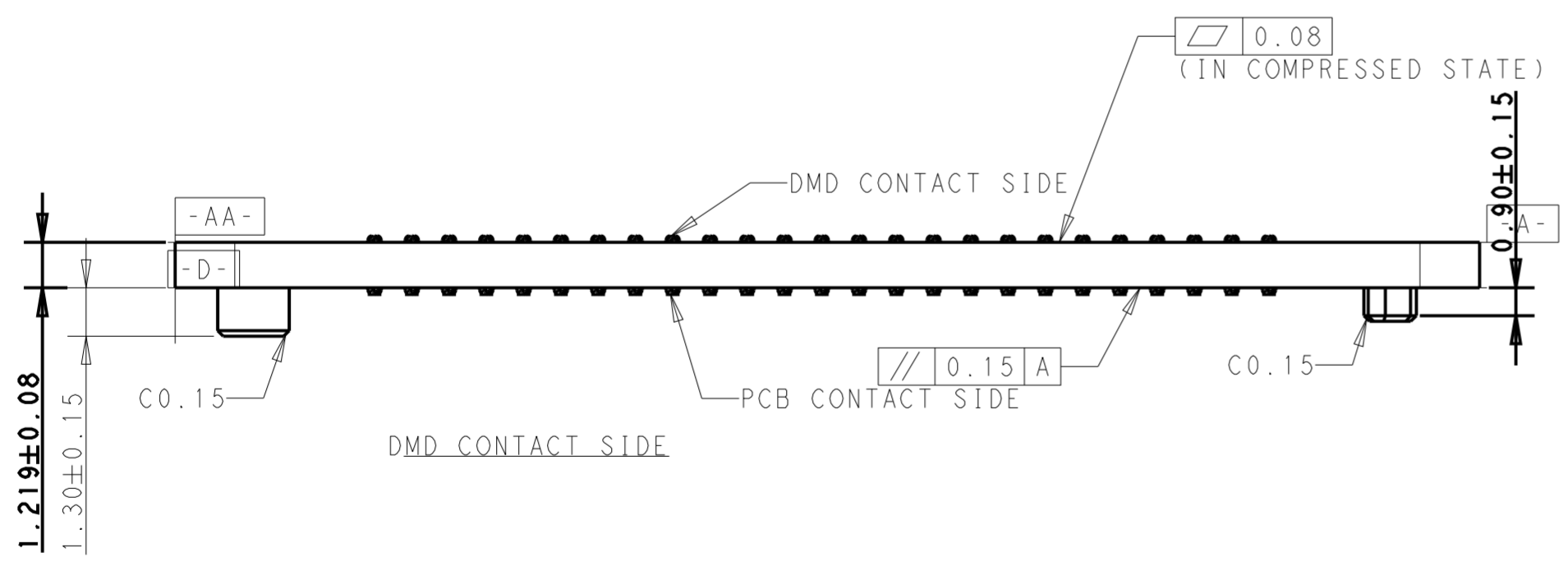


⊕	∅0.15	D	E	F
⌒	0.15	(250X)		
(PCB CONTACT SIDE)				

CONTACT CROSS SECTION DETAIL



DETAIL A  
SCALE 10:1



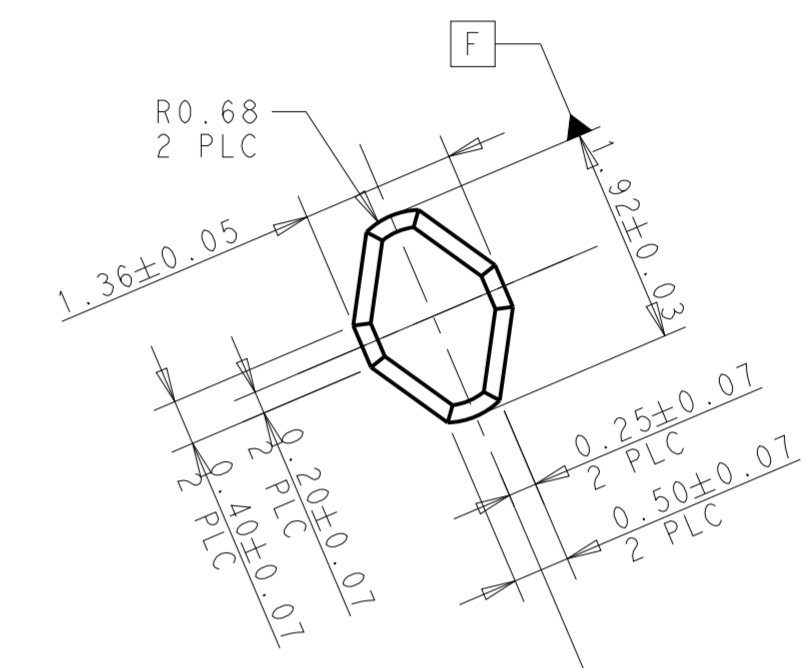
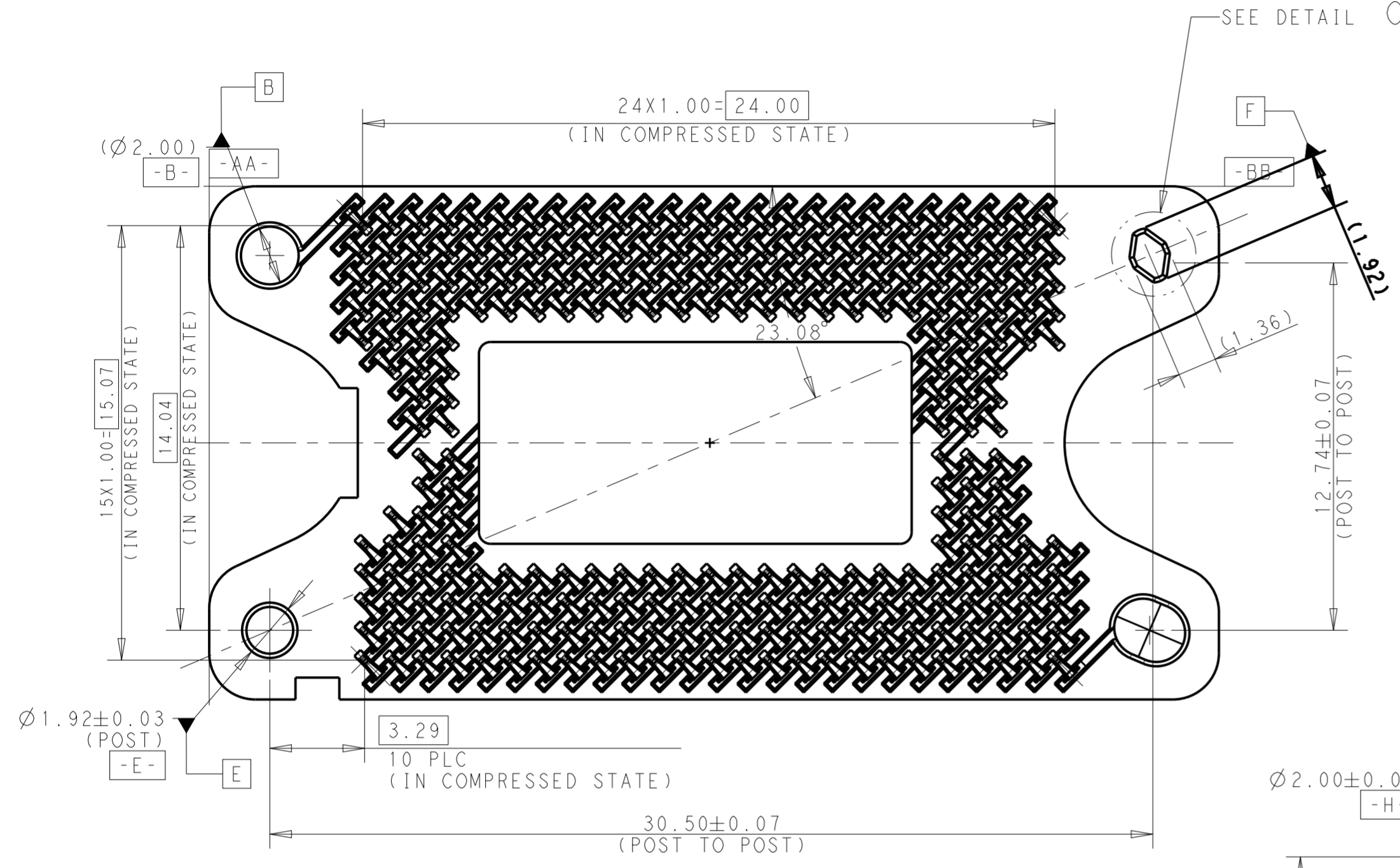
THIS PRINT IS  
**PRELIMINARY**  
 UNQUALIFIED PRODUCT  
 CONTACT PRODUCT ENGINEERING  
 BEFORE USING THIS PRINT

2350616-1	1
PART NO.	ITEM

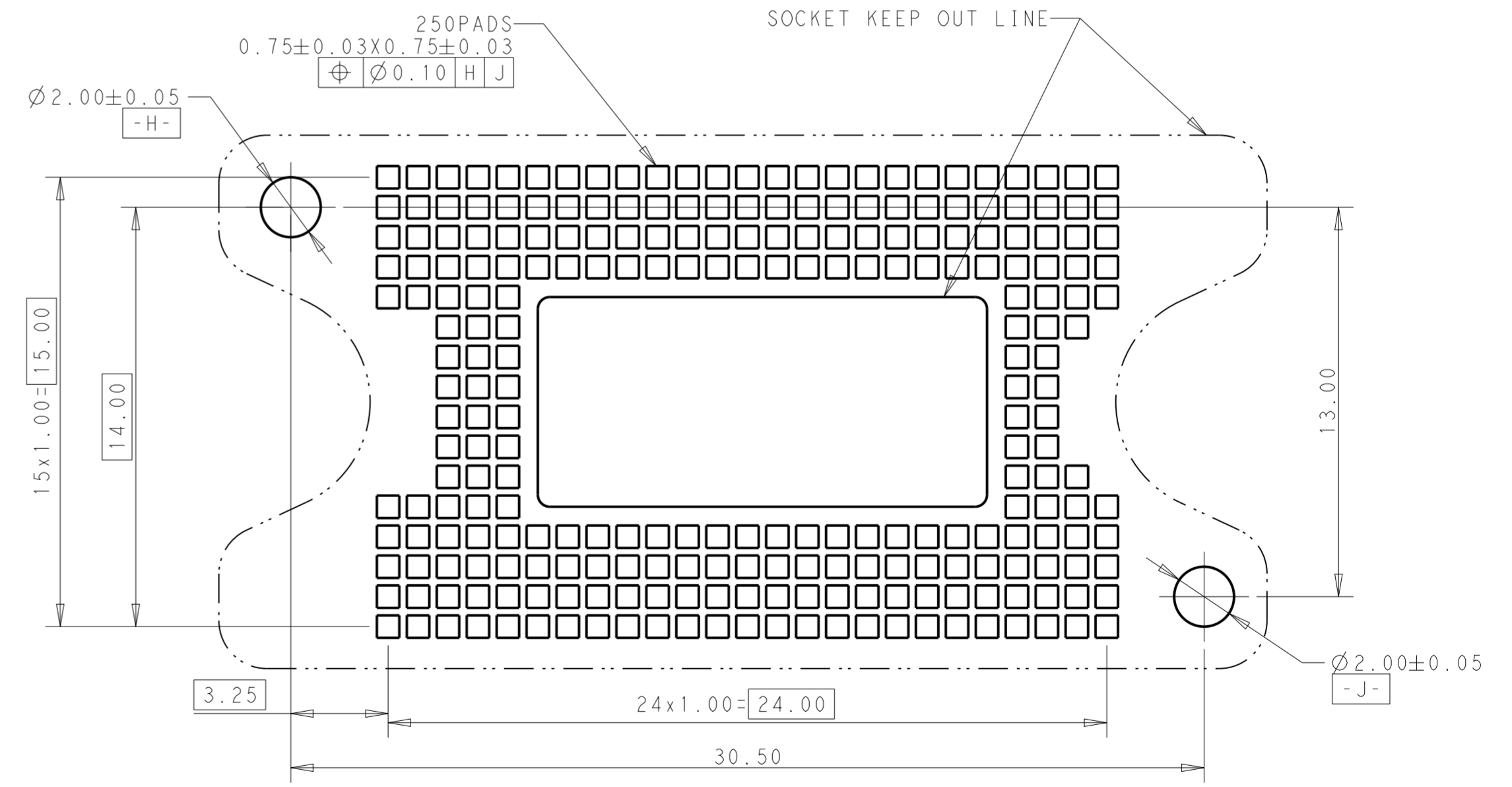
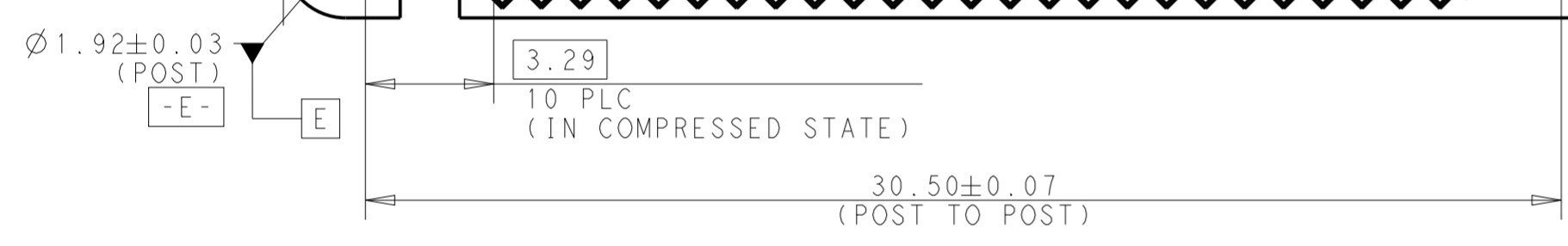
THIS DRAWING IS A CONTROLLED DOCUMENT.		DWN T.Z	10 JAN 2019	<b>STE</b> TE Connectivity																					
		CHK S.L	10 JAN 2019																						
		APVD S.L	10 JAN 2019																						
DIMENSIONS: mm		TOLERANCES UNLESS OTHERWISE SPECIFIED:		NAME CUSTOMER DRAWING DMD SOCKET LGA250																					
<table border="0"> <tr> <td>0 PLC</td> <td>±</td> <td></td> </tr> <tr> <td>1 PLC</td> <td>±</td> <td></td> </tr> <tr> <td>2 PLC</td> <td>±0.10</td> <td></td> </tr> <tr> <td>3 PLC</td> <td>±0.05</td> <td></td> </tr> <tr> <td>4 PLC</td> <td>±</td> <td></td> </tr> <tr> <td>ANGLES</td> <td>±1</td> <td></td> </tr> <tr> <td>FINISH</td> <td></td> <td></td> </tr> </table>		0 PLC	±		1 PLC	±		2 PLC	±0.10		3 PLC	±0.05		4 PLC	±		ANGLES	±1		FINISH			PRODUCT SPEC -		SIZE A200779
0 PLC	±																								
1 PLC	±																								
2 PLC	±0.10																								
3 PLC	±0.05																								
4 PLC	±																								
ANGLES	±1																								
FINISH																									
MATERIAL -		APPLICATION SPEC -		CAGE CODE C-2350616																					
		WEIGHT -		DRAWING NO -																					
		CUSTOMER DRAWING		RESTRICTED TO -																					
		SCALE 2:1		SHEET 1 OF 2 REV A1																					

THIS DRAWING IS UNPUBLISHED. RELEASED FOR PUBLICATION 20  
 (C) COPYRIGHT 20 BY - ALL RIGHTS RESERVED.

REVISIONS				
P	LTR	DESCRIPTION	DATE	APVD
-	-	SEE SHEET 1	-	-



DETAIL C  
SCALE 15:1



THIS PRINT IS  
**PRELIMINARY**  
 UNQUALIFIED PRODUCT  
 CONTACT PRODUCT ENGINEERING  
 BEFORE USING THIS PRINT

THIS DRAWING IS A CONTROLLED DOCUMENT.		DWN T.Z	10 JAN 2019	 TE Connectivity
DIMENSIONS: mm		CHK S.L	10 JAN 2019	
TOLERANCES UNLESS OTHERWISE SPECIFIED:		APVD S.L	10 JAN 2019	
0 PLC ± 1 PLC ± 2 PLC ±0.10 3 PLC ±0.05 4 PLC ± ANGLES ±1 FINISH -		PRODUCT SPEC	-	
MATERIAL		APPLICATION SPEC	-	NAME CUSTOMER DRAWING DMD SOCKET LGA250
		WEIGHT	-	SIZE CAGE CODE DRAWING NO A200779 C-2350616
		CUSTOMER DRAWING	SCALE 2:1	RESTRICTED TO
			SHEET 2 OF 2	REV A1