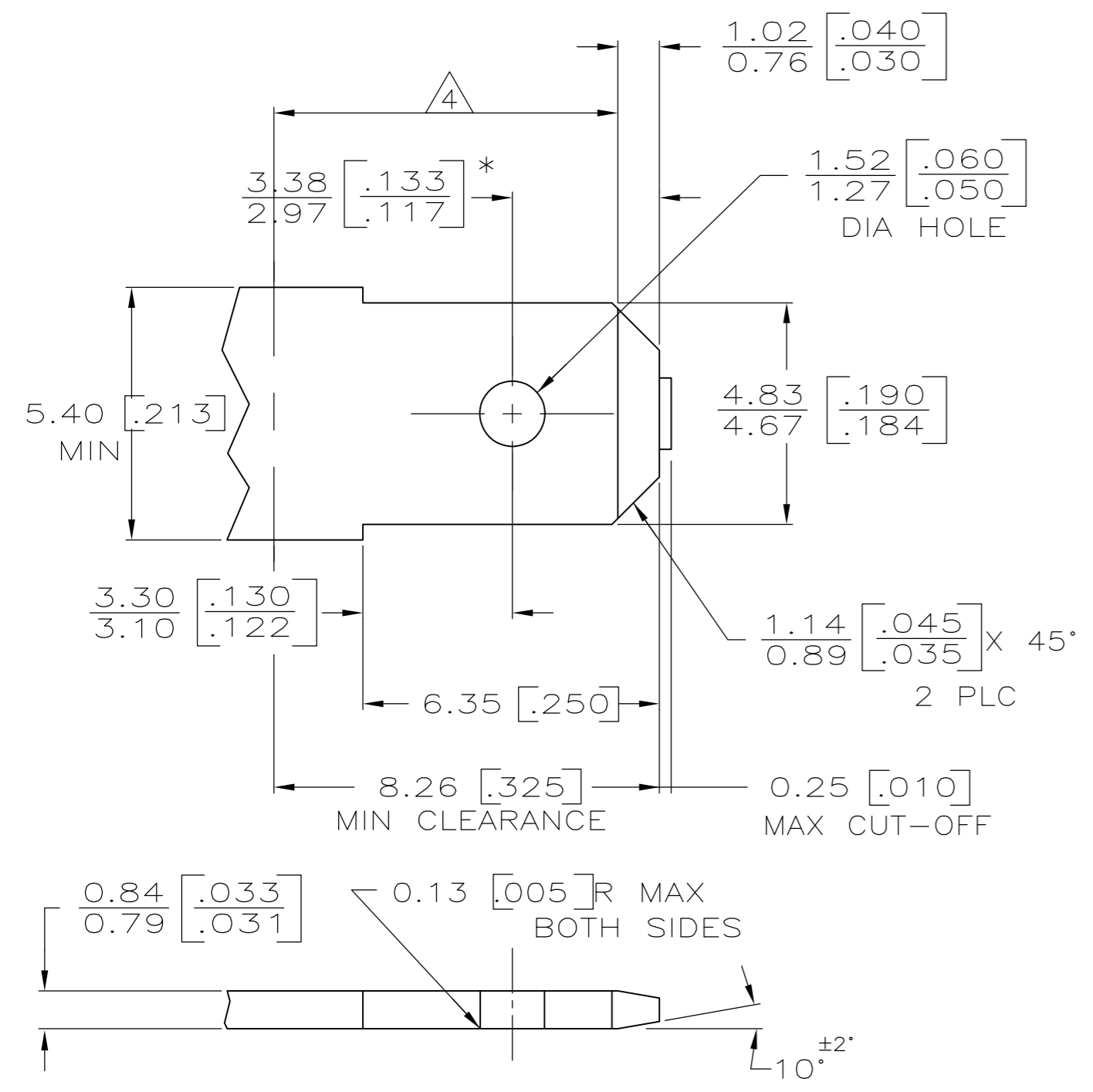
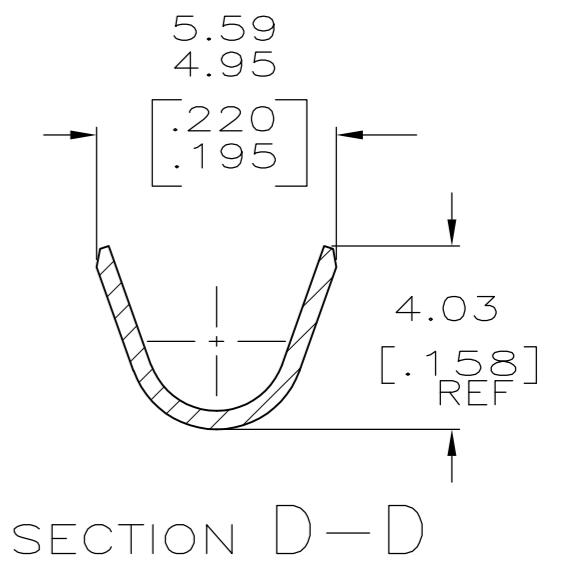
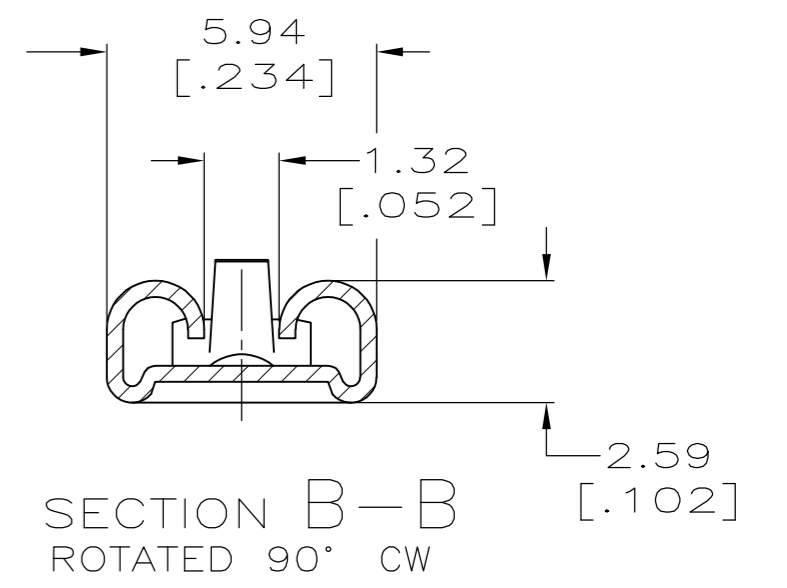
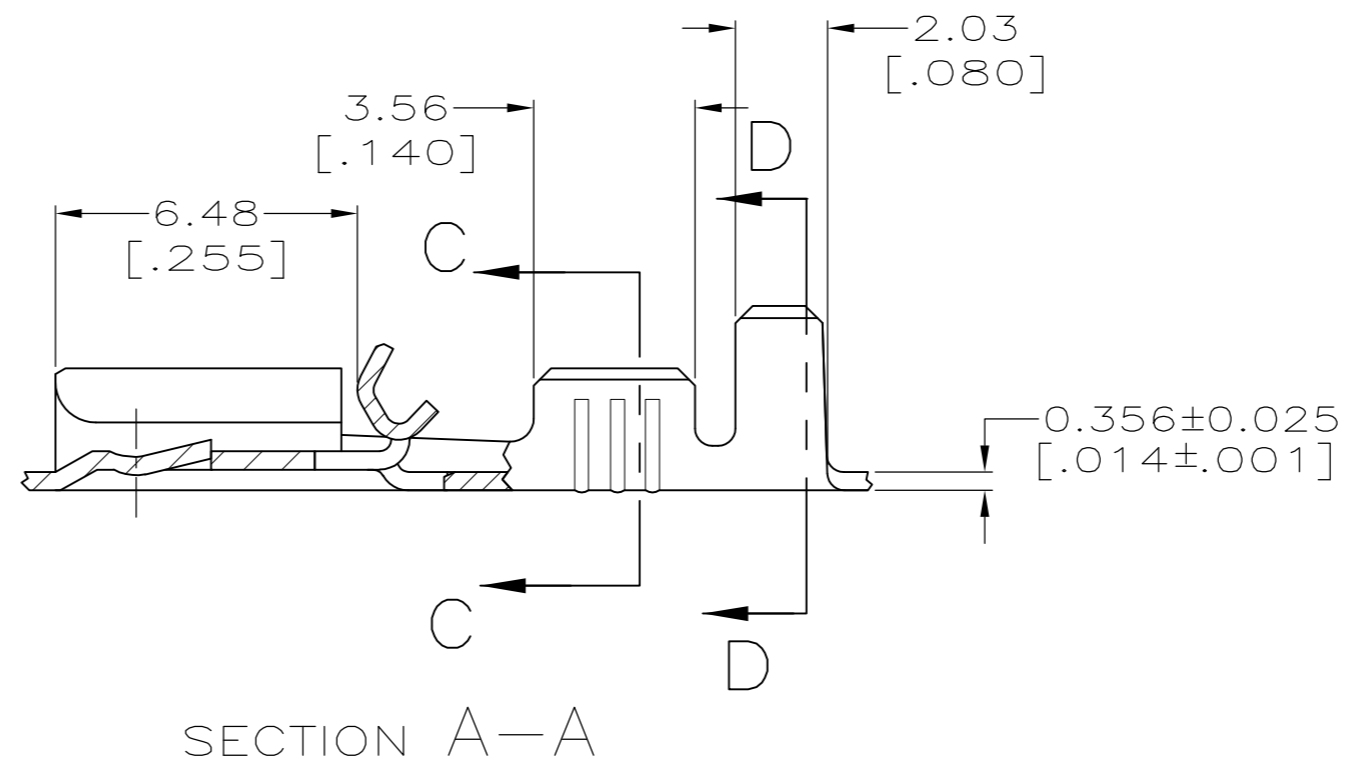
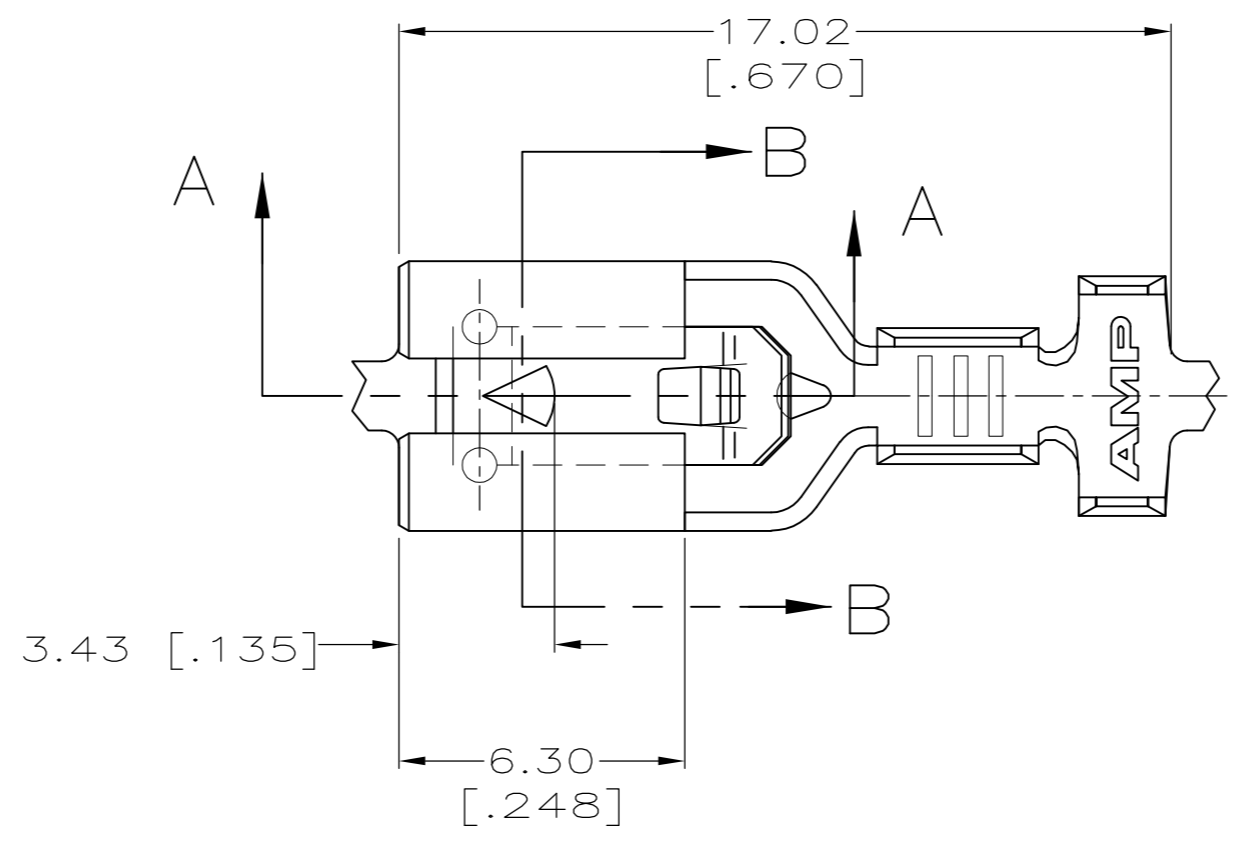


REVISIONS				
P	LTR	DESCRIPTION	DATE	APVD
F1		REVISED PER ECR-15-016360	10MAR2016	NK LP

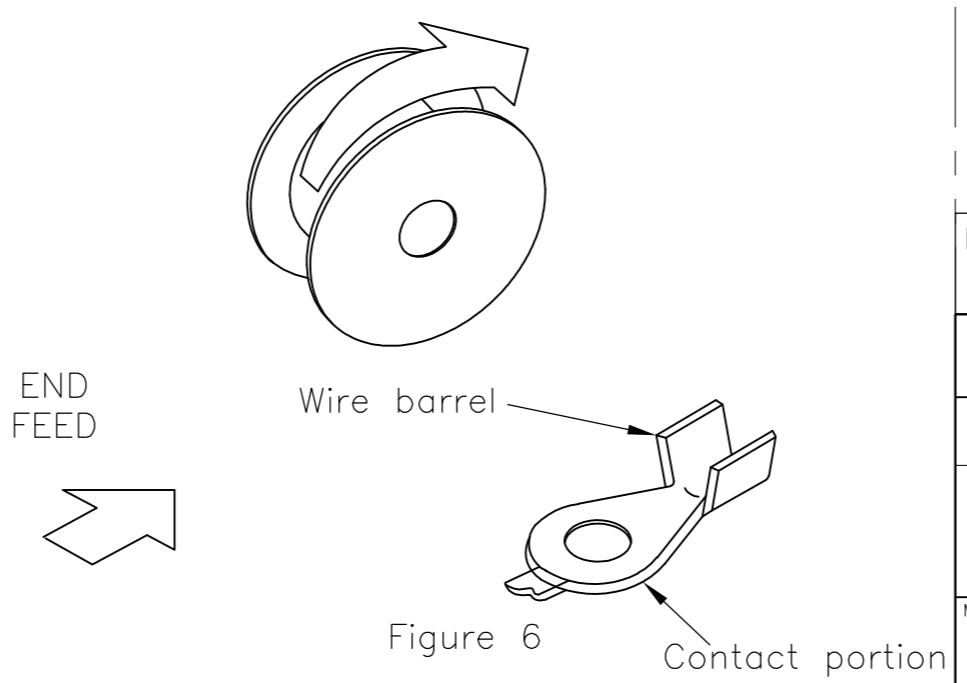
SUGGESTED MATING TAB



- MATL: #2 HARD BRASS OR NICKEL PLATE STEEL.
 - NO BURRS PERMISSIBLE AT HOLE.
 - TIN PLATING IS REQUIRED ON BRASS WHEN TERMINAL TEMPERATURE IS OVER 225°F
 - MUST BE FLAT WITHIN 0.076 [.003] OVER THIS LENGTH.
 - HOLE MUST BE SYMMETRICAL ABOUT TAB ϕ WITHIN 0.076 [.003].
- * TO BE USED ONLY WHEN SHOULDER IS ELIMINATED.



This specification lists various figures which indicate the direction a product comes off the top of the reel.



REELING
107-3 FIG.6

THIS DRAWING IS A CONTROLLED DOCUMENT.		DWN	JR RUTH	6/26/98
DIMENSIONS: mm [INCHES]		CHK	MS FEHER	6/26/98
TOLERANCES UNLESS OTHERWISE SPECIFIED:		APVD	E HOWARD	6/26/98
0 PLC ± -		PRODUCT SPEC	-	
1 PLC ± -		APPLICATION SPEC	-	
2 PLC ± 0.25 [.010]		WEIGHT	0	
3 PLC ± -		CUSTOMER DRAWING	-	
4 PLC ± -		SCALE	6:1	
ANGLES ± -		SHEET	1 of 1	
FINISH		REV	F1	
SEE TABLE				

TIN	1217097-2
OBsolete	-1217097-1-
FINISH	PART NO.
TE TE Connectivity	
RECEPTACLE, POSITIVE-LOCK, MARK III, 4.75 [.187] SERIES	
SIZE	A2
CAGE CODE	00779
DRAWING NO	C=1217097
RESTRICTED TO	-