

**MATERIAL**

Polyamide based (PA) technopolymer, black colour.

**STANDARD EXECUTIONS**

- **RLT-MB**: bracket.
- **RLT-MS**: support.
- **RLT-MS-A12**: support with connecting rod and M6 cylindrical head screw with hexagon socket.

**FEATURES AND APPLICATIONS**

The bracket and the support facilitate the mounting of ELEROLL roller tracks on machines and other supporting structures.

**MOUNTING**

The bracket and the support are equipped with dowels that are housed in the slots in the lower side of RLT-AL aluminum profiles (Fig. 1) and in special counterseats on the same support for the combination of more supporting elements (Fig. 2).

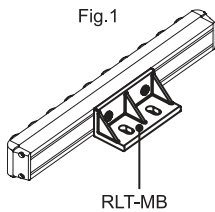
RLT-MB bracket is compatible with profiles having a slot of 8 mm width (Fig.4).

The bracket and the support allow to mount ELEROLL roller tracks in different configurations. Some examples are shown in Fig.1, Fig.2 and Fig.3.



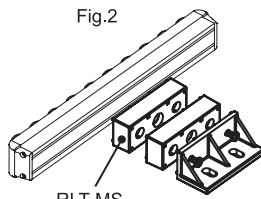
FMM design

ele:roll®

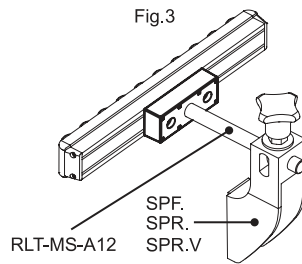


RLT-MB

RLT-MB



RLT-MS



RLT-MS-A12  
SPF.  
SPR.  
SPR.V

RLT-MS

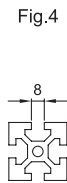
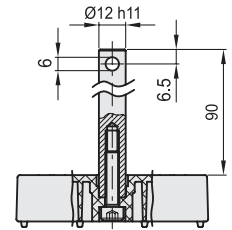
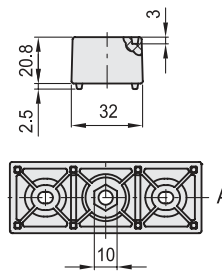
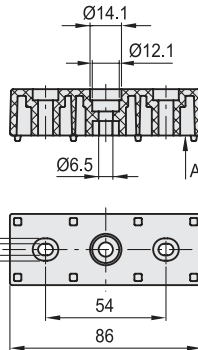
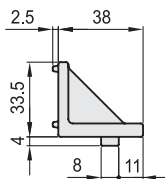
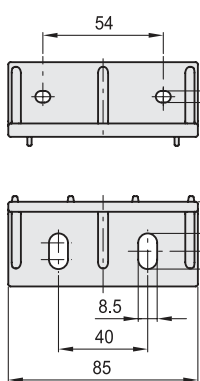


Fig.4

RLT-MS-A12



**RLT-MB**

METRIC

Code	Description	⚖
429841	RLT-MB	35

**RLT-MS**

METRIC

Code	Description	⚖
429846	RLT-MS	49

**RLT-MS-A12**

METRIC

Code	Description	⚖
429848	RLT-MS-A12	145



Machine elements