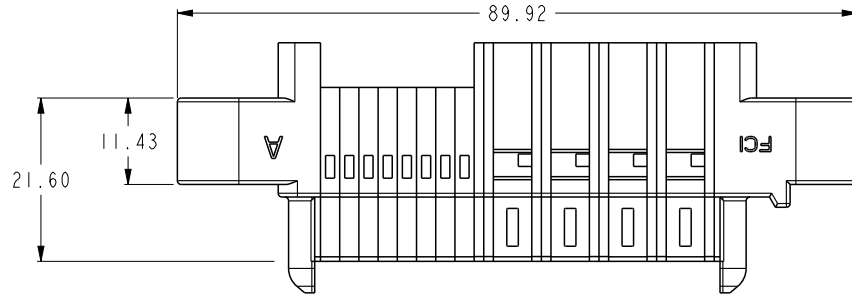
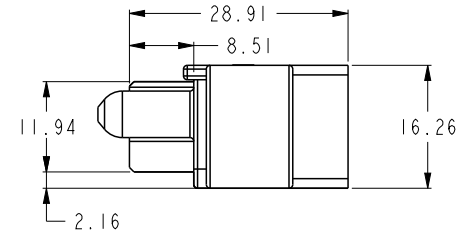
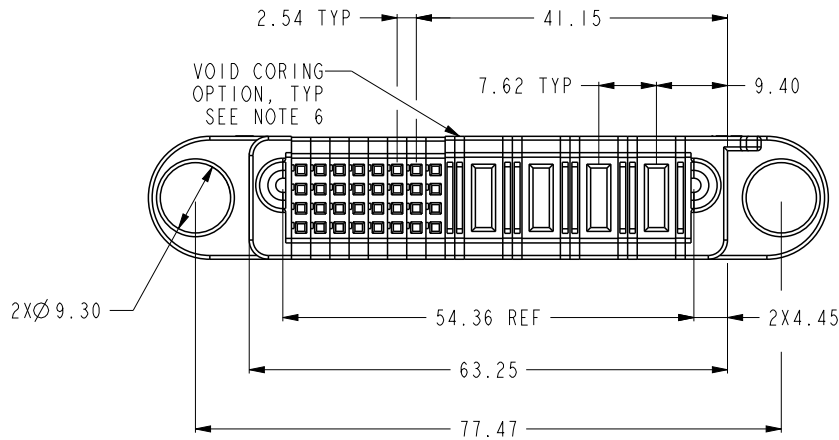


| PART NUMBER | ROW | E | SIGNAL | | | | | | | | POWER | | | | E | | | |
|----------------|-----|---|--------|---|---|---|---|---|---|---|-------|-----|-----|----|---|--|--|--|
| | | | 8 | 7 | 6 | 5 | 4 | 3 | 2 | 1 | 4 | 3 | 2 | 1 | | | | |
| 10128858-084LF | D | | X | S | S | X | X | X | X | X | | | | | | | | |
| | C | | X | S | S | X | X | X | X | X | | | | | | | | |
| | B | | X | X | S | S | S | S | S | X | STD | STD | STD | FM | | | | |
| | A | | X | S | S | S | S | S | S | X | | | | | | | | |

| CONTACT WIRE TABLE | |
|--------------------|------------|
| CONTACT PITCH | WIRE GAUGE |
| 7.62 | 8AWG |
| 2.54 | 22-26AWG |

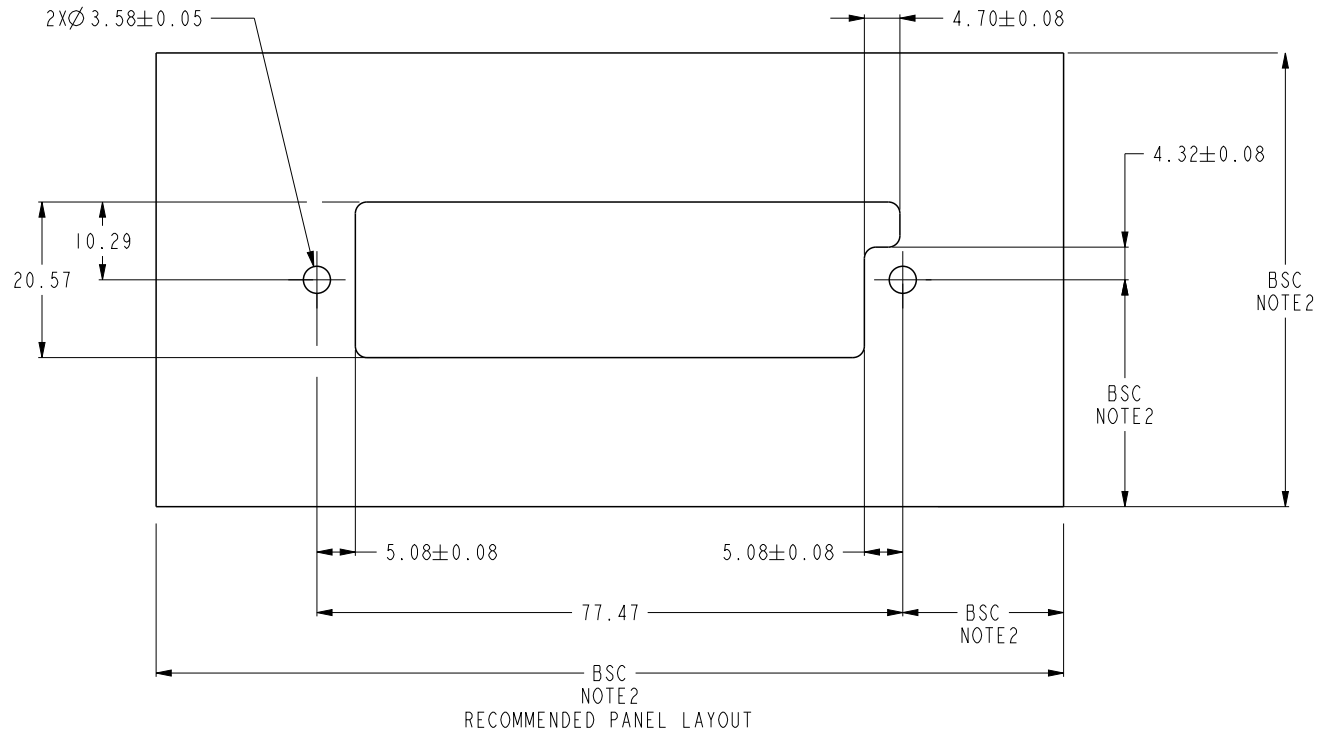


| CONTACT TABLE | |
|---------------|--------------------------|
| CODE | DESCRIPTION |
| FM | FIRST MATE POWER CONTACT |
| STD | STANDARD POWER CONTACT |
| S | SIGNAL CONTACT |
| X | OMITTED |



| | | | | | | | | | | | |
|---------------|---------------------------------------|-----------------|----------------|------------|--|----|--------------|----|-----------|----------|-------|
| spec ref | * | dr | Sunny2 Liu | 2017/04/28 | projection | mm | size | A4 | scale | 1:1 | |
| tolerance std | TOLERANCES UNLESS OTHERWISE SPECIFIED | eng | Sunny2 Liu | 2017/05/12 | | ←→ | ecn no | - | rel level | Released | |
| ISO 406 | | chr | Cheng-Ling Tao | 2017/05/12 | | | | | | | |
| ISO 1101 | | appr | Pei-Ming Zheng | 2017/05/12 | product family | - | | | | | |
| surface | linear | Amphenol FCi | | | 4ACP + 32S PMT PwrBlade+ Cable Receptacle Housing | | 10128858-084 | | rev A | | |
| | 0.X | | | | | | | | | | ±0.5 |
| | 0.XX | | | | | | | | | | ±0.25 |
| | 0.XXX | ±0.10 | cat. no. | | Product - Customer Drw | | sheet 1 of 2 | | | | |
| ISO 1302 | angular | 0° | ±2° | | | | | | | | |

- NOTES
- PANEL THICKNESS: 0.79-2.54mm
 - DATUM AND BASIC DIMENSIONS WERE ESTABLISHED BY CUSTOMER.
 - APPLICABLE COMPONENTS
 - APPLICABLE HIGH POWER CRIMP CONTACT: 10135689-*
 - APPLICABLE LOW POWER CRIMP CONTACT: 10135690-*
 - APPLICABLE CONTACT SECONDARY LOCK FOR HIGH POWER : 10073097-DGC004LF
 - APPLICABLE SIGNAL CONTACT: 76347-DGC302LF
 - PRODUCT SPEC: GS-12-1267
 - APPLICATION SPEC: GS-20-0435
 - THE VOID CORING IN BETWEEN POWER MODULES, SIGNAL MODULES AND END MODULES ARE OPTIONAL AND THE SHAPE MAY BE DIFFERENT FOR OPTIMIZE THE MOLDING PROCESS. THE VOID CORING WILL NOT EFFECT TO PRODUCT FUNCTION.



| | | | | | | | | | | | | |
|---------------|---------|---------------------------------------|-------|-----------------|----------------|------------------------------------|----------------|--------|----------------|------------------------|-------|--------------|
| spec ref | | * | | dr | Sunny2 Liu | 2017/04/28 | projection | mm | size | A4 | scale | 1:1 |
| tolerance std | | TOLERANCES UNLESS OTHERWISE SPECIFIED | | eng | Sunny2 Liu | 2017/05/12 | | | ecn no | - | | |
| ISO 406 | | | | chr | Cheng-Ling Tao | 2017/05/12 | | | | rel level | | Released |
| ISO 1101 | | | | appr | Pei-Ming Zheng | 2017/05/12 | | | product family | | - | |
| surface | linear | 0.X | ±0.5 | Amphenol FCi | title | 4ACP + 32S PMT | | dwg no | 10128858-084 | | rev | A |
| | | 0.XX | ±0.25 | | | PwrBlade+ Cable Receptacle Housing | | | | | | |
| | | 0.XXX | ±0.10 | | | cat. no. | | | - | Product - Customer Drw | | sheet 2 of 2 |
| ISO 1302 | angular | 0° | ±2° | | | | | | | | | |