

PRODUCT NO.  
10124712-002C-TRLF

A

B

C

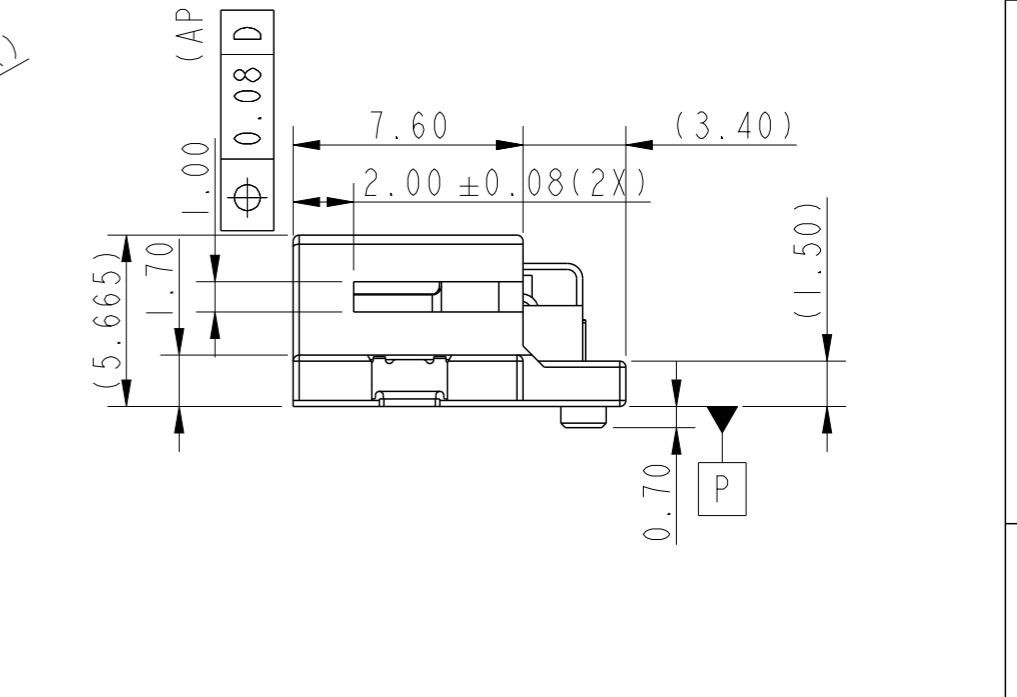
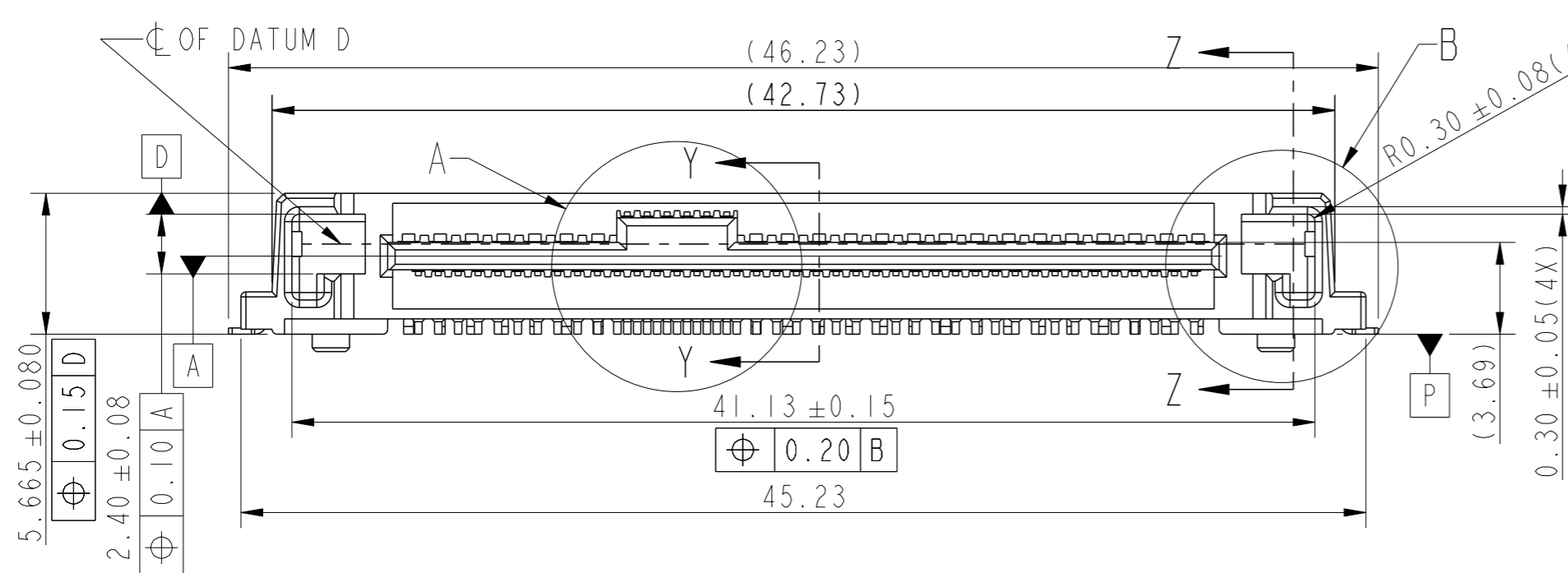
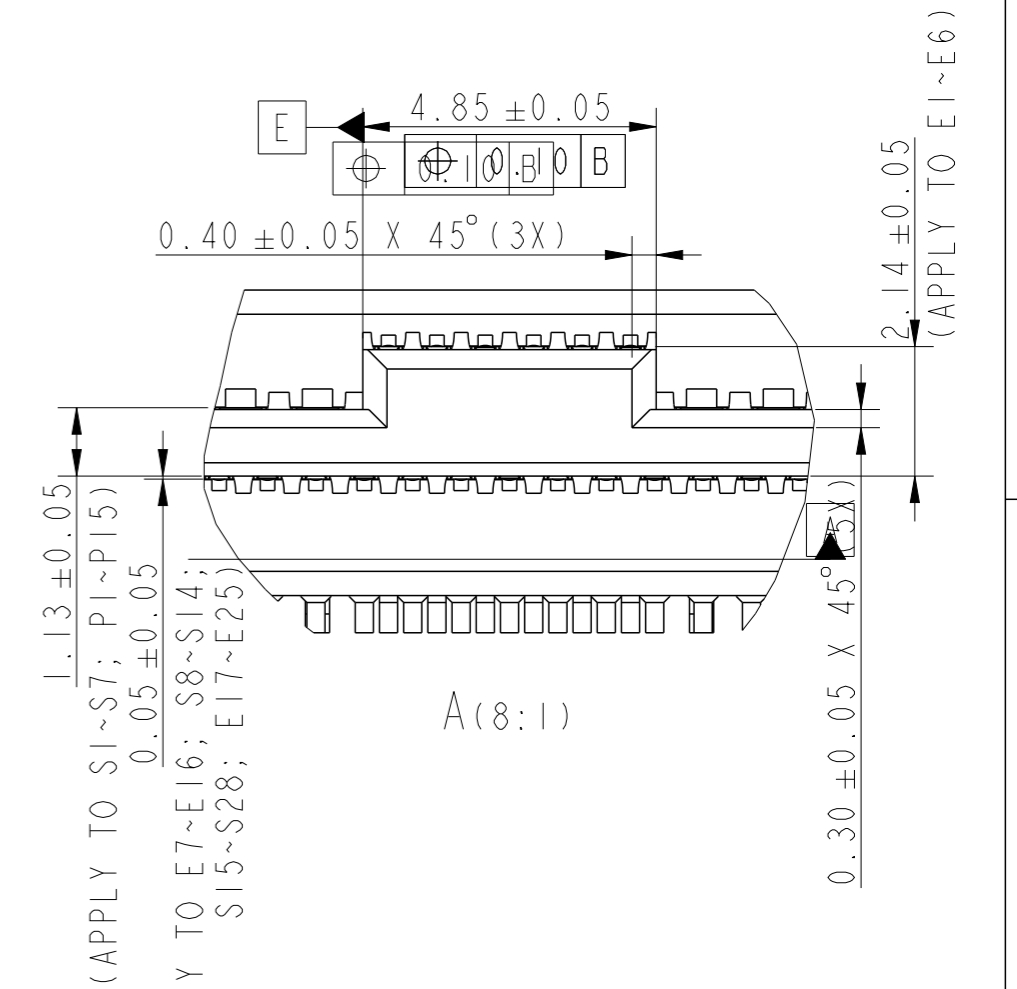
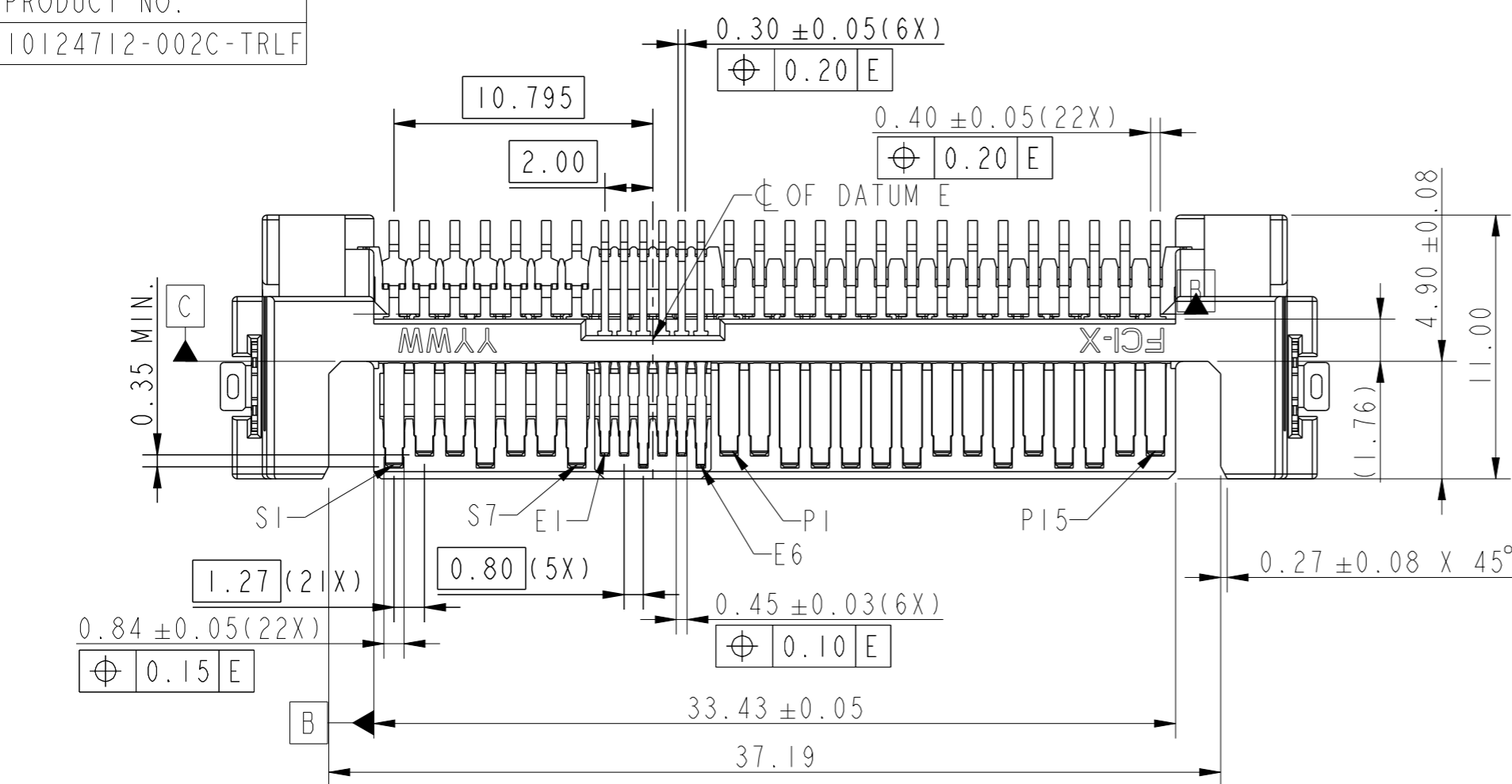
D

A

B

C

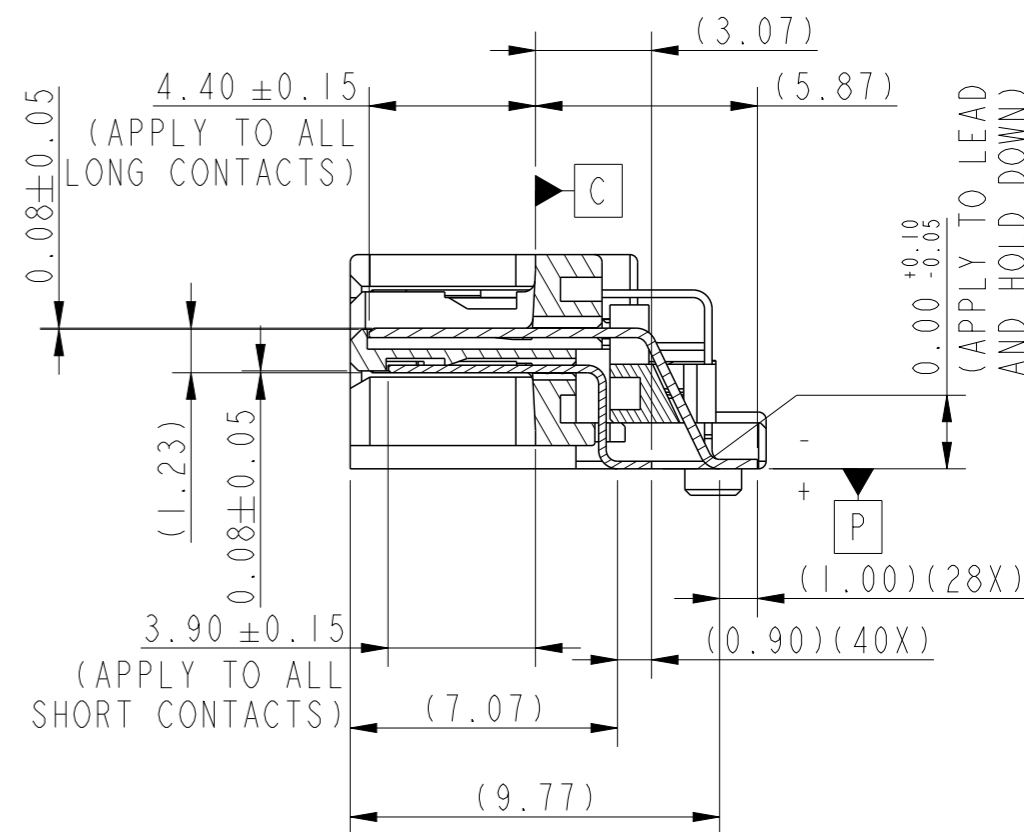
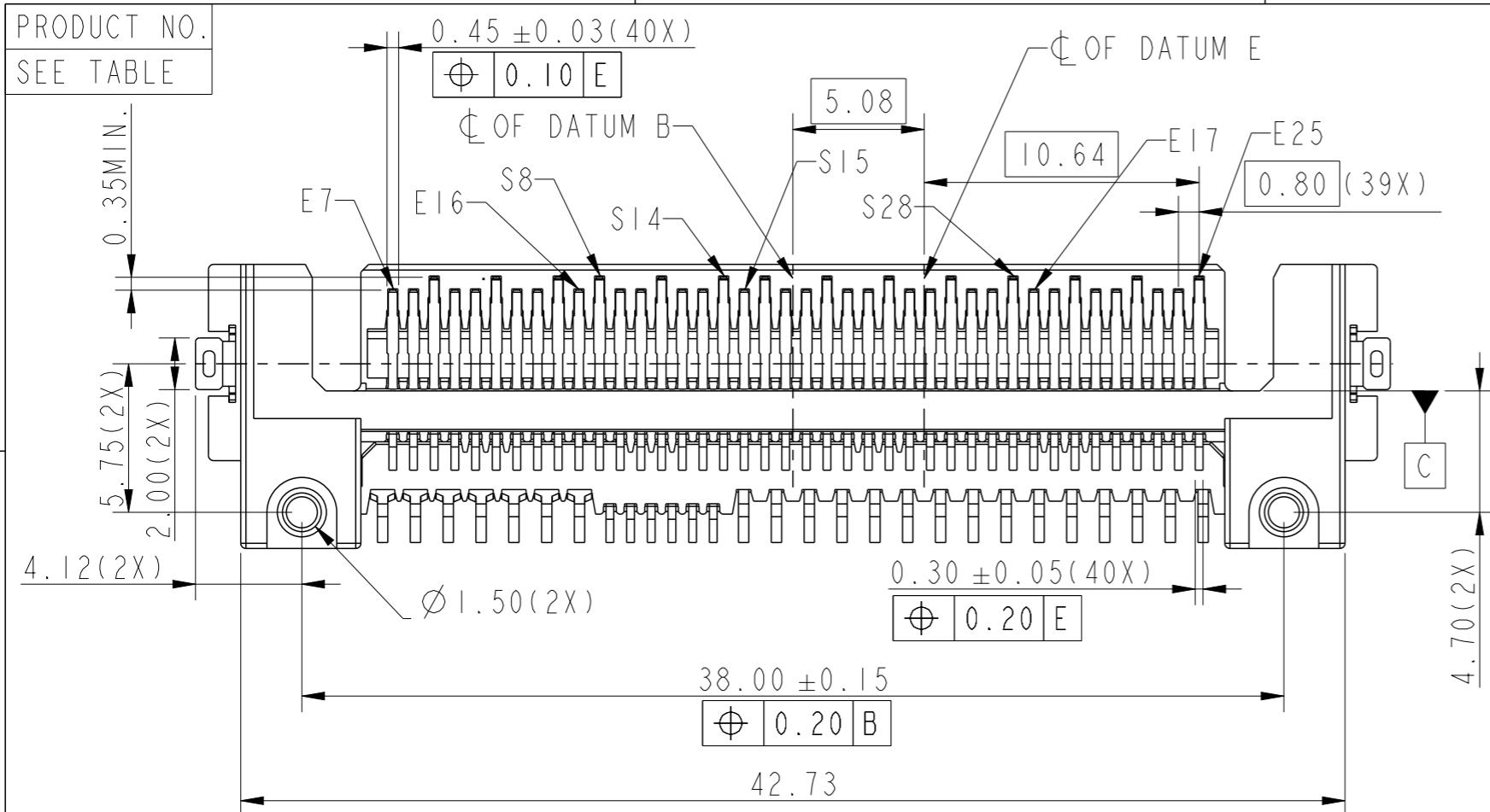
D



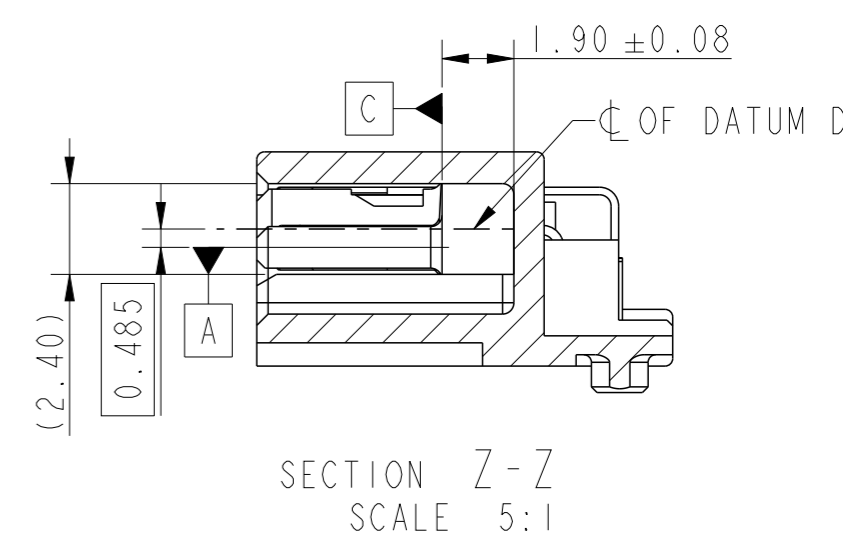
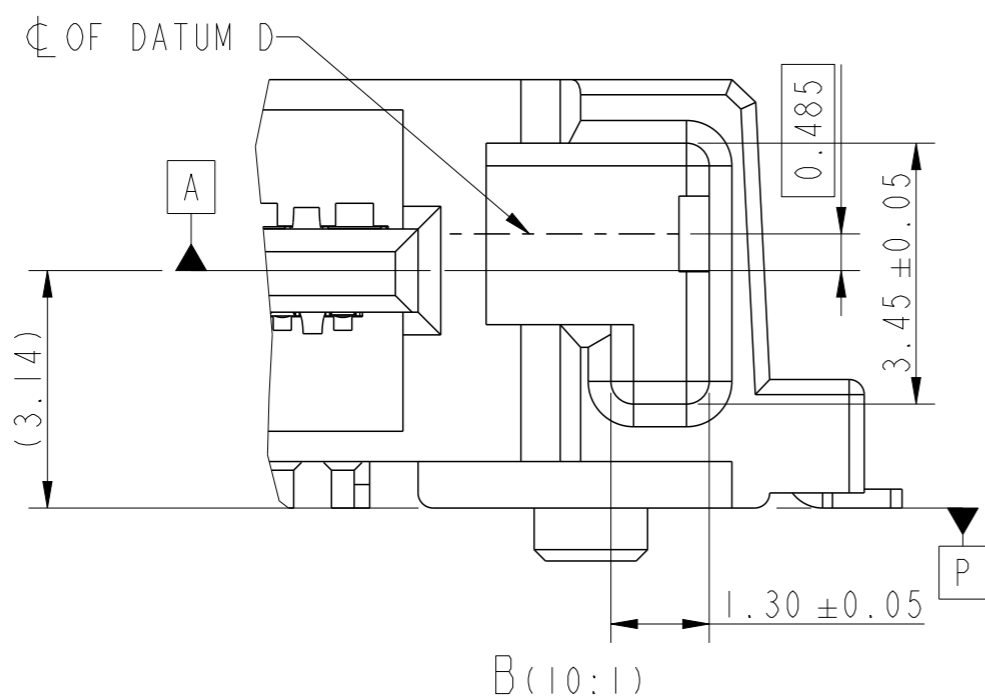
Copyright FCI.

spec ref	ASME Y14.5	dr	Jeffrey Lim	2014/09/01	projection	MM	size	A3	scale	4:1									
tolerance std	TOLERANCES UNLESS OTHERWISE SPECIFIED	eng	Jeffrey Lim	2014/09/09			ecn no	-	rel level	Released									
surface	<table border="1"> <tr> <td>linear</td> <td>0.X</td> <td>±0.25</td> </tr> <tr> <td></td> <td>0.XX</td> <td>±0.13</td> </tr> <tr> <td></td> <td>0.XXX</td> <td>±0.050</td> </tr> <tr> <td>angular</td> <td>0°</td> <td>±3°</td> </tr> </table>	linear	0.X	±0.25				0.XX	±0.13		0.XXX	±0.050	angular	0°	±3°	chr	-	product family	-
linear	0.X	±0.25																	
	0.XX	±0.13																	
	0.XXX	±0.050																	
angular	0°	±3°																	
		appr	Chen-Hong Tan	2014/09/09			title	SAS/PCIE R/A SMT PLUG		rev	A								
					www.fci.com	cat. no.	-	Product - Customer Drw	sheet 1 of 3										

PRODUCT NO.  
SEE TABLE



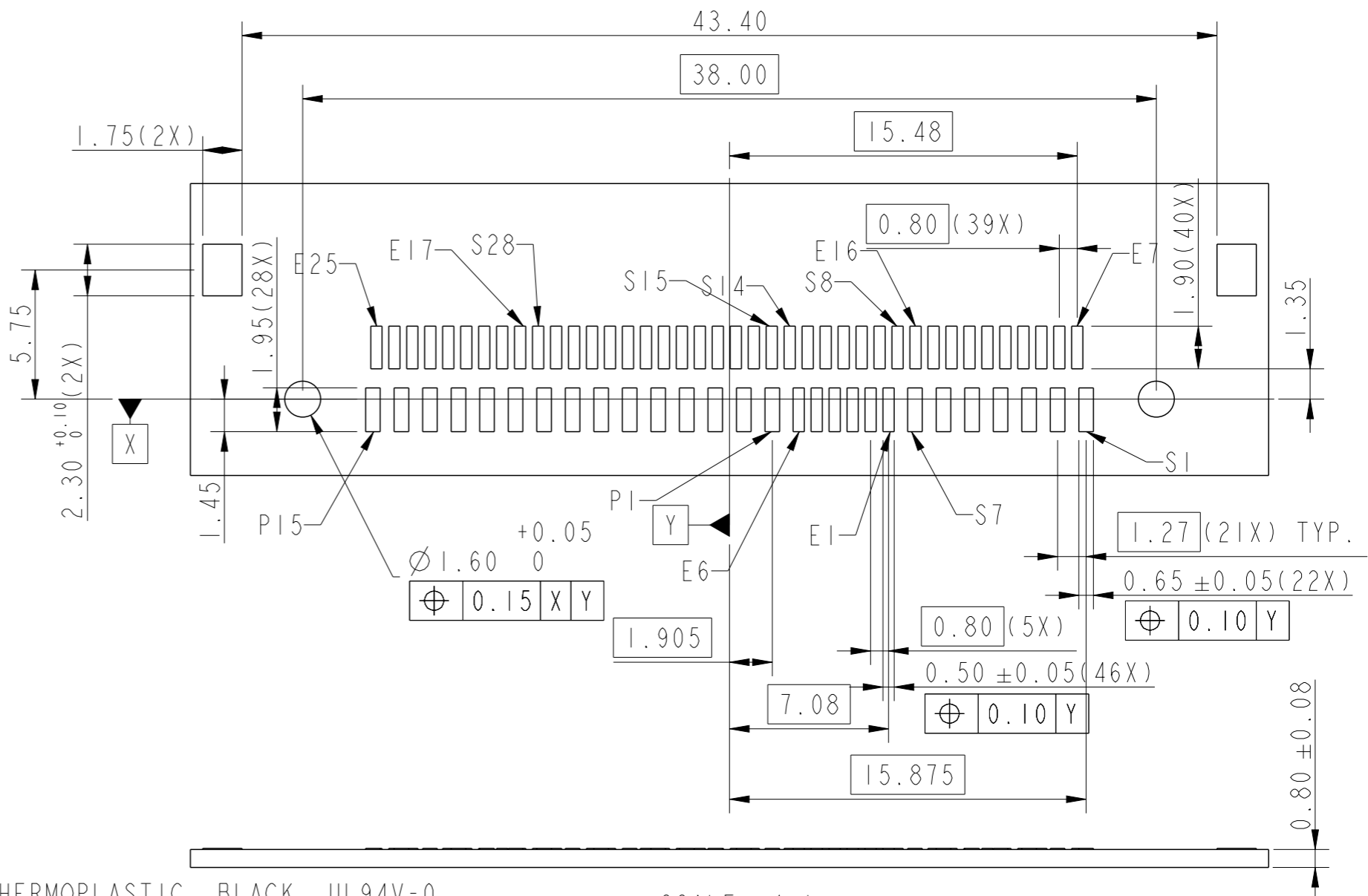
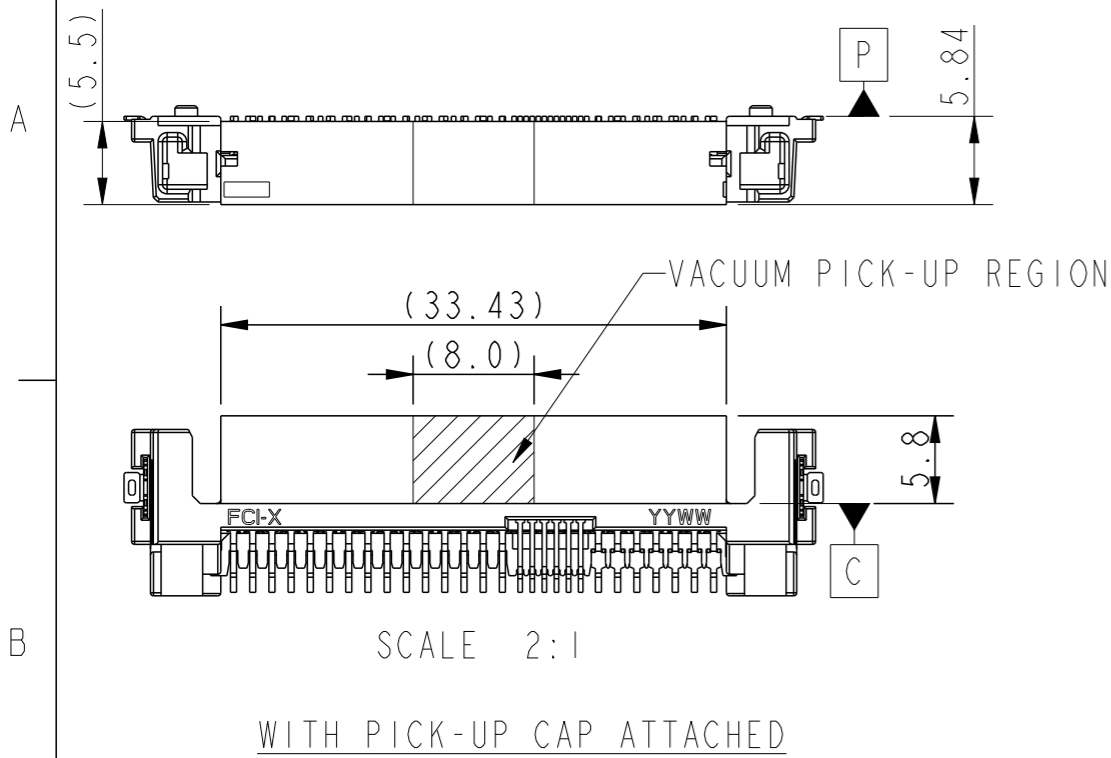
SECTION Y-Y  
SCALE 5:1



SECTION Z-Z  
SCALE 5:1

spec ref	ASME Y14.5	dr	Jeffrey Lim	2014/09/01	projection	MM	size	A3	scale	4:1							
tolerance std	TOLERANCES UNLESS OTHERWISE SPECIFIED	eng	Jeffrey Lim	2014/09/09			ecn no	-	rel level	Released							
surface	<table border="1"> <tr> <td>linear</td> <td>0.X</td> <td>±0.25</td> </tr> <tr> <td></td> <td>0.XX</td> <td>±0.13</td> </tr> <tr> <td></td> <td>0.XXX</td> <td>±0.050</td> </tr> <tr> <td>angular</td> <td>0°</td> <td>±3°</td> </tr> </table>	linear	0.X	±0.25								0.XX	±0.13		0.XXX	±0.050	angular
linear	0.X	±0.25															
	0.XX	±0.13															
	0.XXX	±0.050															
angular	0°	±3°															
appr	Chen-Hong Tan	2014/09/09			title	SAS/PCIE R/A SMT PLUG		dwg no	10124712								
www.fci.com		cat. no.	-		Product - Customer Drw			rev	A								

PRODUCT NO.	PACKAGING
10124712-002C-TRLF	TAPE & REEL



- NOTES:
- MATERIAL:  
HOUSING, GUIDE PLATE AND CAP: HIGH TEMPERATURE THERMOPLASTIC, BLACK, UL94V-0  
CONTACT & HOLD DOWN: COPPER ALLOY
  - FINISH:  
CONTACT: 1.27um MIN. Ni UNDERPLATE OVERALL,  
1.91um MIN. 100% MATTE Sn(LEAD-FREE) ON SOLDER TAIL,  
0.76um MIN. Au ON CONTACT AREA  
HOLD DOWN: 1.91um MIN. 100% MATTE Sn(LEAD-FREE) OVER  
1.27um MIN. Ni UNDERPLATE OVERALL
  - PRODUCT SPECIFICATION: GS-12-1169
  - PACKAGING SPECIFICATION: GS-14-2307
  - THIS PRODUCT MEETS EUROPEAN UNION DIRECTIVES AND OTHER COUNTRY REGULATIONS AS DESCRIBED IN GS-47-0004
  - THIS PRODUCT IS COMPLY WITH SFF-8639 SPECIFICATION
  - THE HOUSING WILL WITHSTAND EXPOSURE TO 260°C PEAK TEMPERATURE FOR 10 SECONDS IN A CONVECTION, INFRA-RED OR VAPOR PHASE REFLOW OVEN

Copyright FCI.

spec ref	ASME Y14.5	dr	Jeffrey Lim	2014/09/01	projection	MM	size	A3	scale	4:1							
tolerance std	TOLERANCES UNLESS OTHERWISE SPECIFIED	eng	Jeffrey Lim	2014/09/09			ecn no	-	rel level	Released							
surface	<table border="1"> <tr> <td>linear</td> <td>0.X</td> <td>±0.25</td> </tr> <tr> <td></td> <td>0.XX</td> <td>±0.13</td> </tr> <tr> <td></td> <td>0.XXX</td> <td>±0.050</td> </tr> <tr> <td>angular</td> <td>0°</td> <td>±3°</td> </tr> </table>	linear	0.X	±0.25								0.XX	±0.13		0.XXX	±0.050	angular
linear	0.X	±0.25															
	0.XX	±0.13															
	0.XXX	±0.050															
angular	0°	±3°															
		appr	Chen-Hong Tan	2014/09/09			dwg no	10124712	rev	A							
		www.fci.com		cat. no.	-	Product - Customer Drw	sheet 3 of 3										