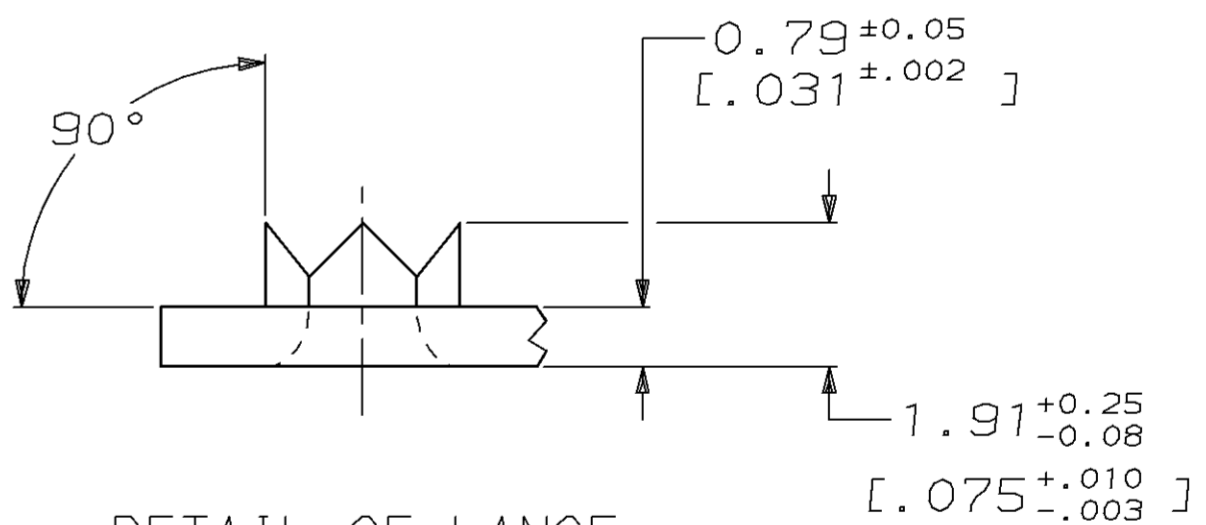
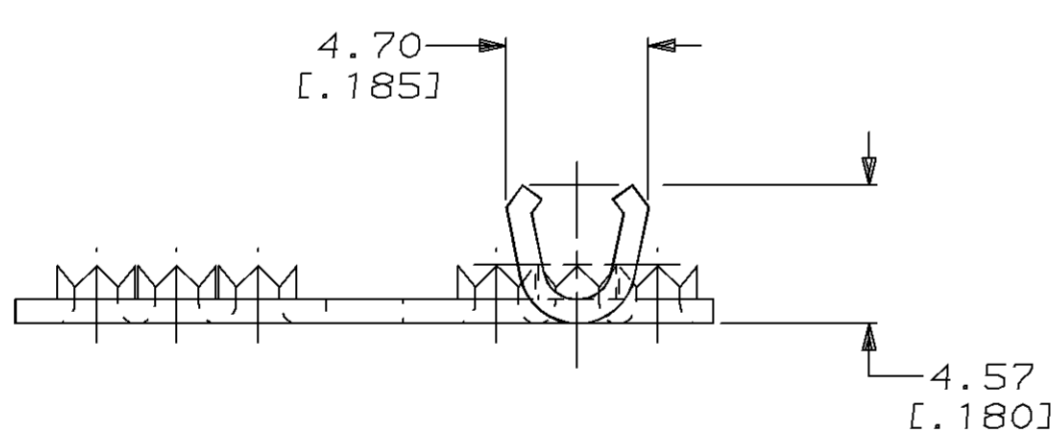
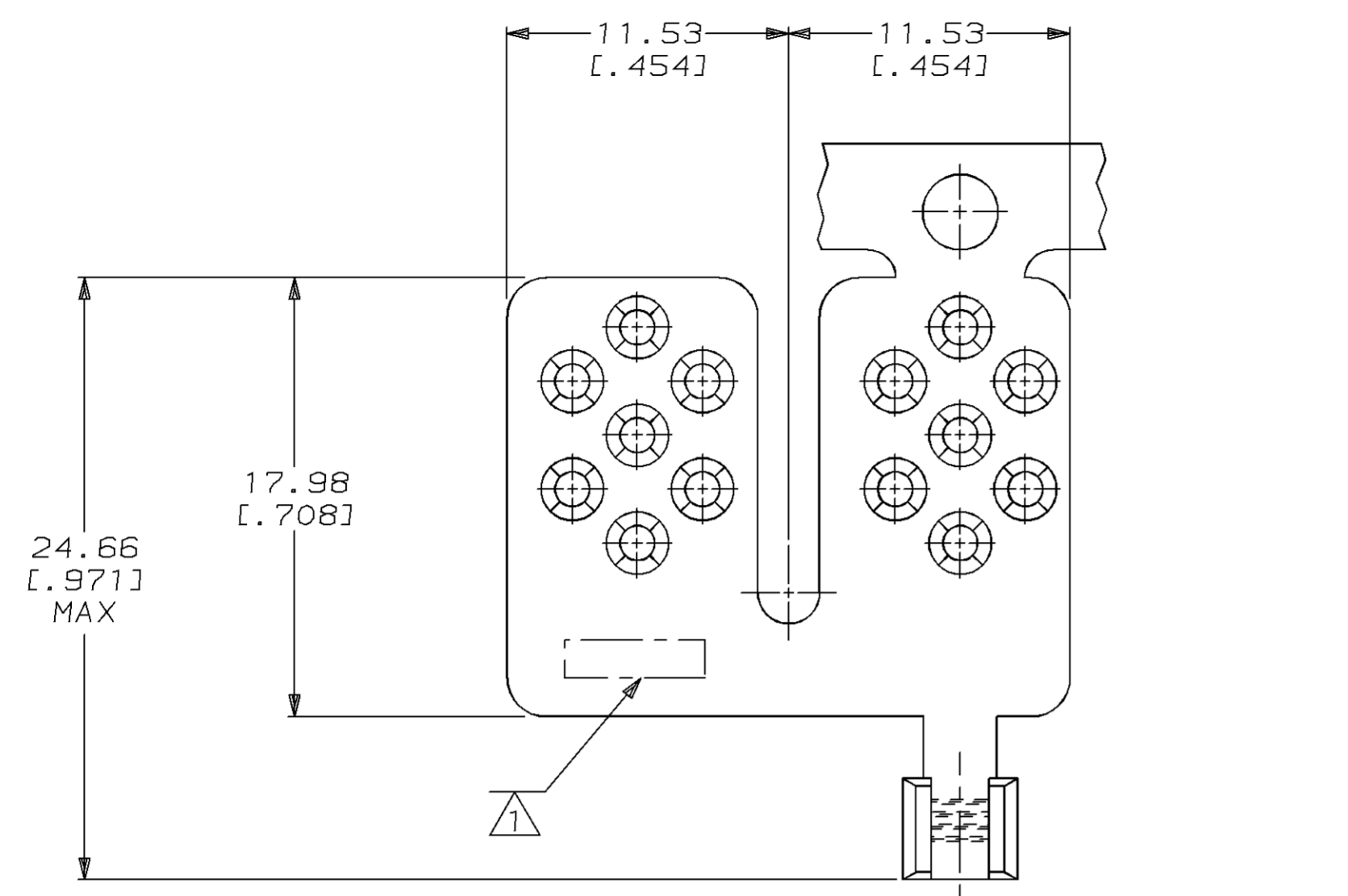


| LOC | | DIST | | P | | F | | ZONE | | LTR | | REVISIONS | | DATE | APPD |
|-----|----|------|--|---|--|---|--|------|--|-----|--|-----------|---------------------------|---------|---------|
| G | 86 | | | | | | | | | | | 0 | RELEASED PER 0720-0052-94 | 6/16/94 | OKS AJK |

METRIC
 DIMENSIONS LISTED IN mm [INCHES]

1 STAMP AMP APPROX AS SHOWN



DETAIL OF LANCE
 SCALE 10:1

| | | | | | |
|--|--|---|--|----------------------------|---|
| AMP INCORPORATED CUSTOMER SERVICE SYSTEMS | | MAX RECOMMENDED OPERATING TEMPERATURE: 170°C MAX | DO NOT SCALE PRINT. UNLESS SPECIFIED DIMENSIONS IN mm [INCHES] TOLERANCES ON: 2 PLC DEC ± - 3 PLC DEC ± - ANGLES ± - | DR 6/16/94 DK SCHRUM | AMP Incorporated Harrisburg, PA 17105-3608 |
| FOR ADDITIONAL PRODUCT INFORMATION OR COPIES OF DRAWINGS AND TECHNICAL DOCUMENTS | PRODUCT INFORMATION CENTER 1-800-522-6752 | VOLTAGE RATING: NOT APPLICABLE | MATERIAL COPPER PER ASTM B-152 | CHK 6/20/94 AJ KAUFMAN | |
| FOR APPLICATION TOOLING INFORMATION | TOOLING ASSISTANCE CENTER 1-800-722-1111 | WIRE CROSS SECTIONAL AREA RANGE: 1.04-2.62mm² [2,050-5,180] CIR MILS SOLID OR STRANDED | FINISH TIN PLATE 0.00254 [0.000100] MIN THK PER MIL-T-10727 | APPD 6/20/94 RE ROSER | SIZE C 00779 |
| FOR ORDER ENTRY | 1-800-526-5142 | THIS DRAWING IS A CONTROLLED DOCUMENT FOR AMP INCORPORATED. IT IS SUBJECT TO CHANGE AND THE CONTROLLING ENGINEERING ORGANIZATION SHOULD BE CONTACTED FOR THE LATEST REVISION. | | APPD 6/20/94 JL MECKLEY | DRAWING NO C=53645 |
| | | | | PRODUCT SPEC - | SCALE 4:1 |
| | | | | APPLICATION SPEC - | SHEET 1 OF 1 |
| | | | | WEIGHT - | |