

MATERIAL

Glass-fibre reinforced polyamide based (PA) technopolymer, grey-black colour, matte finish.

COVER

Technopolymer in Ergostyle colours, glossy finish; supplied with the handle, press-fit assembly, removable by a screwdriver.

Available also as accessories sold separately (see table ECO.).

Code	Description
29864-*	ECO.S4-*

* Complete with colour index (C1, ..., C17).

STANDARD EXECUTIONS

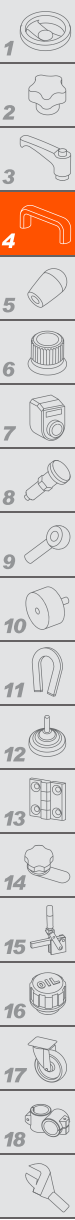
- **ESP-EH:** pass-through holes for cylindrical-head screws with hexagon socket, hexagonal-head screws or standard lock nuts.
- **ESP-SH:** pass-through holes for countersunk head screws.

FEATURES AND APPLICATIONS

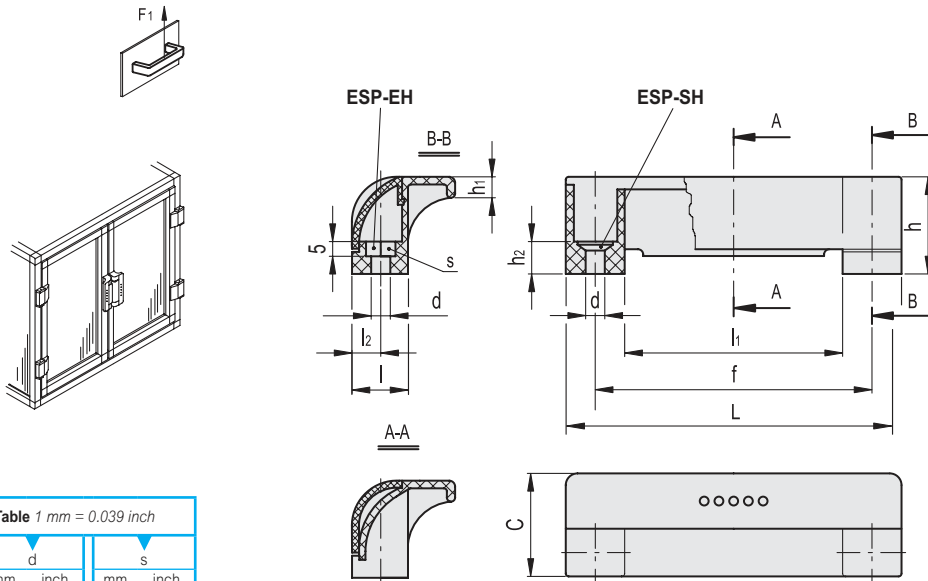
ESP handles have been especially designed to fit machine guards or automation systems with double-leaf door. The special closed design of the handle represents a safety element for the operator's fingers. Moreover, the coloured cover improves the visibility of the handle and offers the possibility of product customisation.

TECHNICAL DATA

Tensile stress: F1 value reported in the table is the result of breaking tests carried out with an appropriate dynamometric equipment under the test conditions shown in the figure with ambient temperature. Maximum tightening torque for screw assembly 3 Nm.




ERGOSTYLE® ELESA Original design
 



Conversion Table 1 mm = 0.039 inch					
L		d		s	
mm	inch	mm	inch	mm	inch
114	4.49	6.5	0.26	10	0.39



* Complete with colour index, example: 265111-C2 ESP.110-EH-C2

-  **C1**
RAL7021
-  **C2**
RAL2004
-  **C3**
RAL7035
-  **C4**
RAL1021
-  **C5**
RAL5024
-  **C6**
RAL3000
-  **C17**
RAL6017

METRIC

Code	Description	L	f±0.5	d	s	h	h1	h2	C	l	l1	l2	F1 [N]	⚖️
265111-*	ESP.110-EH-*	114	93.5	6.5	10	33	7	11	35	19	74	9.5	900	33
265151-*	ESP.110-SH-*	114	93.5	6.5	-	33	7	11	35	19	74	9.5	900	33