

2878- * * - * - *

MATERIAL CODE (.27)/.0106 THK

A=BRASS
B=PHOS BRONZE

WINDING SPEC.

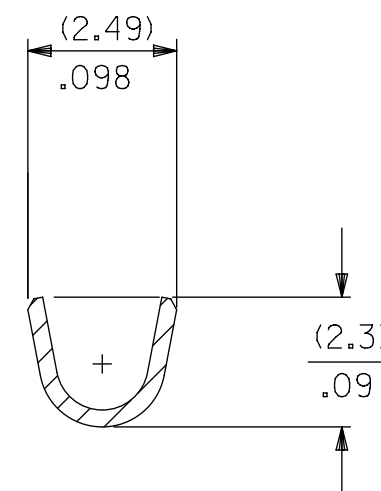
A=PER WINDING DETAIL A
B=PER WINDING DETAIL B
L=LOOSE

PLATING CODE

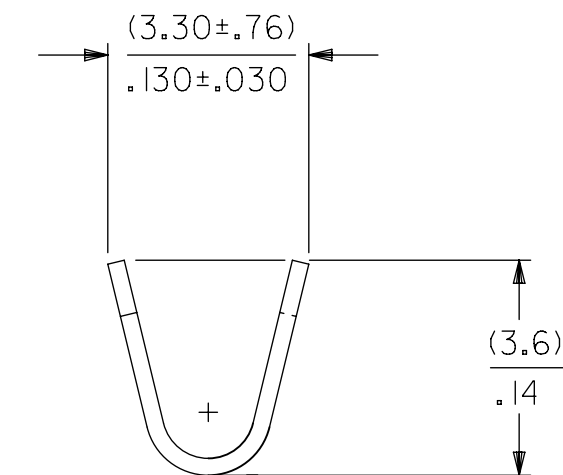
OPTION CODE

A= OVERALL PLTGS, AND STD GOLD LOC
B= LARGER SELECT GOLD LOCATION

(P909) OVERALL HOT TIN DIP: (0.00254)/.000100 MIN.
(550) SELECT GOLD: (0.00038)/.000015 MIN.
OVERALL GOLD FLASH: (0.00005)/.000002 MIN.
OVERALL NICKEL UNDERPLATE: (0.00076)/.000030 MIN.
(555) SELECT GOLD: (0.00038)/.000015 MIN.
OVERALL NICKEL UNDERPLATE: (0.00076)/.000030 MIN.



SECTION A-A
BACKGROUND OMITTED



BACKGROUND OMITTED

1. MATERIAL: SEE LEGEND
2. FINISH: SEE LEGEND
3. THIS PART CONFORMS TO PRODUCT SPECIFICATIONS PS-08-50, PS-172160-0001
4. PACKAGING SPECIFICATION: LOOSE FORM: PK-2759-001
CHAIN FORM: PK-2759-002
5. CRIMP ACCEPTS 18 TO 20 AWG WIRE WITH (2.79)/.110 MAX. INSULATION DIAMETER WHEN USED WITH 172159 SERIES HOUSINGS, (2.54)/.100 MAX INSUATION DIAMETER WHEN USED WITH 2139 OR 3069 SERIES HOUSINGS. CRIMP ACCEPTS (3.00)/.118 MAX. INSULATION DIAMETER WITH SPECIAL TOOLING.
6. (0.86±0.05)/.034±.002 IS AN OPTIONAL DESIGN
7. PARTS CONFORM TO CLASS B REQUIREMENTS OF COSMETIC SPECIFICATION PS-45499-002
8. MATING TERMINALS TO ROUND PINS IS NOT RECOMMENDED

THIS DRAWING CONTAINS INFORMATION THAT IS PROPRIETARY TO MOLEX ELECTRONIC TECHNOLOGIES, LLC AND SHOULD NOT BE USED WITHOUT WRITTEN PERMISSION									
SYMBOLS		DIMENSION UNITS		SCALE		CURRENT REV DESC: NOTE 4 UPDATED			
∇ = 0	MM/IN	1:1							
∇ = 0	GENERAL TOLERANCES (UNLESS SPECIFIED)								
∇ = 0		MM	INCH	EC NO: 605479					
S = 0	4 PLACES	±	±	DRWN: SS06 2018/09/12					
∇ = 0	3 PLACES	±	± 0.005	CHK'D: ISHWARG 2018/10/05					
∇ = 0	2 PLACES	± 0.13	± 0.01	APPR: ISHWARG 2018/10/05					
∇ = 0	1 PLACE	± 0.25	±	INITIAL REVISION:					
∇ = 0	0 PLACES	±	±	DRWN: COMSTOCK 1988/11/29					
∇ = 0	ANGULAR TOL	± 0.5°		APPR: FSMITH 2015/02/18					
∇ = 0	DRAFT WHERE APPLICABLE MUST REMAIN WITHIN DIMENSIONS		THIRD ANGLE PROJECTION		DRAWING	SERIES	MATERIAL NUMBER	CUSTOMER	SHEET NUMBER
∇ = 0			C-SIZE		2878	SEE CHART	GENERAL MARKET	1 OF 2	

molex

TERMINAL,DBL.CANTILEVER
KK CRIMP TYPE BIFURCATED

PRODUCT CUSTOMER DRAWING

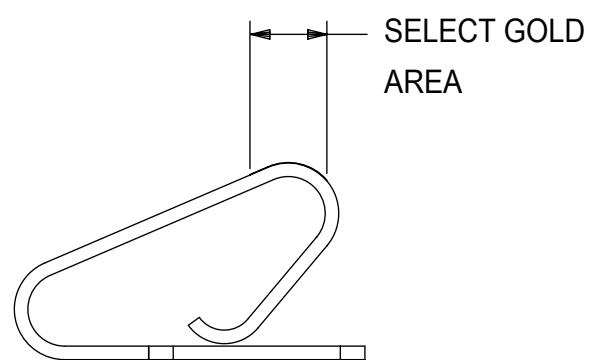
DOCUMENT NUMBER	DOC TYPE	DOC PART	REVISION
SD-2878	PSD	001	AM2

DOCUMENT STATUS P1 RELEASE DATE 2018/10/05 09:56:22

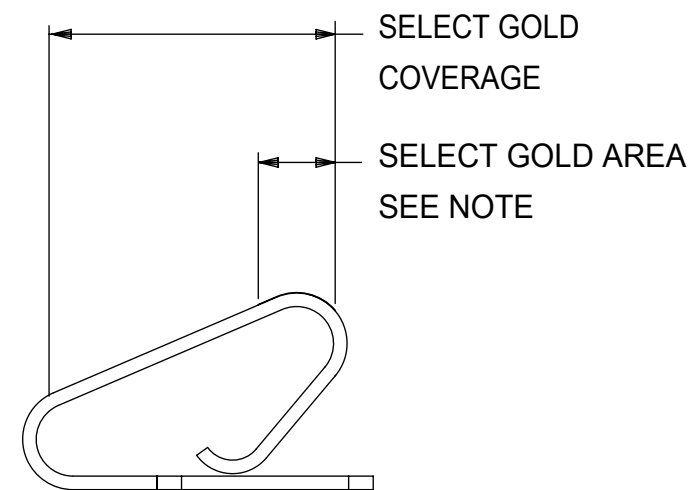
2878-A-A(*)*		
PART NO.	ENG. NO.	
08-50-0115	2878-A-A(P909)B	
08-50-0116	2878-A-A(P909)L	

2878-B-A(*)*		
PART NO.	ENG. NO.	
08-52-0126	*	2878-B-A(P909)B
08-52-0127	*	2878-B-A(P909)L
08-65-0118	*	2878-B-A(555)B
08-65-0119	*	2878-B-A(555)L
08-58-0127	*	2878-B-A(550)B
08-58-0128	*	2878-B-A(550)L

2878-A-B(*)*		
PART NO.	ENG. NO.	
08-55-0138	2878-A-B(555)B	
	2878-A-B(555)L	

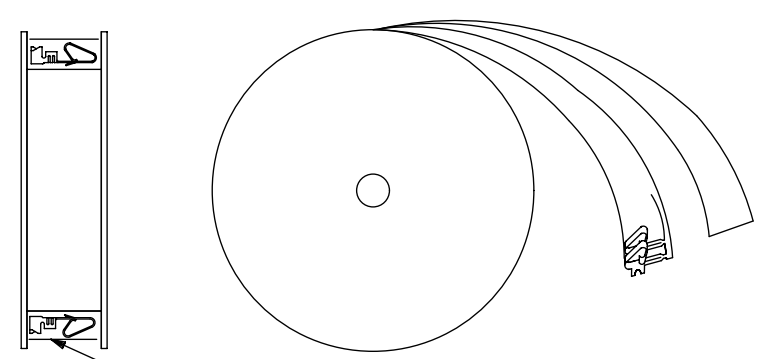


GOLD LOCATION OPTION A

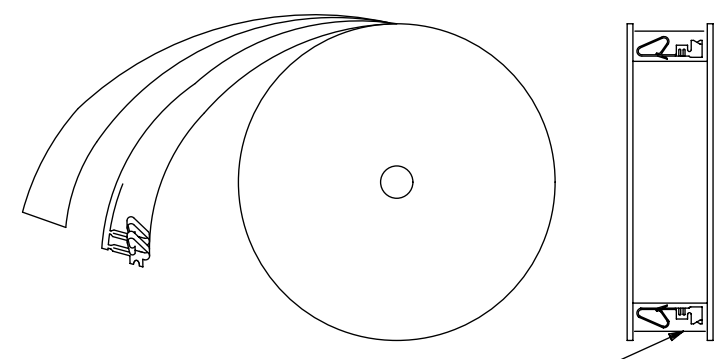


GOLD LOCATION OPTION B

NOTE: GOLD IS SPECIFIED THICKNESS IN SELECT GOLD AREA ONLY.



WINDING DETAIL A



WINDING DETAIL B

THIS DRAWING CONTAINS INFORMATION THAT IS PROPRIETARY TO MOLEX ELECTRONIC TECHNOLOGIES, LLC AND SHOULD NOT BE USED WITHOUT WRITTEN PERMISSION														
SYMBOLS A = 0 E = 0 F = 0 S = 0 T = 0 U = 0 V = 0 W = 0 X = 0 Y = 0 Z = 0	DIMENSION UNITS: MM/IN SCALE: 1:1		CURRENT REV DESC: NOTE 4 UPDATED											
	GENERAL TOLERANCES (UNLESS SPECIFIED)		EC NO: 605479		DRWN: SS06		2018/09/12					TERMINAL,DBL.CANTILEVER KK CRIMP TYPE BIFURCATED		
	4 PLACES	±	MM	±	INCH	±	CHK'D: ISHWARG	2018/10/05	PRODUCT CUSTOMER DRAWING					
3 PLACES	±	MM	±	INCH	±	APPR: ISHWARG	2018/10/05	DOCUMENT NUMBER			DOC TYPE	DOC PART	REVISION	
2 PLACES	±	0.13	±	0.01	±	INITIAL REVISION:		SD-2878			PSD	001	AM2	
1 PLACE	±	0.25	±		±	DRWN: COMSTOCK		1988/11/29		MATERIAL NUMBER			CUSTOMER	SHEET NUMBER
0 PLACES	±		±		±	APPR: FSMITH		2015/02/18		SEE CHART		GENERAL MARKET		2 OF 2
ANGULAR TOL	±	0.5	°	THIRD ANGLE PROJECTION		DRAWING	SERIES	C-SIZE		2878				
DRAFT WHERE APPLICABLE MUST REMAIN WITHIN DIMENSIONS														