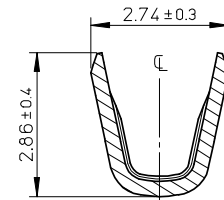
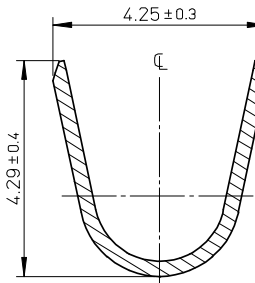
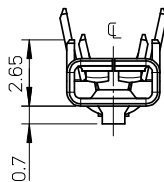


注記:
NOTES

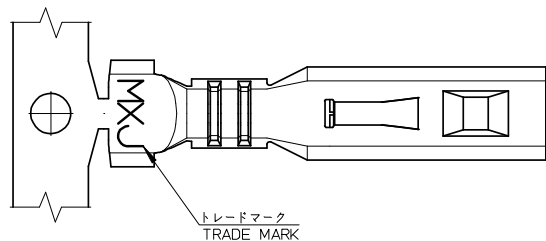
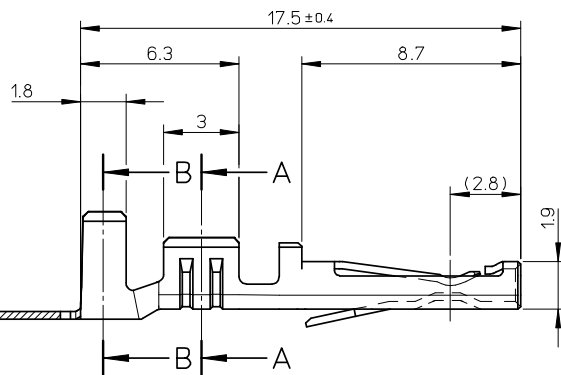
1. 使用材料: 銅合金(板厚=0.3)
MATERIALS: COPPER ALLOY (THICKNESS=0.3)
2. めっき仕様
FINISHES
 コンタクト部: ニッケル下地 金めっき
 CONTACT AREA: GOLD OVER NICKEL PLATING
 めっき厚: 金めっき 0.25 マイクロメートル以上
 下地めっき 1.0 マイクロメートル以上
 THICKNESS: GOLD 0.25 MICROMETER MINIMUM
 OVER NICKEL PLATING 1.0 MICROMETER MINIMUM
 圧着部: ニッケル下地 錫めっき
 CRIMP AREA: TIN OVER NICKEL PLATING
 めっき厚: 錫めっき 1.0 マイクロメートル以上
 下地めっき 1.0 マイクロメートル以上
 THICKNESS: TIN 1.0 MICROMETER MINIMUM
 OVER NICKEL PLATING 1.0 MICROMETER MINIMUM
3. 端子圧着の仕様については、圧着仕様書(CS-503196-001)を参照願います。
PLEASE REFER TO CRIMP SPECIFICATION (CS-503196-001) FOR ROBOT CONN.
4. 製品の仕様については、製品仕様書(PS-58691-001)を参照願います。
PLEASE REFER TO PRODUCT SPECIFICATION (PS-58691-001) FOR ROBOT CONN.
5. 製品の取扱いについては、コネクタ取り扱い説明書(AS-58696-001)を参照願います。
PLEASE REFER TO USER'S MANUAL (AS-58696-001) FOR ROBOT CONN.
6. 適合ハウジング: 503194-0600
APPLICABLE HOUSING: 503194-0600
7. 適用圧着工具: 578056-3000 (自動機/503196-1000に適用)
578056-5400 (手動工具/503196-1100に適用)
APPLICABLE CRIMP TOOL 578056-3000 (AUTOMATIC / APPLY TO 503196-1000)
578056-5400 (HAND TOOL / APPLY TO 503196-1100)
8. 適用端子引抜き工具: 578056-6000
APPLICABLE TERMINAL EXTRACTION TOOL: 578056-6000
9. 適用電線範囲: AWG#16~19 (0.76~1.39mm²)
APPLICABLE WIRE: AWG#16~19 (0.76~1.39mm²)
10. 絶縁被覆外径: φ2.0~φ2.51mm
INSULATION EXTERNAL DIA: φ2.0~φ2.51mm
11. ELV及びRoHS適合品
ELV AND RoHS COMPLIANT



SECTION A-A
Scale 10:1



SECTION B-B
Scale 10:1



バラ状 LOOSE	503196-1100	503196-****
連鎖状 CHAIN	503196-1000	
端子形状 TERMINAL CONFIGURATION	オーダー番号 ORDER No.	MODEL No.

RELEASED EC NO: J2008-3396 DRW: SAKIYAMA 2008/03/25 CHK: SSAT003 2008/03/26 APPR: S/CHIKAWA 2008/03/26	GENERAL TOLERANCES (UNLESS SPECIFIED)		DIMENSION STYLE MM ONLY		SCALE 5:1	DESIGN UNITS METRIC	THIRD ANGLE PROJECTION
	10 UNDER	±0.20	DRAWN BY S. AKIYAMA	DATE 08/02/06	ROBOT CONN. 36P REC. CRIMP TERMINAL		
	10 OVER 30 UNDER	±0.25	CHECKED BY S. SATO	DATE 08/02/06			
	30 OVER	±0.30	APPROVED BY S. ICHIKAWA	DATE 08/02/06	MOLEX INCORPORATED DOCUMENT NO. SD-503196-001 SHEET NO. 1 OF 1		
ANGULAR ±3°		MATERIAL NO.					
DRAFT WHERE APPLICABLE MUST REMAIN WITHIN DIMENSIONS		SEE CHART		THIS DRAWING CONTAINS INFORMATION THAT IS PROPRIETARY TO MOLEX INCORPORATED AND SHOULD NOT BE USED WITHOUT WRITTEN PERMISSION			