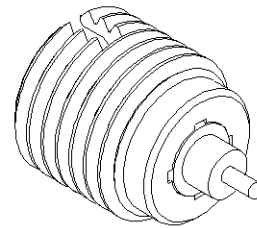
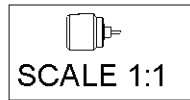
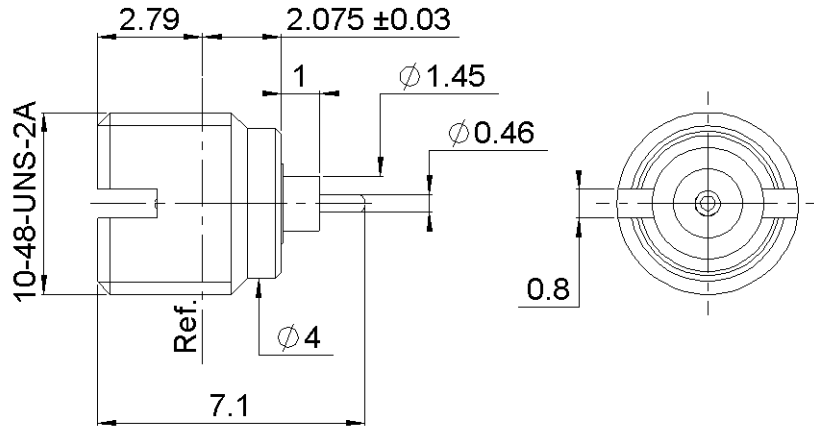
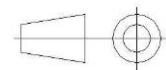


PAGE 1/3	ISSUE 06-12-16A	SERIES SMP	PART NUMBER R222561001
----------	-----------------	------------	------------------------



All dimensions are in mm. Tolerances according ISO 2768 m-H



COMPONENTS	MATERIALS	PLATING (µm)
Body	<b>STAINLESS STEEL</b>	<b>PASSIVATED</b>
Center contact	<b>BERYLLIUM COPPER</b>	<b>GOLD OVER NICKEL</b>
Outer contact	-	-
Insulator	<b>PTFE</b>	-
Gasket	-	-
Others parts	-	-
-	-	-
-	-	-

PAGE 2/3	ISSUE <b>06-12-16A</b>	SERIES <b>SMP</b>	<b>PART NUMBER R222561001</b>
----------	------------------------	-------------------	-------------------------------

**PACKAGING**

Standard	Unit	Other
<b>100</b>	<b>Contact us</b>	<b>Contact us</b>

**ELECTRICAL CHARACTERISTICS**

Impedance		<b>50</b>	Ω	
Frequency		<b>0-40</b>	GHz	
VSWR	<b>*1.3</b>	<b>+</b>	<b>0,000</b>	x F(GHz) Maxi
Insertion loss			<b>*0.12</b>	√F(GHz) dB Maxi
RF leakage	-	(	<b>NA</b>	- F(GHz)) dB Maxi
Voltage rating			<b>335</b>	Veff Maxi
Dielectric withstanding voltage			<b>500</b>	Veff mini
Insulation resistance			<b>5000</b>	MΩ mini

**MECHANICAL CHARACTERISTICS**

Center contact retention				
Axial force – Mating End		<b>NA</b>	N mini	
Axial force – Opposite end		<b>NA</b>	N mini	
Torque		<b>NA</b>	N.cm mini	
Recommended torque				
Mating		<b>NA</b>	N.cm	
Panel nut		<b>90</b>	N.cm	
Mating life		<b>100</b>	Cycles mini	
Nominal Weight (Add +15% for max weight)		<b>0,450</b>	g	

**ENVIRONMENTAL**

Operating temperature	<b>-65/+165</b>	°C
Hermetic seal	<b>NA</b>	Atm.cm3/s
Panel leakage	<b>NA</b>	

**SPECIFICATION**

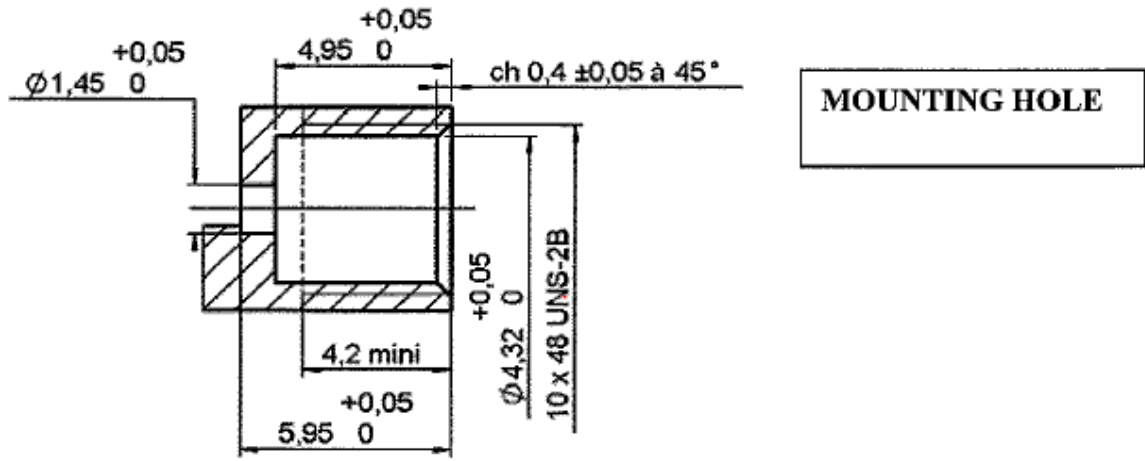
**OTHER CHARACTERISTICS**

Assembly instruction:

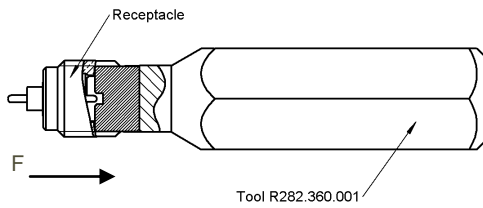
Others:  
**See page 3**  
**\*Coaxial transmission only**  
**\*DC-12GHz**

PAGE 3/3	ISSUE 06-12-16A	SERIES SMP	PART NUMBER R222561001
----------	-----------------	------------	------------------------

**ADDITIONAL INFORMATIONS  
MOUNTING AND REPLACEMENT INSTRUCTIONS**



1. Connector must be screwed or unscrewed with adapted torque driver R282.339.001 (recommended coupling torque : 90 Ncm) screw driver : R282.360.001
2. Slide on the connector in F direction until it stops against the tool.



3. Screw the whole into the housing until activation of the torque driver.
4. Withdraw the tool and solder the center contact.

