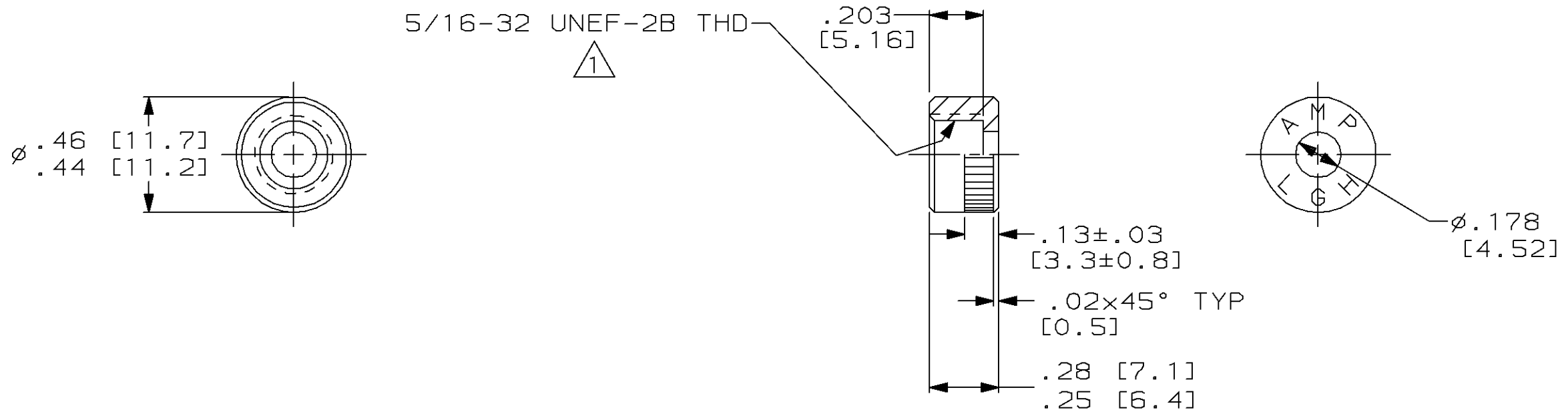


THIS DRAWING IS UNPUBLISHED. RELEASED FOR PUBLICATION, 19 .  
© COPYRIGHT 19 BY AMP INCORPORATED. ALL INTERNATIONAL RIGHTS RESERVED.

PROD 4090 CODE	LOC DF	DIST S0	P	F	REVISIONS					
					ZONE	LTR	DESCRIPTION	DATE	APPD	
			✓	✓		C	REV & REDRAWN; DF-5404	CT	5-92	SG
			✓	✓		D	REV PER ECN DF-6587 JB.		3-93	KJK



1 THREAD AREA SHOULD NOT BE GAGED AS A MACHINED PART. PART WILL MATE AND BE FUNCTIONAL WITH MATING HALF OF LGH CONNECTORS.

862298-1  
PART NO.

DO NOT SCALE PRINT. UNLESS SPECIFIED DIMENSIONS IN INCHES [mm] TOLERANCES ON: 2 PLC DEC ± .03 [0.8] 3 PLC DEC ± .010 [0.25] ANGLES ± -	DR 5-1-92 C.C. THOMAS	<b>AMP</b> AMP Incorporated Harrisburg, PA 17105-3608
	CHK 7-27-92 S. GLATFELTER	
	APPD 7-27-92 S. GLATFELTER	
	APPD 7-27-92 S. GLATFELTER	
MATERIAL EPOXY MLDG. CMPD.	PRODUCT SPEC -	NAME CAP, LGH-1/2 & 1/2L
FINISH COLOR: GREEN	APPLICATION SPEC -	SIZE <b>B</b> CAGE CODE 00779 DRAWING NO <b>C</b> -862298
	WEIGHT -	SCALE 2:1 SHEET 1 OF 1

THIS DRAWING IS A CONTROLLED DOCUMENT FOR AMP INCORPORATED. IT IS SUBJECT TO CHANGE AND THE CONTROLLING ENGINEERING ORGANIZATION SHOULD BE CONTACTED FOR THE LATEST REVISION.