

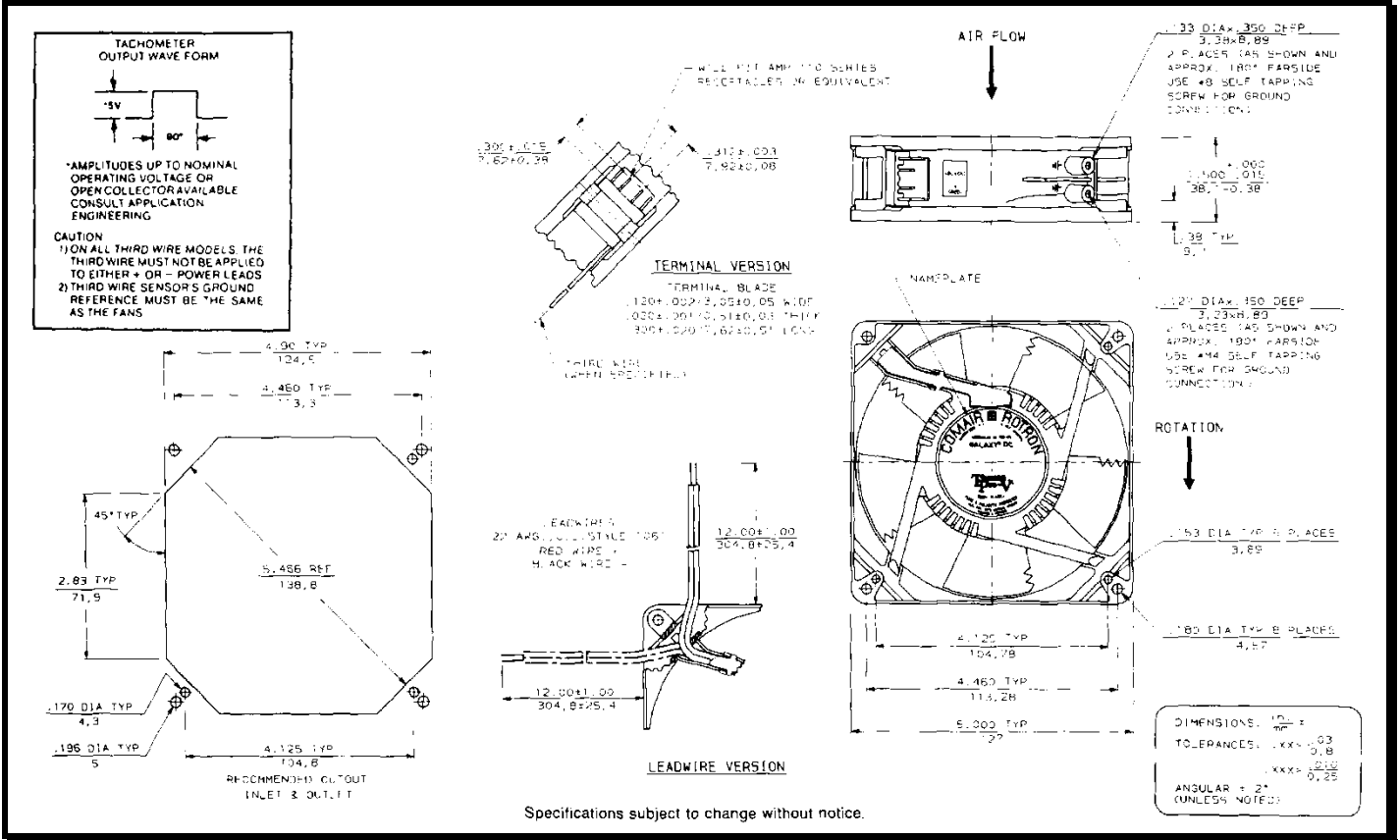
SPECIFICATIONS



Model Number: GL24B7-E2
Part Number: 19039031A

Feb. 22, 2005

Mechanical Drawing:



Motor:

Nominal Voltage = 24 vdc
 Operating Voltage Range = 12 - 24 vdc
 Nominal Running Current = 0.630 amps
 Locked Rotor Current = 1.350 amps
 Running Power = 15 watts
 Average Speed = 3200 RPM
 Bearings = Ball
 Air Flow = 150 CFM
 Acoustic = 53.6 dBA

Construction:

Venturi: Die cast zinc alloy, painted black.
 Propeller: Plastic, Black, UL 94V-0.

Life Expectancy:

This fan is designed for continuous duty life of 82,500 hours at 50°C.

Agency Certifications:

UL

Additional Features:

Brushless DC Motor
 Locked Rotor Protection
 Automatic Restart Capability
 Reverse Polarity Protected
 Operating Temperature: -10°C to 70°C
 Storage Temperature: -40°C to 85°C
 Envirosield Type 2

Tachometer:

Output: 5vdc TTL
 I_c: 5mA Typical
 Isolated: No
 Pulses per Revolution: 2

Termination:

12" Lead wires, UL 1061, 22 AWG
 Red - Power (+)
 Black - Ground (-)
 Blue/White - Tachometer (Output)