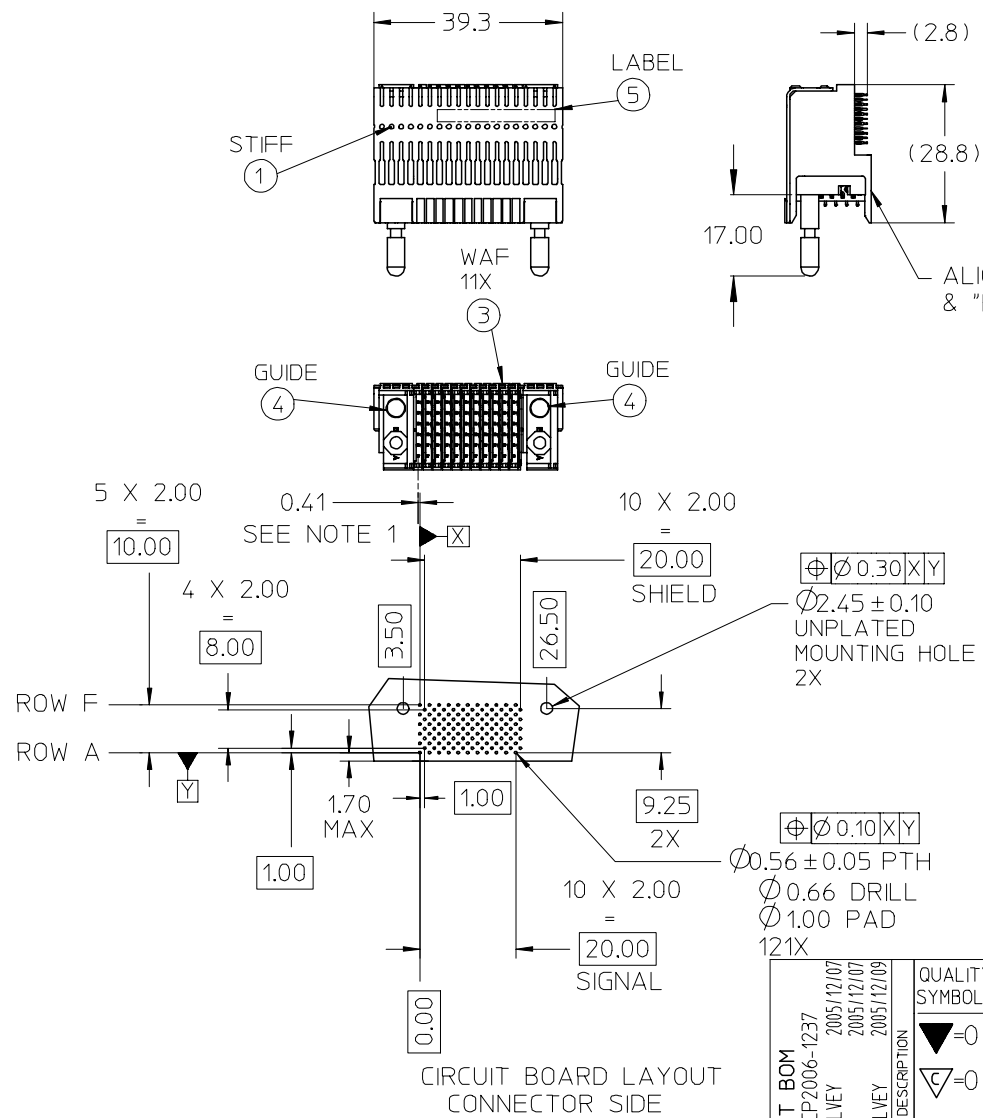


ITEM	PART NUMBER	QTY	DESCRIPTION
1	74601-0039	1	STIFFENER
2	73726-0000	2	MOUNTING SCREW
3	74602-5030	11	6.25mm SIGNAL WAFER, LF
4	74604-1600	2	GUIDE MODULE, UNPOLARIZED
5	73728-0000	1	CUSTOM LABEL

- NOTES:
- DISTANCE FROM CENTER CONTACT TO CENTER OF PLATED THRU HOLE.
 - SCREWS PACKED IN BAG WITH TUBE.
 - STIFFENER MARKED WITH MOLEX PART NUMBER AND DATE CODE.
 - PARTS PACKAGED PER PK-70873-0892.
 - THIS PART CONFORMS TO MOLEX PRODUCT SPECIFICATION PS-74031-999.

LEADFREE PLATING
ON SIGNALS AND
SHIELDS



CIRCUIT BOARD LAYOUT
CONNECTOR SIDE

CUSTOMER: IBM

CORRECT BOM	QUALITY SYMBOLS
EC NO: UCP2006-1237	▽=0
DRWN:KMULVEY 2005/12/07	▽=0
CHKD: 2005/12/07	
APPR:KMULVEY 2005/12/09	
REV	DESCRIPTION
A1	

GENERAL TOLERANCES (UNLESS SPECIFIED)	
	mm
4 PLACES	± 0.13
3 PLACES	± 0.25
2 PLACES	± 0.50
1 PLACE	± 1.00
ANGULAR ±1/2°	

DIMENSION STYLE	
MM ONLY	
DRAWN BY	DATE
KMULVEY	2005/12/01
CHECKED BY	DATE
JBINGHAM	2005/12/01
APPROVED BY	DATE
SREED	2005/12/01
MATERIAL NO.	
74600-9975	

SCALE	DESIGN UNITS	THIRD ANGLE PROJECTION
1:1	METRIC	
TITLE		
VHDM 6 ROW RIGHT ANGLE MALE SALES ASSEMBLY		
MOLEX INCORPORATED		
MATERIAL NO.	DOCUMENT NO.	SHEET NO.
74600-9975	SD-74600-9975	1 OF 1
THIS DRAWING CONTAINS INFORMATION THAT IS PROPRIETARY TO MOLEX INCORPORATED AND SHOULD NOT BE USED WITHOUT WRITTEN PERMISSION		