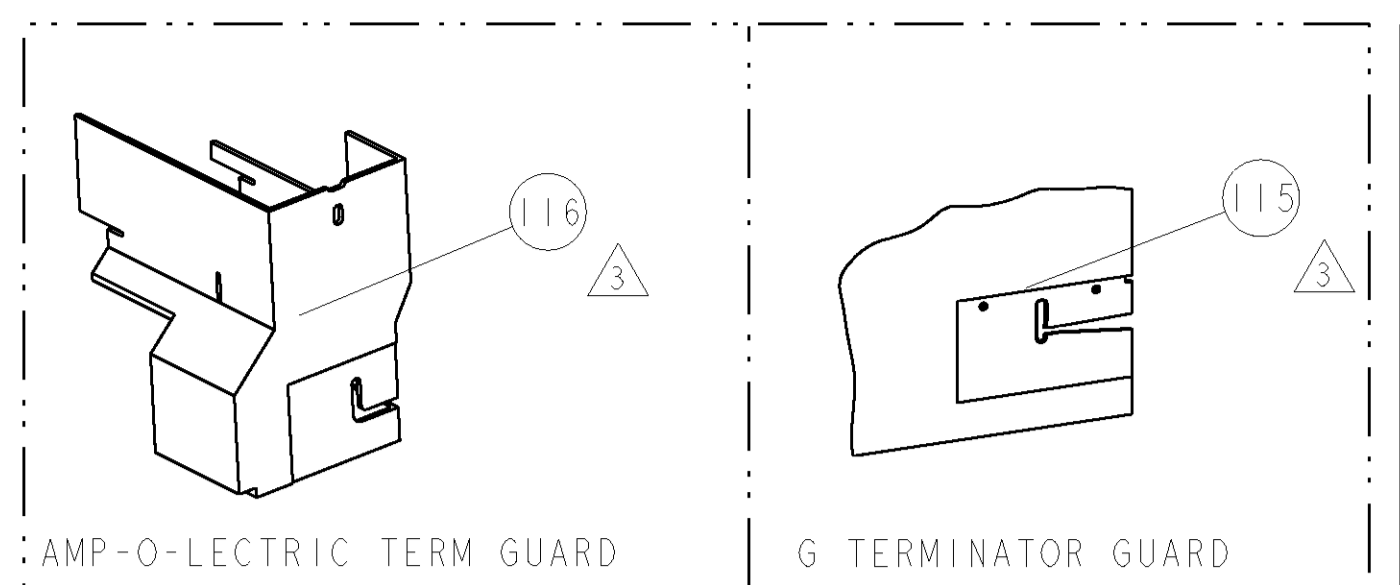


PART NUMBER	REV	FIRST USED	POWER UNIT	FEED TYPE	DESCRIPTION
1852795-1	A	122500-1	LEADMAKER	AIR FEED	CUTS CARRIER
1852795-2	A	565435-5	BENCH MODEL K	AIR FEED	CUTS CARRIER
1852795-3	A	354500-1	BENCH MODEL G	AIR FEED	CUTS CARRIER
7-1852795-7	A	-	-	-	SPARE PARTS

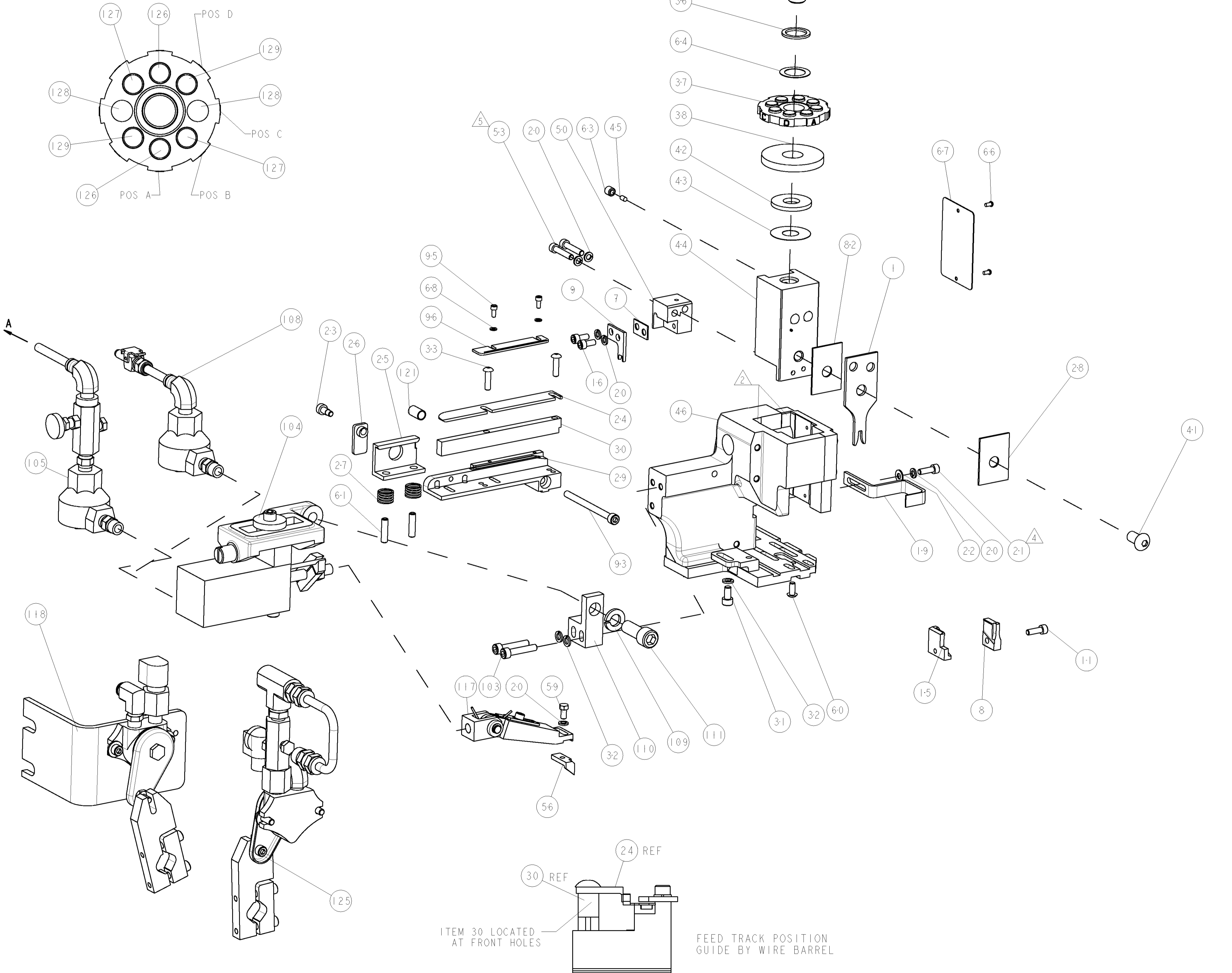
- ① RECOMMENDED SPARE PARTS
- ② GREASE LIGHTLY
- ③ GUARD MUST BE IN PLACE WHEN OPERATING APPLICATOR IN A BENCH MACHINE
- ④ INSTALL ITEMS 101, 102 & 119 ON SIDE OF STRIPPER ON APPLICATOR HOUSING WITH ITEM 21
- ⑤ CUT TO LENGTH AT ASSEMBLY



TE P/N		ARK-LES		ARK-LES TERMINAL - TE CRIMP SPECS	
1949852	4000 262-5				
		PAD LTR	CRIMP HEIGHT	WIRE SIZE	
-	-	A	1.68mm±.05/.05[.066±.002/- .002]	16AWG	
-	-	B	1.55mm±.05/.05[.061±.002/- .002]	18AWG	
-	-	C	1.47mm±.05/.05[.058±.002/- .002]	20AWG	
-	-	D	1.42mm±.05/.05[.056±.002/- .002]	22AWG	
		CRIMP	SIZE	TYPE	RANGE
-	-	WIRE	3.05mm [1.20]	F	22-16 AWG
		INSUL	-	-	-
WIRE STRIP LENGTH	TERM APPL SPEC	FEED	APPLICATOR INSTRUCTIONS		SET UP GAGE
2.39-3.96	CUSTOMER	8.53	408-8040		458637-1

LOC	DIST	REVISIONS			
A	66	P LTR	DESCRIPTION	DATE	DRN
		A	RELEASED	17FEB2009	RR

-	2	2	2	-	1-354779-6	PIN, WIRE DISC, .3070	129
-	2	2	2	-	1-354779-2	PIN, WIRE DISC, .3050	128
-	2	2	2	-	354779-4	PIN, WIRE DISC, .3010	127
-	2	2	2	-	9-354778-3	PIN, WIRE DISC, .2960	126
-	-	1	-	-	455350-4	AIR BLAST ASS'Y	125
-	1	1	1	-	1-22281-8	SPRING, COMPRESSION	121
-	-	1	-	..	692655-6	AIR FEED VALVE ASSEMBLY	118
-	1	1	1	-	461062-1	FEED FINGER ASSEMBLY	117
-	-	REF	-	..	455749-1	GUARD WINDOW	116
-	REF	-	-	..	679532-1	INSERT, GUARD	115
-	1	1	1	-	3-21001-5	SCR, SKT HD CAP 3/8-16 X 1.000	111
-	1	1	1	-	459610-1	MOUNT, FEED BRACKET	110
-	1	1	1	-	21024-8	WASHER, SPRG LOCK, REG 3/8	109
-	1	1	1	-	692655-7	AIR FEED VALVE ASSEMBLY	108
-	-	1	-	-	24024-2	VALVE, SHUT OFF	106
-	-	1	-	-	692655-5	AIR FEED VALVE ASSEMBLY	105
-	1	1	1	-	461065-1	ASSEMBLY, AIR FEED	104
-	2	2	2	-	3-21000-9	SCR, SKT HD CAP 10-32 X 1.000	103
-	1	1	1	-	986220-3	CLAMP, CABLE, BLACK	102
-	1	-	1	-	23238-1	INSERT, COUPLING	101
-	42	21	42	IN	27319-4	TUBING 1/4" O.D.	100
-	1	1	1	-	1-690438-5	FRONT STRIP GUIDE	96
-	2	2	2	-	1-21000-3	SCR, SKT HD CAP 4-40 X .250	95
-	1	1	1	-	8-21000-7	SCR, SKT HD CAP 10-32 X 2.500	93
-	1	1	1	-	455888-9	SPACER, CRIMPER	82
-	1	1	1	-	4088040	SF APPL INST 408-8040	72
-	1	1	1	-	217238-1	GENERAL INSTRUCTION PKG	71
-	2	2	2	-	21024-2	WASHER, SPRG LOCK, REG NO 4	68
-	1	1	1	-	461264-1	PLATE, IDENTIFICATION	67
-	2	2	2	-	21017-2	SCREW, DRIVE	66
-	1	1	1	-	986950-1	WASHER, FLAT PRECISION	64
-	1	1	1	-	21009-2	SCR, SET, SELF LOCKING 1/4-20 X .250	63
-	2	2	2	-	5-21006-6	SCR, SET, CUP POINT 10-32 X .750	61
-	1	1	1	-	22733-8	SCR, BHSC, SELF-LOCKING, 8-32 X .375	60
-	1	1	1	-	2-22603-0	SCR, HEX HD CAP 8-32 X .312	59
-	1	1	1	-	694433-2	FEED PAWL	56
-	2	2	2	-	3-21000-0	SCR, SKT HD CAP 8-32 X .875	53
-	1	1	1	-	1583893-4	HOLDER, SLUG BLADE	50
-	1	1	1	-	1633399-1	APPL., BASIC AIR FEED SUB ASSY	46
-	1	1	1	-	690191-1	PLUG, NYLON	45
-	1	1	1	-	455673-1	RAM, SIDE FEED	44
-	1	1	1	-	690125-1	SHIM SUB-ASSY	43
-	1	1	1	-	690124-1	WASHER, RAM (.115)	42
-	1	1	1	-	7-21002-6	SCR, BTN SKT HD CAP 5/16-24 X .625	41
-	1	1	1	-	690223-2	SPACER, INS.	38
-	1	1	1	-	354777-1	WIRE DISC, ASSEMBLY	37
-	1	1	1	-	22480-5	SPRING, COMPRESSION	36
-	1	1	1	-	690212-1	POST, RAM	35
-	2	2	2	-	2-21002-3	SCR, BTN SKT HD CAP 8-32 X .625	33
-	3	3	3	-	21024-5	WASHER, SPRG LOCK, REG NO 10	32
-	1	1	1	-	3-21000-4	SCR, SKT HD CAP 10-32 X .375	31
-	1	1	1	-	1320908-9	SPACER, STRIP GUIDE	30
-	1	1	1	-	1633629-2	PLATE, REAR STRIP GUIDE	29
-	1	1	1	-	1-455888-0	SPACER, CRIMPER	28
-	2	2	2	-	1-22284-0	SPRING, COMPRESSION	27
-	1	1	1	-	356835-1	LEVER, DRAG RELEASE	26
-	1	1	1	-	240792-1	DRAG, TERMINAL	25
-	1	1	1	-	1633630-2	PLATE, STRIP GUIDE	24
-	1	1	1	-	21989-8	SCR, SKT HD SHLDR 3/16 DIA X .250	23
-	-	-	-	-	21055-6	WASHER, FLAT, REG NO 8	22
-	1	1	1	-	2-21000-7	SCR, SKT HD CAP 8-32 X .500	21
-	6	6	6	-	21024-4	WASHER, SPRG LOCK, REG NO 8	20
-	1	1	1	-	1-456468-4	STRIPPER, SPECIAL	19
-	2	2	2	-	2-21000-6	SCR, SKT HD CAP 8-32 X .375	16
-	1	1	1	-	2-1633124-0	PLATE, REAR SHEAR	15
-	1	1	1	-	2-21000-7	SCR, SKT HD CAP 8-32 X .500	11
-	1	1	1	-	1-1583859-6	BLADE, SLUG	9
-	1	1	1	-	1633766-1	ANVIL, WIRE, SPECIAL	8
-	1	1	1	-	1-240641-9	SPACER	7
-	-	-	-	..	-	-	6
-	-	-	-	..	-	-	4
-	-	-	-	..	-	-	3
-	1	1	1	-	3-456409-2	CRIMPER, WIRE .120 "F" PREMIUM	1



ITEM 30 LOCATED AT FRONT HOLES
FEED TRACK POSITION GUIDE BY WIRE BARREL

DIMENSIONS:		TOLERANCES UNLESS OTHERWISE SPECIFIED:		CUSTOMER DRAWING	
INCHES	0 PLC	±		SCALE	3:5
	1 PLC	±0.1		SHEET	1 OF 1
	2 PLC	±0.01		REV	A
	3 PLC	±0.001			
	4 PLC	±0.0001			
	ANGLES	±0.0001			