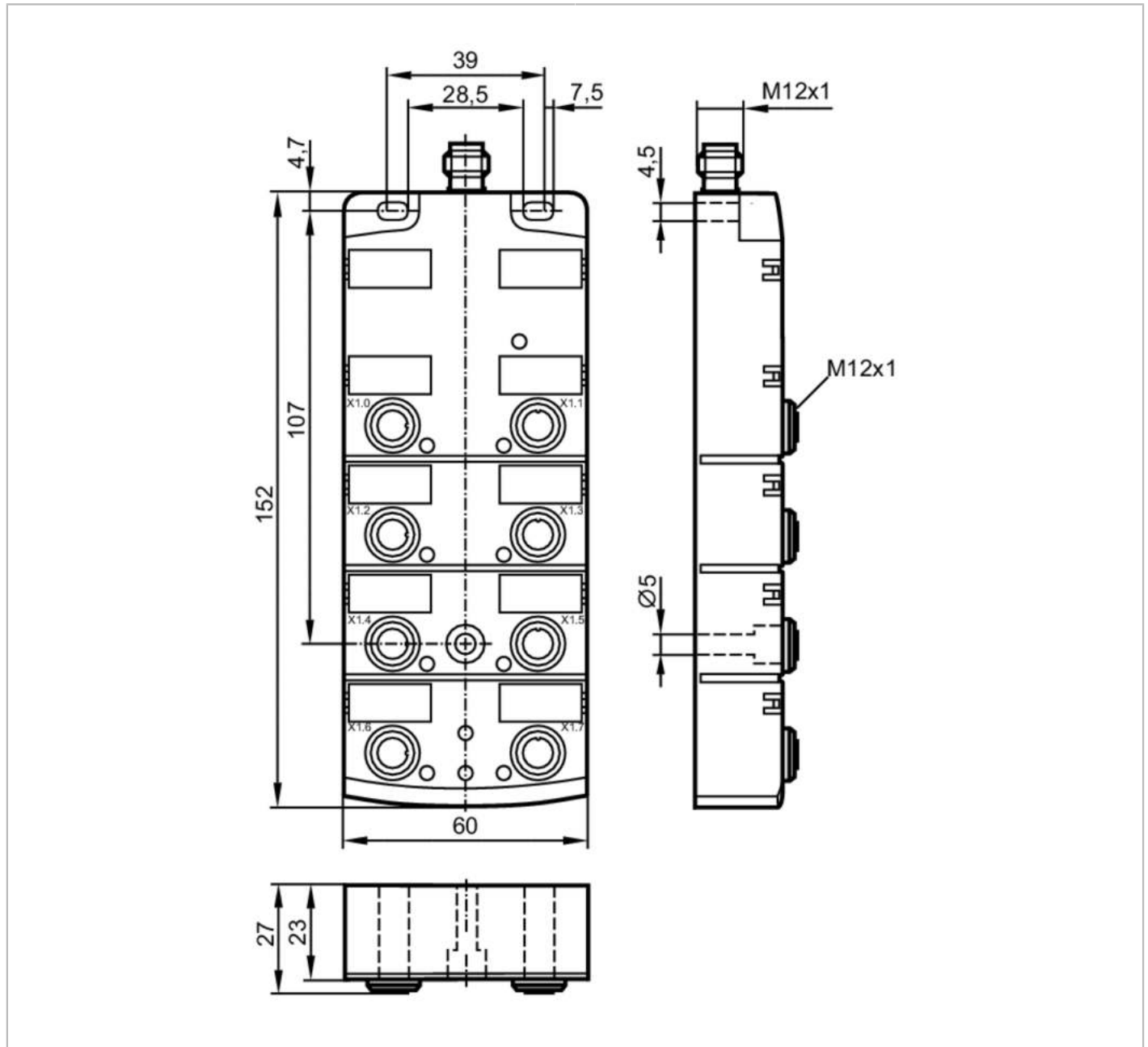


# AL2401



## IO-Link CompactLine module

IO-Link module 8 x 2 DI IP 67



Electrical data	
Operating voltage	[V] 18...30 DC; ("supply class 2" to cULus)
Current consumption	[mA] < 50
Sensor supply US	
Current rating per port	[A] 0.1
Inputs / outputs	
Number of inputs and outputs	Number of digital inputs: 16
Inputs	
Number of digital inputs	16; (8 x 2)
Input circuit of digital inputs	PNP

# AL2401



## IO-Link CompactLine module

IO-Link module 8 x 2 DI IP 67

Sensor supply of the inputs		IO-Link
Input current limitation	[mA]	15
Input current High	[mA]	6...10
Input current Low	[mA]	0...2
Switching level high	[V]	> 11
Digital inputs protected against short circuits		yes

### Interfaces

Communication interface		IO-Link
Supported DeviceIDs	Type of operation	DeviceID
	Default	555

### IO-Link Device

Transmission type		COM2 (38,4 kBaud)
IO-Link revision		1.1
SDCI standard		IEC 61131-9
SIO mode		no
Process data analogue		1
Process data binary		24
Min. process cycle time	[ms]	2.9

### Operating conditions

Ambient temperature	[°C]	-25...70
Protection		IP 67
Protection rating (NEMA 250)		6P
Chemical media	ISO 16750-5	AA, BA, BD, HLP, CC, DB, DC, DD, CA
	NEMA 250 5.13.1	AA

### Tests / approvals

EMC	EN 61000-6-2	
	EN 61000-6-3	
	IEC 61131-9	
MTTF	[years]	164

### Mechanical data

Weight	[g]	382.5
Materials		PA; socket: brass nickel-plated; O-ring: FKM
Sealing material		FKM

### Displays / operating elements

Display	operation	LED, green
	errors	LED, red
	function	LED, yellow

### Accessories

Accessories (optional)	Stainless steel sleeve, for installation in case of high mechanical stress , E70402
------------------------	---

### Remarks

Remarks	For use in NFPA 79 applications only
	The device is to be operated to IO-Link specification V1.1.2.
	The maximum cable length of the IO-Link cable is 20 m.
Pack quantity	1 pcs.

# AL2401

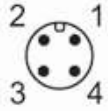


## IO-Link CompactLine module

IO-Link module 8 x 2 DI IP 67

### Electrical connection - IO-Link

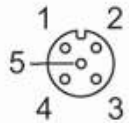
Connector: M12; coding: A



1	UB +
2	not used
3	UB -
4	IO-Link

### Electrical connection - Process connection

Connector: M12; coding: A; Sealing: FKM



1	Inputs X1.0...X1.7
2	Sensor supply +24 V
3	IN 2
4	Sensor supply 0 V
5	IN 1
5	not used