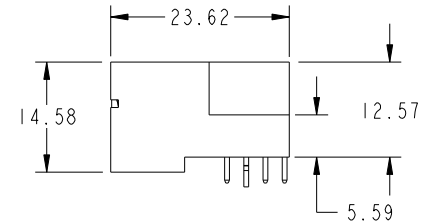
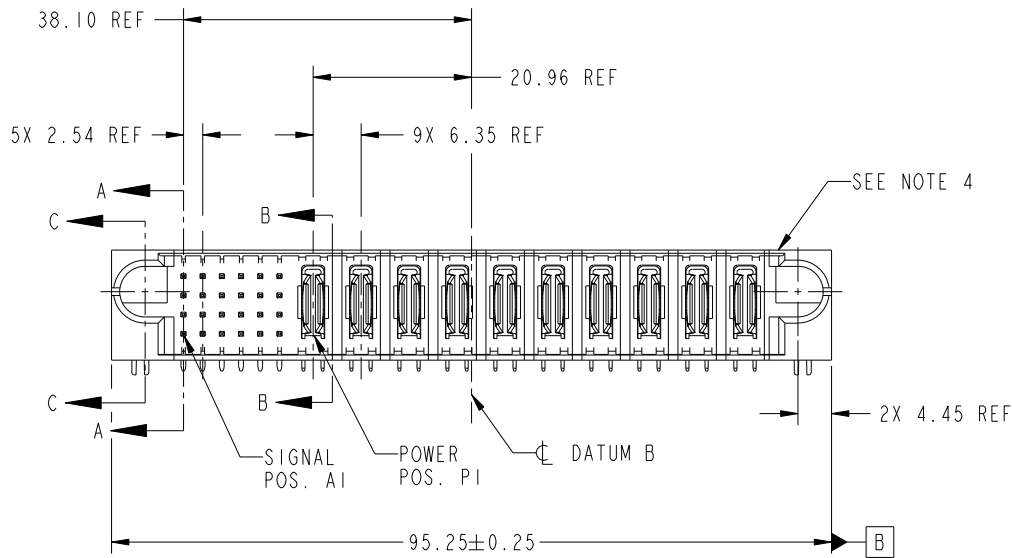
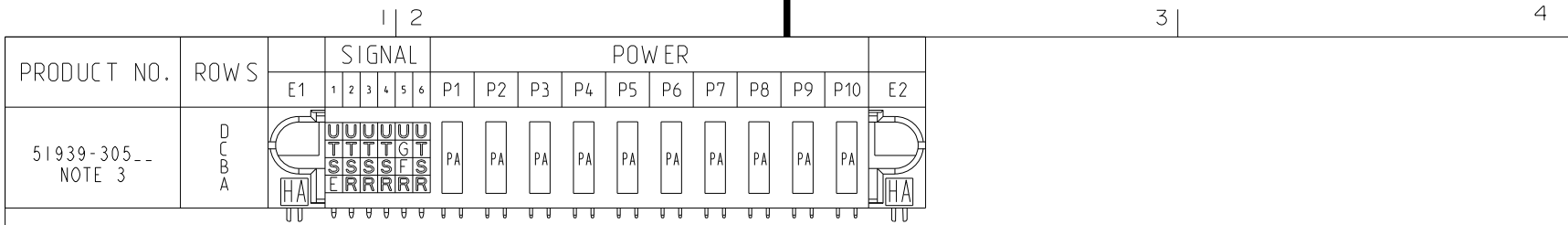


Tous droits strictement réservés. Reproduction ou communication a des tiers interdite sous quelque forme que ce soit sans autorisation écrite du propriétaire. Propriété de c.FCI. Droits de reproduction FCI.

All rights strictly reserved. Reproduction or issue to third parties in any form whatever is not permitted without written authority from the proprietor. Property of FCI. Copyright FCI.



CODE	DIM "M" MATING LENGTH	CONTACT TYPE
U	[6.86]	SIGNAL
T	[6.86]	SIGNAL
S	[6.86]	SIGNAL
R	[6.86]	SIGNAL
PA	[N/A]	POWER
HA	[N/A]	HOLD-DOWN
E	[5.59]	SIGNAL
F	[5.59]	SIGNAL
G	[5.59]	SIGNAL

mat'l code				SEE NOTE		tolerances unless otherwise specified		CUSTOMER	
ltr	ecn no.	dr	date	linear	0.X ±0.3	COPY		www.fciconnect.com title 24S + 10P RIGHT ANGLE SOLDER HEADER	
A	DG07-0289	JC	07/12/07	0.XX ±0.13	projection				
B	DG08-0266	W D	09/22/08	0.XXX ±0.051	angles				
					0° ±2°			product family PwrBlade code 213 size dwg no 51939-305 sheet 1 of 4	
				dr	Jerome Chen 06/29/07	MM		scale 1:1	
				enr	Jerome Chen 07/12/07				
				chr	Gary Hsieh 06/29/07				
				appd	Joseph Hsia 06/29/07				
sheet index	revision sheet	B 1	B 2	B 3	B 4				

A

A

B

B

1 | 2

Pro/E

PDM: Rev:B

STATUS: Released

Printed: Dec 20, 2010

cage code 28556

4

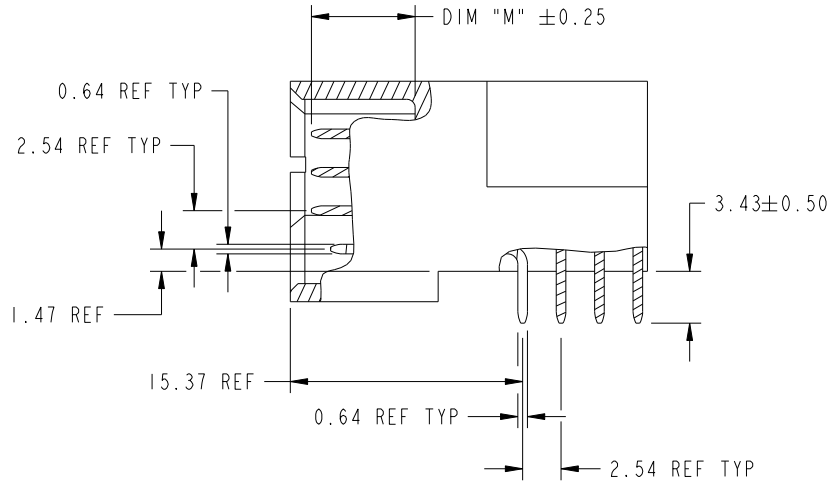
Tous droits strictement reserves. Reproduction ou communication a des tiers interdite sous quelque forme que ce soit sans autorisation ecrite du proprietaire. Propriete de c.FCI. Droits de reproduction FCI.

All rights strictly reserved. Reproduction or issue to third parties in any form whatever is not permitted without written authority from the proprietor. Property of FCI. Copyright FCI.

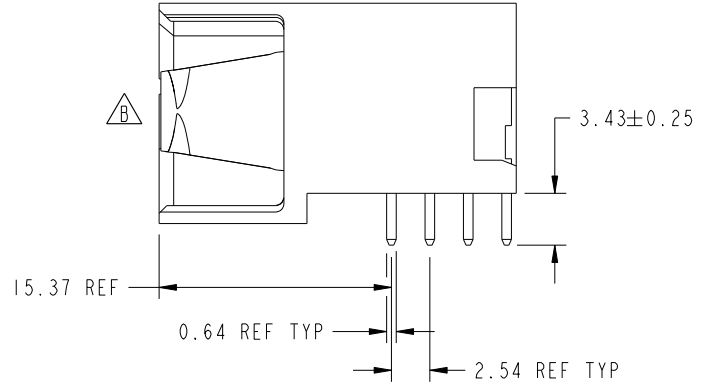


PRODUCT NUMBER

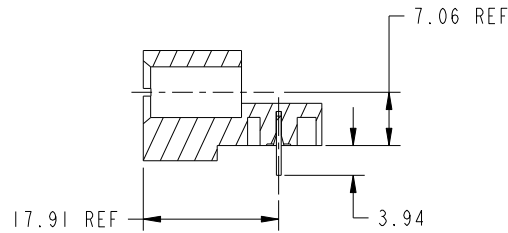
51939-305__
NOTE: 3



BROKEN-OUT SECTION A-A
SCALE 2:1



BROKEN-OUT SECTION B-B
SCALE 2:1



SECTION C-C

mat'l code		SEE NOTE		tolerances unless otherwise specified		CUSTOMER		 www.fciconnect.com	
ltr	ecn no.	dr	date	linear	0.X ± 0.3	COPY		title	
B				linear	0.XX ± 0.13	projection		24S + 10P	
				angles	0.XXX ± 0.051			RIGHT ANGLE SOLDER HEADER	
					0° ± 2°			product family	
				dr	Jerome Chen 06/29/07	MM		PwrBlade	
				enr	Jerome Chen 07/12/07			code	
				chr	Gary Hsieh 06/29/07	1:1		213	
				appd	Joseph Hsia 06/29/07			sheet	
sheet index		revision sheet						A 51939-305	
								2 of 4	

cage code 28506

Pro/E

PDM: Rev: B

STATUS: **Released**

Printed: Dec 20, 2010

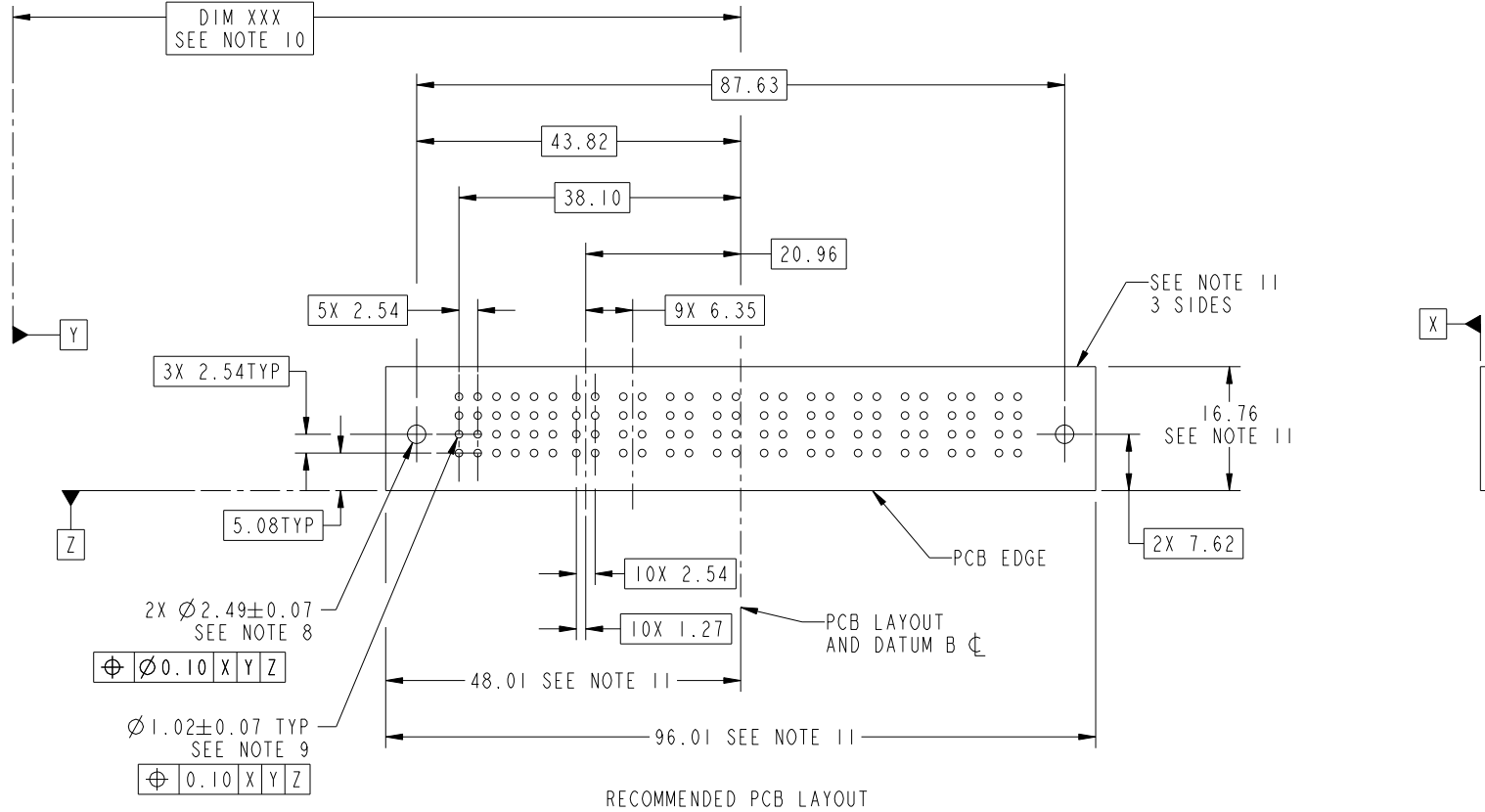
Tous droits strictement reserves. Reproduction ou communication a des tiers interdite sous quelque forme que ce soit sans autorisation écrite du propriétaire. Propriete de c.FCI. Droits de reproduction FCI.

All rights strictly reserved. Reproduction or issue to third parties in any form whatever is not permitted without written authority from the proprietor. Property of FCI. Copyright FCI.



PRODUCT NUMBER

51939-305__
NOTE: 3



RECOMMENDED PCB LAYOUT

mat'l code		SEE NOTE		tolerances unless otherwise specified		CUSTOMER		 www.fciconnect.com	
ltr	ecn no.	dr	date	linear	0.X ±0.3	COPY		 title 24S + 10P RIGHT ANGLE SOLDER HEADER	product family PwrBlade code 213 size dwg no 51939-305 sheet 3 of 4
B					0.XX ±0.13	projection			
					0.XXX ±0.051	 MM			
				angles	0° ±2°	scale			
				dr	Jerome Chen 06/29/07	1:1			
				enr	Jerome Chen 07/12/07				
				chr	Gary Hsieh 06/29/07				
				appd	Joseph Hsia 06/29/07				
sheet index	revision sheet								

cage code 2856

Pro/E

PDM: Rev:B

STATUS: Released

Printed: Dec 20, 2010

Tous droits strictement réservés. Reproduction ou communication a des tiers interdite sous quelque forme que ce soit sans autorisation écrite du propriétaire. Propriété de c.FCI. Droits de reproduction FCI.

All rights strictly reserved. Reproduction or issue to third parties in any form whatever is not permitted without written authority from the proprietor. Property of FCI. Copyright FCI.



1 | 2

3

4

PRODUCT NUMBER

51939-305__
NOTE: 3

NOTES:

1. DIMENSIONS AND TOLERANCES ARE IN ACCORDANCE WITH ASME Y14.5M, 1994 UNLESS OTHERWISE SPECIFIED.

CONNECTOR NOTES:

- 2. HOUSING MATERIAL: UL 94 V-0 GLASS FILLED HIGH-TEMP THERMOPLASTIC
POWER CONTACT MATERIAL: COPPER ALLOY
SIGNAL PIN MATERIAL: COPPER ALLOY

△ B 3. SEE ITEM 1 & 2 IN PRINT 10064183 FOR PLATING SPEC OF 51939-305 AND 51939-305LF RESPECTIVELY.

- 4. MANUFACTURER'S NAME, P/N, AND DATE CODE TO APPEAR ON THIS SURFACE.
- 5. PRODUCT SPECIFICATION GS-12-149.
APPLICATION SPECIFICATION BUS-20-067.
- 6. PACKAGED IN TRAYS.

PCB NOTES:

- 7. ALL HOLE DIAMETERS ARE FINISHED HOLE SIZE.
- 8. MOUNTING HOLES, WHERE APPLICABLE, ARE UNPLATED.
- 9. $\varnothing 1.151 \pm 0.025$ DRILLED HOLES PLATED WITH
0.008 MIN SnPb OR Sn OVER 0.03 TO 0.08 Cu PLATING TO ACHIEVE $\varnothing 1.02 \pm .07$ HOLE.
- 10. "DIM XXX" TO BE DETERMINED BY THE CUSTOMER.
- 11. CONNECTOR KEEP-OUT ZONE.
- 12. A △ B SYMBOL WILL BE NEXT TO ANY DIMENSION, VIEW, OR NOTE WHICH HAS BEEN MODIFIED WITH THE CURRENT DRAWING REVISION.

mat'l code		SEE NOTE		tolerances unless otherwise specified		CUSTOMER		 www.fciconnect.com		
ltr	ecn no.	dr	date	linear	0.X ±0.3		COPY		title 24S + 10P RIGHT ANGLE SOLDER HEADER	
B					0.XX ±0.13		projection			
					0.XXX ±0.051					
				angles	0° ±2°				product family PwrBlade	
				dr	Jerome Chen	06/29/07	MM			code
				enrg	Jerome Chen	07/12/07				213
				chr	Gary Hsieh	06/29/07	scale			sheet
				appd	Joseph Hsia	06/29/07	1:1			4 of 4
sheet index	revision sheet									size A 51939-305

1 | 2

Pro/E

PDM: Rev: B

STAT: Released

Printed: Dec 20, 2010