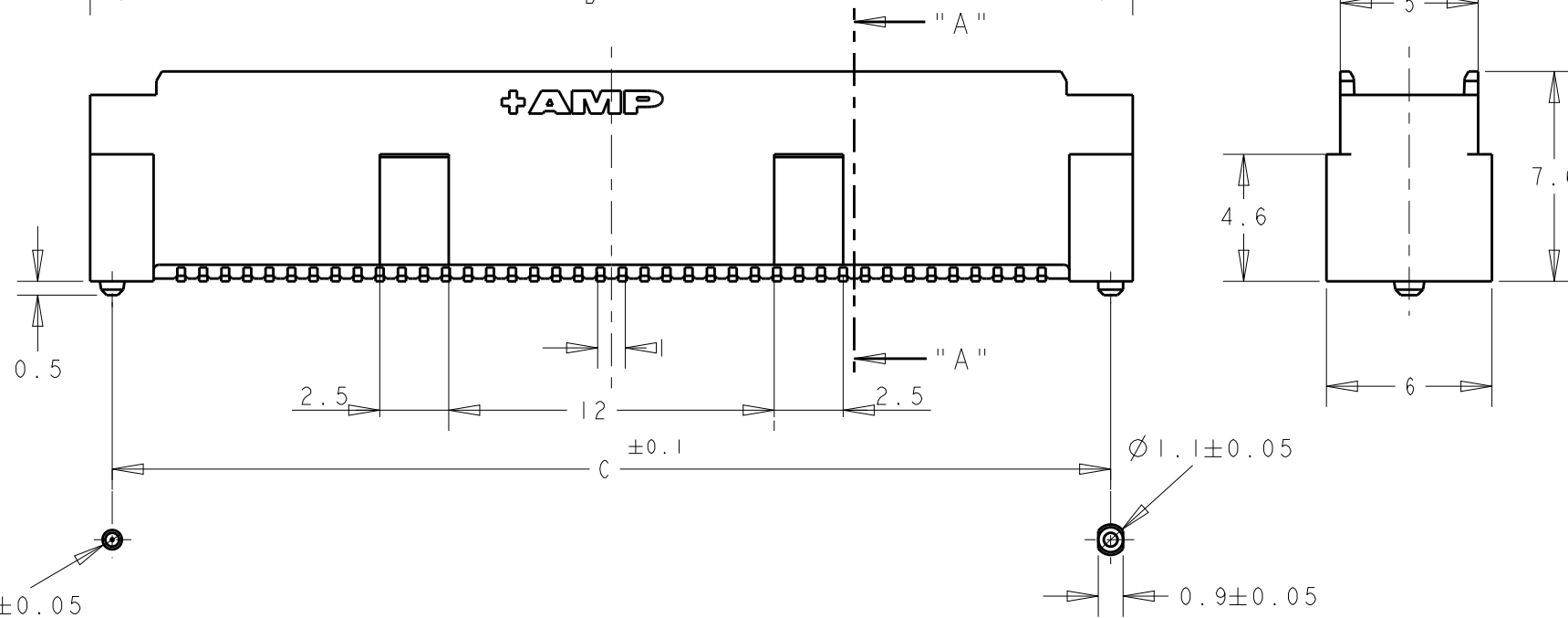
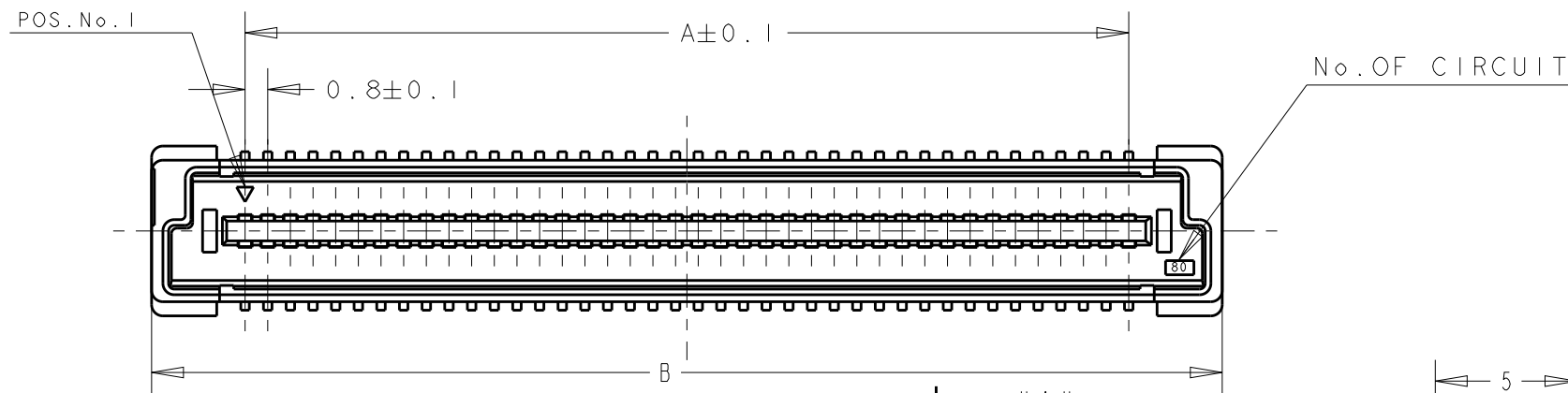
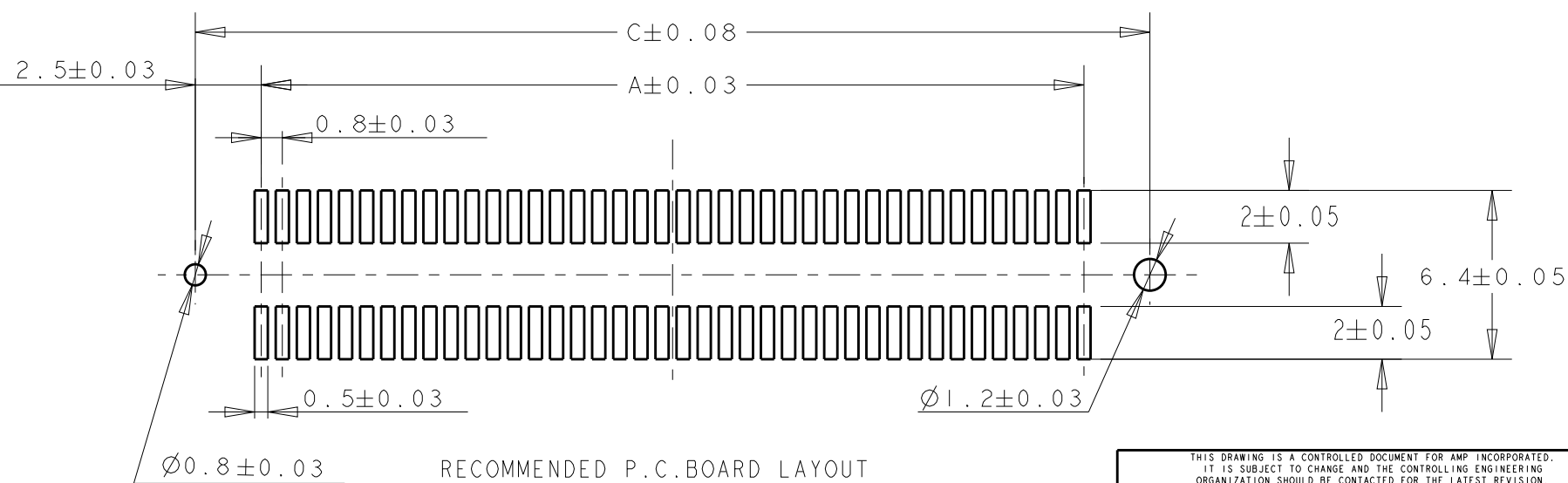


| LOC | DIST | REVISIONS | | | |
|-----|------|-----------------------------|-----------|------|------|
| P | LTR | DESCRIPTION | DATE | DWN | APVD |
| DY | - | B REVISED PER ECO-17-005660 | 21APR2017 | B. J | S. Y |



NOTES:

1. MATERIAL:
HOUSING: L.C.P. (HIGH TEMP. THERMOPLASTIC)
UL 94V-0, NATURAL.
CONTACT: BRASS.
2. FINISH:
CONTACT AREA: 0.00076 MIN GOLD ON
0.0013 MIN ALL OVER NICKEL.
SOLDERING AREA: 0.002 MIN MATTE-TIN.
3. POSITION SERIES: SEE TABLE.
4. CONN STACK HEIGHT COMBINE OF PLUG "Y" H VS REC "X" H.
STACK HEIGHT = Y + X - 5
5. CONNECTOR WITH BLACK HOUSING



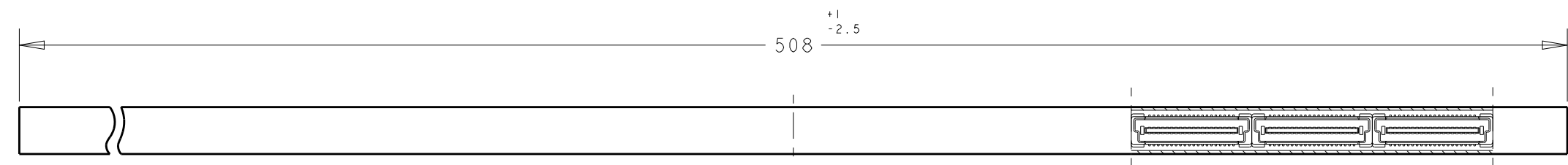
LOW HALOGEN

| | | | |
|---|--|--------------------------------|---|
| THIS DRAWING IS A CONTROLLED DOCUMENT FOR AMP INCORPORATED. IT IS SUBJECT TO CHANGE AND THE CONTROLLING ENGINEERING ORGANIZATION SHOULD BE CONTACTED FOR THE LATEST REVISION. | | DWN FLORENCE TAN 14SEP04 | AMP Tyco Electronics Singapore |
| DIMENSIONS: mm | | CHK ERIC TNG | |
| TOLERANCES UNLESS OTHERWISE SPECIFIED: 0 PLC ± 1 PLC ±0.30 2 PLC ±0.25 3 PLC ±0.20 4 PLC ± ANGLES ±3° | | APVD SEIFONG | NAME PLUG ASSY FOR FH 0.8 BTB CONNECTOR 8H 0.5 BOSS LENGTH (0.76um GOLD) |
| MATERIAL | | PRODUCT SPEC 108-5390 | SIZE A3 |
| FINISH | | APPLICATION SPEC 114-5254 | CAGE CODE 00779 |
| 1 | | WEIGHT - | DRAWING NO 6123002 |
| 2 | | CUSTOMER DRAWING | SCALE 4:1 SHEET 1 OF 2 REV B |

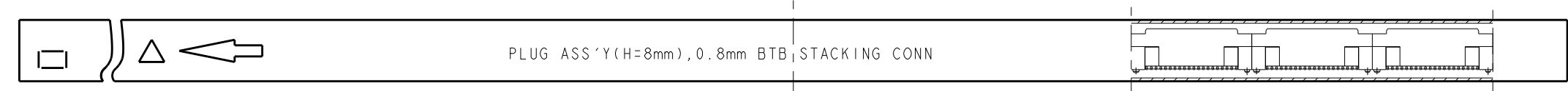
P/N SEE SHEET 2 OF 2

THIS DRAWING IS UNPUBLISHED. RELEASED FOR PUBLICATION .19 .
 BY AMP INCORPORATED. ALL RIGHTS RESERVED.

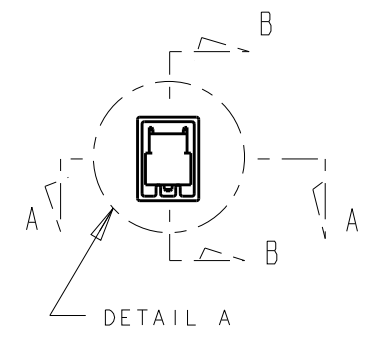
| LOC | DIST | REVISIONS | | | | | |
|-----|------|-----------|-----|----------------|------|-----|------|
| DY | - | P | LTR | DESCRIPTION | DATE | DWN | APVD |
| | | - | | SEE SHT 1 OF 2 | - | - | - |



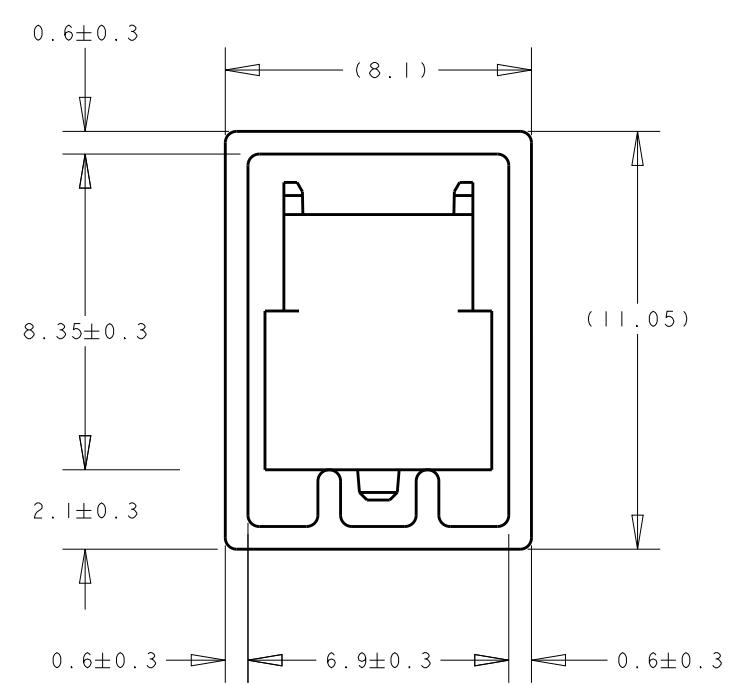
SECT A-A



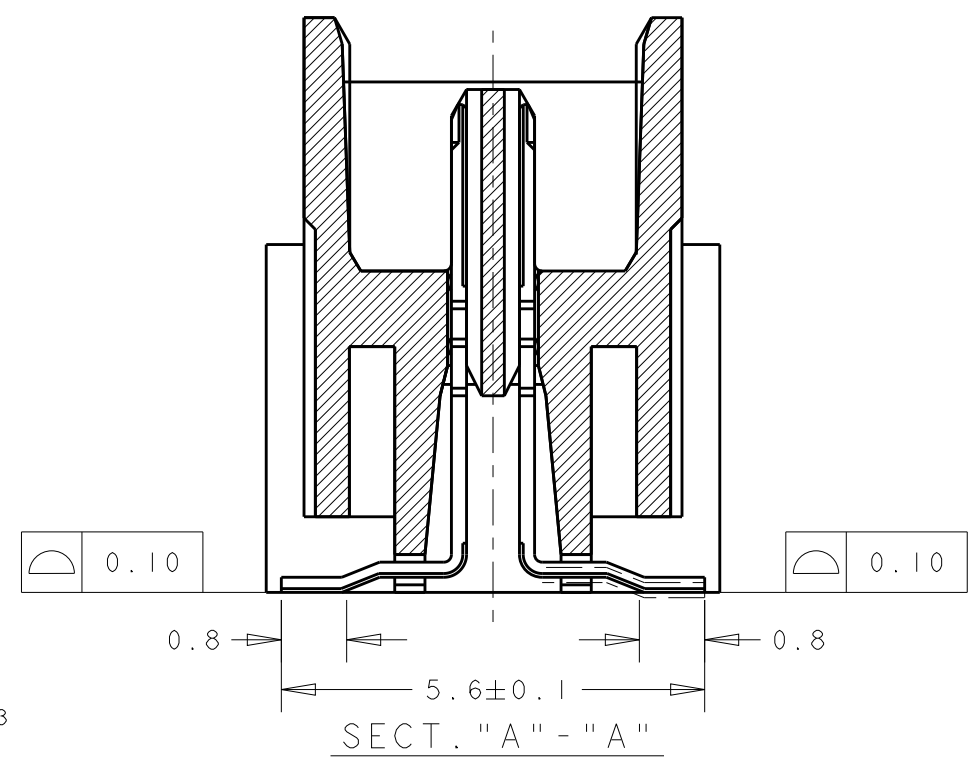
SECT B-B



REFERENCE PICTURE OF TUBE PACK



DETAIL "B"
(SCALE 5-1)



SECT. "A" - "A"

| | | | | | | | | |
|--------|---------------|----------|------|------|------|-----------|----------|----|
| 5 | AVAILABLE | 16 | 28.2 | 29.8 | 23.2 | 60 | 2- | -1 |
| | NOT AVAILABLE | 14 | 32.2 | 33.8 | 27.2 | 70 | 1- | -1 |
| | AVAILABLE | 5 | 84.2 | 85.8 | 79.2 | 200 | 1- | -0 |
| | | 6 | 76.2 | 77.8 | 71.2 | 180 | | -9 |
| | | 6 | 68.2 | 69.8 | 63.2 | 160 | | -8 |
| | | 7 | 60.2 | 61.8 | 55.2 | 140 | | -6 |
| | | 9 | 52.2 | 53.8 | 47.2 | 120 | | -5 |
| | | 10 | 44.2 | 45.8 | 39.2 | 100 | | -4 |
| | | 12 | 36.2 | 37.8 | 31.2 | 80 | | -3 |
| | | 16 | 28.2 | 29.8 | 23.2 | 60 | | -2 |
| 22 | 20.2 | 21.8 | 15.2 | 40 | | 6123002-1 | | |
| STATUS | | QTY/TUBE | C | B | A | POS. | CONN P/N | |

LOW HALOGEN

THIS DRAWING IS A CONTROLLED DOCUMENT FOR AMP INCORPORATED. IT IS SUBJECT TO CHANGE AND THE CONTROLLING ENGINEERING ORGANIZATION SHOULD BE CONTACTED FOR THE LATEST REVISION.

DWN: FLORENCE TAN 13SEP04
 CHK: ERIC TNG
 APVD: SEIFONG

NAME: AMP Tyco Electronics Singapore
 PRODUCT SPEC: 108-5390
 APPLICATION SPEC: 114-5254
 WEIGHT: -

SIZE: A3 CAGE CODE: 00779 DRAWING NO: 6123002
 SCALE: 4:1 SHEET: 2 OF 2 REV: B

CUSTOMER DRAWING