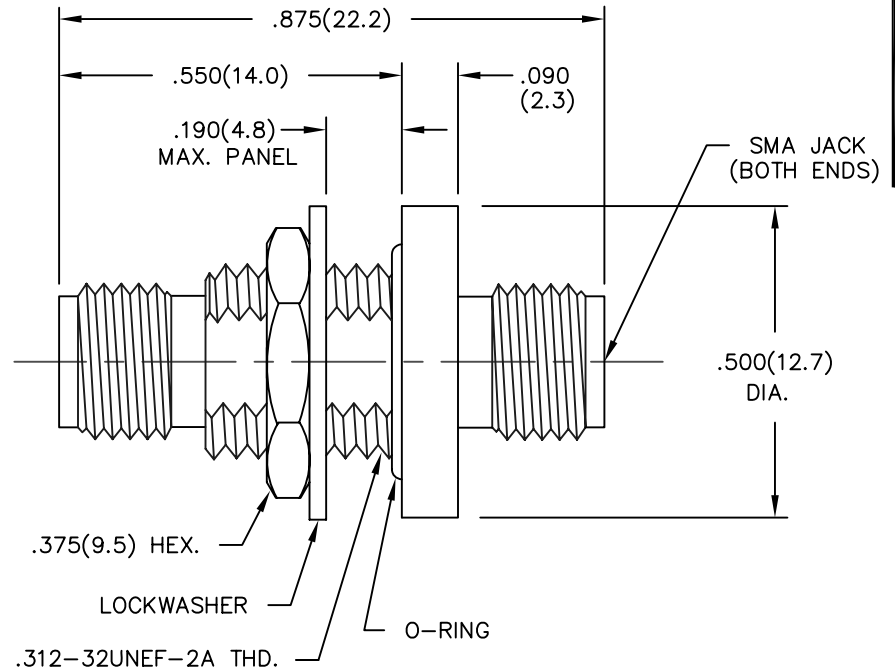
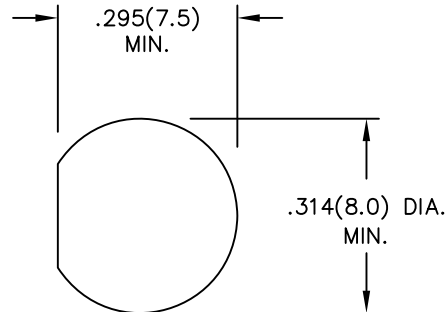


MODEL NUMBER
ADT-2824-FF-SMA-02

NOTES:

- 1.0 MATERIALS:
 - 1.1 HOUSING, NUT & LOCKWASHER: STAINLESS STEEL PER ASTM-A582, TYPE 303.
 - 1.2 CENTER CONTACT: BERYLLIUM COPPER ROD ALLOY C172, PER ASTM-B196.
 - 1.3 DIELECTRIC: PTFE FLUOROCARBON PER ASTM-D1457.
- 2.0 PLATING:
 - 2.1 HOUSING, NUT & LOCKWASHER: PASSIVATED PER MIL-F-14072 & QQ-P-35
 - 2.2 CENTER CONTACT: GOLD PER MIL-G-45204, TYPE II, CLASS 2.
- 3.0 MECHANICAL:
 - 3.1 INTERFACE PER MIL-STD-348 IN ACCORDANCE WITH MIL-A-55339/28
 - 3.1 CENTER CONTACT CAPTURED IN ACCORDANCE WITH MIL-A-55339/28
- 4.0 ELECTRICAL:
 - 4.1 FREQUENCY RANGE: DC-18.0 GHz
 - 4.2 VSWR MAXIMUM: 1.10 +.01f(GHz)
 - 4.3 WILL MEET OR EXCEED THE ELECTRICAL SPECIFICATIONS OF MIL-A-55339/28.
- 5.0 DIMENSIONS IN PARENTHESIS ARE IN MILLIMETERS.



REV.	DESCRIPTION	DATE
-	RELEASED	9/22/94
A	ECN 17503	4/24/00

NOTICE: The information contained in this drawing is proprietary and must not be used without the permission of Emerson Network Power.

UNLESS OTHERWISE NOTED DIMENSIONS ARE IN INCHES AND TOLERANCES ARE:
 3 PLACE DECIMALS ±.005
 2 PLACE DECIMALS ±.02
 FRACTIONS ±1/64
 PARALLELITY: T.I.R.
 FLATNESS: T.I.R.
 CONCENTRICITY: T.I.R.
 ANGLES AND PERPENDICULARITY: ±1°

CAGE CODE 34078		MIDWEST MICROWAVE	
		TITLE ADAPTER - SMA JACK TO JACK BULKHEAD OUTLINE DRAWING	
		DRAWING NUMBER ADT-2824-FF-SMA-02-01	REV. A
DRAWN/DATE A.BEATTY 9/19/94 CHECKED/DATE M.HOLLMAN 9/21/94	ENG./DATE A.OSGA 9/21/94 APPROVED/DATE C.RIGGE 4/7/00	SCALE: 5=1	SHEET 1 of 1