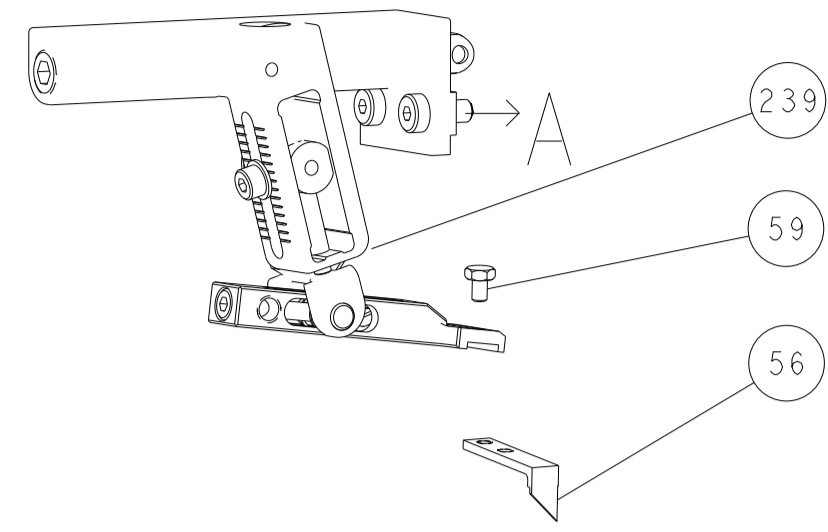
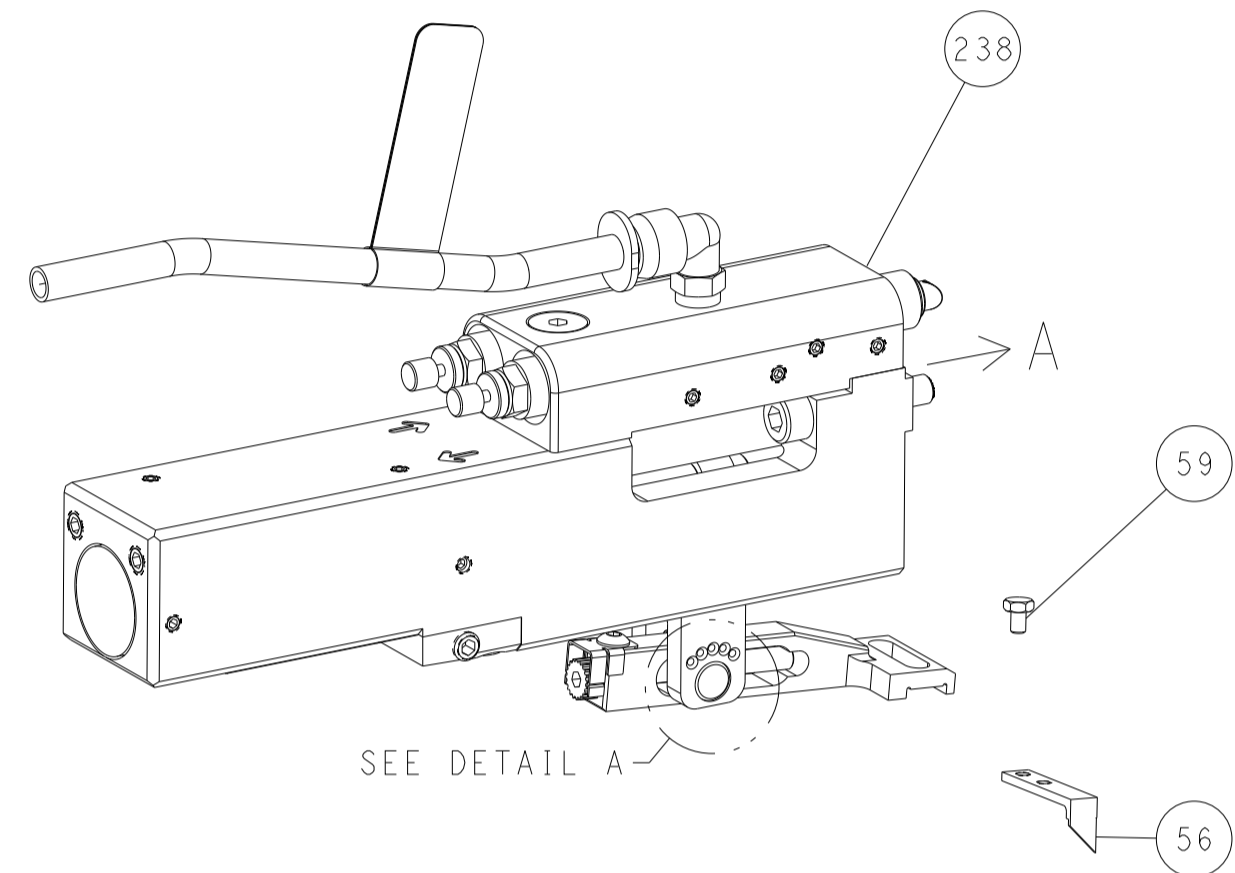


LOC		DIST		REVISIONS			
A	66	P	LTN	DESCRIPTION	DATE	DWN	APVD
		-		SEE SHEET 1			

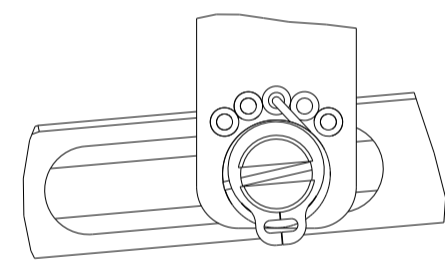
FEED TYPE MECHANICAL



PNEUMATIC

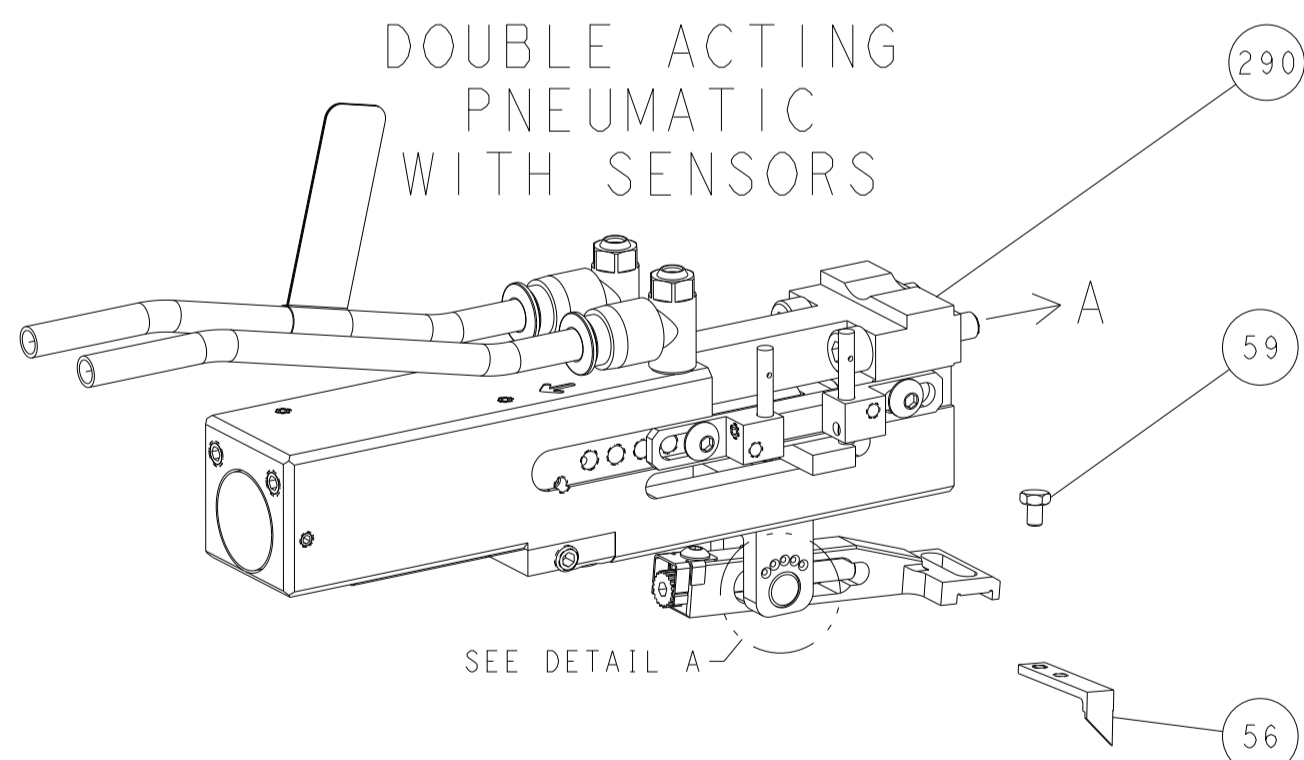


FEED SPRING SETTING POSITION (SHOWN FROM REAR SIDE)

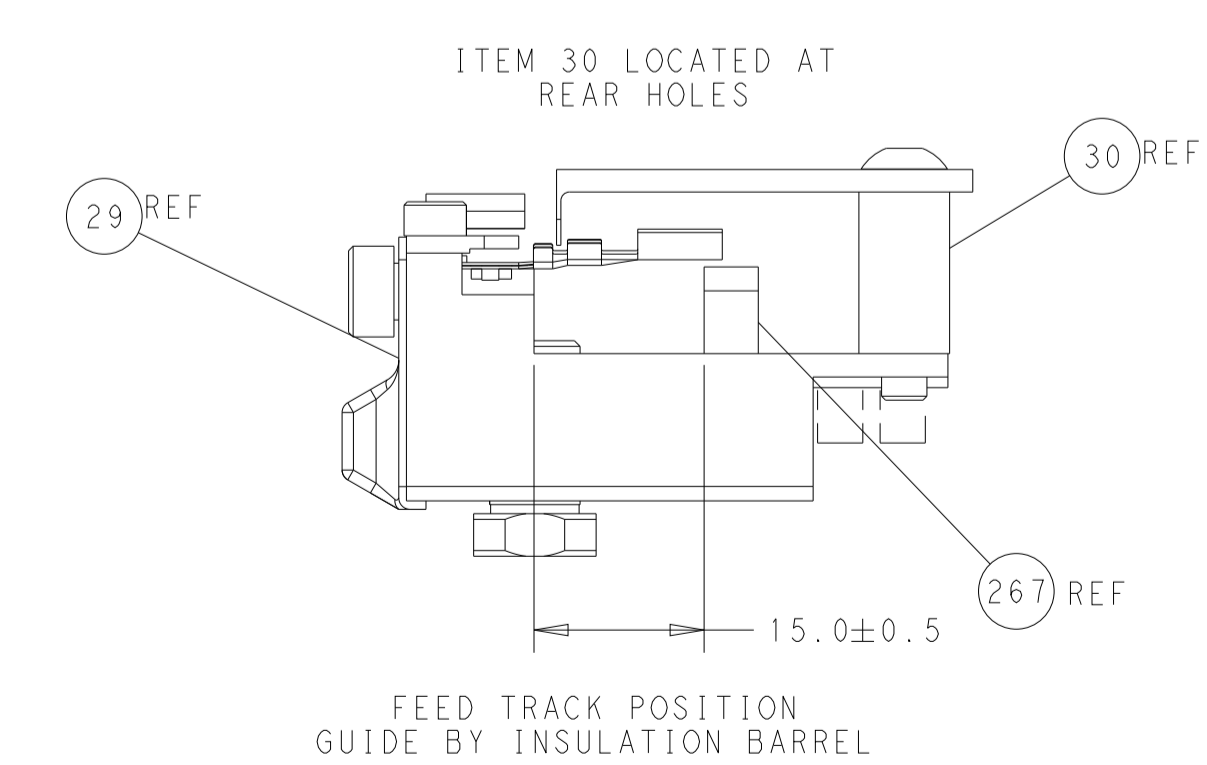
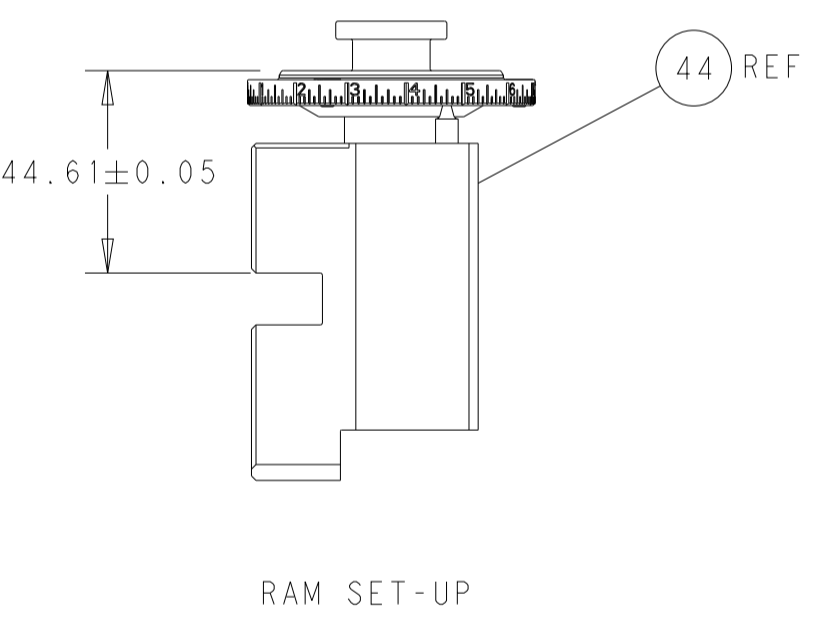
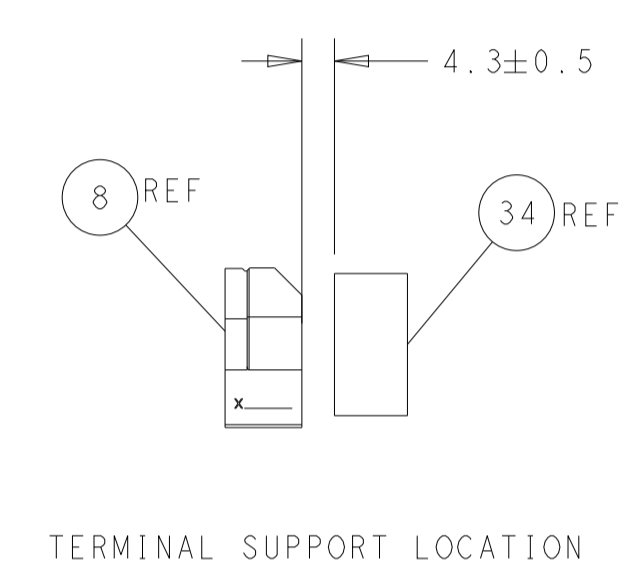
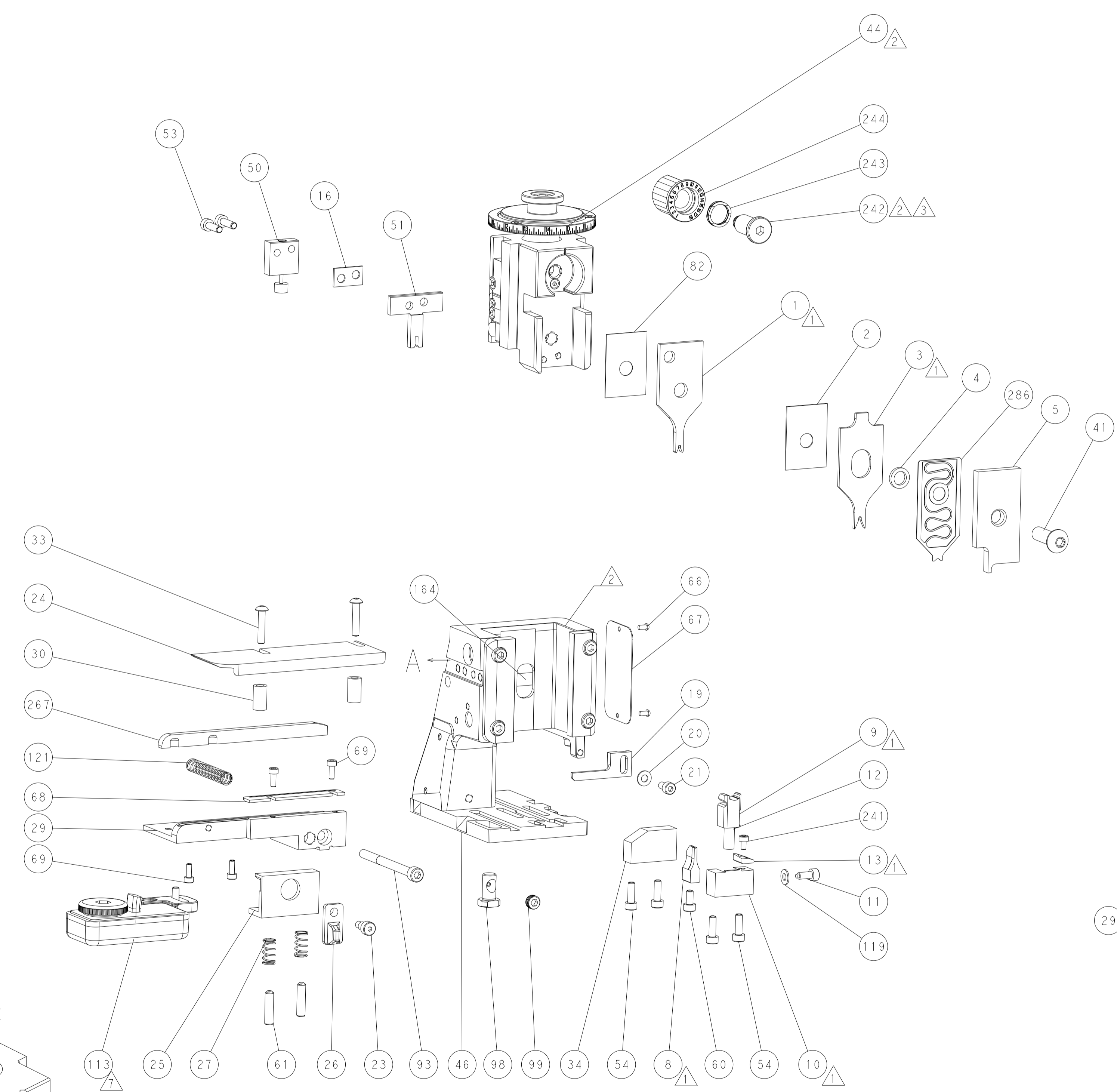
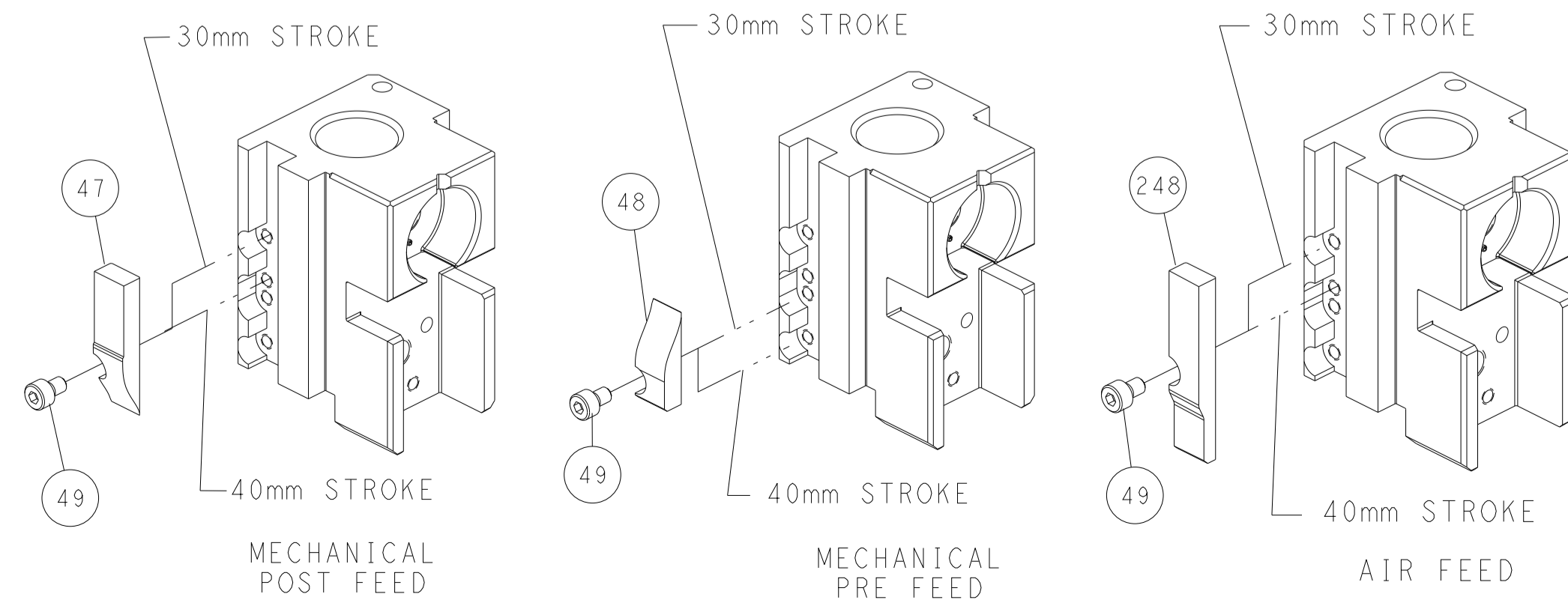


DETAIL A

DOUBLE ACTING PNEUMATIC WITH SENSORS



CAM POSITIONS

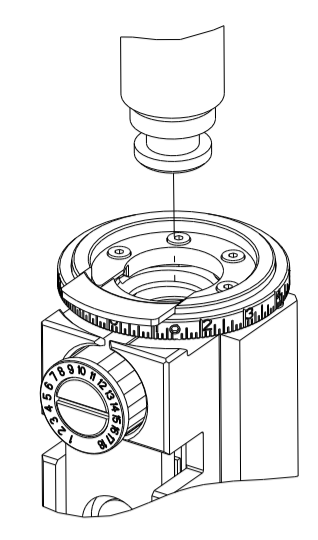


ATLANTIC VERSION
 Shown on sheets 1 of 4 & 2 of 4
 (Pacific version shown on sheets 3 of 4 & 4 of 4)

DIMENSIONS:		TOLERANCES UNLESS OTHERWISE SPECIFIED:		DWN		TE Connectivity	
mm	0 PLC ±	1 PLC ±	2 PLC ±	3 PLC ±	4 PLC ±	APVD	14NOV2011
	ANGLES	FINISH		NAME	Ocean Side Feed Applicator		
MATERIAL				SIZE	CAGE CODE	DRAWING NO	RESTRICTED TO
				AA	00779	©=2151540	
CUSTOMER ACCESSIBLE PRODUCTION DRAWING				SCALE	1:2	SHEET	2 OF 4
				REV	P1		

PART NUMBER	REVISION	DESCRIPTION	FEED TYPE
2-2151540-1	P	FINE CRIMP HEIGHT ADJUST	MECHANICAL
2-2151540-2	P	FINE CRIMP HEIGHT ADJUST	PNEUMATIC
4-2151540-2	P	FINE CRIMP HEIGHT ADJUST	DOUBLE ACTING PNEUMATIC WITH SENSORS
7-2151540-7	J	CRIMP TOOLING KIT	-

PACIFIC VERSION TERMINATOR INTERFACE ADAPTER



APPLICATOR DATA		
CRIMP	SIZE	TYPE
WIRE	1.40 mm [.055]	F
INSUL	1.78 mm [.070]	O

APPLICATOR INSTRUCTIONS
408-35042

TERMINAL DATA: SIEMENS TERMINAL TE CRIMP SPECIFICATION			
TERMINAL NAME: FEMALE TERMINAL			
WIRE STRIP LENGTH	INSULATION DIAMETER RANGE		
4.10-4.70 mm [1.61-.185 IN]	Ø1.10-1.65 mm [.043-.065 IN]		
TERMINAL APPLICATION SPECIFICATION	114-13060		
TERMINALS APPLIED			
TE TERMINAL	SIEMENS TERMINAL	TE TERMINAL	SIEMENS TERMINAL
1393364-1	V23540X7000Y10	1-1438299-0	
1393367-1	V23540X7000Y11	1393364-2	
1438299-2	V23540X7000Y31	1393367-2	
1438299-1	V23540X7000Y30		

WIRE SIZE	CRIMP HEIGHT mm [INCH]	CRIMP HEIGHT REFERENCE SETTING
0.35mm2	0.97 +/- 0.04 [.038 +/- .002]	7.7
22 AWG	0.95 +/- 0.04 [.037 +/- .002]	7.9
0.22mm2	0.89 +/- 0.04 [.035 +/- .002]	8.7

- 1 RECOMMENDED SPARE PARTS
- 2 REFER TO SUPPLIED INSTRUCTION SHEET FOR CLEANING, LUBRICATION AND STORAGE OF APPLICATOR.
- 3 APPLY PART NUMBER 2-23419-6 LOCTITE TO THREADS OF ITEM 242.
- 4 CRIMP HEIGHT REFERENCE SETTING WAS THE SETTING USED WHEN THE APPLICATOR WAS QUALIFIED AT THE FACTORY. ADJUSTMENT MAY BE NECESSARY WHEN RUNNING APPLICATOR IN THE FIELD.
- 5 THIS APPLICATOR IS EQUIPPED WITH THE DOUBLE ACTING FEED WITH SENSORS AND IS APPLICATION SPECIFIC AND DOES NOT REQUIRE ITEMS 49 & 151.
- 6 UNLESS SPECIFIED OTHERWISE TORQUE VALUES SHALL BE USED PER DOCUMENT, 101-35000.
- 7 TERMINAL LUBRICANT IS RECOMMENDED.

***WARNING**
ON INSTALLATION, SET WIRE DISC TO CRIMP HEIGHT REFERENCE SETTING FOR LARGEST WIRE SIZE. CRIMP HEIGHT REFERENCE SETTINGS GREATER THAN THE VALUE SHOWN MAY CAUSE DAMAGE TO THE CRIMP TOOLING, REFER TO THE INSTRUCTION SHEET FOR PROPER SETUP AND ADJUSTMENTS.

PACIFIC VERSION
Shown on sheets 3 of 4 & 4 of 4
(Atlantic version shown on sheets 1 of 4 & 2 of 4)

LOC	DIST	REV	DATE	BY	CHKD	APVD
A	66					

REV	DATE	BY	CHKD	APVD	DESCRIPTION	ITEM NO
-	1	-	-	-	2844950-1 AIR FEED MODULE	290
-	1	1	1	-	2119791-5 DEPRESSOR, WIRE	286
-	1	1	1	-	1633782-2 FENCE	267
-	1	1	1	-	2119082-8 CAM, SNAIL, INSULATION ADJUSTMENT	244
-	1	1	1	-	2079764-1 WASHER, WAVE SPRING, CREST-TO-CREST	243
-	1	1	1	-	2119083-1 RETAINER, INSULATION DIAL	242
-	1	1	1	-	18023-1 SCR, SKT HD CAP M3 X 5.0	241
-	-	-	-	-	2119580-1 MECHANICAL FEED ASSEMBLY	239
-	-	1	-	-	2844940-1 AIR FEED MODULE	238
-	REF	REF	REF	-	994970-2 COUNTER, MAGNETIC	164
-	-	1	-	-	2119641-2 FEED CAM, AIR FEED	151
-	1	1	1	-	2168083-8 SCR, SKT HD CAP, RoHS, M4 X 16	144
-	4	4	4	-	2168083-9 SCR, SKT HD CAP, RoHS, M4 X 20	143
-	-	-	-	-	2119653-2 FEED CAM, POST FEED	142
-	1	1	1	-	1-1803583-0 APPLICATOR BASIC ASSEMBLY, SF	141
-	1	1	1	-	1803516-1 RAM ASSEMBLY, SF PACIFIC	140
-	1	1	1	-	1-22281-8 SPRING, COMPRESSION	121
-	1	1	1	-	1-18028-2 WASHER, FLAT, REG M4	119
-	1	1	1	-	2119955-1 ASSY, LUBRICATOR, SIDE FEED	113
-	1	1	1	-	2844908-1 SCREW, LOCKING	99
-	1	1	1	-	2844907-1 POST, LOCKING	98
-	1	1	1	-	2168083-6 SCR, SKT HD CAP, RoHS, M5 X 65	93
-	1	1	1	-	455888-4 SPACER, CRIMPER	82
-	1	1	1	-	1803607-3 DOCUMENTATION PACKAGE	71
-	4	4	4	-	2168083-1 SCR, SKT HD CAP, RoHS, M3 X 8.0	69
-	1	1	1	-	2-690438-2 FRONT STRIP GUIDE	68
-	1	1	1	-	2119740-1 TAG, IDENTIFICATION	67
-	2	2	2	-	2168078-1 SCREW, DRIVE, RH, RoHS, 2 x .188	66
-	2	2	2	-	2-18032-5 SCR, SET, FLT PNT, M5 X 20.0	61
-	1	1	1	-	5-18022-5 SCR, HEX HD CAP, M4 X 6.0	59
-	1	1	1	-	1338685-1 PAWL, FEED	56
-	2	2	2	-	2-2168083-5 SCR, SKT HD CAP, RoHS, M4 X 14	53
-	1	1	1	-	1-1463053-0 HOLDER, TERMINAL	51
-	1	1	1	-	1803382-6 HOLD DOWN, SPRING LOADED	50
-	-	1	2	-	18023-9 SCR, SKT HD CAP M4 X 6.0	49
-	-	-	-	-	2119652-1 FEED CAM, PRE FEED	48
-	1	1	1	-	1803602-1 SCR, BHSC, RoHS (M8 X 25)	41
-	1	1	1	-	1-1752356-8 SUPPORT, TERMINAL	34
-	2	2	2	-	2079383-5 SCR, BHSC, RoHS (M4 X 20)	33
-	2	2	2	-	2-2844962-6 SPACER, CYLINDRICAL, STRIP GUIDE	30
-	1	1	1	-	2844938-5 PLATE, STRIP GUIDE	29
-	2	2	2	-	22281-8 SPRING, COMPRESSION	27
-	1	1	1	-	356835-1 LEVER, DRAG RELEASE	26
-	1	1	1	-	240792-2 DRAG, TERMINAL	25
-	1	1	1	-	1320928-6 STRIP GUIDE	24
-	1	1	1	-	980371-4 SCR, SKT HD SHLDR 5.0 DIA X 6.0	23
-	1	1	1	-	2168083-2 SCR, SKT HD CAP, RoHS, M4 X 8.0	21
-	1	1	1	-	1-18028-2 WASHER, FLAT, REG M4	20
-	1	1	1	-	2119533-1 STRIPPER, SIDE FEED	19
-	1	1	1	-	6-240641-7 SPACER	16
-	1	1	1	-	2119806-1 INSERT, SHEAR	13
-	1	1	1	-	3-22280-3 SPRING, COMPRESSION	12
-	1	1	1	-	1-356885-4 STOP, SHEAR	11
-	1	1	1	-	2119805-1 SHEAR HOLDER, FRONT	10
-	1	1	1	-	1-318707-4 FLOATING SHEAR, FRONT	9
-	1	1	1	-	1-1333201-9 ANVIL, COMBINATION	8
-	-	-	-	-	-	7
-	-	-	-	-	-	6
-	1	1	1	-	2119757-2 DEPRESSOR, SHEAR	5
-	1	1	1	-	2-238011-2 BLOCK, CRIMPER SPACER	4
-	1	1	1	-	3-1633966-0 CRIMPER, INSULATION O	3
-	1	1	1	-	455888-7 SPACER, CRIMPER	2
-	1	1	1	-	3-1803224-5 CRIMPER, WIRE	1

DIMENSIONS:		TOLERANCES UNLESS OTHERWISE SPECIFIED:		MATERIAL:		FINISH:		WEIGHT:		SCALE:		SHEET:		REV:	
mm	0 PLC ±	1 PLC ±	2 PLC ±	3 PLC ±	4 PLC ±	ANGLES	FINISH			AI	00779	C=2151540	3	4	P1

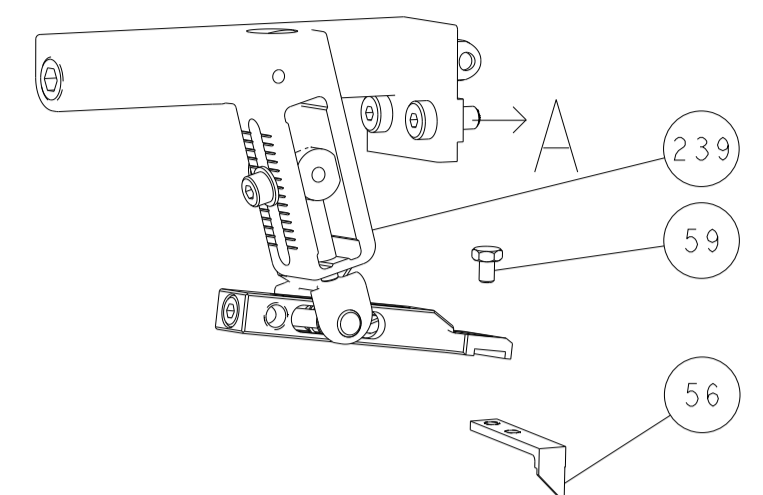
STE TE Connectivity
Harrisburg, PA 17105-3608

Ocean Side Feed
Applicator

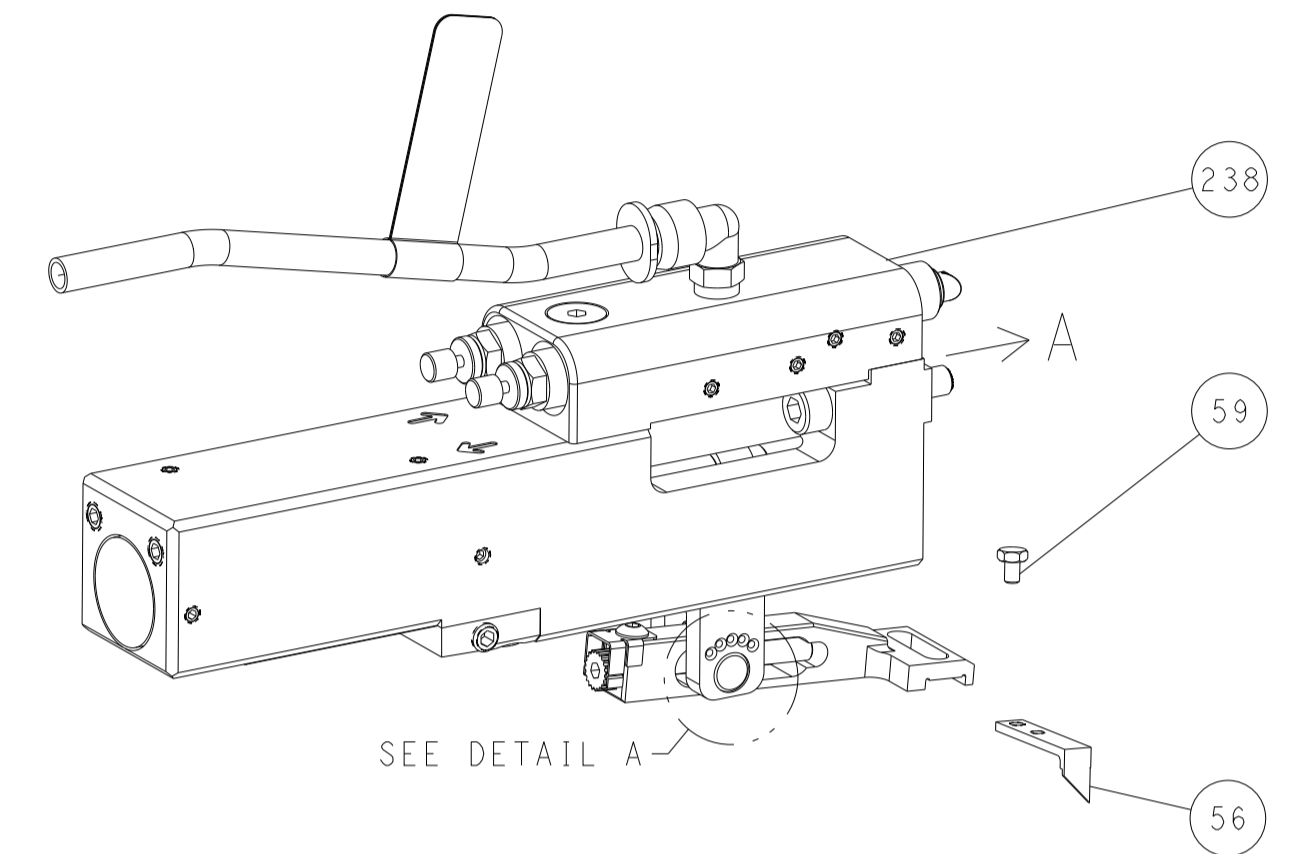
CUSTOMER ACCESSIBLE PRODUCTION DRAWING

REVISONS		DATE	OWN	APVD
LOC	DIST			
A	66			
P	LTM	DESCRIPTION		
		SEE SHEET 1		

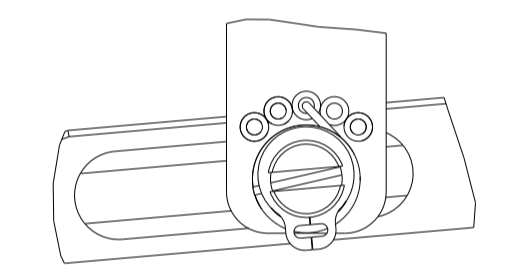
FEED TYPE MECHANICAL



PNEUMATIC

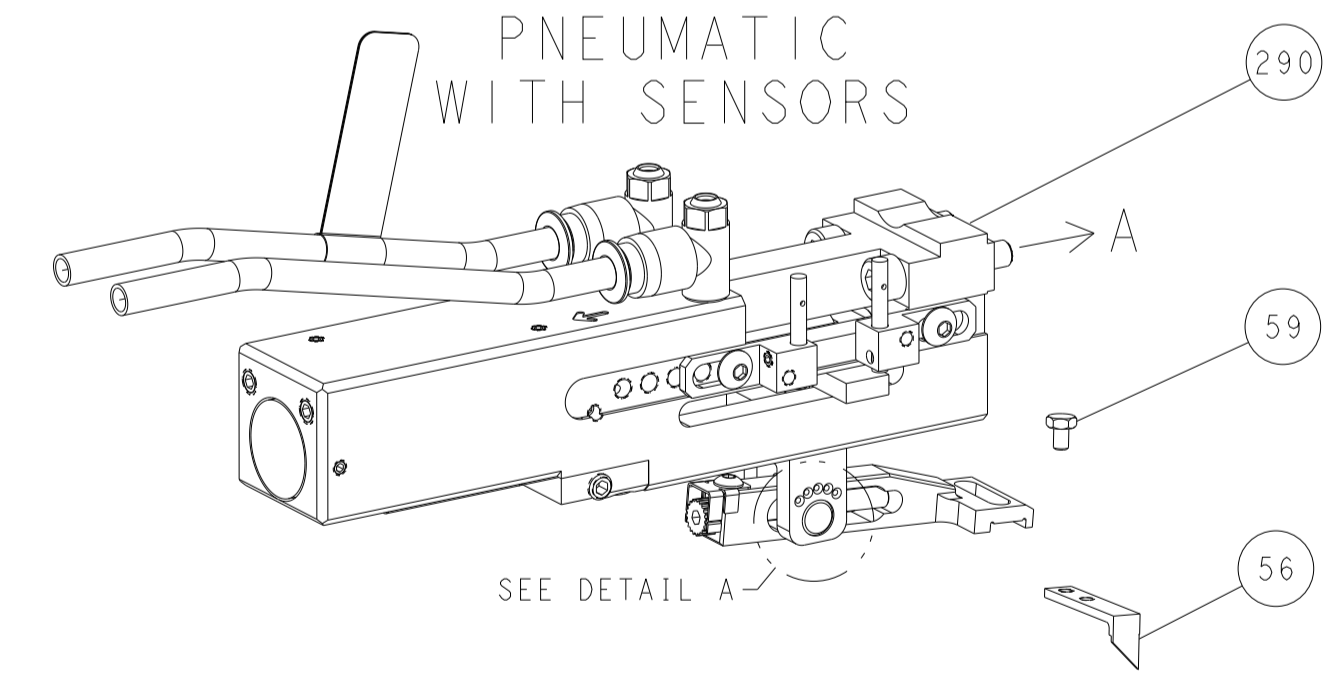


FEED SPRING SETTING POSITION (SHOWN FROM REAR SIDE)

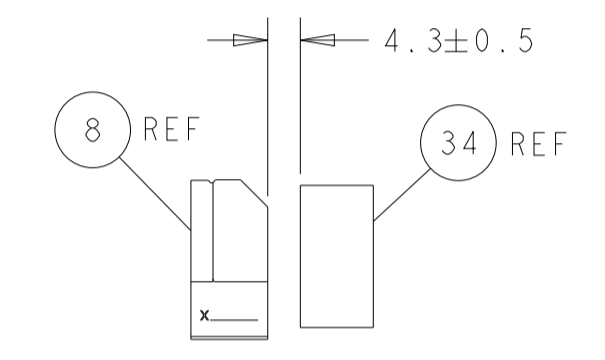
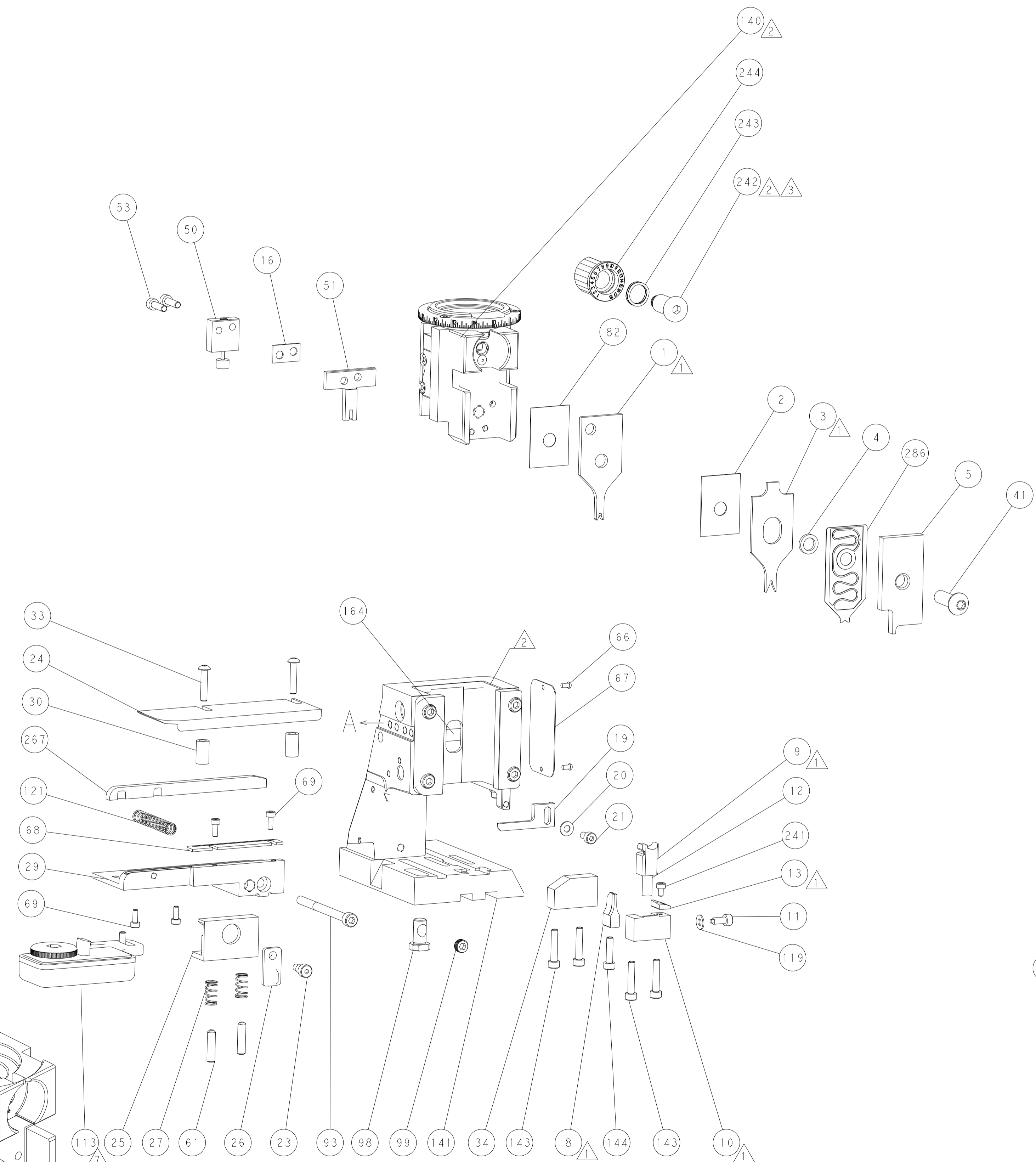
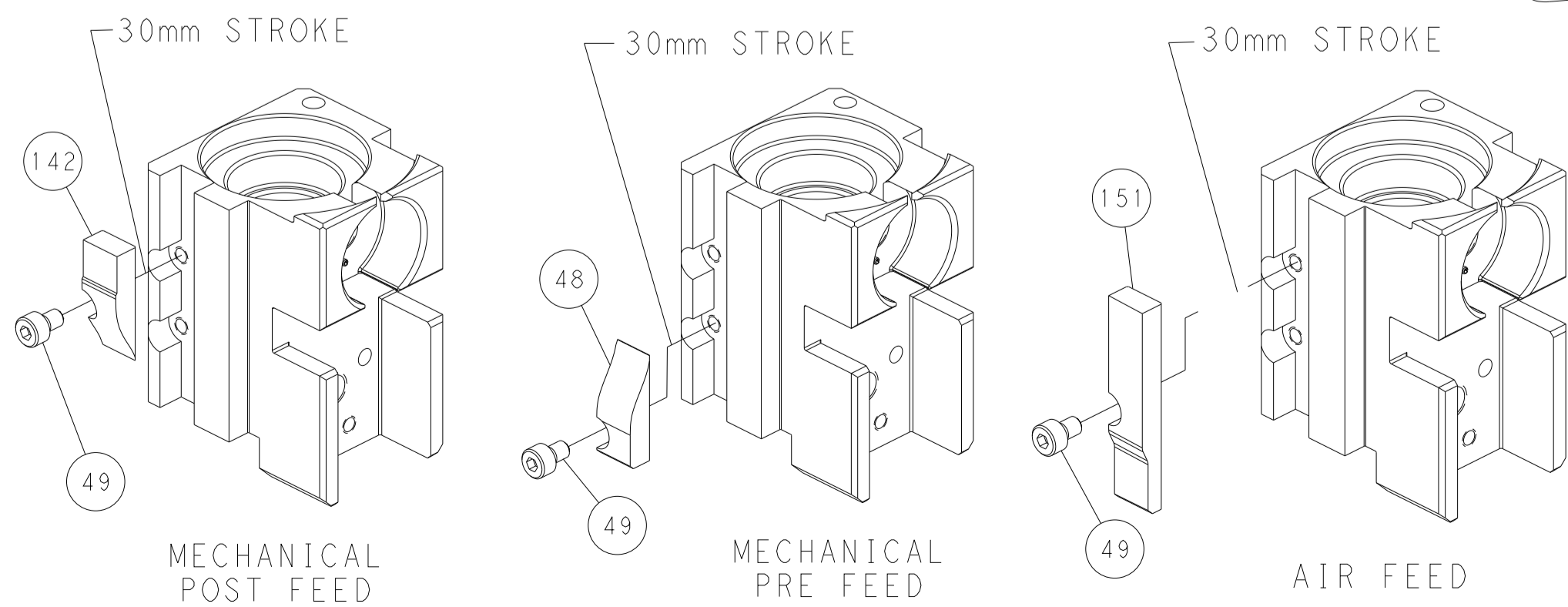


DETAIL A

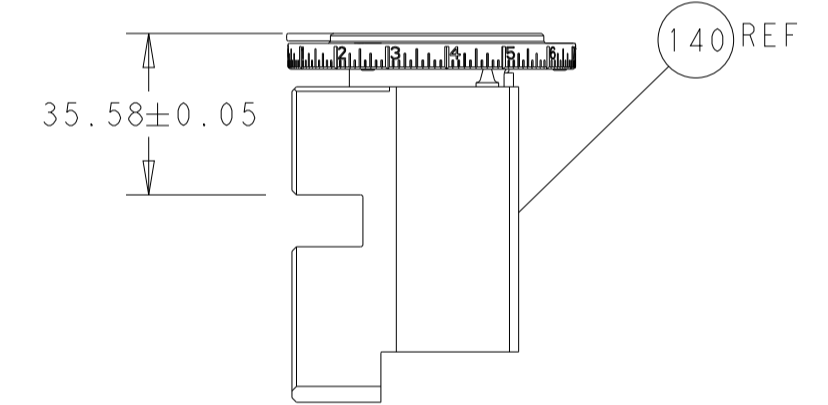
DOUBLE ACTING PNEUMATIC WITH SENSORS



CAM POSITIONS

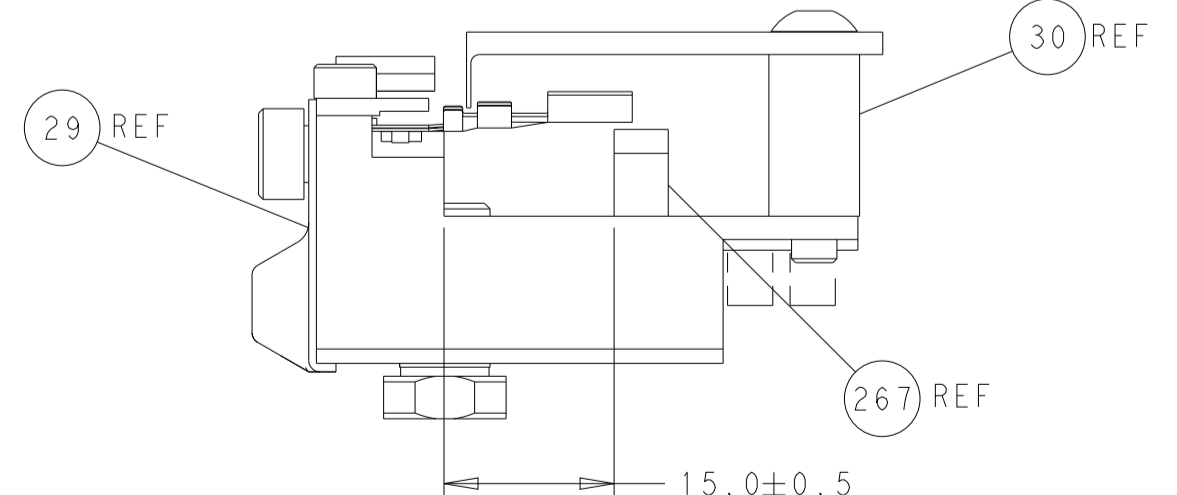


TERMINAL SUPPORT LOCATION



RAM SET-UP

ITEM 30 LOCATED AT REAR HOLES



FEED TRACK POSITION GUIDE BY INSULATION BARREL

PACIFIC VERSION
 Shown on sheets 3 of 4 & 4 of 4
 (Atlantic version shown on sheets 1 of 4 & 2 of 4)

<small>THIS DRAWING IS A CONTROLLED DOCUMENT FOR TYCO ELECTRONICS CORPORATION. IT IS THE PROPERTY OF TYCO ELECTRONICS CORPORATION AND IS NOT TO BE REPRODUCED OR TRANSMITTED IN ANY FORM OR BY ANY MEANS, ELECTRONIC OR MECHANICAL, INCLUDING PHOTOCOPYING, RECORDING, OR BY ANY INFORMATION STORAGE AND RETRIEVAL SYSTEM, WITHOUT THE WRITTEN PERMISSION OF TYCO ELECTRONICS CORPORATION.</small>		DWN: R. STAKEM CHK: G. BAILEY APVD: T. ELBIN	14NOV2011 14NOV2011 14NOV2011	NAME: TE Connectivity Harrisburg, PA 17105-3608
DIMENSIONS: mm TOLERANCES UNLESS OTHERWISE SPECIFIED: 0 PLC ± 1 PLC ± 2 PLC ± 3 PLC ± 4 PLC ± ANGLES FINISH ±		PRODUCT SPEC: APPLICATION SPEC:		SIZE: A1 CAGE CODE: 00779 DRAWING NO: C-2151540
MATERIAL:		WEIGHT:		RESTRICTED TO: CUSTOMER ACCESSIBLE PRODUCTION DRAWING SCALE: 1:2 SHEET: 4 OF 4 REV: P1