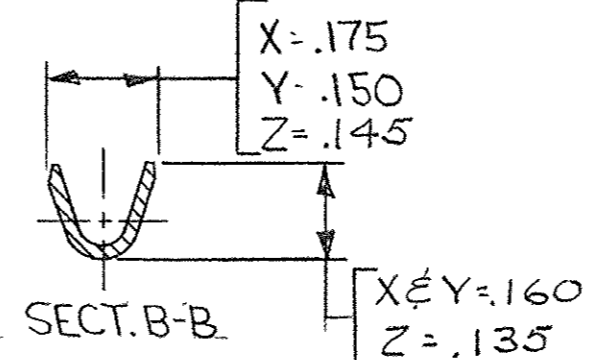
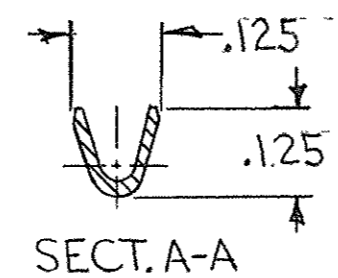
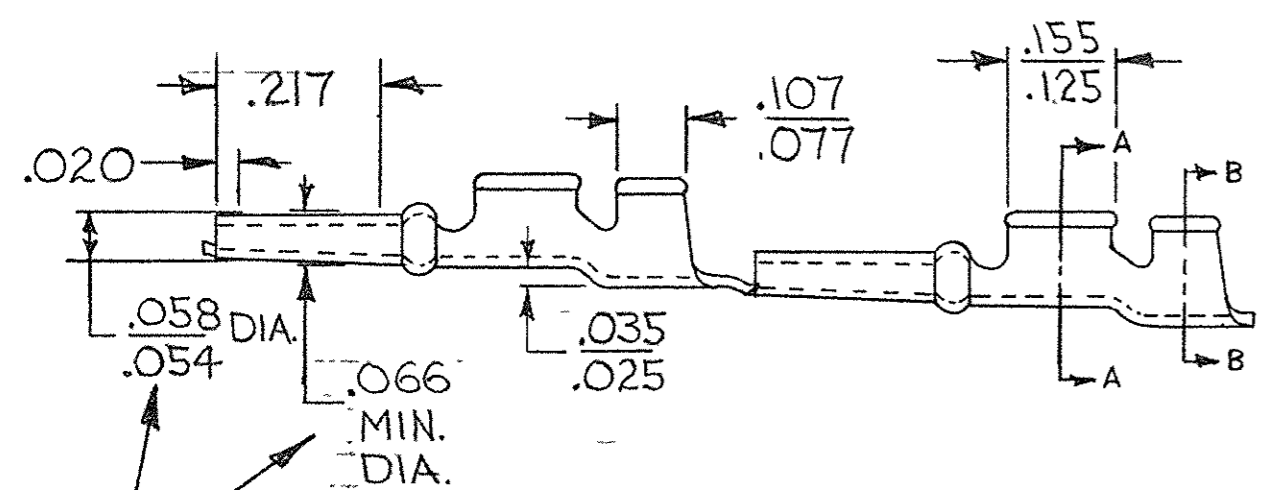
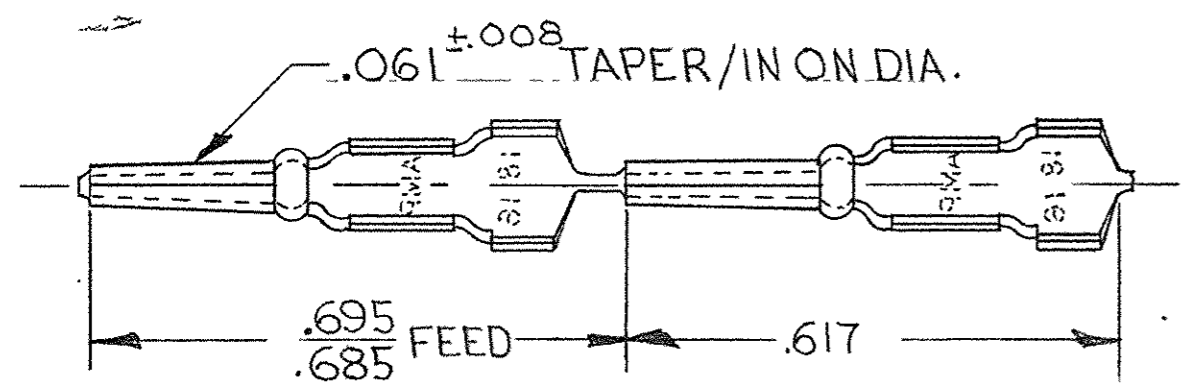


41656  
NUMBER

© 1962 BY AMP INCORPORATED. ALL RIGHTS RESERVED. AMP PRODUCTS COVERED BY PATENTS AND/OR PATENTS PENDING. APPROVED PER GOVT CONTRACT NO.

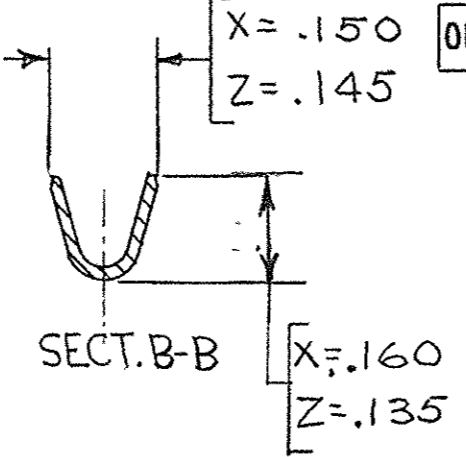
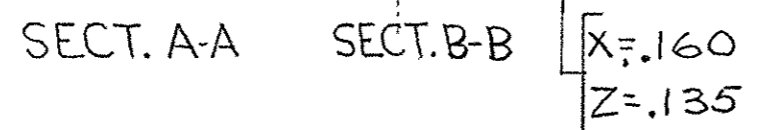
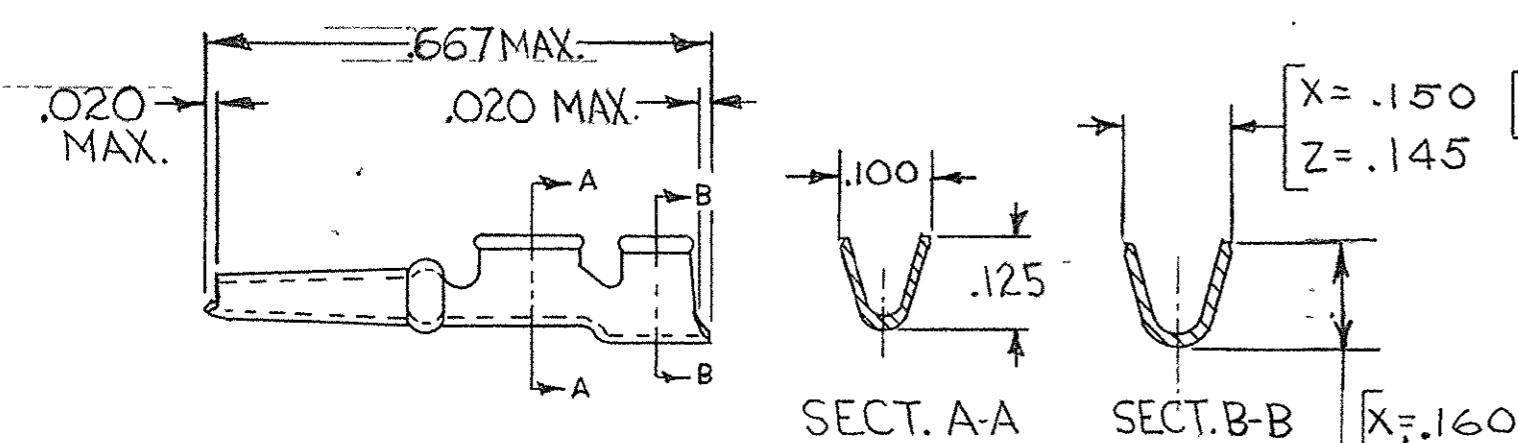
1. PART NO. 66202-1 HAS MILLED SERRATIONS.

REVISIONS				
SYM	ZONE	DESCRIPTION	DATE	APPROVAL
W		REVISED & REDRAWN T-781	8/9/63	MAM J.K.
Y		REVISED U-230	10-16-63	M.S. J.K.
Z		REVISED U-411	12-5-63	DR. J.K.
AA		REVISED W-62	3-29-65	M.S. D.S.H.
AB		REVISED 1182	1-25-67	D.R. D.H.
AC		REVISED 1179	2-10-67	M.S. D.H.
AD		OBSOLETE 41223 2102	5-12-69	DR. D.H.
AE		OBS. 60173-4, 42237-2, 60066-4(2102) 2459	4-2-70	M.S. D.H.
AF		OBSOLETE 41865 PER ECN 3343	2-4-72	J.W. D.H.
AG		PRINT DIST WAS "39" LOC WAS "AB" 9347	10-7-72	CO
AH		REVISED HAND TOOL NUMBERS	5-9-73	R.C.H.
AJ		OBS. 41675-1, 42237-3, 41658-1, 42774-1, 2, 3-4, 41223-1(60184-1) 1099	1-2-79	D.H.
AK		REVISED PLATING EA 1515	8-1-80	DS
AL		BRIGHT TIN-LEAD WAS BRIGHT TIN EA 1818	6-16-81	DS
AM		UPDATED NAME EA 2071	3-82	DS
AN		REVISED GOLD PLATING EA 2139	6-16-82	DS
AP		OBS 66202-1 & 66203-1 ECN 53379	11-19-86	R.B.
AR		REMOVED 41223 ECN 53859	2-26-87	R.B.
AS		REV PER DF-0357	4/18/88	MS
AT		OBS 41674 PER DF-3970	8-11	MS
AU		REV PER OH14-0139-05	1-25-06	PY RG

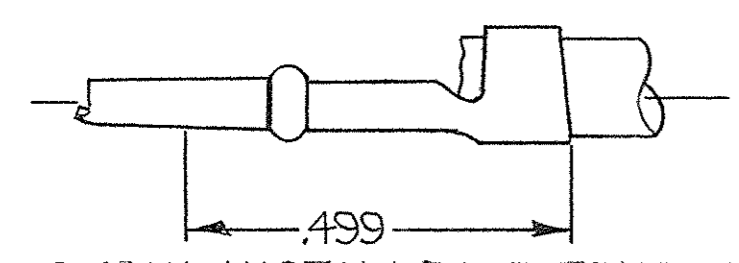
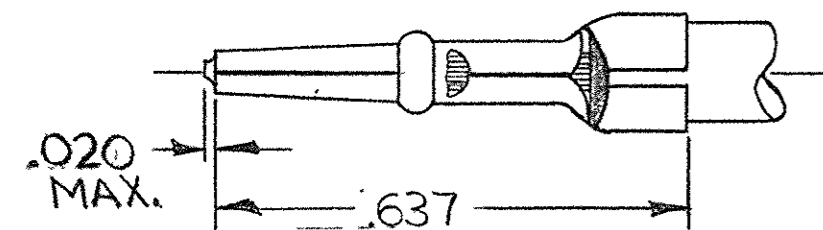


OUT OF ROUND NOT TO EXCEED TOLERANCE ON DIMENSIONS.

STRIP



LOOSE PIECE



MAX. INSTALLED EXTENSION

CRIMPED VERSION

60066-6	60173-6	18-16	.070-.100	Z	.00005 GOLD OVER .00005 NICKEL	380306-3	90198	.058
41658-1	41675-1	18-16	.100-.140	X	.00005 GOLD OVER .00005 NICKEL	380306-3	90007	.058
60066-5	60173-5		.070-.100	Z	PLAIN		90198	
60066-4	60173-4			Z	.0001 GOLD OVER .0001 SILVER			
60066-3	60173-3			Z	.00003 GOLD OVER .00005 NICKEL		90198	
60066-2	60173-2			Z	.0002 SILVER		90198	
60066-1	60173-1		.070-100	Z	.0001 BRIGHT TIN-LEAD		90198	
OBS 66202-1	66203-1		.100-.140	X	.0001 BRIGHT TIN-LEAD		90007	
42774-4	#			Y	PLAIN		47044	
	42237-2			X	PLAIN			
60184-1	42237-3			X	.0002 GOLD OVER .00005 NICKEL		90007	
42774-3	#			Y	.00003 GOLD OVER .00005 NICKEL		47044	
42774-2	#			Y	.0002 SILVER		47044	
42774-1	#			Y	.0001 BRIGHT TIN-LEAD		47044	
41865	42237-1			X	.0001 GOLD OVER .0001 SILVER			
41658	41675			X	.00003 GOLD OVER .00005 NICKEL		90007	
41657	41674			X	.0002 SILVER		90007	
5-41656-0		18-16	.100-.140	X	.0001 MATTE TIN	380306-3	90007	.058
41656	41673	18-16	.100-.140	X	.0001 BRIGHT TIN-LEAD	380306-3	90007	.058
STRIP NO	LOOSE PIECE No.	WIRE SIZE	INSUL SIZE	INSUL CODE	FINISH	INSERT TOOL	HAND TOOL	C.H.

AMP INFO	QTY REQD	NOMENCLATURE OR DESCRIPTION	PART OR IDENTIFYING NO
LOC PRINT			
DF			
LIST OF MATERIALS OR PARTS LIST			
UNLESS OTHERWISE SPECIFIED DIMENSIONS ARE IN INCHES TOLERANCES ON FRACTIONS DECIMALS ANGLES ± # ±.010 ± #		SIGNATURE	DATE
MATERIAL		DR. M.A. Mahly	8/9/63
.0160 COML. BRASS		CHK J. Kaufman	8/19/63
HEAT TREAT		DSGN ENGR K. Kallweit	8/14/63
FINISH		APPD J. Wenzel	8/14/63
SEE TABLE		DSGN APPD	OTHER APPD
		AMP INCORPORATED HARRISBURG, PENNSYLVANIA	
		NAME	
		PIN, TAPER, INSULATION SUPPORT, "53" SERIES	
		CODE IDENT NO	SIZE NUMBER
		00779	C 41656
		SCALE 4-1	WT CALC ACTUAL SHEET

CUSTOMER DRAWING 1