

**PRELIMINARY**

spec ref	dr	N.Zuo	2013.3.30	projection	MM	size	A3	scale	2:1
tolerance std	eng					ecn no		rel level	
TOLERANCES UNLESS OTHERWISE SPECIFIED	chr					product family	-	In Work	
	surface	linear	0.X ±0.30	0.XX ±0.20	0.XXX ±0.10	ISO 1302	angular	0° ±2°	
				<b>DDR4 288Pin DIMM CONNECTOR</b> PRESS FIT TERMINATION		cat. no. -	Product - Customer Drw	10124806	rev 6
				www.fci.com		sheet 1 of 4			

Copyright FCI.

DDR4 MODULE  
 MORE INFORMATION REFER TO JEDEX MO-309

A

B

C

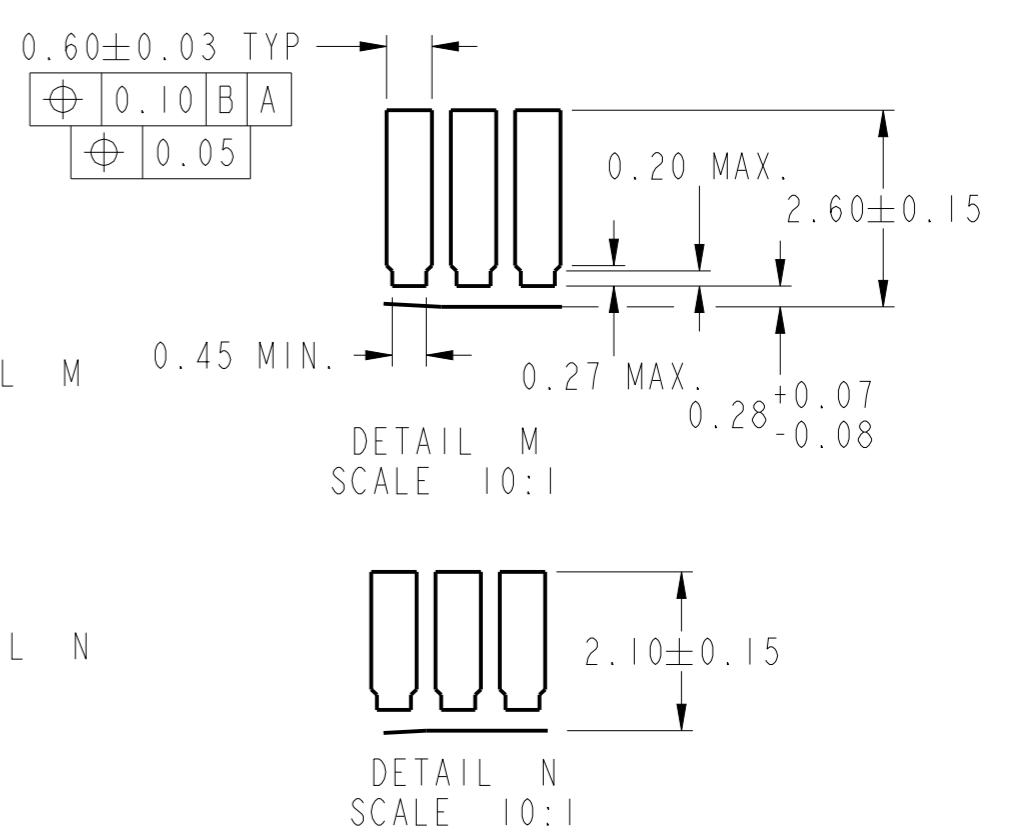
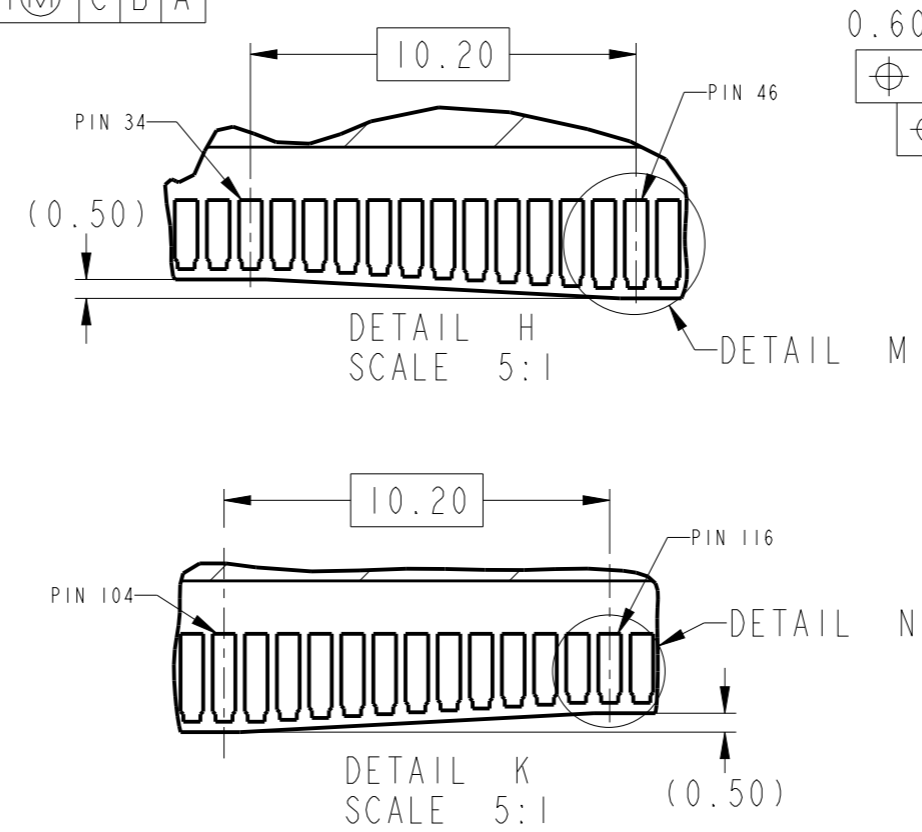
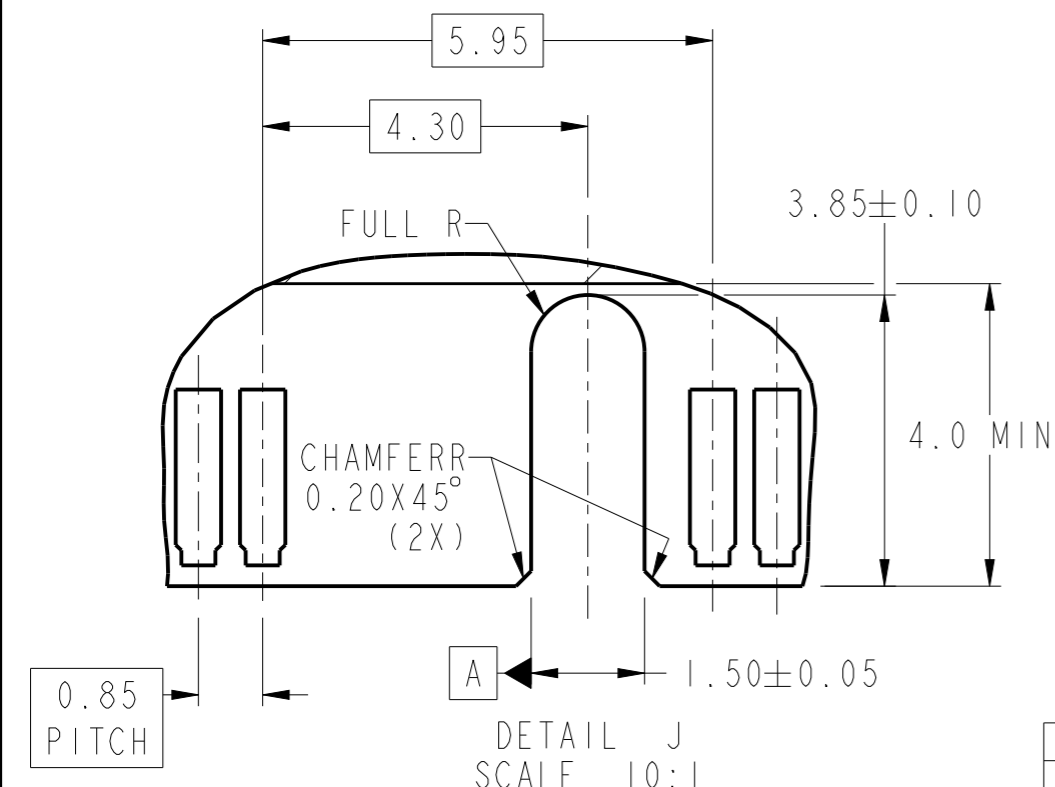
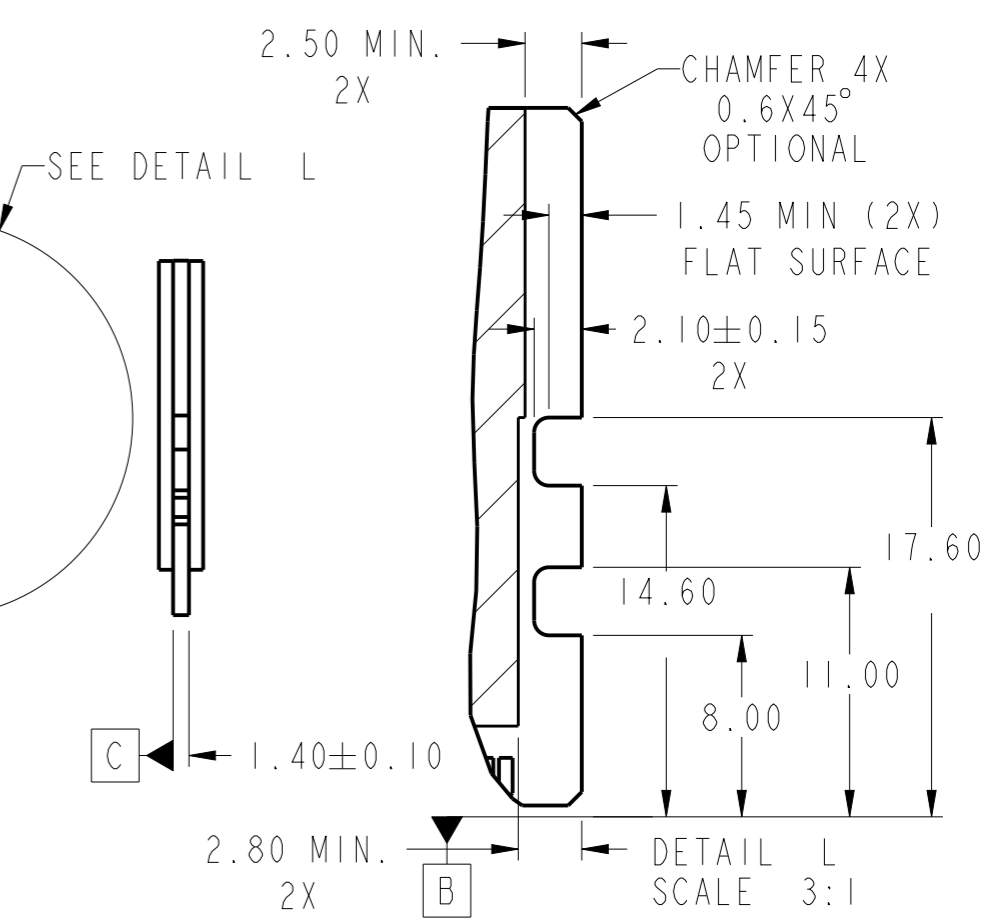
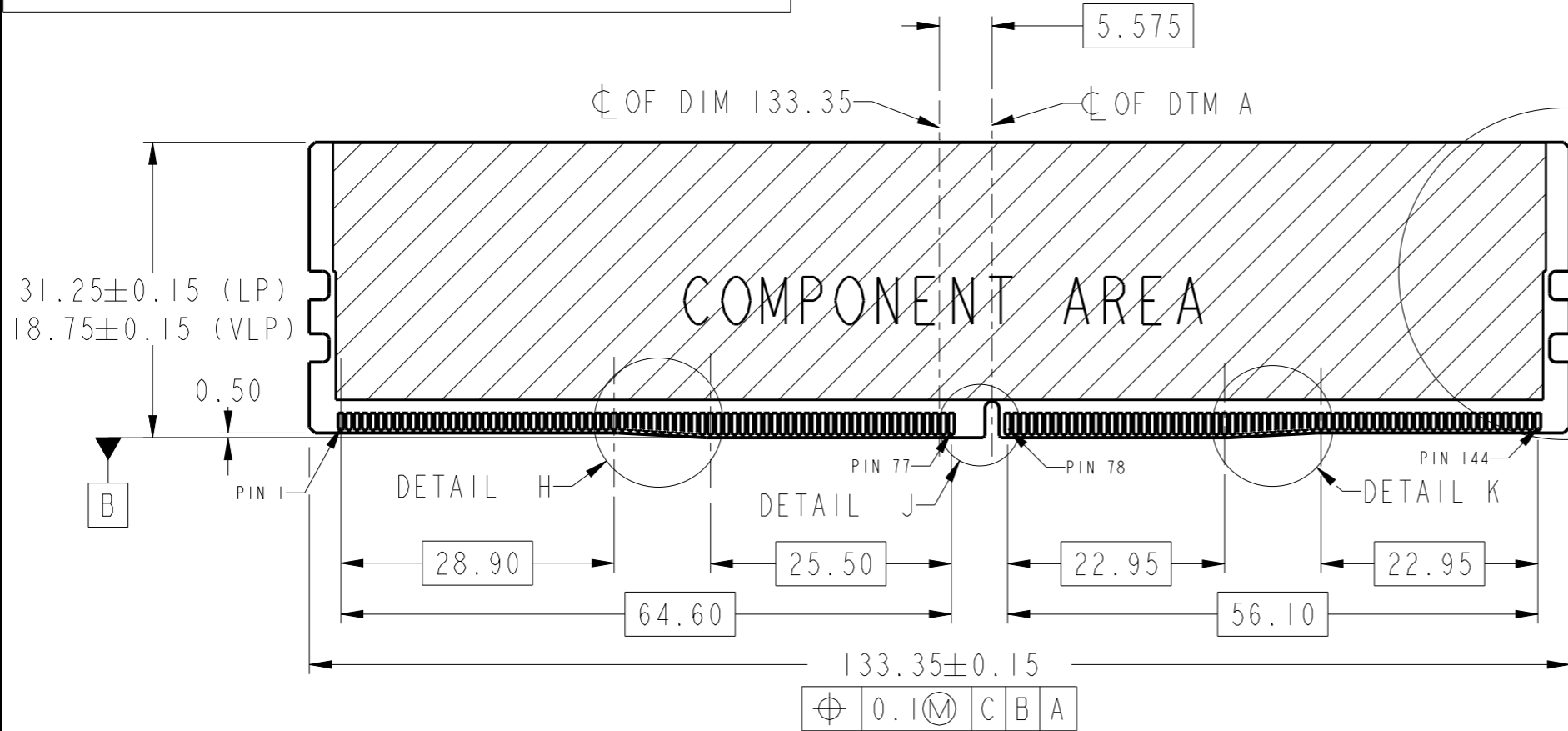
D

A

B

C

D

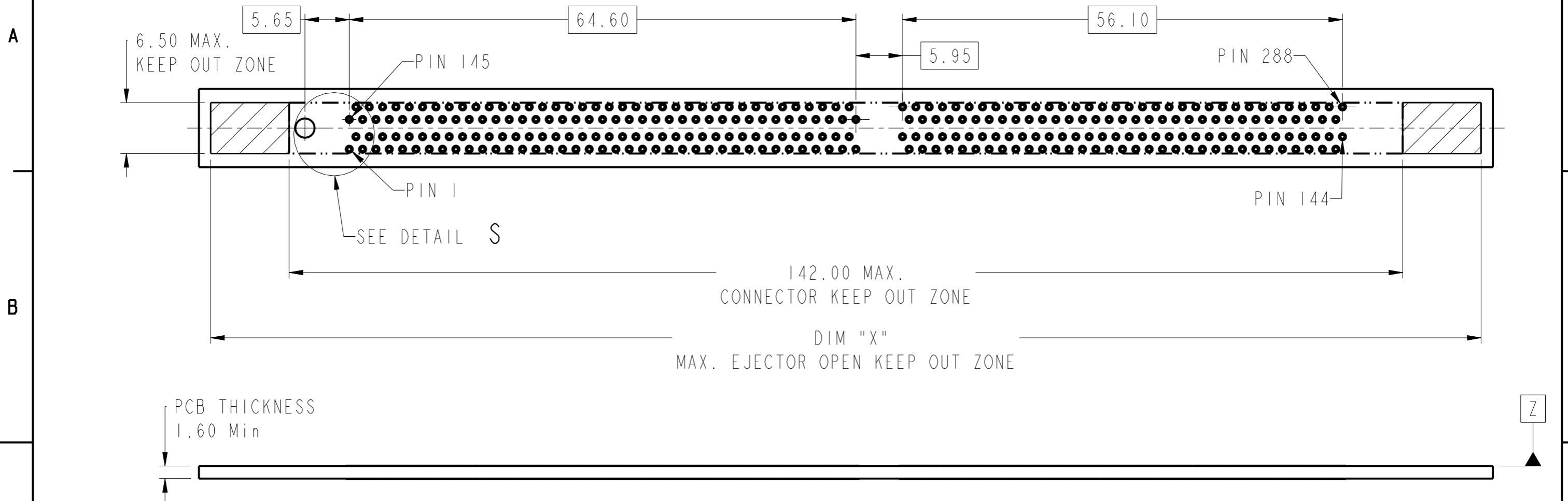


spec ref	dr N.Zuo		2013.3.30	projection	MM	size A3	scale 3:2
tolerance std	TOLERANCES UNLESS OTHERWISE SPECIFIED			⊕	↔	ecn no	
surface ✓	linear	0.X ±0.30		product family		rel level	In Work
		0.XX ±0.20					
		0.XXX ±0.10					
ISO 1302	angular	0° ±2°					
FCJ			DDR4 288Pin DIMM CONNECTOR		10124806		rev 6
www.fci.com			PRESS FIT TERMINATION		Product - Customer Drw		sheet 2 of 4

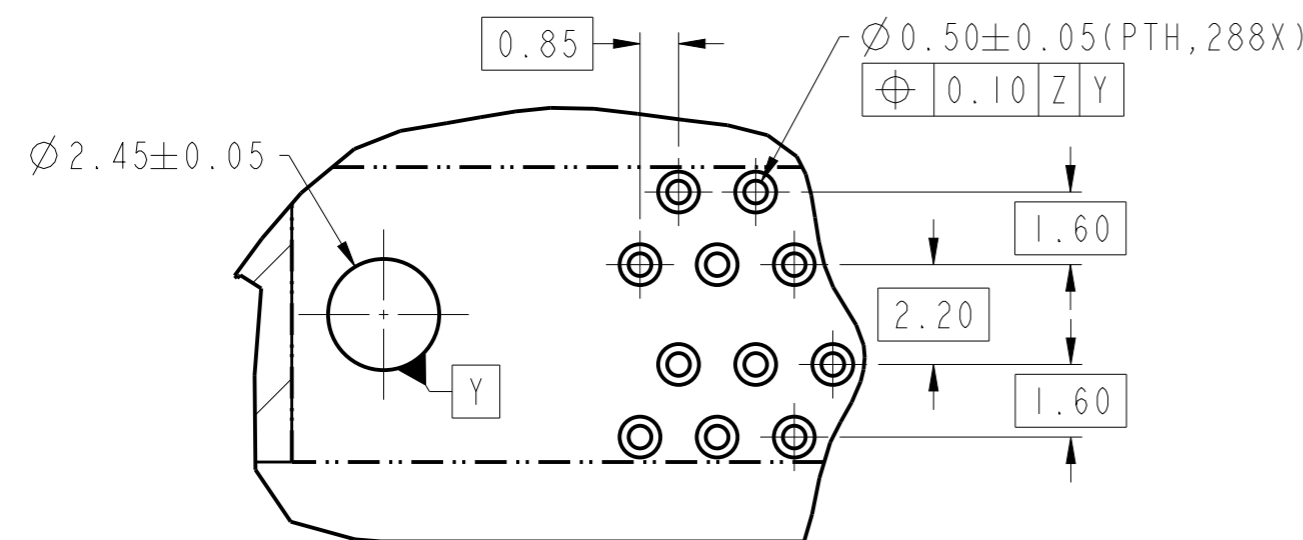


Copyright FCI.

# RECOMMENDED PCB LAYOUT



PCB THICKNESS  
1.60 Min



DETAIL S  
SCALE 6:1

spec ref	dr	N.Zuo	2013.3.30	projection	MM	size	A3	scale	2:1
tolerance std	eng					ecn no		rel level	
TOLERANCES UNLESS OTHERWISE SPECIFIED		chr				-		In Work	
surface	linear	0.X	±0.30	product family		-		In Work	
ISO 1302		0.XX	±0.20			cat. no. -		Product - Customer Drw	
		0.XXX	±0.10	www.fci.com		title DDR4 288Pin DIMM CONNECTOR PRESS FIT TERMINATION		sheet 3 of 4	
	angular	0°	±2°	dwg no 10124806		rev 6			

Copyright FCI.

PRODUCT PART NUMBER

10124806 -

ADDITIONAL REQUIREMENTS

0: DEFAULT

HOUSING COLOR

0: NATURAL  
1: BLACK  
2: BLUE

EJECTOR TYPE

CODE	COLOR	DIM"X1" MAX. EJECTORS OPEN DISTANCE	DIM"X2" MAX. EJECTORS CLOSE DISTANCE	DIM"W" EJECTOR WIDTH	EJECTOR FIGURE
0	NATURAL	162.00	149.00	(6.42)	
1	BLACK				
2	BLUE				
3	NATURAL	152.00	142.00	(6.42)	
4	BLACK				
5	BLUE				
6	NATURAL	157.00	145.00	(4.00)	
7	BLACK				
8	BLUE				

TAIL PLATING

LF: 100u" MIN. MATE TIN  
TL: 100u" MIN. TIN LEAD

CONTACT AREA PLATING

CODE	CONTACT AREA	UNDERPLATING
1	15u" MIN. GOLD	50u" MIN. NICKEL
3	30u" MIN. GOLD	
4	30u" MIN. GXT	
5	15u" MIN. GXT	90u" MIN. NICKEL
6	30u" MIN. GOLD	
7	15u" MIN. GOLD	

CONTACTS LUBRICATION

0: WITHOUT  
1: WITH

NOTES:

- MATERIALS:  
HOUSING: HIGH PERFORMANCE RESINS, GLASS FIBER FILLED, UL94 V-0 RATED.  
EJECTOR: HIGH PERFORMANCE RESINS, GLASS FIBER FILLED, UL94 V-0 RATED.  
TERMINAL: COPPER ALLOY
- DATE CODE "MMDDYYL", MMDDYY IS ASSEMBLY DATE, L IS FCI PRODUCTION LINE.
- SPECIFICATION:  
PRODUCTION SPECIFICATION: FCI GS-12-1092.  
PACKAGE SPECIFICATION: FCI GS-14-2267.  
APPLICATION SPECIFICATION: FCI GS-20-0353.
- LEAD FREE PRODUCT MEETS EUROPEAN UNION DIRECTIVES AND OTHER COUNTRY REGULATIONS AS DESCRIBED IN FCI GS-22-008.



Copyright FCI.

spec ref		dr	N. Zuo	2013.3.30	projection	MM	size	A3	scale	1:1
tolerance std		eng				← →	ecn no		rel level	
TOLERANCES UNLESS OTHERWISE SPECIFIED		chr					product family	-	In Work	
surface	✓	linear	0.X	±0.30		DDR4 288Pin DIMM CONNECTOR	dwg no	10124806	rev	6
			0.XX	±0.20						
			0.XXX	±0.10						
ISO 1302		angular	0°	±2°	www.fci.com	cat. no.	-	Product - Customer Drw	sheet 4 of 4	