

Development Board EPC9039 Quick Start Guide

EPC2103

Monolithic Half-Bridge with Gate Drive

Revision 1.0



DESCRIPTION

These development boards are in a monolithic half bridge topology with onboard gate drives, featuring the EPC2103 eGaNiC (Enhancement-mode Gallium Nitride Integrated Circuits). The purpose of these development boards is to simplify the evaluation process of these monolithically integrated eGaN FETs by including all the critical components on a single board that can be easily connected into any existing converter.

The development board is 2" x 2" and contains one eGaNiC in half bridge configuration using the Texas Instruments LM5113 gate driver, supply and bypass capacitors. The board contains all critical components and layout for optimal switching performance and has additional area to add buck output filter components on board. There are also various probe points to facilitate simple waveform measurement and efficiency calculation. A complete block diagram of the circuit is given in Figure 1.

For more information on the EPC2103 eGaNiC, please refer to the datasheets available from EPC at www.epc-co.com. The datasheet should be read in conjunction with this quick start guide.

SETUP AND OPERATION

The development boards are easy to set up to evaluate the performance of the eGaNiC. The board allows the on-board placement of buck output filter components. Refer to Figure 2 for proper connect and measurement setup and follow the procedure below:

1. With power off, connect the input power supply bus to +V_{IN} (J5, J6) and ground / return to -V_{IN} (J7, J8).
2. With power off, connect the switch node of the half bridge OUT (J3, J4) to your circuit as required.
3. With power off, connect the gate drive input to +V_{DD} (J1, Pin-1) and ground return to -V_{DD} (J1, Pin-2).
4. With power off, connect the input PWM control signal to PWM (J2, Pin-1) and ground return to any of the remaining J2 pins.
5. Turn on the gate drive supply – make sure the supply is between 7 V and 12 V range.
6. Turn on the bus voltage to the required value (do not exceed the absolute maximum voltages).
7. Turn on the controller / PWM input source and probe switching operation.
8. Once operational, adjust the bus voltage and load PWM control within the operating range and observe the output switching behavior, efficiency and other parameters.
9. For shutdown, please follow steps in reverse.

NOTE. When measuring the high frequency content switch node (OUT), care must be taken to avoid long ground leads. Measure the switch node (OUT) by placing the oscilloscope probe tip through the large via on the switch node (designed for this purpose) and grounding the probe directly across the GND terminals provided.

Table 1: Performance Summary (T_A = 25°C) EPC9039

| Symbol | Parameter | Conditions | Min | Max | Units |
|------------------|--|--|------|------|-------|
| V _{DD} | Gate Drive Input Supply Range | | 7 | 12 | V |
| V _{IN} | Bus Input Voltage Range | | | 50* | V |
| V _{OUT} | Switch Node Output Voltage | | | 50* | V |
| I _{OUT} | Switch Node Output Current | | | 20** | A |
| V _{PWM} | PWM Logic Input Voltage Threshold | Input 'High' | 3.5 | 6 | V |
| | | Input 'Low' | 0 | 1.5 | V |
| | Minimum 'High' State Input Pulse Width | V _{PWM} rise and fall time < 10ns | 50 | | ns |
| | Minimum 'Low' State Input Pulse Width | V _{PWM} rise and fall time < 10ns | 100# | | ns |

*Maximum input voltage depends on inductive loading.
 ** Maximum current depends on die temperature – actual maximum current will be subject to switching frequency, bus voltage and thermal cooling. Symmetrical eGaN intended for 50% duty cycle or low step-down ratio applications.
 # Limited by time needed to 'refresh' high side bootstrap supply voltage.

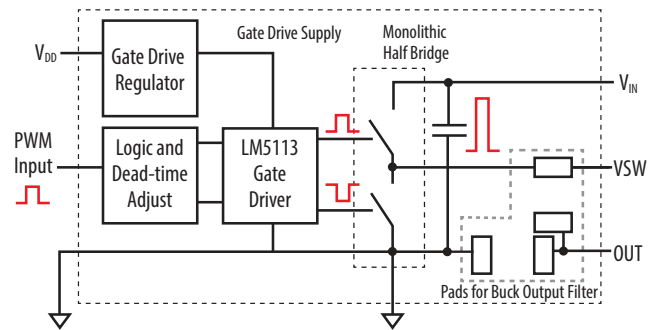


Figure 1: Block Diagram of Development Board

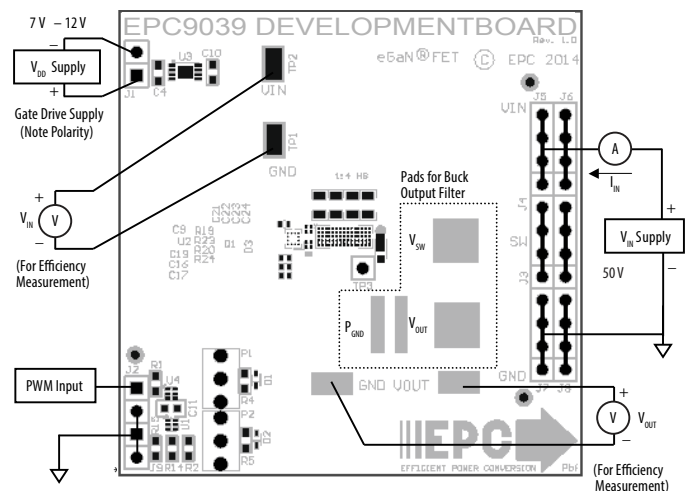


Figure 2: Proper Connection and Measurement Setup

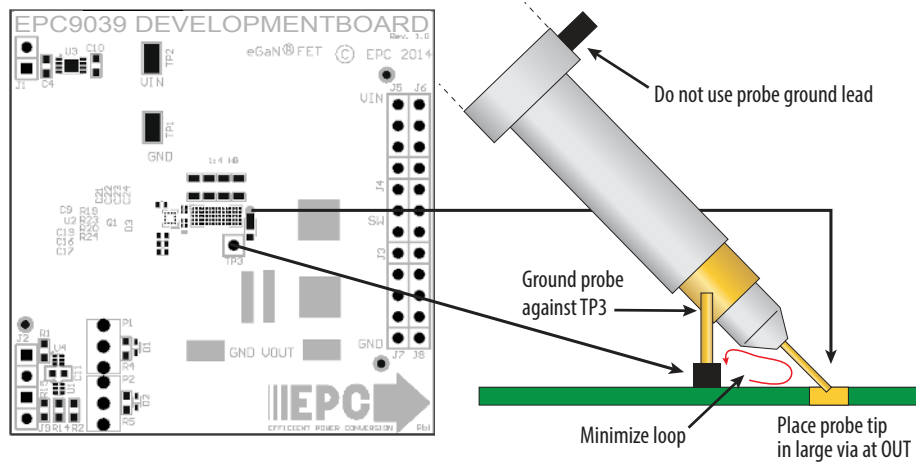


Figure 3: Proper Measurement of Switch Node – OUT

THERMAL CONSIDERATIONS

The EPC9039 development boards showcase the EPC2103 eGaNiC. These development boards are intended for bench evaluation with low ambient temperature and convection cooling. The addition

of heat-sinking and forced air cooling can significantly increase the current rating of these devices, but care must be taken to not exceed the absolute maximum die temperature of 150°C.

NOTE: These development boards do not have any current or thermal protection on board.

Table 2: Bill of Material

| Item | Qty | Reference | Part Description | Manufacturer / Part# |
|------|-----|------------------------|--|------------------------------|
| 1 | 3 | C4, C10, C11, | Capacitor, 1 μ F, 10%, 25 V, X5R | Murata, GRM188R61E105KA12D |
| 2 | 2 | C16, C17 | Capacitor, 100 pF, 5%, 50 V, NP0 | Kemet, C0402C101K5GACTU |
| 3 | 2 | C9, C19 | Capacitor, 0.1 μ F, 10%, 25 V, X5R | TDK, C1005X5R1E104K |
| 4 | 4 | C21, C22, C23, C24 | Capacitor - 1 μ F, 10%, 100 V, X7S | TDK, CGA4J3X7S2A105K125AE |
| 5 | 2 | D1, D2 | Schottky Diode, 30 V | Diodes Inc., SDM03U40-7 |
| 6 | 3 | J1, J2, J9 | Connector | 2 pins of Tyco, 4-103185-0 |
| 7 | 6 | J3, J4, J5, J6, J7, J8 | Connector | FCI, 68602-224HLF |
| 8 | 1 | Q1 | eGaNiC | EPC2103 |
| 9 | 1 | R1 | Resistor, 10.0 k, 5%, 1/8 W | Stackpole, RMCF0603FT10K0 |
| 10 | 2 | R2, R15 | Resistor, 0 Ω , 1/8 W | Stackpole, RMCF0603ZTOR00 |
| 11 | 1 | R4 | Resistor, 47 Ω , 1%, 1/8W | Stackpole, RMCF0603FT47R0 |
| 12 | 1 | R5 | Resistor, 75 Ω , 1%, 1/8W | Stackpole, RMCF0603FT75R0 |
| 13 | 4 | R19, R20, R23, R24 | Resistor, 0 Ω , 1/20 W | Panasonic, ERJ-1GE0R00C |
| 14 | 2 | TP1, TP2 | Test Point | Keystone Elect, 5015 |
| 15 | 1 | TP3 | Connector | 1/40th of Tyco, 4-103185-0 |
| 16 | 1 | U1 | I.C., Logic | Fairchild, NC7SZ00L6X |
| 17 | 1 | U2 | I.C., Gate driver | Texas Instruments, LM5113 |
| 18 | 1 | U3 | I.C., Regulator | Microchip, MCP1703T-5002E/MC |
| 19 | 1 | U4 | I.C., Logic | Fairchild, NC7SZ08L6X |
| 20 | 0 | R14 | Optional Resistor | |
| 21 | 0 | D3 | Optional Diode | |
| 22 | 0 | P1, P2 | Optional Potentiometer | |

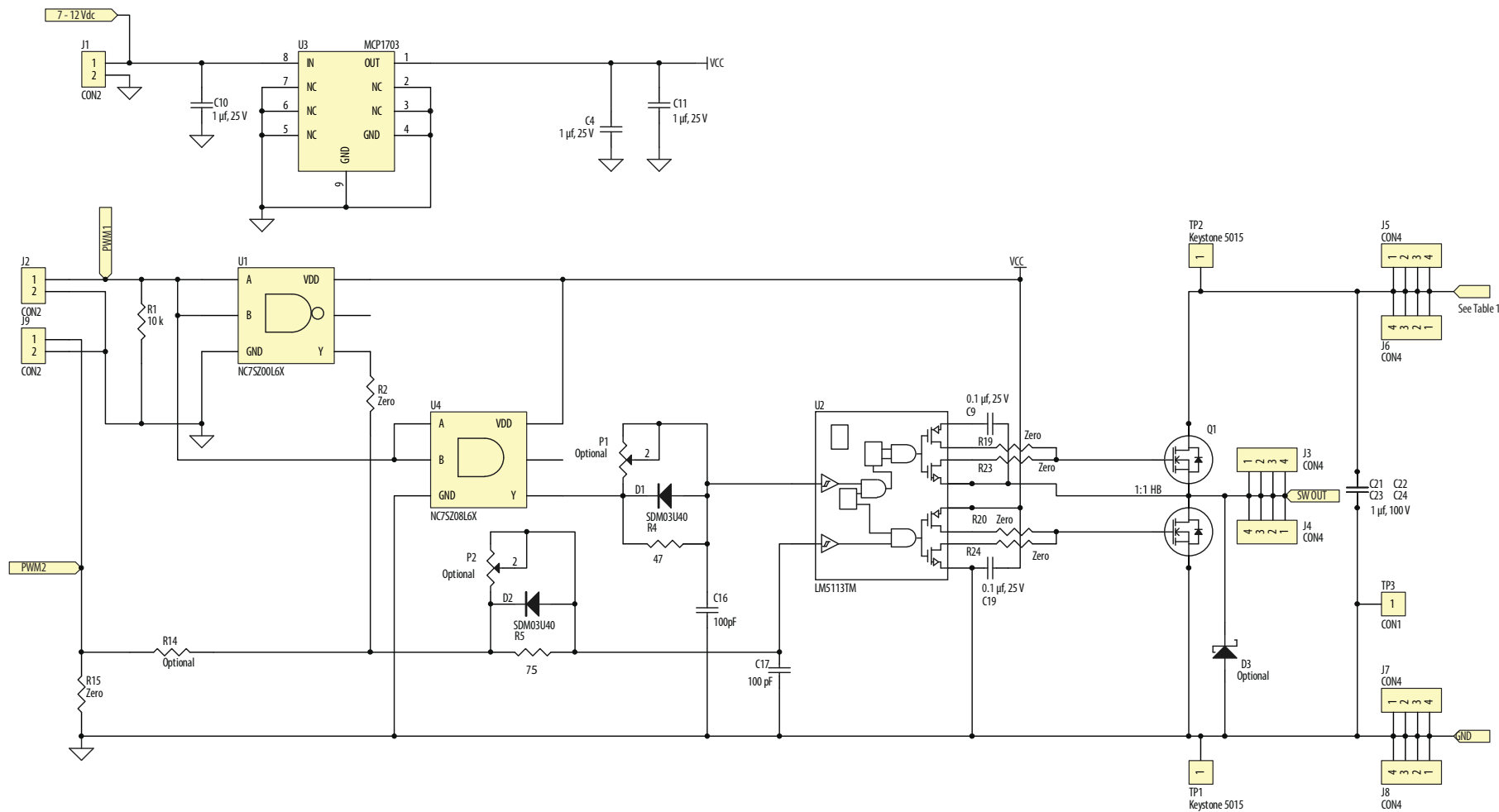


Figure 4: EPC9039 Development Board Schematic

For More Information:

Please contact info@epc-co.com
or your local sales representative

Visit our website:

www.epc-co.com

Sign-up to receive
EPC updates at
bit.ly/EPCupdates
or text "EPC" to 22828



EPC Products are distributed through Digi-Key.

www.digikey.com

Demonstration Board Notification

The EPC9039 board is intended for product evaluation purposes only and is not intended for commercial use. Replace components on the Evaluation Board only with those parts shown on the parts list (or Bill of Materials) in the Quick Start Guide. Contact an authorized EPC representative with any questions.

This board is intended to be used by certified professionals, in a lab environment, following proper safety procedures. Use at your own risk.

As an evaluation tool, this board is not designed for compliance with the European Union directive on electromagnetic compatibility or any other such directives or regulations. As board builds are at times subject to product availability, it is possible that boards may contain components or assembly materials that are not RoHS compliant. Efficient Power Conversion Corporation (EPC) makes no guarantee that the purchased board is 100% RoHS compliant.

The Evaluation board (or kit) is for demonstration purposes only and neither the Board nor this Quick Start Guide constitute a sales contract or create any kind of warranty, whether express or implied, as to the applications or products involved.

Disclaimer: EPC reserves the right at any time, without notice, to make changes to any products described herein to improve reliability, function, or design. EPC does not assume any liability arising out of the application or use of any product or circuit described herein; neither does it convey any license under its patent rights, or other intellectual property whatsoever, nor the rights of others.