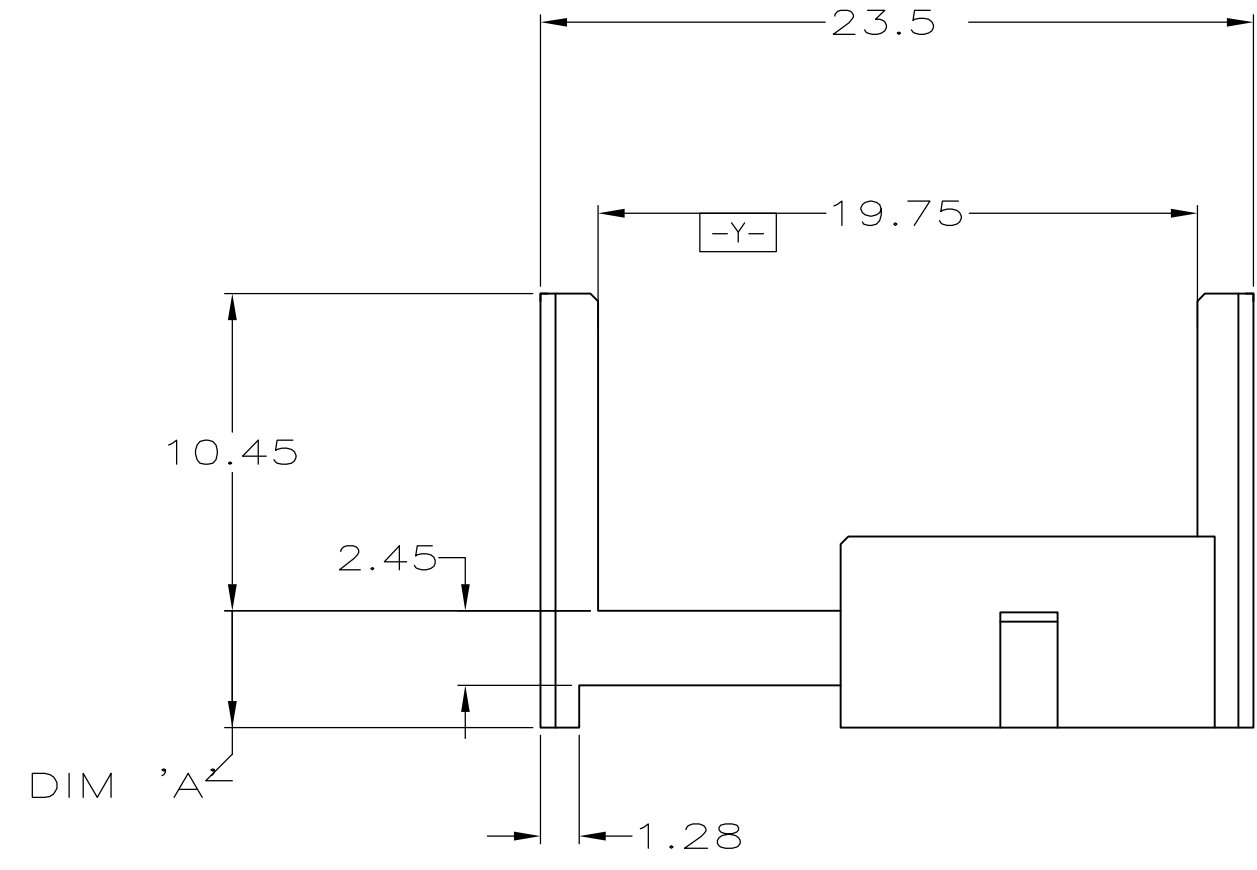
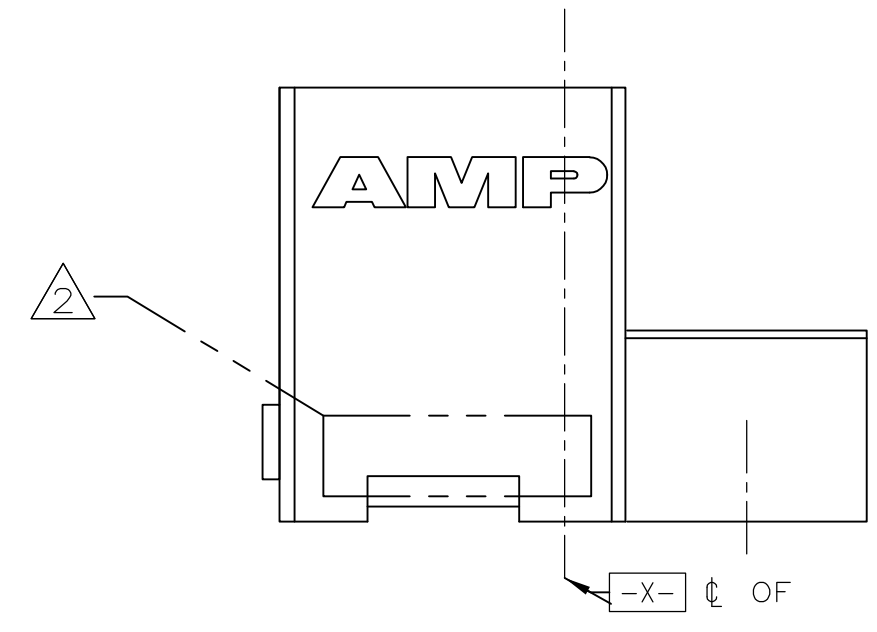
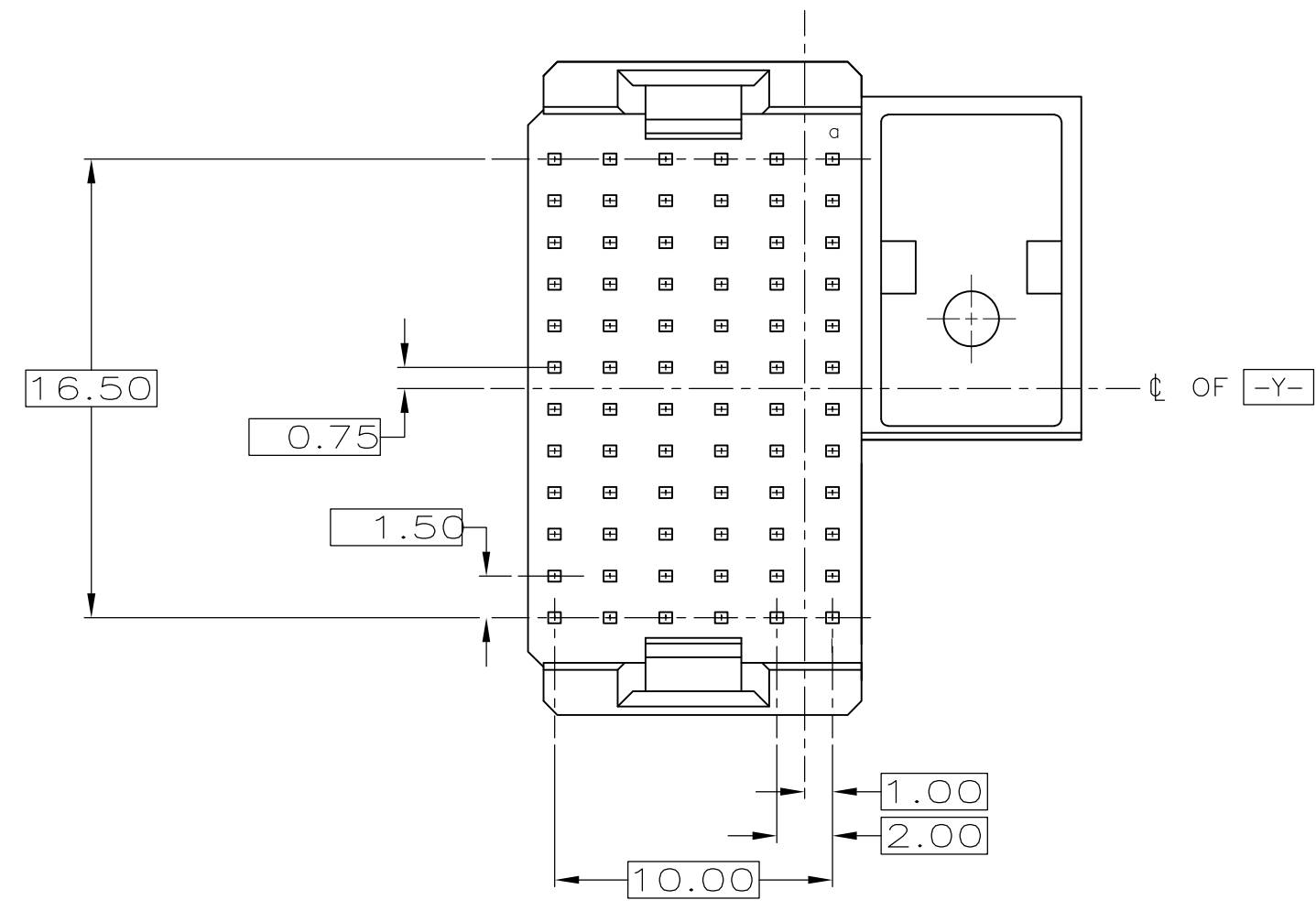


THIS DRAWING IS UNPUBLISHED. RELEASED FOR PUBLICATION .19
 (C) COPYRIGHT 19 BY AMP INCORPORATED. ALL RIGHTS RESERVED.

LOC	DIST	REVISIONS			
P	LTR	DESCRIPTION	DATE	DWN	APVD
AD	47	B	REVISED PER 0U1B-0050-00	02MAR00	DKS HWA
		B1	REVISED PER ECO-09-020689	02SEP09	KK AEG
		C	ECR-10-019054	15SEP10	DP MQW



- ① MATERIAL: 30% GLASS-FILLED POLYESTER.
- ② CONNECTOR MARKED WITH PART NUMBER AND DATE CODE.
- ③ RECOMMENDED MIDPLANE THICKNESS TO MAINTAIN STANDARD THREE-LEVEL SEQUENCING.
- ④ OBSOLETE PARTS: OBSOLETE CIS STREAMLINING PER D.RENAUD/D.SINISI

④ OBSOLETE	3.75	4.00	120647-7
	4.0	3.75	120647-6
④ OBSOLETE	4.25	3.5	120647-5
	4.5	3.25	120647-4
④ OBSOLETE	4.75	3.0	120647-3
	5.0	2.75	120647-2
	5.25	2.50	120647-1
	③	DIM "A"	PART NO

THIS DRAWING IS A CONTROLLED DOCUMENT.

DWN SK MICKIEVICZ 22APR97	AMP AMP Incorporated Harrisburg, PA 17105-3608
CHK SK MICKIEVICZ 02NOV99	
APVD HW ANDREWS 02NOV99	NAME
PRODUCT SPEC	MALE SHROUD HOUSING, RIGHT-HAND FEED-THROUGH MIDPLANE, UNLOADED 12-ROW, 72 POSN, GUIDE/KEY MODULE
APPLICATION SPEC	SIZE CAGE CODE DRAWING NO RESTRICTED TO
WEIGHT	A2 00779 C-120647
CUSTOMER DRAWING	SCALE 4:1 SHEET 1 OF 1 REV C

120647

A