

MATERIALS AND FINISHES:

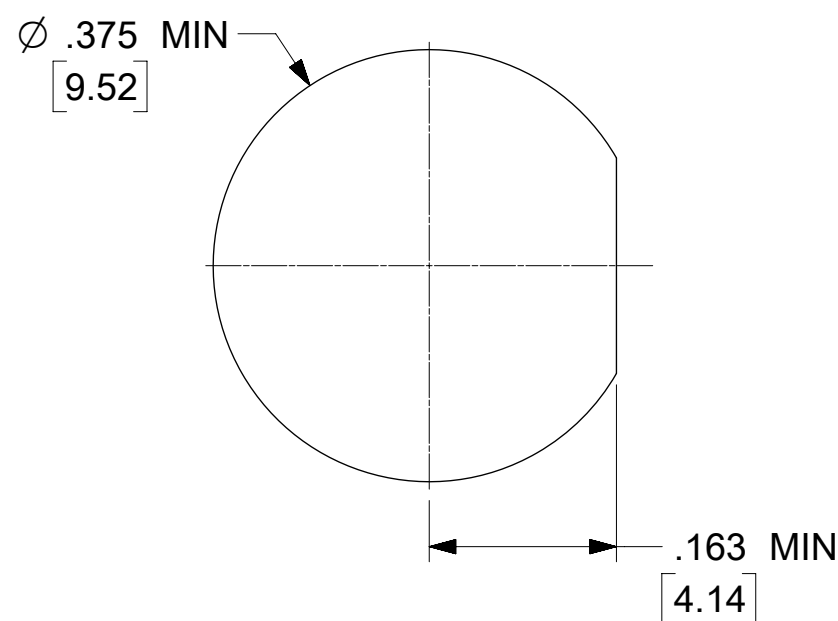
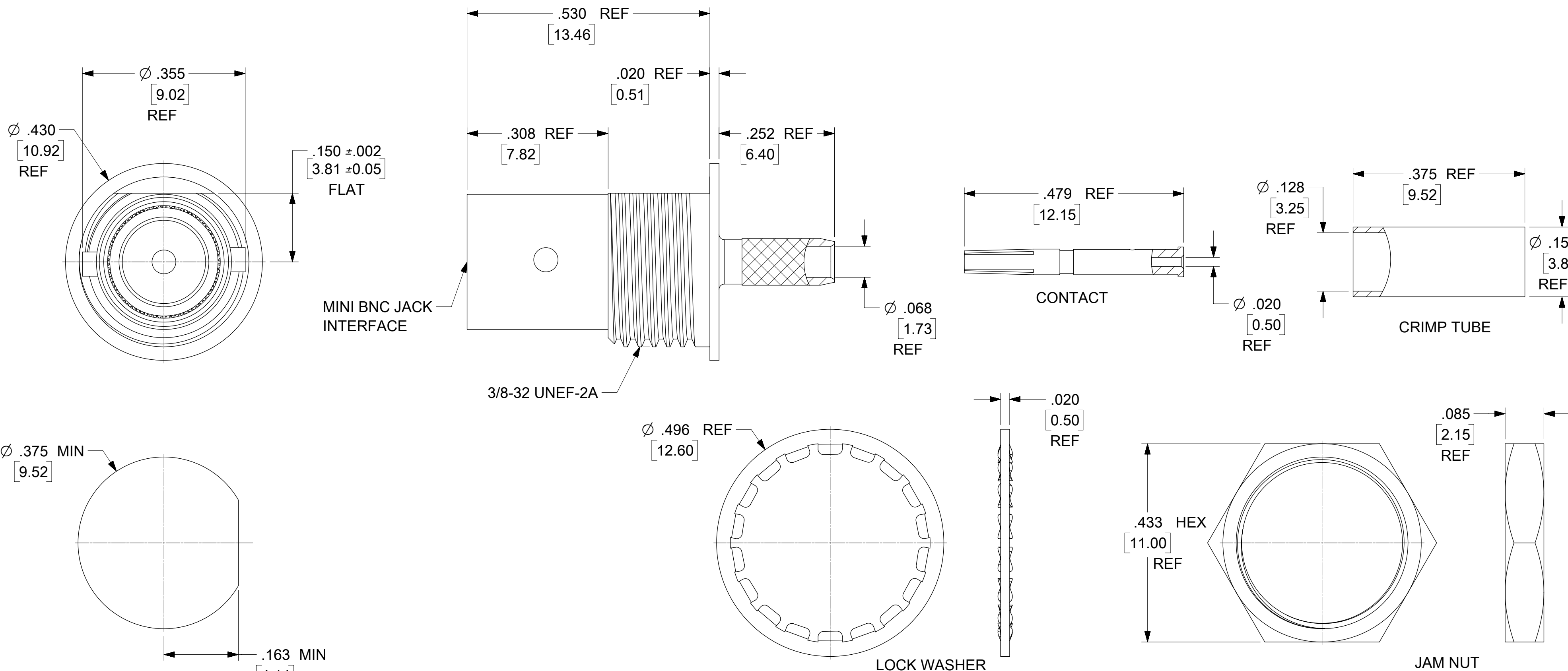
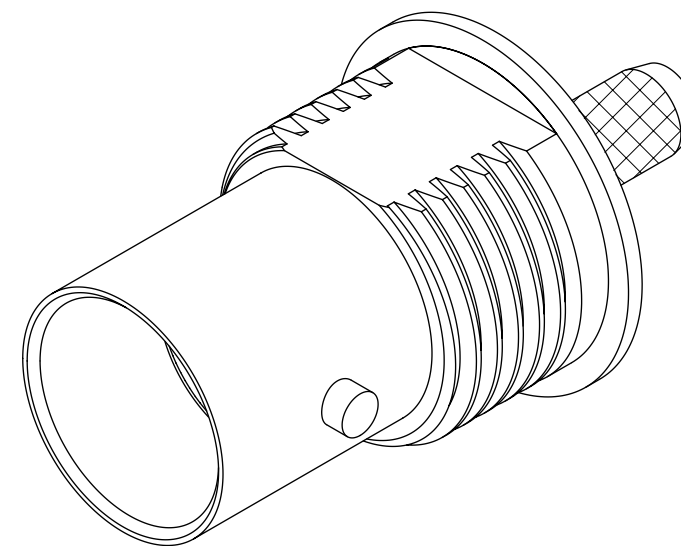
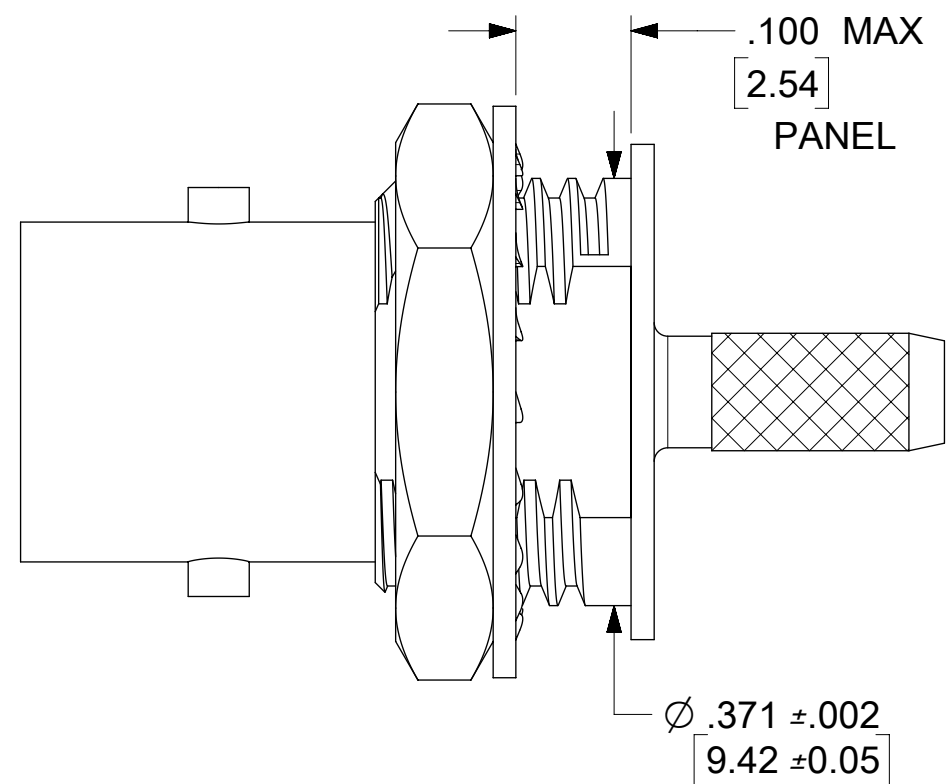
BODY, CRIMP TUBE & PRESS RING : BRASS
 PLATED: NICKEL(100μ-in MIN)

CENTER CONTACT: PHOSPHOR BRONZE
 PLATED: GOLD(30μ-in MIN)
 OVER NICKEL(100μ-in MIN)

INSULATOR: PTFE

JAM NUT: BRASS
 PLATED: NICKEL(70μ-in MIN)

LOCKWASHER: PHOSPHOR BRONZE
 PLATED: NICKEL(70μ-in MIN)

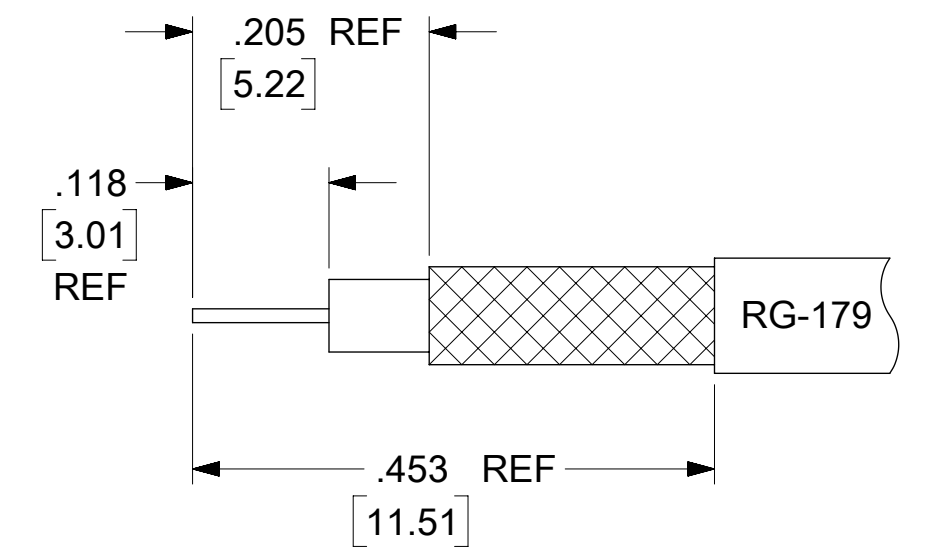
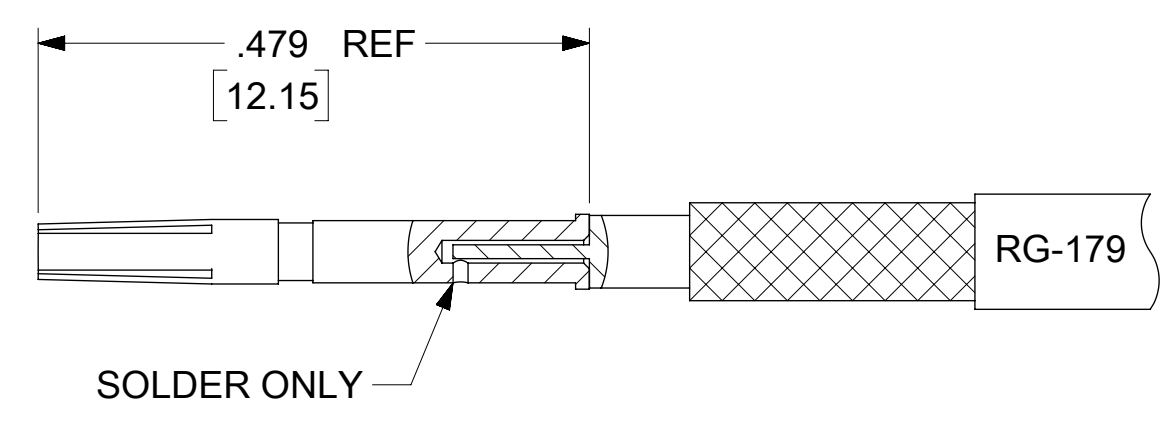
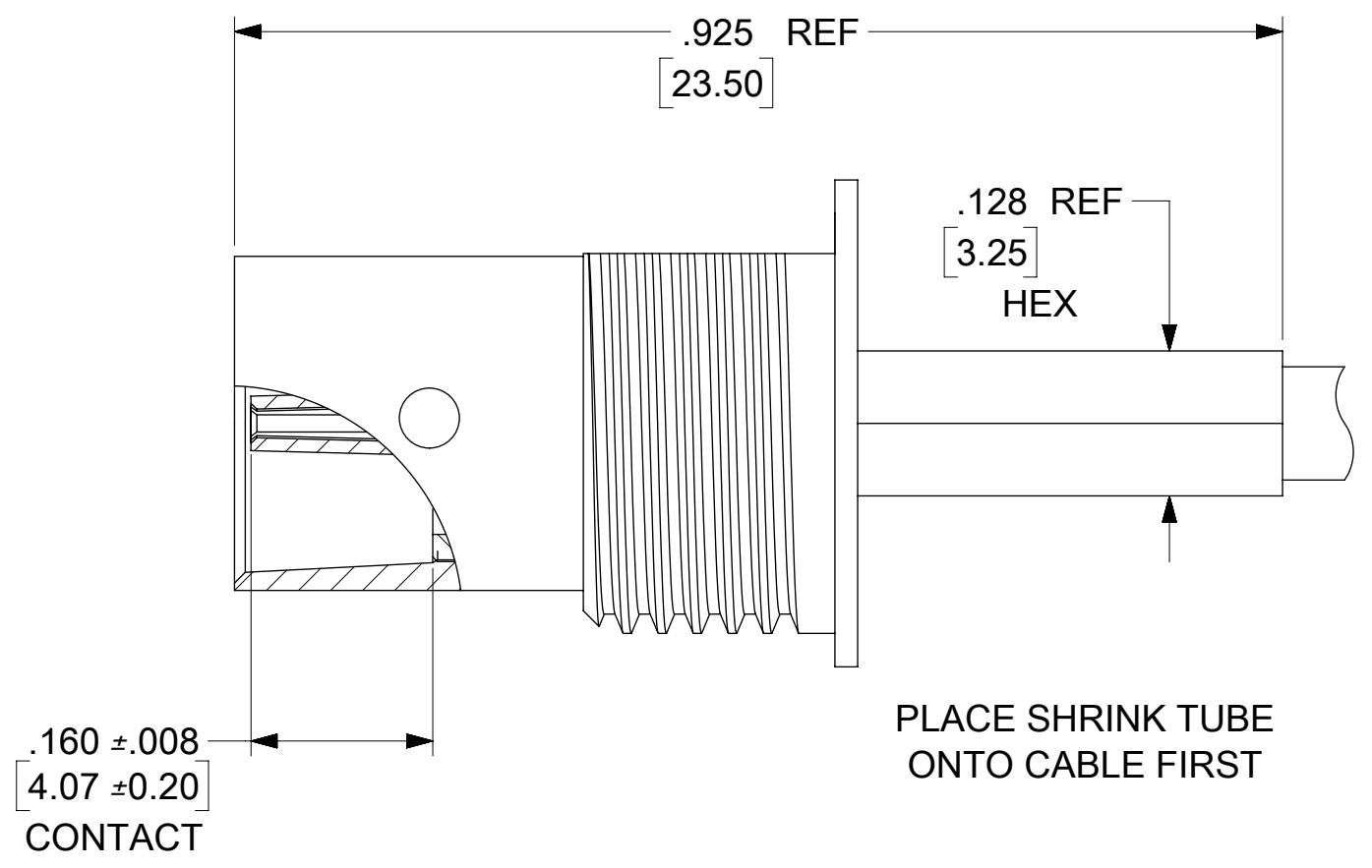


RECOMMENDED
 PANEL CUTOUT

SYMBOLS				THIS DRAWING CONTAINS INFORMATION THAT IS PROPRIETARY TO MOLEX ELECTRONIC TECHNOLOGIES, LLC AND SHOULD NOT BE USED WITHOUT WRITTEN PERMISSION			
▽ = 0	DIMENSION UNITS		SCALE		CURRENT REV DESC: SEE ECM		
▽ = 0	INCH						
▽ = 0	GENERAL TOLERANCES (UNLESS SPECIFIED)						
▽ = 0		MM		INCH			
▽ = 0	4 PLACES ±		±		EC NO: 175335		
▽ = 0	3 PLACES ±		± 0.01		DRWN: APRAKASH01	2018/04/19	
▽ = 0	2 PLACES ±	0.25	±		CHK'D: APRAKASH01	2018/04/24	
▽ = 0	1 PLACE ±		±		APPR: AROBERTSON	2018/04/24	
▽ = 0	0 PLACES ±		±		INITIAL REVISION:		
▽ = 0	ANGULAR TOL		± 2.0°		DRWN: JMASTRIANO	2005/05/24	
▽ = 0	DRAFT WHERE APPLICABLE MUST REMAIN WITHIN DIMENSIONS		THIRD ANGLE PROJECTION		DRAWING	SERIES	
▽ = 0			C-SIZE		73171		
DOCUMENT STATUS				P1		RELEASE DATE	2018/04/24 15:16:06

molex			
MINI BNC JACK, BULKHEAD RG179, 75 OHMS, MINI BNC-JC, EWR-11570			
PRODUCT CUSTOMER DRAWING			
DOCUMENT NUMBER		DOC TYPE	DOC PART
SD-73171-263		PSD	001
		REVISION	B1
MATERIAL NUMBER		CUSTOMER	SHEET NUMBER
SEE TABLE			1 OF 2

73171-2632	INCLUDED	INCLUDED	73171-2631, ONE PER BAG
73171-2631	INCLUDED	INCLUDED	TRAY
73171-2630	NOT INCLUDED	NOT INCLUDED	TRAY
PART NO.	JAM NUT	LOCK WASHER	PACKAGING
HARDWARE COMPONENTS			



RECOMMENDED CABLE
STRIP DIMENSIONS

SYMBOLS	THIS DRAWING CONTAINS INFORMATION THAT IS PROPRIETARY TO MOLEX ELECTRONIC TECHNOLOGIES, LLC AND SHOULD NOT BE USED WITHOUT WRITTEN PERMISSION				
	DIMENSION UNITS	SCALE	CURRENT REV DESC: SEE ECM		
▽ = 0	INCH		molex MINI BNC JACK, BULKHEAD RG179, 75 OHMS, MINI BNC-JC, EWR-11570		
▽ = 0	GENERAL TOLERANCES (UNLESS SPECIFIED)				
▽ = 0		MM			INCH
▽ = 0	4 PLACES ±				
▽ = 0	3 PLACES ±				± 0.01
▽ = 0	2 PLACES ±	0.25			
▽ = 0	1 PLACE ±				
▽ = 0	0 PLACES ±				
▽ = 0	ANGULAR TOL	± 2.0°			
▽ = 0	DRAFT WHERE APPLICABLE MUST REMAIN WITHIN DIMENSIONS	THIRD ANGLE PROJECTION	DRAWING	SERIES	
			C-SIZE	73171	
DOCUMENT NUMBER		DOC TYPE	DOC PART	REVISION	
SD-73171-263		PSD	001	B1	
MATERIAL NUMBER		CUSTOMER	SHEET NUMBER		
SEE TABLE			2 OF 2		